

SUBLEASE > 2,200 RSF



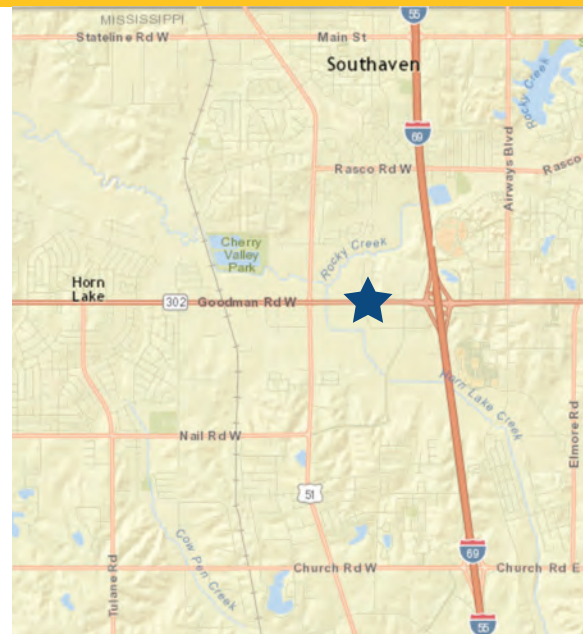
# Interstate Crossing

983 GOODMAN RD, SUITE 115, HORN LAKE, MISSISSIPPI 38637



## Property Features

- > Sublease opportunity thru March 2021
- > 2,200 RSF
- > 50/50 office to warehouse ratio
- > Space includes two private offices, large multi-purpose room, kitchenette, fax/copy room, and warehouse
- > On Goodman Rd with easy access to Interstate 55



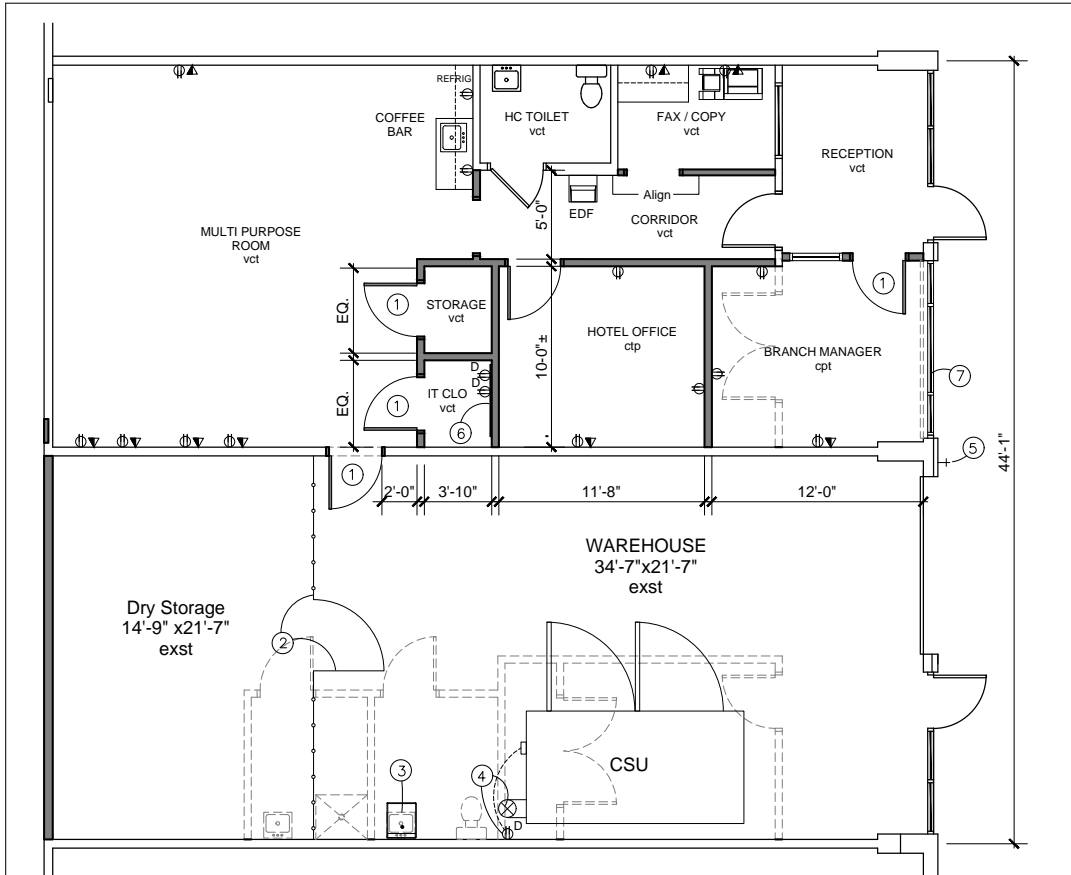
AGENT: BRAD MURCHISON  
901 375 4800 | EXT. 4917  
MEMPHIS, TN  
brad.murchison@colliers.com

AGENT: ALEX STRINGFELLOW  
901 375 4800 | EXT. 4920  
MEMPHIS, TN  
alex.stringfellow@colliers.com

COLLIERS INTERNATIONAL  
6000 Poplar Avenue, Suite 201  
Memphis, TN 38119

[www.Colliers.com/memphis](http://www.Colliers.com/memphis)

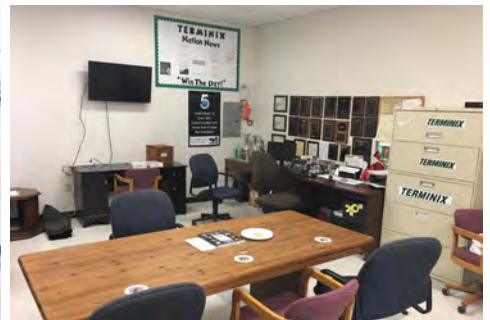
# 983 Goodman Road, Suite 115 > Floor Plan



Reception Area



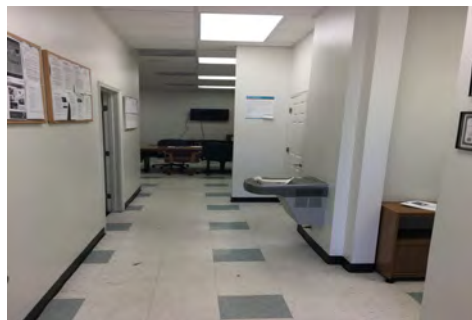
Break Area



Multi Purpose Room



Multi Purpose Room



Office Corridor



Copy Room

Information contained herein was obtained from sources deemed to be reliable. It is submitted subject to errors, omissions, and without warranty.

AGENT: BRAD MURCHISON  
 901 375 4800 | EXT. 4917  
 MEMPHIS, TN  
 brad.murchison@colliers.com

AGENT: ALEX STRINGFELLOW  
 901 375 4800 | EXT. 4920  
 MEMPHIS, TN  
 alex.stringfellow@colliers.com

