

SUBLEASE > 2,200 RSF



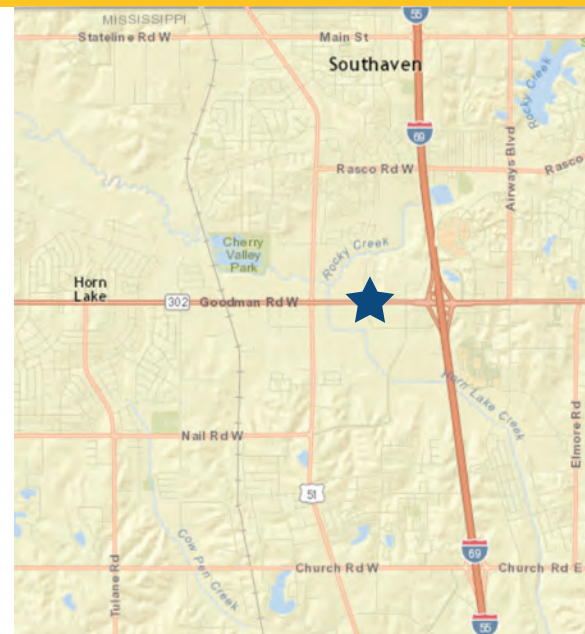
Interstate Crossing

983 GOODMAN RD, SUITE 115, HORN LAKE, MISSISSIPPI 38637



Property Features

- > Sublease opportunity thru March 2021
- > 2,200 RSF
- > 50/50 office to warehouse ratio
- > Space includes two private offices, large multi-purpose room, kitchenette, fax/copy room, and warehouse
- > On Goodman Rd with easy access to Interstate 55



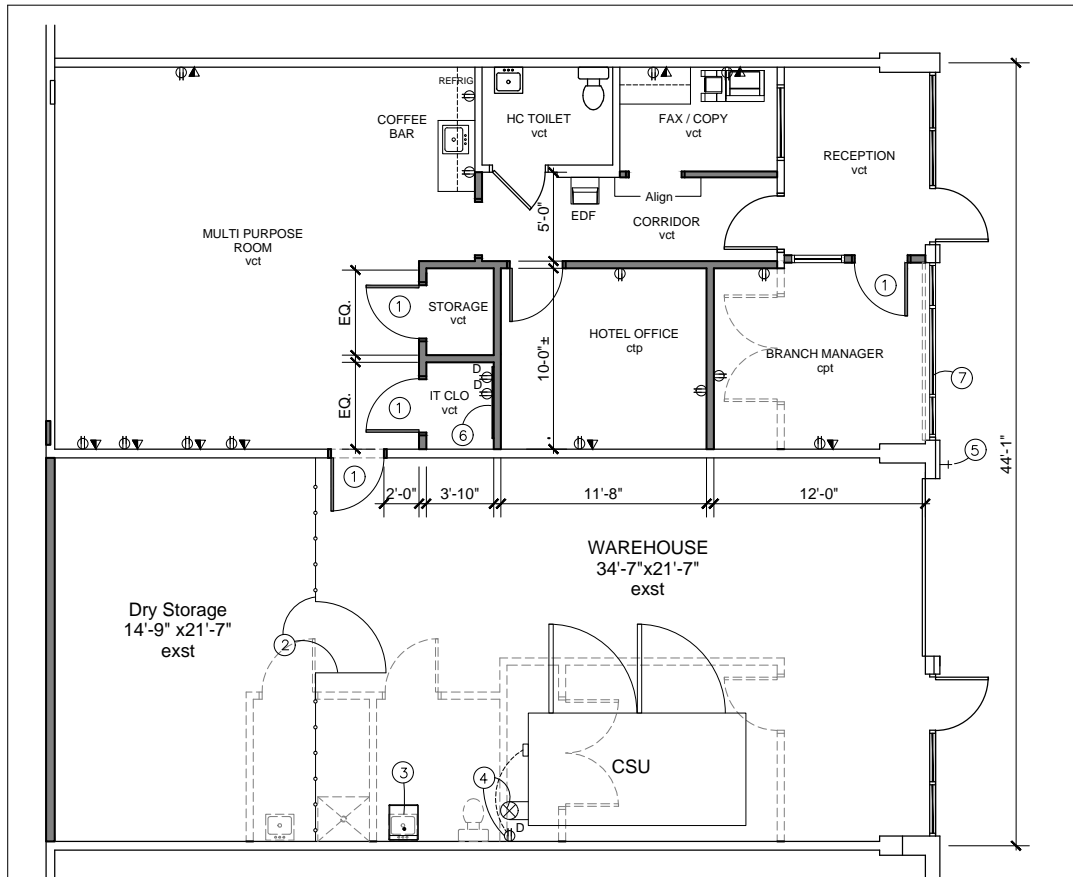
AGENT: BRAD MURCHISON
901 375 4800 | EXT. 4917
MEMPHIS, TN
brad.murchison@colliers.com

AGENT: ALEX STRINGFELLOW
901 375 4800 | EXT. 4920
MEMPHIS, TN
alex.stringfellow@colliers.com

COLLIERS INTERNATIONAL
6363 Poplar Avenue, Suite 220
Memphis, TN 38119

www.Colliers.com/memphis

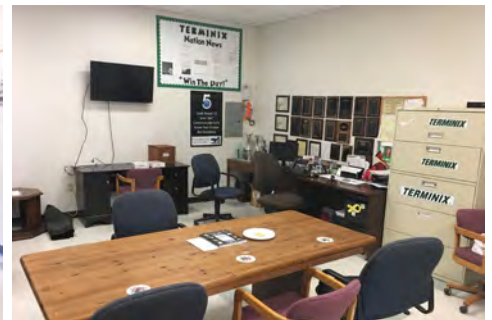
983 Goodman Road, Suite 115 > Floor Plan



Reception Area



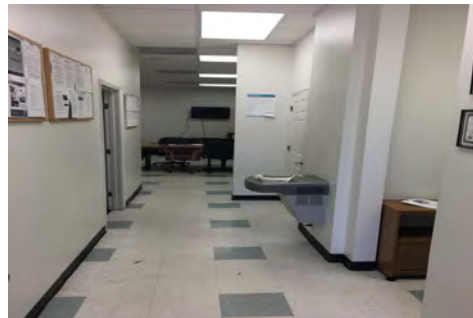
Break Area



Multi Purpose Room



Multi Purpose Room



Office Corridor



Copy Room

AGENT: BRAD MURCHISON
901 375 4800 | EXT. 4917
MEMPHIS, TN
brad.murchison@colliers.com

AGENT: ALEX STRINGFELLOW
901 375 4800 | EXT. 4920
MEMPHIS, TN
alex.stringfellow@colliers.com

