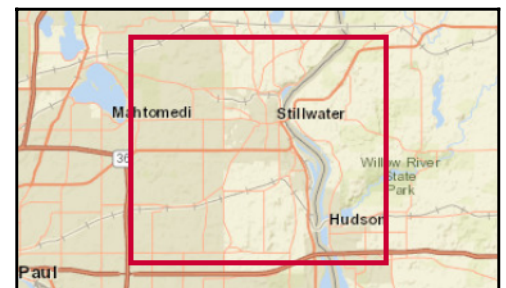
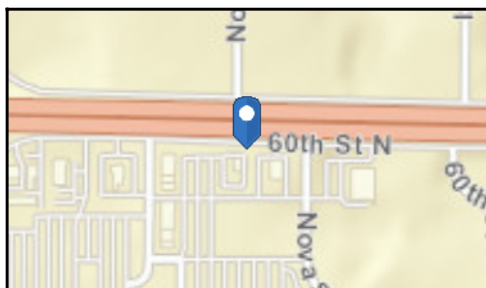
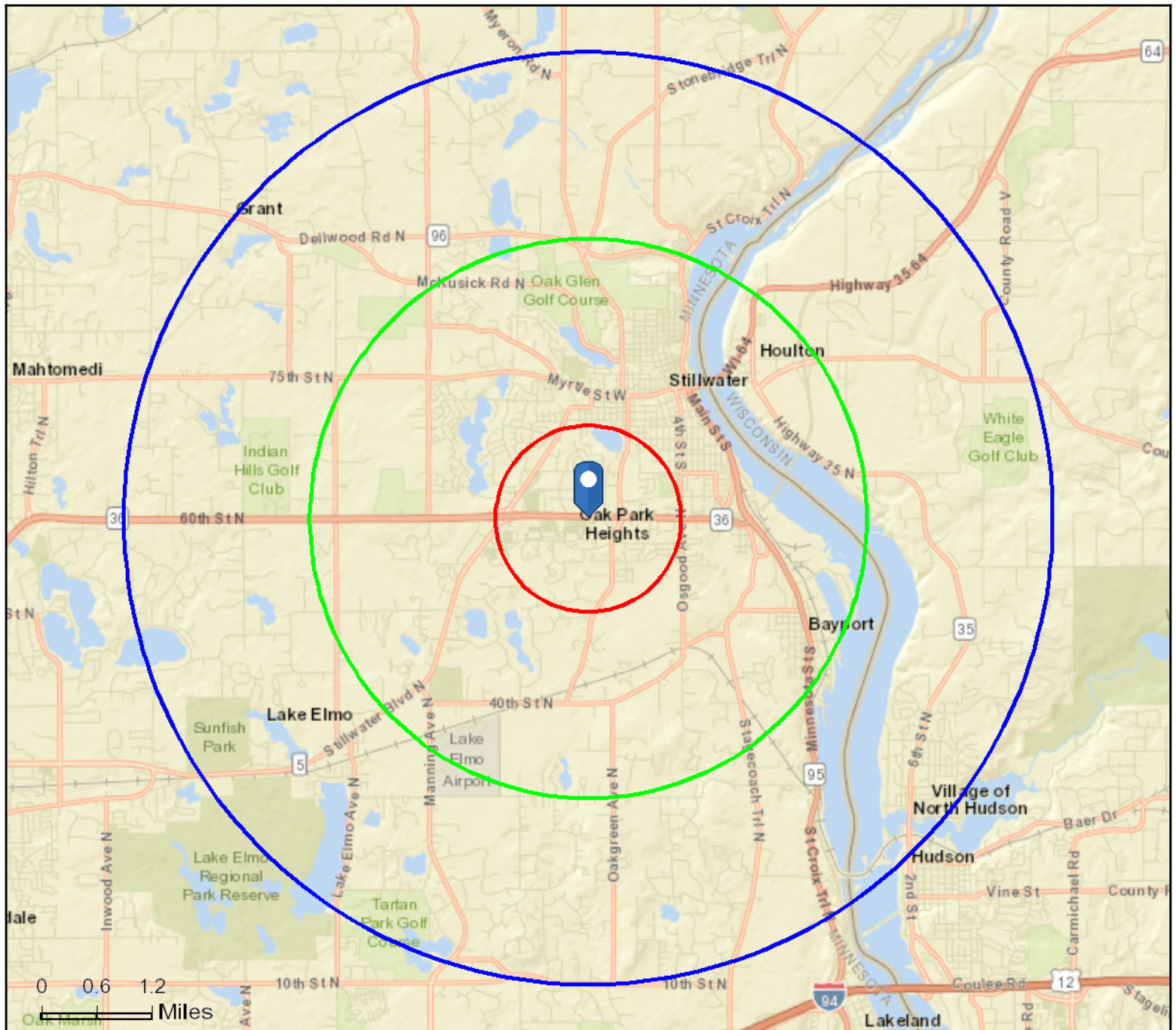


Site Map

13775 60th St N, Stillwater, Minnesota, 55082
Rings: 1, 3, 5 mile radii

Prepared by Esri
Latitude: 45.03568
Longitude: -92.82794



August 29, 2017



Executive Summary

13775 60th St N, Stillwater, Minnesota, 55082
Rings: 1, 3, 5 mile radii

Prepared by Esri
Latitude: 45.03568
Longitude: -92.82794

	1 mile	3 miles	5 miles
Population			
2000 Population	4,684	25,589	38,290
2010 Population	5,098	29,382	43,656
2017 Population	5,458	30,831	46,616
2022 Population	5,692	32,165	49,052
2000-2010 Annual Rate	0.85%	1.39%	1.32%
2010-2017 Annual Rate	0.95%	0.67%	0.91%
2017-2022 Annual Rate	0.84%	0.85%	1.02%
2017 Male Population	46.8%	51.8%	51.1%
2017 Female Population	53.2%	48.2%	48.9%
2017 Median Age	45.4	42.7	43.2

In the identified area, the current year population is 46,616. In 2010, the Census count in the area was 43,656. The rate of change since 2010 was 0.91% annually. The five-year projection for the population in the area is 49,052 representing a change of 1.02% annually from 2017 to 2022. Currently, the population is 51.1% male and 48.9% female.

Median Age

The median age in this area is 45.4, compared to U.S. median age of 38.2.

Race and Ethnicity

2017 White Alone	93.2%	90.5%	91.7%
2017 Black Alone	1.0%	4.3%	3.1%
2017 American Indian/Alaska Native Alone	0.2%	1.0%	0.8%
2017 Asian Alone	2.5%	1.6%	1.8%
2017 Pacific Islander Alone	0.0%	0.0%	0.1%
2017 Other Race	1.0%	0.7%	0.7%
2017 Two or More Races	2.0%	1.9%	1.9%
2017 Hispanic Origin (Any Race)	3.4%	2.9%	2.8%

Persons of Hispanic origin represent 2.8% of the population in the identified area compared to 18.1% of the U.S. population. Persons of Hispanic Origin may be of any race. The Diversity Index, which measures the probability that two people from the same area will be from different race/ethnic groups, is 20.3 in the identified area, compared to 64.0 for the U.S. as a whole.

Households

2000 Households	1,852	9,152	13,620
2010 Households	2,227	10,913	16,092
2017 Total Households	2,413	11,553	17,275
2022 Total Households	2,526	12,114	18,246
2000-2010 Annual Rate	1.86%	1.78%	1.68%
2010-2017 Annual Rate	1.11%	0.79%	0.98%
2017-2022 Annual Rate	0.92%	0.95%	1.10%
2017 Average Household Size	2.24	2.44	2.55

The household count in this area has changed from 16,092 in 2010 to 17,275 in the current year, a change of 0.98% annually. The five-year projection of households is 18,246, a change of 1.10% annually from the current year total. Average household size is currently 2.55, compared to 2.55 in the year 2010. The number of families in the current year is 12,253 in the specified area.

Data Note: Income is expressed in current dollars

Source: U.S. Census Bureau, Census 2010 Summary File 1. Esri forecasts for 2017 and 2022. Esri converted Census 2000 data into 2010 geography.

August 29, 2017



Executive Summary

13775 60th St N, Stillwater, Minnesota, 55082
Rings: 1, 3, 5 mile radii

Prepared by Esri
Latitude: 45.03568
Longitude: -92.82794

	1 mile	3 miles	5 miles
Median Household Income			
2017 Median Household Income	\$65,488	\$76,497	\$85,432
2022 Median Household Income	\$73,788	\$83,764	\$93,440
2017-2022 Annual Rate	2.42%	1.83%	1.81%
Average Household Income			
2017 Average Household Income	\$92,874	\$104,319	\$113,327
2022 Average Household Income	\$104,533	\$116,659	\$126,039
2017-2022 Annual Rate	2.39%	2.26%	2.15%
Per Capita Income			
2017 Per Capita Income	\$38,696	\$39,991	\$42,463
2022 Per Capita Income	\$43,626	\$44,866	\$47,321
2017-2022 Annual Rate	2.43%	2.33%	2.19%

Households by Income

Current median household income is \$85,432 in the area, compared to \$56,124 for all U.S. households. Median household income is projected to be \$93,440 in five years, compared to \$62,316 for all U.S. households

Current average household income is \$113,327 in this area, compared to \$80,675 for all U.S. households. Average household income is projected to be \$126,039 in five years, compared to \$91,585 for all U.S. households

Current per capita income is \$42,463 in the area, compared to the U.S. per capita income of \$30,820. The per capita income is projected to be \$47,321 in five years, compared to \$34,828 for all U.S. households

Housing			
2000 Total Housing Units	1,900	9,379	13,952
2000 Owner Occupied Housing Units	1,251	7,196	11,201
2000 Renter Occupied Housing Units	601	1,956	2,419
2000 Vacant Housing Units	48	227	332
2010 Total Housing Units	2,358	11,712	17,128
2010 Owner Occupied Housing Units	1,438	8,119	12,702
2010 Renter Occupied Housing Units	789	2,794	3,390
2010 Vacant Housing Units	131	799	1,036
2017 Total Housing Units	2,553	12,401	18,377
2017 Owner Occupied Housing Units	1,496	8,354	13,373
2017 Renter Occupied Housing Units	917	3,199	3,902
2017 Vacant Housing Units	140	848	1,102
2022 Total Housing Units	2,674	13,009	19,415
2022 Owner Occupied Housing Units	1,570	8,748	14,137
2022 Renter Occupied Housing Units	955	3,366	4,109
2022 Vacant Housing Units	148	895	1,169

Currently, 72.8% of the 18,377 housing units in the area are owner occupied; 21.2%, renter occupied; and 6.0% are vacant. Currently, in the U.S., 55.6% of the housing units in the area are owner occupied; 33.1% are renter occupied; and 11.3% are vacant. In 2010, there were 17,128 housing units in the area - 74.2% owner occupied, 19.8% renter occupied, and 6.0% vacant. The annual rate of change in housing units since 2010 is 3.18%. Median home value in the area is \$316,269, compared to a median home value of \$207,344 for the U.S. In five years, median value is projected to change by 2.58% annually to \$359,291.

Data Note: Income is expressed in current dollars

Source: U.S. Census Bureau, Census 2010 Summary File 1. Esri forecasts for 2017 and 2022. Esri converted Census 2000 data into 2010 geography.

August 29, 2017



2010 Census Profile

13775 60th St N, Stillwater, Minnesota, 55082
Ring: 1 mile radius

Prepared by Esri
Latitude: 45.03568
Longitude: -92.82794

	2000	2010	2000-2010 Annual Rate
Population	4,684	5,098	0.85%
Households	1,852	2,227	1.86%
Housing Units	1,900	2,358	2.18%
Population by Race			
Total		5,098	100.0%
Population Reporting One Race		5,012	98.3%
White		4,818	94.5%
Black		38	0.7%
American Indian		12	0.2%
Asian		101	2.0%
Pacific Islander		0	0.0%
Some Other Race		43	0.8%
Population Reporting Two or More Races		86	1.7%
Total Hispanic Population		134	2.6%
Population by Sex			
Male		2,384	46.8%
Female		2,714	53.2%
Population by Age			
Total		5,096	100.0%
Age 0 - 4		280	5.5%
Age 5 - 9		351	6.9%
Age 10 - 14		372	7.3%
Age 15 - 19		349	6.8%
Age 20 - 24		253	5.0%
Age 25 - 29		225	4.4%
Age 30 - 34		222	4.4%
Age 35 - 39		272	5.3%
Age 40 - 44		363	7.1%
Age 45 - 49		441	8.7%
Age 50 - 54		375	7.4%
Age 55 - 59		358	7.0%
Age 60 - 64		308	6.0%
Age 65 - 69		209	4.1%
Age 70 - 74		181	3.6%
Age 75 - 79		173	3.4%
Age 80 - 84		165	3.2%
Age 85+		202	4.0%
Age 18+		3,848	75.5%
Age 65+		930	18.2%

Data Note: Hispanic population can be of any race. Census 2010 medians are computed from reported data distributions.

Source: U.S. Census Bureau, Census 2010 Summary File 1. Esri converted Census 2000 data into 2010 geography.



2010 Census Profile

13775 60th St N, Stillwater, Minnesota, 55082
Ring: 1 mile radius

Prepared by Esri
Latitude: 45.03568
Longitude: -92.82794

Households by Type

Total	2,227	100.0%
Households with 1 Person	672	30.2%
Households with 2+ People	1,555	69.8%
Family Households	1,472	66.1%
Husband-wife Families	1,140	51.2%
With Own Children	439	19.7%
Other Family (No Spouse Present)	333	15.0%
With Own Children	227	10.2%
Nonfamily Households	83	3.7%
All Households with Children	700	31.4%
Multigenerational Households	38	1.7%
Unmarried Partner Households	110	4.9%
Male-female	99	4.4%
Same-sex	11	0.5%
Average Household Size	2.27	

Family Households by Size

Total	1,473	100.0%
2 People	711	48.3%
3 People	310	21.0%
4 People	280	19.0%
5 People	118	8.0%
6 People	39	2.6%
7+ People	15	1.0%
Average Family Size	2.82	

Nonfamily Households by Size

Total	755	100.0%
1 Person	672	89.0%
2 People	71	9.4%
3 People	9	1.2%
4 People	3	0.4%
5 People	0	0.0%
6 People	0	0.0%
7+ People	0	0.0%
Average Nonfamily Size	1.08	

Population by Relationship and Household Type

Total	5,098	100.0%
In Households	5,056	99.2%
In Family Households	4,237	83.1%
Householder	1,417	27.8%
Spouse	1,090	21.4%
Child	1,586	31.1%
Other relative	61	1.2%
Nonrelative	83	1.6%
In Nonfamily Households	819	16.1%
In Group Quarters	42	0.8%
Institutionalized Population	40	0.8%
Noninstitutionalized Population	2	0.0%

Data Note: Households with children include any households with people under age 18, related or not. Multigenerational households are families with 3 or more parent-child relationships. Unmarried partner households are usually classified as nonfamily households unless there is another member of the household related to the householder. Multigenerational and unmarried partner households are reported only to the tract level. Esri estimated block group data, which is used to estimate polygons or non-standard geography. Average family size excludes nonrelatives.

Source: U.S. Census Bureau, Census 2010 Summary File 1.



2010 Census Profile

13775 60th St N, Stillwater, Minnesota, 55082
Ring: 1 mile radius

Prepared by Esri
Latitude: 45.03568
Longitude: -92.82794

Family Households by Age of Householder

Total	1,471	100.0%
Householder Age 15 - 44	488	33.2%
Householder Age 45 - 54	389	26.4%
Householder Age 55 - 64	277	18.8%
Householder Age 65 - 74	160	10.9%
Householder Age 75+	157	10.7%

Nonfamily Households by Age of Householder

Total	756	100.0%
Householder Age 15 - 44	157	20.8%
Householder Age 45 - 54	122	16.1%
Householder Age 55 - 64	123	16.3%
Householder Age 65 - 74	108	14.3%
Householder Age 75+	246	32.5%

Households by Race of Householder

Total	2,227	100.0%
Householder is White Alone	2,150	96.5%
Householder is Black Alone	13	0.6%
Householder is American Indian Alone	4	0.2%
Householder is Asian Alone	33	1.5%
Householder is Pacific Islander Alone	0	0.0%
Householder is Some Other Race Alone	9	0.4%
Householder is Two or More Races	18	0.8%
Households with Hispanic Householder	35	1.6%

Husband-wife Families by Race of Householder

Total	1,140	100.0%
Householder is White Alone	1,100	96.5%
Householder is Black Alone	6	0.5%
Householder is American Indian Alone	3	0.3%
Householder is Asian Alone	20	1.8%
Householder is Pacific Islander Alone	0	0.0%
Householder is Some Other Race Alone	6	0.5%
Householder is Two or More Races	5	0.4%
Husband-wife Families with Hispanic Householder	14	1.2%

Other Families (No Spouse) by Race of Householder

Total	333	100.0%
Householder is White Alone	311	93.4%
Householder is Black Alone	5	1.5%
Householder is American Indian Alone	1	0.3%
Householder is Asian Alone	6	1.8%
Householder is Pacific Islander Alone	0	0.0%
Householder is Some Other Race Alone	2	0.6%
Householder is Two or More Races	8	2.4%
Other Families with Hispanic Householder	13	3.9%

Nonfamily Households by Race of Householder

Total	755	100.0%
Householder is White Alone	739	97.9%
Householder is Black Alone	2	0.3%
Householder is American Indian Alone	0	0.0%
Householder is Asian Alone	7	0.9%
Householder is Pacific Islander Alone	0	0.0%
Householder is Some Other Race Alone	2	0.3%
Householder is Two or More Races	5	0.7%
Nonfamily Households with Hispanic Householder	8	1.1%

Source: U.S. Census Bureau, Census 2010 Summary File 1.



2010 Census Profile

13775 60th St N, Stillwater, Minnesota, 55082
Ring: 1 mile radius

Prepared by Esri
Latitude: 45.03568
Longitude: -92.82794

Total Housing Units by Occupancy

Total	2,341	100.0%
Occupied Housing Units	2,227	95.1%
Vacant Housing Units		
For Rent	56	2.4%
Rented, not Occupied	3	0.1%
For Sale Only	26	1.1%
Sold, not Occupied	2	0.1%
For Seasonal/Recreational/Occasional Use	8	0.3%
For Migrant Workers	0	0.0%
Other Vacant	19	0.8%
Total Vacancy Rate	5.6%	

Households by Tenure and Mortgage Status

Total	2,227	100.0%
Owner Occupied	1,438	64.6%
Owned with a Mortgage/Loan	1,141	51.2%
Owned Free and Clear	297	13.3%
Average Household Size	2.53	
Renter Occupied	789	35.4%
Average Household Size	1.79	

Owner-occupied Housing Units by Race of Householder

Total	1,439	100.0%
Householder is White Alone	1,411	98.1%
Householder is Black Alone	1	0.1%
Householder is American Indian Alone	3	0.2%
Householder is Asian Alone	16	1.1%
Householder is Pacific Islander Alone	0	0.0%
Householder is Some Other Race Alone	2	0.1%
Householder is Two or More Races	6	0.4%
Owner-occupied Housing Units with Hispanic Householder	8	0.6%

Renter-occupied Housing Units by Race of Householder

Total	789	100.0%
Householder is White Alone	739	93.7%
Householder is Black Alone	12	1.5%
Householder is American Indian Alone	2	0.3%
Householder is Asian Alone	16	2.0%
Householder is Pacific Islander Alone	0	0.0%
Householder is Some Other Race Alone	8	1.0%
Householder is Two or More Races	12	1.5%
Renter-occupied Housing Units with Hispanic Householder	27	3.4%

Average Household Size by Race/Hispanic Origin of Householder

Householder is White Alone	2.25
Householder is Black Alone	2.92
Householder is American Indian Alone	2.75
Householder is Asian Alone	2.85
Householder is Pacific Islander Alone	0.00
Householder is Some Other Race Alone	4.44
Householder is Two or More Races	2.56
Householder is Hispanic	3.09

Source: U.S. Census Bureau, Census 2010 Summary File 1.



2010 Census Profile

13775 60th St N, Stillwater, Minnesota, 55082
Ring: 3 mile radius

Prepared by Esri
Latitude: 45.03568
Longitude: -92.82794

	2000	2010	2000-2010 Annual Rate
Population	25,589	29,382	1.39%
Households	9,152	10,913	1.78%
Housing Units	9,379	11,712	2.25%
Population by Race			
Total		29,384	100.0%
Population Reporting One Race		28,931	98.5%
White		27,017	91.9%
Black		1,052	3.6%
American Indian		310	1.1%
Asian		390	1.3%
Pacific Islander		6	0.0%
Some Other Race		156	0.5%
Population Reporting Two or More Races		453	1.5%
Total Hispanic Population		681	2.3%
Population by Sex			
Male		15,289	52.0%
Female		14,093	48.0%
Population by Age			
Total		29,382	100.0%
Age 0 - 4		1,485	5.1%
Age 5 - 9		1,999	6.8%
Age 10 - 14		2,062	7.0%
Age 15 - 19		1,832	6.2%
Age 20 - 24		1,595	5.4%
Age 25 - 29		1,723	5.9%
Age 30 - 34		1,559	5.3%
Age 35 - 39		1,901	6.5%
Age 40 - 44		2,371	8.1%
Age 45 - 49		2,495	8.5%
Age 50 - 54		2,375	8.1%
Age 55 - 59		2,098	7.1%
Age 60 - 64		1,698	5.8%
Age 65 - 69		1,188	4.0%
Age 70 - 74		843	2.9%
Age 75 - 79		670	2.3%
Age 80 - 84		675	2.3%
Age 85+		813	2.8%
Age 18+		22,592	76.9%
Age 65+		4,189	14.3%

Data Note: Hispanic population can be of any race. Census 2010 medians are computed from reported data distributions.

Source: U.S. Census Bureau, Census 2010 Summary File 1. Esri converted Census 2000 data into 2010 geography.



2010 Census Profile

13775 60th St N, Stillwater, Minnesota, 55082
Ring: 3 mile radius

Prepared by Esri
Latitude: 45.03568
Longitude: -92.82794

Households by Type

Total	10,914	100.0%
Households with 1 Person	3,021	27.7%
Households with 2+ People	7,893	72.3%
Family Households	7,349	67.3%
Husband-wife Families	5,897	54.0%
With Own Children	2,467	22.6%
Other Family (No Spouse Present)	1,452	13.3%
With Own Children	915	8.4%
Nonfamily Households	544	5.0%
All Households with Children	3,543	32.5%
Multigenerational Households	162	1.5%
Unmarried Partner Households	590	5.4%
Male-female	532	4.9%
Same-sex	58	0.5%
Average Household Size	2.45	

Family Households by Size

Total	7,350	100.0%
2 People	3,349	45.6%
3 People	1,599	21.8%
4 People	1,475	20.1%
5 People	665	9.0%
6 People	188	2.6%
7+ People	74	1.0%
Average Family Size	3.01	

Nonfamily Households by Size

Total	3,565	100.0%
1 Person	3,021	84.7%
2 People	464	13.0%
3 People	56	1.6%
4 People	20	0.6%
5 People	4	0.1%
6 People	0	0.0%
7+ People	0	0.0%
Average Nonfamily Size	1.18	

Population by Relationship and Household Type

Total	29,382	100.0%
In Households	26,769	91.1%
In Family Households	22,546	76.7%
Householder	7,387	25.1%
Spouse	5,932	20.2%
Child	8,468	28.8%
Other relative	340	1.2%
Nonrelative	419	1.4%
In Nonfamily Households	4,223	14.4%
In Group Quarters	2,613	8.9%
Institutionalized Population	2,542	8.7%
Noninstitutionalized Population	70	0.2%

Data Note: Households with children include any households with people under age 18, related or not. Multigenerational households are families with 3 or more parent-child relationships. Unmarried partner households are usually classified as nonfamily households unless there is another member of the household related to the householder. Multigenerational and unmarried partner households are reported only to the tract level. Esri estimated block group data, which is used to estimate polygons or non-standard geography. Average family size excludes nonrelatives.

Source: U.S. Census Bureau, Census 2010 Summary File 1.



2010 Census Profile

13775 60th St N, Stillwater, Minnesota, 55082
Ring: 3 mile radius

Prepared by Esri
Latitude: 45.03568
Longitude: -92.82794

Family Households by Age of Householder

Total	7,347	100.0%
Householder Age 15 - 44	2,484	33.8%
Householder Age 45 - 54	2,021	27.5%
Householder Age 55 - 64	1,461	19.9%
Householder Age 65 - 74	823	11.2%
Householder Age 75+	558	7.6%

Nonfamily Households by Age of Householder

Total	3,565	100.0%
Householder Age 15 - 44	882	24.7%
Householder Age 45 - 54	638	17.9%
Householder Age 55 - 64	697	19.6%
Householder Age 65 - 74	463	13.0%
Householder Age 75+	885	24.8%

Households by Race of Householder

Total	10,913	100.0%
Householder is White Alone	10,625	97.4%
Householder is Black Alone	49	0.4%
Householder is American Indian Alone	28	0.3%
Householder is Asian Alone	91	0.8%
Householder is Pacific Islander Alone	2	0.0%
Householder is Some Other Race Alone	35	0.3%
Householder is Two or More Races	83	0.8%
Households with Hispanic Householder	117	1.1%

Husband-wife Families by Race of Householder

Total	5,896	100.0%
Householder is White Alone	5,756	97.6%
Householder is Black Alone	21	0.4%
Householder is American Indian Alone	14	0.2%
Householder is Asian Alone	53	0.9%
Householder is Pacific Islander Alone	2	0.0%
Householder is Some Other Race Alone	16	0.3%
Householder is Two or More Races	34	0.6%
Husband-wife Families with Hispanic Householder	51	0.9%

Other Families (No Spouse) by Race of Householder

Total	1,452	100.0%
Householder is White Alone	1,388	95.6%
Householder is Black Alone	13	0.9%
Householder is American Indian Alone	8	0.6%
Householder is Asian Alone	17	1.2%
Householder is Pacific Islander Alone	0	0.0%
Householder is Some Other Race Alone	7	0.5%
Householder is Two or More Races	19	1.3%
Other Families with Hispanic Householder	33	2.3%

Nonfamily Households by Race of Householder

Total	3,563	100.0%
Householder is White Alone	3,481	97.7%
Householder is Black Alone	15	0.4%
Householder is American Indian Alone	5	0.1%
Householder is Asian Alone	20	0.6%
Householder is Pacific Islander Alone	0	0.0%
Householder is Some Other Race Alone	12	0.3%
Householder is Two or More Races	30	0.8%
Nonfamily Households with Hispanic Householder	32	0.9%

Source: U.S. Census Bureau, Census 2010 Summary File 1.



2010 Census Profile

13775 60th St N, Stillwater, Minnesota, 55082
Ring: 3 mile radius

Prepared by Esri
Latitude: 45.03568
Longitude: -92.82794

Total Housing Units by Occupancy

Total	11,708	100.0%
Occupied Housing Units	10,913	93.2%
Vacant Housing Units		
For Rent	243	2.1%
Rented, not Occupied	11	0.1%
For Sale Only	198	1.7%
Sold, not Occupied	28	0.2%
For Seasonal/Recreational/Occasional Use	150	1.3%
For Migrant Workers	0	0.0%
Other Vacant	165	1.4%
Total Vacancy Rate	6.8%	

Households by Tenure and Mortgage Status

Total	10,913	100.0%
Owner Occupied	8,119	74.4%
Owned with a Mortgage/Loan	6,386	58.5%
Owned Free and Clear	1,732	15.9%
Average Household Size	2.65	
Renter Occupied	2,794	25.6%
Average Household Size	1.89	

Owner-occupied Housing Units by Race of Householder

Total	8,119	100.0%
Householder is White Alone	7,973	98.2%
Householder is Black Alone	13	0.2%
Householder is American Indian Alone	16	0.2%
Householder is Asian Alone	54	0.7%
Householder is Pacific Islander Alone	2	0.0%
Householder is Some Other Race Alone	16	0.2%
Householder is Two or More Races	45	0.6%
Owner-occupied Housing Units with Hispanic Householder	53	0.7%

Renter-occupied Housing Units by Race of Householder

Total	2,795	100.0%
Householder is White Alone	2,653	94.9%
Householder is Black Alone	36	1.3%
Householder is American Indian Alone	12	0.4%
Householder is Asian Alone	37	1.3%
Householder is Pacific Islander Alone	0	0.0%
Householder is Some Other Race Alone	18	0.6%
Householder is Two or More Races	39	1.4%
Renter-occupied Housing Units with Hispanic Householder	64	2.3%

Average Household Size by Race/Hispanic Origin of Householder

Householder is White Alone	2.44
Householder is Black Alone	2.94
Householder is American Indian Alone	2.64
Householder is Asian Alone	3.14
Householder is Pacific Islander Alone	3.00
Householder is Some Other Race Alone	3.26
Householder is Two or More Races	2.73
Householder is Hispanic	3.10

Source: U.S. Census Bureau, Census 2010 Summary File 1.



2010 Census Profile

13775 60th St N, Stillwater, Minnesota, 55082
Ring: 5 mile radius

Prepared by Esri
Latitude: 45.03568
Longitude: -92.82794

	2000	2010	2000-2010 Annual Rate
Population	38,290	43,656	1.32%
Households	13,620	16,092	1.68%
Housing Units	13,952	17,128	2.07%
Population by Race			
Total		43,658	100.0%
Population Reporting One Race		43,016	98.5%
White		40,604	93.0%
Black		1,147	2.6%
American Indian		369	0.8%
Asian		640	1.5%
Pacific Islander		14	0.0%
Some Other Race		242	0.6%
Population Reporting Two or More Races		642	1.5%
Total Hispanic Population		963	2.2%
Population by Sex			
Male		22,431	51.4%
Female		21,225	48.6%
Population by Age			
Total		43,656	100.0%
Age 0 - 4		2,210	5.1%
Age 5 - 9		3,067	7.0%
Age 10 - 14		3,317	7.6%
Age 15 - 19		2,855	6.5%
Age 20 - 24		2,184	5.0%
Age 25 - 29		2,290	5.2%
Age 30 - 34		2,175	5.0%
Age 35 - 39		2,715	6.2%
Age 40 - 44		3,494	8.0%
Age 45 - 49		3,897	8.9%
Age 50 - 54		3,853	8.8%
Age 55 - 59		3,221	7.4%
Age 60 - 64		2,641	6.0%
Age 65 - 69		1,835	4.2%
Age 70 - 74		1,248	2.9%
Age 75 - 79		891	2.0%
Age 80 - 84		851	1.9%
Age 85+		913	2.1%
Age 18+		33,084	75.8%
Age 65+		5,738	13.1%

Data Note: Hispanic population can be of any race. Census 2010 medians are computed from reported data distributions.

Source: U.S. Census Bureau, Census 2010 Summary File 1. Esri converted Census 2000 data into 2010 geography.



2010 Census Profile

13775 60th St N, Stillwater, Minnesota, 55082
Ring: 5 mile radius

Prepared by Esri
Latitude: 45.03568
Longitude: -92.82794

Households by Type

Total	16,093	100.0%
Households with 1 Person	3,834	23.8%
Households with 2+ People	12,259	76.2%
Family Households	11,460	71.2%
Husband-wife Families	9,493	59.0%
With Own Children	3,982	24.7%
Other Family (No Spouse Present)	1,967	12.2%
With Own Children	1,229	7.6%
Nonfamily Households	799	5.0%
All Households with Children	5,463	33.9%
Multigenerational Households	263	1.6%
Unmarried Partner Households	866	5.4%
Male-female	779	4.8%
Same-sex	87	0.5%
Average Household Size	2.55	

Family Households by Size

Total	11,461	100.0%
2 People	5,125	44.7%
3 People	2,432	21.2%
4 People	2,382	20.8%
5 People	1,064	9.3%
6 People	320	2.8%
7+ People	138	1.2%
Average Family Size	3.03	

Nonfamily Households by Size

Total	4,634	100.0%
1 Person	3,834	82.7%
2 People	684	14.8%
3 People	81	1.7%
4 People	29	0.6%
5 People	5	0.1%
6 People	0	0.0%
7+ People	1	0.0%
Average Nonfamily Size	1.21	

Population by Relationship and Household Type

Total	43,656	100.0%
In Households	41,003	93.9%
In Family Households	35,409	81.1%
Householder	11,469	26.3%
Spouse	9,500	21.8%
Child	13,220	30.3%
Other relative	581	1.3%
Nonrelative	639	1.5%
In Nonfamily Households	5,594	12.8%
In Group Quarters	2,653	6.1%
Institutionalized Population	2,543	5.8%
Noninstitutionalized Population	110	0.3%

Data Note: **Households with children** include any households with people under age 18, related or not. **Multigenerational households** are families with 3 or more parent-child relationships. **Unmarried partner households** are usually classified as nonfamily households unless there is another member of the household related to the householder. Multigenerational and unmarried partner households are reported only to the tract level. Esri estimated block group data, which is used to estimate polygons or non-standard geography. **Average family size** excludes nonrelatives.

Source: U.S. Census Bureau, Census 2010 Summary File 1.



2010 Census Profile

13775 60th St N, Stillwater, Minnesota, 55082
Ring: 5 mile radius

Prepared by Esri
Latitude: 45.03568
Longitude: -92.82794

Family Households by Age of Householder

Total	11,460	100.0%
Householder Age 15 - 44	3,673	32.1%
Householder Age 45 - 54	3,320	29.0%
Householder Age 55 - 64	2,401	21.0%
Householder Age 65 - 74	1,313	11.5%
Householder Age 75+	753	6.6%

Nonfamily Households by Age of Householder

Total	4,632	100.0%
Householder Age 15 - 44	1,184	25.6%
Householder Age 45 - 54	901	19.5%
Householder Age 55 - 64	928	20.0%
Householder Age 65 - 74	602	13.0%
Householder Age 75+	1,017	22.0%

Households by Race of Householder

Total	16,092	100.0%
Householder is White Alone	15,673	97.4%
Householder is Black Alone	72	0.4%
Householder is American Indian Alone	46	0.3%
Householder is Asian Alone	139	0.9%
Householder is Pacific Islander Alone	5	0.0%
Householder is Some Other Race Alone	46	0.3%
Householder is Two or More Races	111	0.7%
Households with Hispanic Householder	173	1.1%

Husband-wife Families by Race of Householder

Total	9,493	100.0%
Householder is White Alone	9,263	97.6%
Householder is Black Alone	39	0.4%
Householder is American Indian Alone	25	0.3%
Householder is Asian Alone	90	0.9%
Householder is Pacific Islander Alone	2	0.0%
Householder is Some Other Race Alone	23	0.2%
Householder is Two or More Races	51	0.5%
Husband-wife Families with Hispanic Householder	88	0.9%

Other Families (No Spouse) by Race of Householder

Total	1,968	100.0%
Householder is White Alone	1,881	95.6%
Householder is Black Alone	15	0.8%
Householder is American Indian Alone	13	0.7%
Householder is Asian Alone	25	1.3%
Householder is Pacific Islander Alone	0	0.0%
Householder is Some Other Race Alone	10	0.5%
Householder is Two or More Races	24	1.2%
Other Families with Hispanic Householder	44	2.2%

Nonfamily Households by Race of Householder

Total	4,633	100.0%
Householder is White Alone	4,529	97.8%
Householder is Black Alone	18	0.4%
Householder is American Indian Alone	8	0.2%
Householder is Asian Alone	25	0.5%
Householder is Pacific Islander Alone	3	0.1%
Householder is Some Other Race Alone	13	0.3%
Householder is Two or More Races	37	0.8%
Nonfamily Households with Hispanic Householder	40	0.9%

Source: U.S. Census Bureau, Census 2010 Summary File 1.



2010 Census Profile

13775 60th St N, Stillwater, Minnesota, 55082
Ring: 5 mile radius

Prepared by Esri
Latitude: 45.03568
Longitude: -92.82794

Total Housing Units by Occupancy

Total	17,126	100.0%
Occupied Housing Units	16,092	94.0%
Vacant Housing Units		
For Rent	293	1.7%
Rented, not Occupied	11	0.1%
For Sale Only	263	1.5%
Sold, not Occupied	40	0.2%
For Seasonal/Recreational/Occasional Use	218	1.3%
For Migrant Workers	0	0.0%
Other Vacant	209	1.2%
Total Vacancy Rate	6.0%	

Households by Tenure and Mortgage Status

Total	16,092	100.0%
Owner Occupied	12,702	78.9%
Owned with a Mortgage/Loan	9,919	61.6%
Owned Free and Clear	2,783	17.3%
Average Household Size	2.71	
Renter Occupied	3,390	21.1%
Average Household Size	1.95	

Owner-occupied Housing Units by Race of Householder

Total	12,701	100.0%
Householder is White Alone	12,453	98.0%
Householder is Black Alone	29	0.2%
Householder is American Indian Alone	29	0.2%
Householder is Asian Alone	98	0.8%
Householder is Pacific Islander Alone	3	0.0%
Householder is Some Other Race Alone	22	0.2%
Householder is Two or More Races	67	0.5%
Owner-occupied Housing Units with Hispanic Householder	94	0.7%

Renter-occupied Housing Units by Race of Householder

Total	3,390	100.0%
Householder is White Alone	3,220	95.0%
Householder is Black Alone	43	1.3%
Householder is American Indian Alone	17	0.5%
Householder is Asian Alone	41	1.2%
Householder is Pacific Islander Alone	2	0.1%
Householder is Some Other Race Alone	24	0.7%
Householder is Two or More Races	43	1.3%
Renter-occupied Housing Units with Hispanic Householder	78	2.3%

Average Household Size by Race/Hispanic Origin of Householder

Householder is White Alone	2.53
Householder is Black Alone	3.25
Householder is American Indian Alone	2.93
Householder is Asian Alone	3.64
Householder is Pacific Islander Alone	2.40
Householder is Some Other Race Alone	3.48
Householder is Two or More Races	2.91
Householder is Hispanic	3.25

Source: U.S. Census Bureau, Census 2010 Summary File 1.



Demographic and Income Profile

13775 60th St N, Stillwater, Minnesota, 55082
Ring: 1 mile radius

Prepared by Esri
Latitude: 45.03568
Longitude: -92.82794

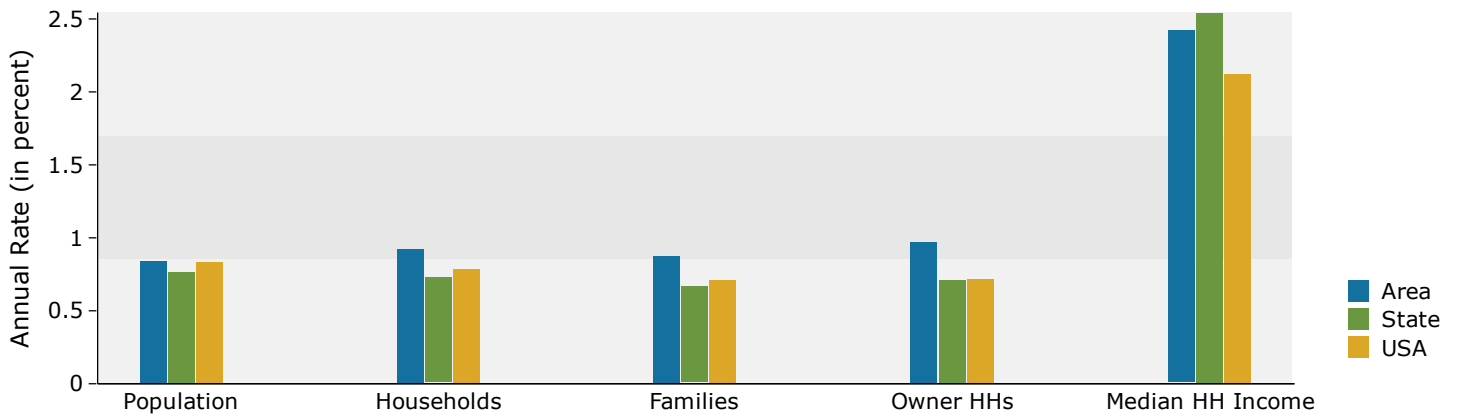
Summary	Census 2010	2017	2022				
Population	5,098	5,458	5,692				
Households	2,227	2,413	2,526				
Families	1,472	1,588	1,659				
Average Household Size	2.27	2.24	2.24				
Owner Occupied Housing Units	1,438	1,496	1,570				
Renter Occupied Housing Units	789	917	955				
Median Age	43.1	45.4	46.5				
Trends: 2017 - 2022 Annual Rate	Area	State	National				
Population	0.84%	0.76%	0.83%				
Households	0.92%	0.73%	0.79%				
Families	0.88%	0.67%	0.71%				
Owner HHs	0.97%	0.71%	0.72%				
Median Household Income	2.42%	2.54%	2.12%				
Households by Income	2017		2022				
	Number	Percent	Number	Percent			
	<\$15,000	159	6.6%	162	6.4%		
	\$15,000 - \$24,999	281	11.6%	277	11.0%		
	\$25,000 - \$34,999	178	7.4%	164	6.5%		
	\$35,000 - \$49,999	261	10.8%	242	9.6%		
	\$50,000 - \$74,999	464	19.2%	432	17.1%		
	\$75,000 - \$99,999	306	12.7%	323	12.8%		
	\$100,000 - \$149,999	441	18.3%	539	21.3%		
	\$150,000 - \$199,999	124	5.1%	150	5.9%		
	\$200,000+	198	8.2%	235	9.3%		
Median Household Income	\$65,488		\$73,788				
Average Household Income	\$92,874		\$104,533				
Per Capita Income	\$38,696		\$43,626				
Population by Age	Census 2010		2017		2022		
	Number	Percent	Number	Percent	Number	Percent	
	0 - 4	280	5.5%	269	4.9%	276	4.8%
	5 - 9	351	6.9%	305	5.6%	300	5.3%
	10 - 14	372	7.3%	349	6.4%	325	5.7%
	15 - 19	349	6.8%	326	6.0%	305	5.4%
	20 - 24	253	5.0%	327	6.0%	280	4.9%
	25 - 34	447	8.8%	576	10.6%	670	11.8%
	35 - 44	635	12.5%	549	10.1%	598	10.5%
	45 - 54	816	16.0%	745	13.6%	640	11.2%
	55 - 64	666	13.1%	807	14.8%	821	14.4%
	65 - 74	390	7.6%	610	11.2%	761	13.4%
	75 - 84	338	6.6%	348	6.4%	457	8.0%
	85+	202	4.0%	248	4.5%	259	4.6%
Race and Ethnicity	Census 2010		2017		2022		
	Number	Percent	Number	Percent	Number	Percent	
	White Alone	4,818	94.5%	5,085	93.2%	5,230	91.9%
	Black Alone	38	0.7%	57	1.0%	78	1.4%
	American Indian Alone	12	0.2%	13	0.2%	13	0.2%
	Asian Alone	101	2.0%	136	2.5%	165	2.9%
	Pacific Islander Alone	0	0.0%	0	0.0%	0	0.0%
	Some Other Race Alone	43	0.8%	56	1.0%	69	1.2%
	Two or More Races	86	1.7%	111	2.0%	136	2.4%
	Hispanic Origin (Any Race)	134	2.6%	182	3.3%	230	4.0%

Data Note: Income is expressed in current dollars.

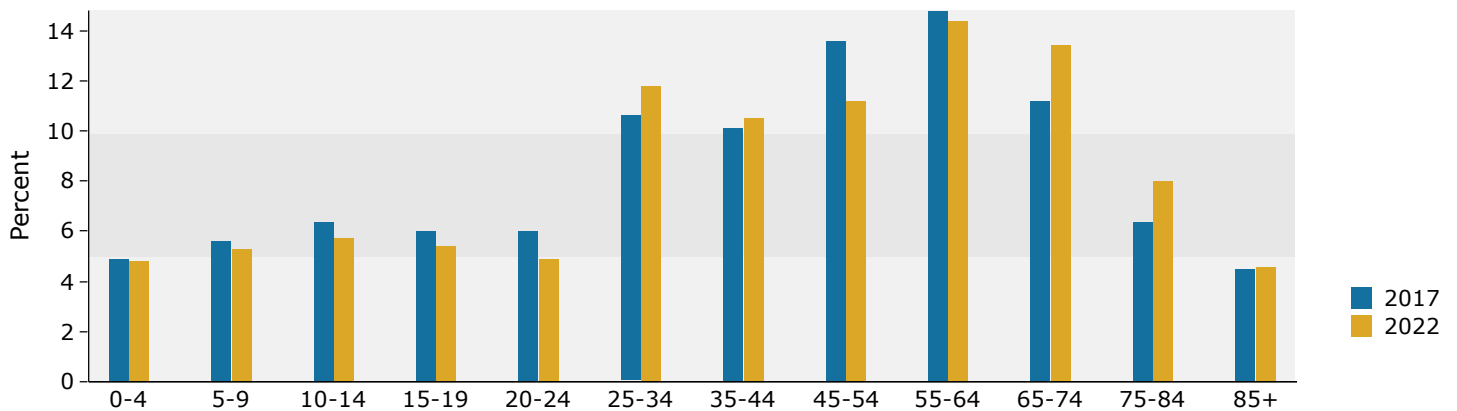
Source: U.S. Census Bureau, Census 2010 Summary File 1. Esri forecasts for 2017 and 2022.

August 29, 2017

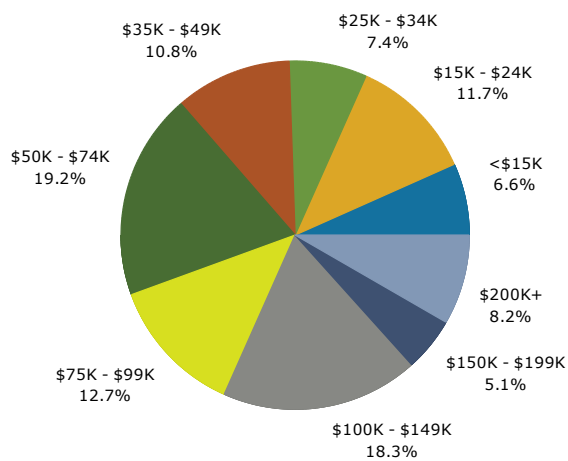
Trends 2017-2022



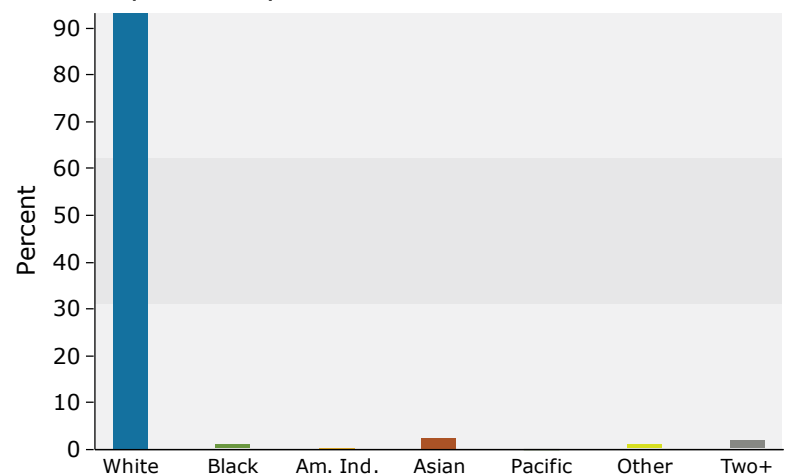
Population by Age



2017 Household Income



2017 Population by Race



2017 Percent Hispanic Origin: 3.3%



Demographic and Income Profile

13775 60th St N, Stillwater, Minnesota, 55082
Ring: 3 mile radius

Prepared by Esri
Latitude: 45.03568
Longitude: -92.82794

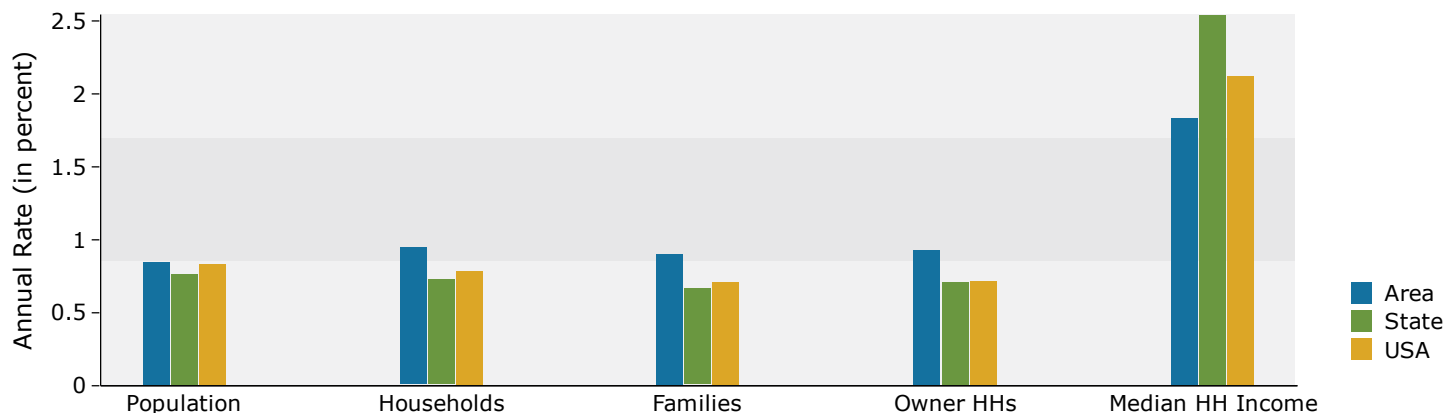
Summary	Census 2010	2017	2022				
Population	29,382	30,831	32,165				
Households	10,913	11,553	12,114				
Families	7,349	7,717	8,069				
Average Household Size	2.45	2.44	2.44				
Owner Occupied Housing Units	8,119	8,354	8,748				
Renter Occupied Housing Units	2,794	3,199	3,366				
Median Age	41.1	42.7	43.6				
Trends: 2017 - 2022 Annual Rate	Area	State	National				
Population	0.85%	0.76%	0.83%				
Households	0.95%	0.73%	0.79%				
Families	0.90%	0.67%	0.71%				
Owner HHs	0.93%	0.71%	0.72%				
Median Household Income	1.83%	2.54%	2.12%				
Households by Income	2017		2022				
	Number	Percent	Number	Percent			
	<\$15,000	772	6.7%	802	6.6%		
	\$15,000 - \$24,999	877	7.6%	862	7.1%		
	\$25,000 - \$34,999	851	7.4%	787	6.5%		
	\$35,000 - \$49,999	1,253	10.8%	1,182	9.8%		
	\$50,000 - \$74,999	1,904	16.5%	1,766	14.6%		
	\$75,000 - \$99,999	1,520	13.2%	1,581	13.1%		
	\$100,000 - \$149,999	2,299	19.9%	2,677	22.1%		
	\$150,000 - \$199,999	811	7.0%	964	8.0%		
	\$200,000+	1,266	11.0%	1,493	12.3%		
Median Household Income	\$76,497		\$83,764				
Average Household Income	\$104,319		\$116,659				
Per Capita Income	\$39,991		\$44,866				
Population by Age	Census 2010		2017		2022		
	Number	Percent	Number	Percent	Number	Percent	
	0 - 4	1,485	5.1%	1,394	4.5%	1,439	4.5%
	5 - 9	1,999	6.8%	1,655	5.4%	1,599	5.0%
	10 - 14	2,062	7.0%	2,056	6.7%	1,894	5.9%
	15 - 19	1,832	6.2%	1,953	6.3%	1,963	6.1%
	20 - 24	1,595	5.4%	1,935	6.3%	1,886	5.9%
	25 - 34	3,282	11.2%	3,608	11.7%	3,993	12.4%
	35 - 44	4,272	14.5%	3,705	12.0%	3,874	12.0%
	45 - 54	4,870	16.6%	4,601	14.9%	4,248	13.2%
	55 - 64	3,796	12.9%	4,424	14.3%	4,562	14.2%
	65 - 74	2,031	6.9%	3,053	9.9%	3,756	11.7%
	75 - 84	1,345	4.6%	1,491	4.8%	1,994	6.2%
	85+	813	2.8%	956	3.1%	957	3.0%
	Race and Ethnicity	Census 2010		2017		2022	
Number		Percent	Number	Percent	Number	Percent	
White Alone		27,017	91.9%	27,898	90.5%	28,754	89.4%
Black Alone		1,052	3.6%	1,313	4.3%	1,494	4.6%
American Indian Alone		310	1.1%	301	1.0%	305	0.9%
Asian Alone		390	1.3%	500	1.6%	596	1.9%
Pacific Islander Alone		6	0.0%	13	0.0%	18	0.1%
Some Other Race Alone		156	0.5%	205	0.7%	252	0.8%
Two or More Races		453	1.5%	600	1.9%	747	2.3%
Hispanic Origin (Any Race)		681	2.3%	887	2.9%	1,090	3.4%

Data Note: Income is expressed in current dollars.

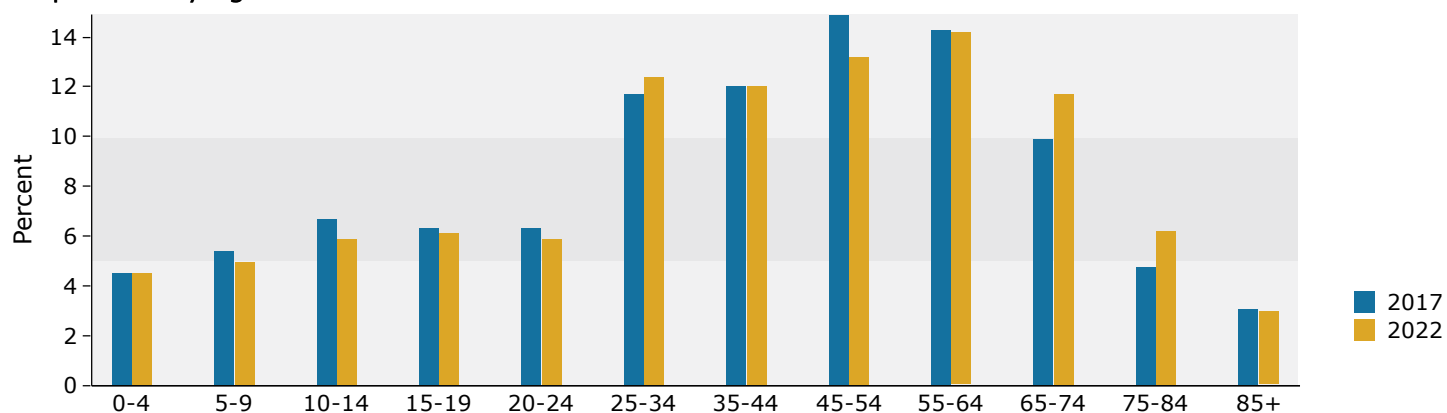
Source: U.S. Census Bureau, Census 2010 Summary File 1. Esri forecasts for 2017 and 2022.

August 29, 2017

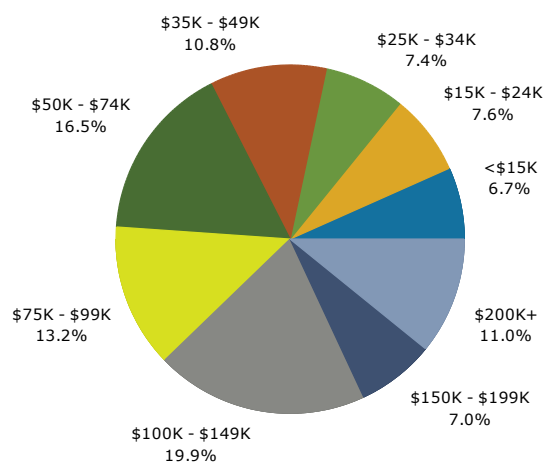
Trends 2017-2022



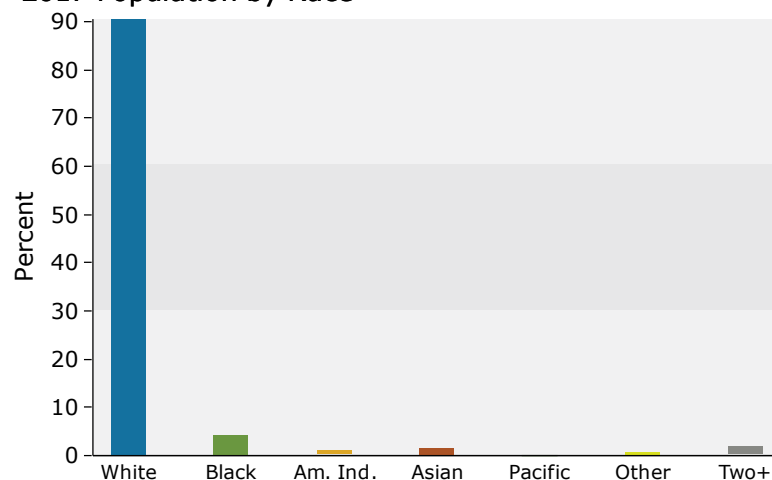
Population by Age



2017 Household Income



2017 Population by Race



2017 Percent Hispanic Origin: 2.9%



Demographic and Income Profile

13775 60th St N, Stillwater, Minnesota, 55082
Ring: 5 mile radius

Prepared by Esri
Latitude: 45.03568
Longitude: -92.82794

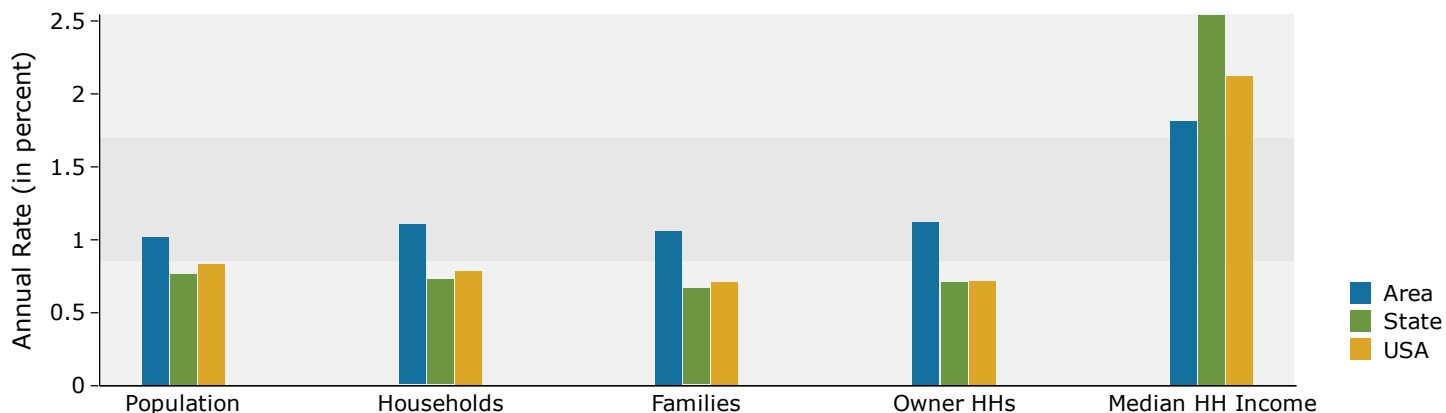
Summary	Census 2010	2017	2022				
Population	43,656	46,616	49,052				
Households	16,092	17,275	18,246				
Families	11,460	12,253	12,918				
Average Household Size	2.55	2.55	2.54				
Owner Occupied Housing Units	12,702	13,373	14,137				
Renter Occupied Housing Units	3,390	3,902	4,109				
Median Age	41.5	43.2	44.2				
Trends: 2017 - 2022 Annual Rate	Area	State	National				
Population	1.02%	0.76%	0.83%				
Households	1.10%	0.73%	0.79%				
Families	1.06%	0.67%	0.71%				
Owner HHs	1.12%	0.71%	0.72%				
Median Household Income	1.81%	2.54%	2.12%				
Households by Income	2017		2022				
	Number	Percent	Number	Percent			
	<\$15,000	924	5.3%	964	5.3%		
	\$15,000 - \$24,999	1,058	6.1%	1,036	5.7%		
	\$25,000 - \$34,999	1,112	6.4%	1,027	5.6%		
	\$35,000 - \$49,999	1,699	9.8%	1,592	8.7%		
	\$50,000 - \$74,999	2,678	15.5%	2,499	13.7%		
	\$75,000 - \$99,999	2,392	13.8%	2,547	14.0%		
	\$100,000 - \$149,999	3,686	21.3%	4,218	23.1%		
	\$150,000 - \$199,999	1,588	9.2%	1,846	10.1%		
	\$200,000+	2,137	12.4%	2,516	13.8%		
Median Household Income	\$85,432		\$93,440				
Average Household Income	\$113,327		\$126,039				
Per Capita Income	\$42,463		\$47,321				
Population by Age	Census 2010		2017		2022		
	Number	Percent	Number	Percent	Number	Percent	
	0 - 4	2,210	5.1%	2,121	4.5%	2,203	4.5%
	5 - 9	3,067	7.0%	2,587	5.5%	2,477	5.0%
	10 - 14	3,317	7.6%	3,261	7.0%	2,985	6.1%
	15 - 19	2,855	6.5%	3,098	6.6%	3,106	6.3%
	20 - 24	2,184	5.0%	2,734	5.9%	2,648	5.4%
	25 - 34	4,465	10.2%	5,154	11.1%	5,750	11.7%
	35 - 44	6,209	14.2%	5,415	11.6%	5,804	11.8%
	45 - 54	7,750	17.8%	7,210	15.5%	6,572	13.4%
	55 - 64	5,862	13.4%	7,133	15.3%	7,465	15.2%
	65 - 74	3,083	7.1%	4,718	10.1%	5,941	12.1%
	75 - 84	1,742	4.0%	2,079	4.5%	2,942	6.0%
	85+	913	2.1%	1,106	2.4%	1,159	2.4%
Race and Ethnicity	Census 2010		2017		2022		
	Number	Percent	Number	Percent	Number	Percent	
	White Alone	40,604	93.0%	42,742	91.7%	44,455	90.6%
	Black Alone	1,147	2.6%	1,450	3.1%	1,679	3.4%
	American Indian Alone	369	0.8%	373	0.8%	387	0.8%
	Asian Alone	640	1.5%	830	1.8%	1,000	2.0%
	Pacific Islander Alone	14	0.0%	28	0.1%	36	0.1%
	Some Other Race Alone	242	0.6%	325	0.7%	403	0.8%
	Two or More Races	642	1.5%	868	1.9%	1,092	2.2%
	Hispanic Origin (Any Race)	963	2.2%	1,282	2.8%	1,601	3.3%

Data Note: Income is expressed in current dollars.

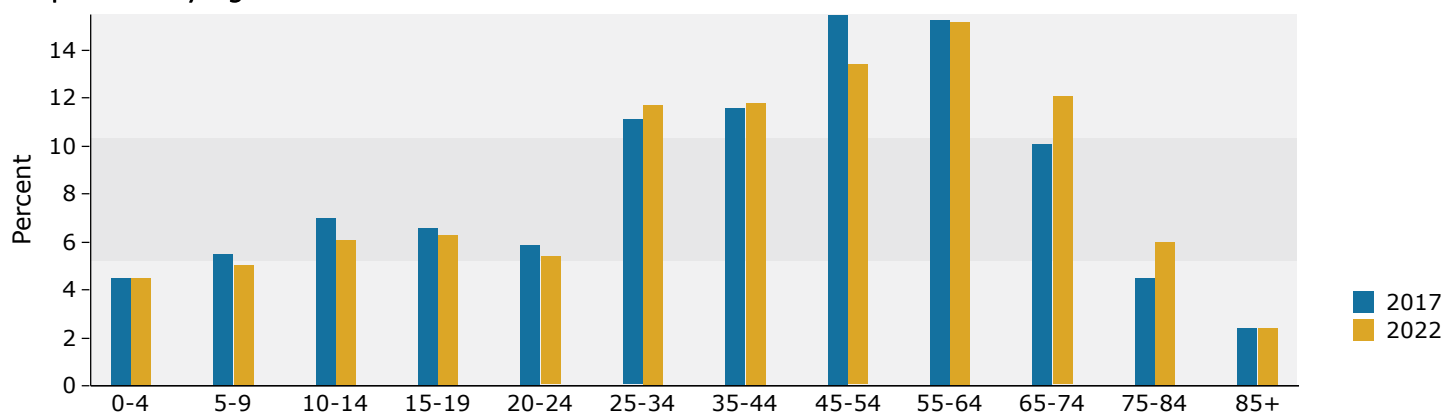
Source: U.S. Census Bureau, Census 2010 Summary File 1. Esri forecasts for 2017 and 2022.

August 29, 2017

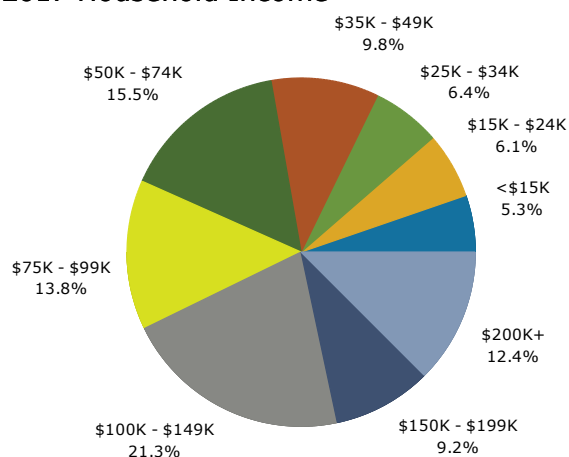
Trends 2017-2022



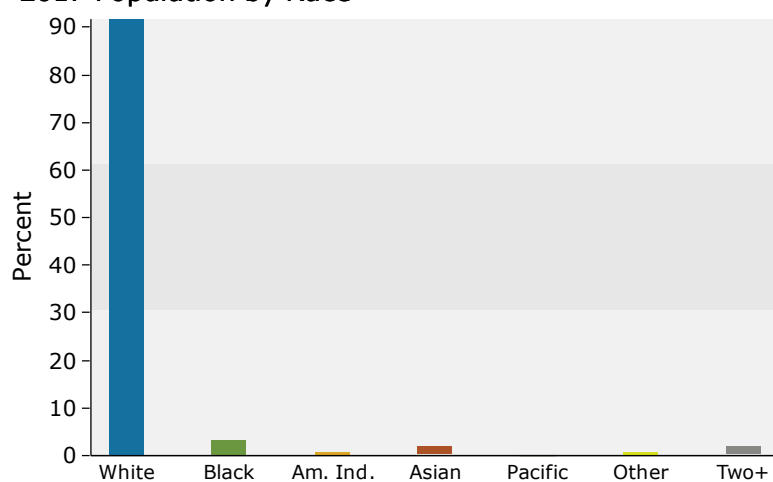
Population by Age



2017 Household Income



2017 Population by Race



2017 Percent Hispanic Origin: 2.8%



Market Profile

13775 60th St N, Stillwater, Minnesota, 55082
Rings: 1, 3, 5 mile radii

Prepared by Esri
Latitude: 45.03568
Longitude: -92.82794

	1 mile	3 miles	5 miles
Population Summary			
2000 Total Population	4,684	25,589	38,290
2010 Total Population	5,098	29,382	43,656
2017 Total Population	5,458	30,831	46,616
2017 Group Quarters	45	2,606	2,646
2022 Total Population	5,692	32,165	49,052
2017-2022 Annual Rate	0.84%	0.85%	1.02%
2017 Total Daytime Population	11,348	36,626	46,516
Workers	8,510	22,289	24,747
Residents	2,838	14,337	21,769
Household Summary			
2000 Households	1,852	9,152	13,620
2000 Average Household Size	2.53	2.55	2.64
2010 Households	2,227	10,913	16,092
2010 Average Household Size	2.27	2.45	2.55
2017 Households	2,413	11,553	17,275
2017 Average Household Size	2.24	2.44	2.55
2022 Households	2,526	12,114	18,246
2022 Average Household Size	2.24	2.44	2.54
2017-2022 Annual Rate	0.92%	0.95%	1.10%
2010 Families	1,472	7,349	11,460
2010 Average Family Size	2.82	3.01	3.03
2017 Families	1,588	7,717	12,253
2017 Average Family Size	2.79	3.00	3.03
2022 Families	1,659	8,069	12,918
2022 Average Family Size	2.78	3.00	3.03
2017-2022 Annual Rate	0.88%	0.90%	1.06%
Housing Unit Summary			
2000 Housing Units	1,900	9,379	13,952
Owner Occupied Housing Units	65.8%	76.7%	80.3%
Renter Occupied Housing Units	31.6%	20.9%	17.3%
Vacant Housing Units	2.5%	2.4%	2.4%
2010 Housing Units	2,358	11,712	17,128
Owner Occupied Housing Units	61.0%	69.3%	74.2%
Renter Occupied Housing Units	33.5%	23.9%	19.8%
Vacant Housing Units	5.6%	6.8%	6.0%
2017 Housing Units	2,553	12,401	18,377
Owner Occupied Housing Units	58.6%	67.4%	72.8%
Renter Occupied Housing Units	35.9%	25.8%	21.2%
Vacant Housing Units	5.5%	6.8%	6.0%
2022 Housing Units	2,674	13,009	19,415
Owner Occupied Housing Units	58.7%	67.2%	72.8%
Renter Occupied Housing Units	35.7%	25.9%	21.2%
Vacant Housing Units	5.5%	6.9%	6.0%
Median Household Income			
2017	\$65,488	\$76,497	\$85,432
2022	\$73,788	\$83,764	\$93,440
Median Home Value			
2017	\$280,969	\$288,097	\$316,269
2022	\$313,725	\$333,151	\$359,291
Per Capita Income			
2017	\$38,696	\$39,991	\$42,463
2022	\$43,626	\$44,866	\$47,321
Median Age			
2010	43.1	41.1	41.5
2017	45.4	42.7	43.2
2022	46.5	43.6	44.2

Data Note: Household population includes persons not residing in group quarters. Average Household Size is the household population divided by total households. Persons in families include the householder and persons related to the householder by birth, marriage, or adoption. Per Capita Income represents the income received by all persons aged 15 years and over divided by the total population.

Source: U.S. Census Bureau, Census 2010 Summary File 1. Esri forecasts for 2017 and 2022 Esri converted Census 2000 data into 2010 geography.

August 29, 2017



Market Profile

13775 60th St N, Stillwater, Minnesota, 55082
Rings: 1, 3, 5 mile radii

Prepared by Esri
Latitude: 45.03568
Longitude: -92.82794

	1 mile	3 miles	5 miles
2017 Households by Income			
Household Income Base	2,413	11,553	17,275
<\$15,000	6.6%	6.7%	5.3%
\$15,000 - \$24,999	11.6%	7.6%	6.1%
\$25,000 - \$34,999	7.4%	7.4%	6.4%
\$35,000 - \$49,999	10.8%	10.8%	9.8%
\$50,000 - \$74,999	19.2%	16.5%	15.5%
\$75,000 - \$99,999	12.7%	13.2%	13.8%
\$100,000 - \$149,999	18.3%	19.9%	21.3%
\$150,000 - \$199,999	5.1%	7.0%	9.2%
\$200,000+	8.2%	11.0%	12.4%
Average Household Income	\$92,874	\$104,319	\$113,327
2022 Households by Income			
Household Income Base	2,526	12,114	18,246
<\$15,000	6.4%	6.6%	5.3%
\$15,000 - \$24,999	11.0%	7.1%	5.7%
\$25,000 - \$34,999	6.5%	6.5%	5.6%
\$35,000 - \$49,999	9.6%	9.8%	8.7%
\$50,000 - \$74,999	17.1%	14.6%	13.7%
\$75,000 - \$99,999	12.8%	13.1%	14.0%
\$100,000 - \$149,999	21.3%	22.1%	23.1%
\$150,000 - \$199,999	5.9%	8.0%	10.1%
\$200,000+	9.3%	12.3%	13.8%
Average Household Income	\$104,533	\$116,659	\$126,039
2017 Owner Occupied Housing Units by Value			
Total	1,496	8,354	13,373
<\$50,000	1.7%	1.6%	1.4%
\$50,000 - \$99,999	3.4%	1.4%	1.3%
\$100,000 - \$149,999	2.9%	4.2%	3.9%
\$150,000 - \$199,999	9.2%	14.1%	11.7%
\$200,000 - \$249,999	20.9%	16.7%	13.9%
\$250,000 - \$299,999	19.3%	15.8%	14.2%
\$300,000 - \$399,999	17.9%	20.9%	21.6%
\$400,000 - \$499,999	7.3%	11.0%	13.8%
\$500,000 - \$749,999	9.9%	10.3%	12.8%
\$750,000 - \$999,999	6.0%	3.2%	3.7%
\$1,000,000 +	1.5%	0.9%	1.5%
Average Home Value	\$351,456	\$338,239	\$366,587
2022 Owner Occupied Housing Units by Value			
Total	1,570	8,748	14,137
<\$50,000	0.8%	0.7%	0.7%
\$50,000 - \$99,999	1.9%	0.8%	0.7%
\$100,000 - \$149,999	1.8%	2.6%	2.4%
\$150,000 - \$199,999	6.1%	9.4%	7.7%
\$200,000 - \$249,999	16.6%	12.7%	10.5%
\$250,000 - \$299,999	19.7%	15.6%	13.4%
\$300,000 - \$399,999	22.7%	25.0%	24.6%
\$400,000 - \$499,999	9.0%	14.4%	17.3%
\$500,000 - \$749,999	11.7%	13.3%	16.0%
\$750,000 - \$999,999	7.7%	4.2%	4.7%
\$1,000,000 +	1.9%	1.3%	2.1%
Average Home Value	\$390,971	\$380,616	\$408,273

Data Note: Income represents the preceding year, expressed in current dollars. Household income includes wage and salary earnings, interest dividends, net rents, pensions, SSI and welfare payments, child support, and alimony.

Source: U.S. Census Bureau, Census 2010 Summary File 1. Esri forecasts for 2017 and 2022 Esri converted Census 2000 data into 2010 geography.

August 29, 2017



Market Profile

13775 60th St N, Stillwater, Minnesota, 55082
Rings: 1, 3, 5 mile radii

Prepared by Esri
Latitude: 45.03568
Longitude: -92.82794

	1 mile	3 miles	5 miles
2010 Population by Age			
Total	5,096	29,382	43,656
0 - 4	5.5%	5.1%	5.1%
5 - 9	6.9%	6.8%	7.0%
10 - 14	7.3%	7.0%	7.6%
15 - 24	11.8%	11.7%	11.5%
25 - 34	8.8%	11.2%	10.2%
35 - 44	12.5%	14.5%	14.2%
45 - 54	16.0%	16.6%	17.8%
55 - 64	13.1%	12.9%	13.4%
65 - 74	7.7%	6.9%	7.1%
75 - 84	6.6%	4.6%	4.0%
85 +	4.0%	2.8%	2.1%
18 +	75.5%	76.9%	75.8%
2017 Population by Age			
Total	5,459	30,831	46,616
0 - 4	4.9%	4.5%	4.5%
5 - 9	5.6%	5.4%	5.5%
10 - 14	6.4%	6.7%	7.0%
15 - 24	12.0%	12.6%	12.5%
25 - 34	10.6%	11.7%	11.1%
35 - 44	10.1%	12.0%	11.6%
45 - 54	13.6%	14.9%	15.5%
55 - 64	14.8%	14.3%	15.3%
65 - 74	11.2%	9.9%	10.1%
75 - 84	6.4%	4.8%	4.5%
85 +	4.5%	3.1%	2.4%
18 +	78.9%	79.2%	78.4%
2022 Population by Age			
Total	5,692	32,165	49,052
0 - 4	4.8%	4.5%	4.5%
5 - 9	5.3%	5.0%	5.0%
10 - 14	5.7%	5.9%	6.1%
15 - 24	10.3%	12.0%	11.7%
25 - 34	11.8%	12.4%	11.7%
35 - 44	10.5%	12.0%	11.8%
45 - 54	11.2%	13.2%	13.4%
55 - 64	14.4%	14.2%	15.2%
65 - 74	13.4%	11.7%	12.1%
75 - 84	8.0%	6.2%	6.0%
85 +	4.6%	3.0%	2.4%
18 +	80.4%	80.6%	80.1%
2010 Population by Sex			
Males	2,384	15,289	22,431
Females	2,714	14,093	21,225
2017 Population by Sex			
Males	2,552	15,965	23,820
Females	2,906	14,866	22,796
2022 Population by Sex			
Males	2,658	16,644	25,028
Females	3,033	15,521	24,024

Source: U.S. Census Bureau, Census 2010 Summary File 1. Esri forecasts for 2017 and 2022 Esri converted Census 2000 data into 2010 geography.

August 29, 2017



Market Profile

13775 60th St N, Stillwater, Minnesota, 55082
Rings: 1, 3, 5 mile radii

Prepared by Esri
Latitude: 45.03568
Longitude: -92.82794

	1 mile	3 miles	5 miles
2010 Population by Race/Ethnicity			
Total	5,098	29,384	43,658
White Alone	94.5%	91.9%	93.0%
Black Alone	0.7%	3.6%	2.6%
American Indian Alone	0.2%	1.1%	0.8%
Asian Alone	2.0%	1.3%	1.5%
Pacific Islander Alone	0.0%	0.0%	0.0%
Some Other Race Alone	0.8%	0.5%	0.6%
Two or More Races	1.7%	1.5%	1.5%
Hispanic Origin	2.6%	2.3%	2.2%
Diversity Index	15.2	19.1	17.1
2017 Population by Race/Ethnicity			
Total	5,458	30,830	46,616
White Alone	93.2%	90.5%	91.7%
Black Alone	1.0%	4.3%	3.1%
American Indian Alone	0.2%	1.0%	0.8%
Asian Alone	2.5%	1.6%	1.8%
Pacific Islander Alone	0.0%	0.0%	0.1%
Some Other Race Alone	1.0%	0.7%	0.7%
Two or More Races	2.0%	1.9%	1.9%
Hispanic Origin	3.4%	2.9%	2.8%
Diversity Index	18.8	22.5	20.3
2022 Population by Race/Ethnicity			
Total	5,691	32,166	49,052
White Alone	91.9%	89.4%	90.6%
Black Alone	1.4%	4.6%	3.4%
American Indian Alone	0.2%	0.9%	0.8%
Asian Alone	2.9%	1.9%	2.0%
Pacific Islander Alone	0.0%	0.1%	0.1%
Some Other Race Alone	1.2%	0.8%	0.8%
Two or More Races	2.4%	2.3%	2.2%
Hispanic Origin	4.0%	3.4%	3.3%
Diversity Index	22.0	25.1	22.9
2010 Population by Relationship and Household Type			
Total	5,098	29,382	43,656
In Households	99.2%	91.1%	93.9%
In Family Households	83.1%	76.7%	81.1%
Householder	27.8%	25.1%	26.3%
Spouse	21.4%	20.2%	21.8%
Child	31.1%	28.8%	30.3%
Other relative	1.2%	1.2%	1.3%
Nonrelative	1.6%	1.4%	1.5%
In Nonfamily Households	16.1%	14.4%	12.8%
In Group Quarters	0.8%	8.9%	6.1%
Institutionalized Population	0.8%	8.7%	5.8%
Noninstitutionalized Population	0.0%	0.2%	0.3%

Data Note: Persons of Hispanic Origin may be of any race. The Diversity Index measures the probability that two people from the same area will be from different race/ethnic groups.

Source: U.S. Census Bureau, Census 2010 Summary File 1. Esri forecasts for 2017 and 2022 Esri converted Census 2000 data into 2010 geography.

August 29, 2017



Market Profile

13775 60th St N, Stillwater, Minnesota, 55082
Rings: 1, 3, 5 mile radii

Prepared by Esri
Latitude: 45.03568
Longitude: -92.82794

	1 mile	3 miles	5 miles
2017 Population 25+ by Educational Attainment			
Total	3,882	21,838	32,816
Less than 9th Grade	1.4%	1.3%	1.1%
9th - 12th Grade, No Diploma	2.4%	2.5%	2.3%
High School Graduate	21.5%	17.3%	18.2%
GED/Alternative Credential	2.3%	6.3%	4.7%
Some College, No Degree	23.4%	20.6%	20.2%
Associate Degree	11.9%	10.2%	10.3%
Bachelor's Degree	24.5%	27.5%	28.3%
Graduate/Professional Degree	12.6%	14.4%	14.9%
2017 Population 15+ by Marital Status			
Total	4,535	25,725	38,647
Never Married	28.5%	31.0%	29.2%
Married	48.5%	51.0%	55.8%
Widowed	8.1%	5.9%	4.9%
Divorced	14.9%	12.1%	10.0%
2017 Civilian Population 16+ in Labor Force			
Civilian Employed	97.2%	96.3%	96.3%
Civilian Unemployed (Unemployment Rate)	2.8%	3.7%	3.7%
2017 Employed Population 16+ by Industry			
Total	2,679	14,629	23,137
Agriculture/Mining	0.9%	1.3%	1.1%
Construction	2.3%	4.6%	6.2%
Manufacturing	16.8%	15.1%	15.1%
Wholesale Trade	1.9%	2.0%	2.5%
Retail Trade	12.7%	10.0%	10.0%
Transportation/Utilities	4.0%	3.8%	3.6%
Information	0.8%	0.6%	0.8%
Finance/Insurance/Real Estate	10.6%	9.9%	9.4%
Services	45.5%	48.5%	47.4%
Public Administration	4.3%	4.1%	3.8%
2017 Employed Population 16+ by Occupation			
Total	2,679	14,629	23,138
White Collar	64.7%	67.8%	69.0%
Management/Business/Financial	19.6%	20.1%	20.8%
Professional	23.9%	25.1%	25.4%
Sales	10.3%	10.3%	10.6%
Administrative Support	10.9%	12.2%	12.4%
Services	20.9%	17.7%	16.2%
Blue Collar	14.4%	14.6%	14.8%
Farming/Forestry/Fishing	0.8%	0.6%	0.4%
Construction/Extraction	1.9%	2.8%	3.7%
Installation/Maintenance/Repair	0.4%	1.4%	1.6%
Production	5.7%	5.7%	5.4%
Transportation/Material Moving	5.6%	4.0%	3.7%
2010 Population By Urban/ Rural Status			
Total Population	5,098	29,382	43,656
Population Inside Urbanized Area	92.2%	93.4%	71.3%
Population Inside Urbanized Cluster	0.0%	0.0%	8.8%
Rural Population	7.8%	6.6%	19.9%

Source: U.S. Census Bureau, Census 2010 Summary File 1. Esri forecasts for 2017 and 2022 Esri converted Census 2000 data into 2010 geography.

August 29, 2017



Market Profile

13775 60th St N, Stillwater, Minnesota, 55082
Rings: 1, 3, 5 mile radii

Prepared by Esri
Latitude: 45.03568
Longitude: -92.82794

	1 mile	3 miles	5 miles
2010 Households by Type			
Total	2,227	10,914	16,093
Households with 1 Person	30.2%	27.7%	23.8%
Households with 2+ People	69.8%	72.3%	76.2%
Family Households	66.1%	67.3%	71.2%
Husband-wife Families	51.2%	54.0%	59.0%
With Related Children	20.3%	23.2%	25.5%
Other Family (No Spouse Present)	15.0%	13.3%	12.2%
Other Family with Male Householder	3.7%	3.8%	3.8%
With Related Children	2.6%	2.4%	2.4%
Other Family with Female Householder	11.2%	9.5%	8.5%
With Related Children	8.4%	6.5%	5.7%
Nonfamily Households	3.7%	5.0%	5.0%
All Households with Children	31.4%	32.5%	33.9%
Multigenerational Households	1.7%	1.5%	1.6%
Unmarried Partner Households	4.9%	5.4%	5.4%
Male-female	4.4%	4.9%	4.8%
Same-sex	0.5%	0.5%	0.5%
2010 Households by Size			
Total	2,228	10,915	16,095
1 Person Household	30.2%	27.7%	23.8%
2 Person Household	35.1%	34.9%	36.1%
3 Person Household	14.3%	15.2%	15.6%
4 Person Household	12.7%	13.7%	15.0%
5 Person Household	5.3%	6.1%	6.6%
6 Person Household	1.8%	1.7%	2.0%
7 + Person Household	0.7%	0.7%	0.9%
2010 Households by Tenure and Mortgage Status			
Total	2,227	10,913	16,092
Owner Occupied	64.6%	74.4%	78.9%
Owned with a Mortgage/Loan	51.2%	58.5%	61.6%
Owned Free and Clear	13.3%	15.9%	17.3%
Renter Occupied	35.4%	25.6%	21.1%
2010 Housing Units By Urban/ Rural Status			
Total Housing Units	2,358	11,712	17,128
Housing Units Inside Urbanized Area	92.7%	93.7%	72.2%
Housing Units Inside Urbanized Cluster	0.0%	0.0%	9.2%
Rural Housing Units	7.3%	6.3%	18.6%

Data Note: Households with children include any households with people under age 18, related or not. Multigenerational households are families with 3 or more parent-child relationships. Unmarried partner households are usually classified as nonfamily households unless there is another member of the household related to the householder. Multigenerational and unmarried partner households are reported only to the tract level. Esri estimated block group data, which is used to estimate polygons or non-standard geography.

Source: U.S. Census Bureau, Census 2010 Summary File 1. Esri forecasts for 2017 and 2022 Esri converted Census 2000 data into 2010 geography.

August 29, 2017



Market Profile

13775 60th St N, Stillwater, Minnesota, 55082
Rings: 1, 3, 5 mile radii

Prepared by Esri
Latitude: 45.03568
Longitude: -92.82794

	1 mile	3 miles	5 miles
Top 3 Tapestry Segments			
1.	Parks and Rec (5C)	Parks and Rec (5C)	Savvy Suburbanites (1D)
2.	Golden Years (9B)	Savvy Suburbanites (1D)	Parks and Rec (5C)
3.	Green Acres (6A)	Old and Newcomers (8F)	Professional Pride (1B)
2017 Consumer Spending			
Apparel & Services: Total \$	\$5,842,631	\$31,581,008	\$51,411,710
Average Spent	\$2,421.31	\$2,733.58	\$2,976.08
Spending Potential Index	112	127	138
Education: Total \$	\$4,405,327	\$23,849,601	\$38,678,771
Average Spent	\$1,825.66	\$2,064.36	\$2,239.00
Spending Potential Index	125	142	154
Entertainment/Recreation: Total \$	\$8,536,767	\$45,822,488	\$74,336,235
Average Spent	\$3,537.82	\$3,966.28	\$4,303.11
Spending Potential Index	113	127	138
Food at Home: Total \$	\$13,453,589	\$71,204,937	\$114,356,733
Average Spent	\$5,575.46	\$6,163.33	\$6,619.78
Spending Potential Index	111	122	131
Food Away from Home: Total \$	\$8,920,734	\$48,000,809	\$77,932,399
Average Spent	\$3,696.95	\$4,154.84	\$4,511.28
Spending Potential Index	111	125	135
Health Care: Total \$	\$15,474,464	\$81,968,928	\$132,317,395
Average Spent	\$6,412.96	\$7,095.03	\$7,659.47
Spending Potential Index	115	127	137
HH Furnishings & Equipment: Total \$	\$5,249,189	\$28,399,060	\$46,324,923
Average Spent	\$2,175.38	\$2,458.15	\$2,681.62
Spending Potential Index	112	126	138
Personal Care Products & Services: Total \$	\$2,188,911	\$11,741,375	\$19,080,735
Average Spent	\$907.13	\$1,016.31	\$1,104.53
Spending Potential Index	114	128	139
Shelter: Total \$	\$45,705,977	\$241,978,256	\$388,753,426
Average Spent	\$18,941.56	\$20,945.06	\$22,503.82
Spending Potential Index	117	129	139
Support Payments/Cash Contributions/Gifts in Kind: Total \$	\$6,522,146	\$34,964,139	\$57,055,418
Average Spent	\$2,702.92	\$3,026.41	\$3,302.77
Spending Potential Index	115	129	141
Travel: Total \$	\$5,926,832	\$32,201,402	\$52,767,247
Average Spent	\$2,456.21	\$2,787.28	\$3,054.54
Spending Potential Index	119	135	147
Vehicle Maintenance & Repairs: Total \$	\$2,906,002	\$15,528,339	\$25,092,819
Average Spent	\$1,204.31	\$1,344.10	\$1,452.55
Spending Potential Index	112	125	135

Data Note: Consumer spending shows the amount spent on a variety of goods and services by households that reside in the area. Expenditures are shown by broad budget categories that are not mutually exclusive. Consumer spending does not equal business revenue. Total and Average Amount Spent Per Household represent annual figures. The Spending Potential Index represents the amount spent in the area relative to a national average of 100.

Source: Consumer Spending data are derived from the 2013 and 2014 Consumer Expenditure Surveys, Bureau of Labor Statistics. Esri.

Source: U.S. Census Bureau, Census 2010 Summary File 1. Esri forecasts for 2017 and 2022 Esri converted Census 2000 data into 2010 geography.

August 29, 2017