

FOR LEASE > RETAIL > SHOCKOE VALLEY > CHURCH HILL

2018 E. Broad Street

RICHMOND, VA 23223



LEASING NOW



PROPERTY FEATURES

- > Easy access to Shockoe Bottom and Downtown
- > 7,238 SF total space - 1,000 SF office space
- > Total site acreage 0.44
- > 38 on-site parking spaces
- > Zoned M-1
- > Signalized intersection
- > Potential for outdoor patio/seating
- > Renovations planned on Historic 1900 building
- > Call agent for details



DEMOGRAPHIC FACTS	1 Mile	3 Miles	5 Miles
Population	16,806	107,566	220,032
Total Employees	27,601	66,202	122,421
Average HH Income	\$55,070	\$48,718	\$55,369

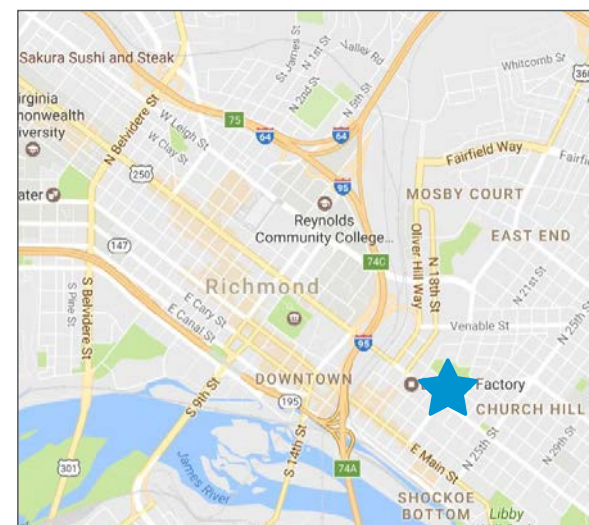
Traffic Counts - Broad Street ±20,000 VPD

AGENT: SARA MARIE WILLIAMSON
804 591 2425
RICHMOND, VA
sara.williamson@colliers.com
owner/agent

AGENT: BILL MATTOX SIOR
804 591 2428
RICHMOND, VA
bill.mattox@colliers.com
owner/agent

COLLIERS INTERNATIONAL
7200 Glen Forest Drive, Suite 200
Richmond, VA 23226
www.colliers.com/richmond

FOR LEASE > 2018 E. Broad Street



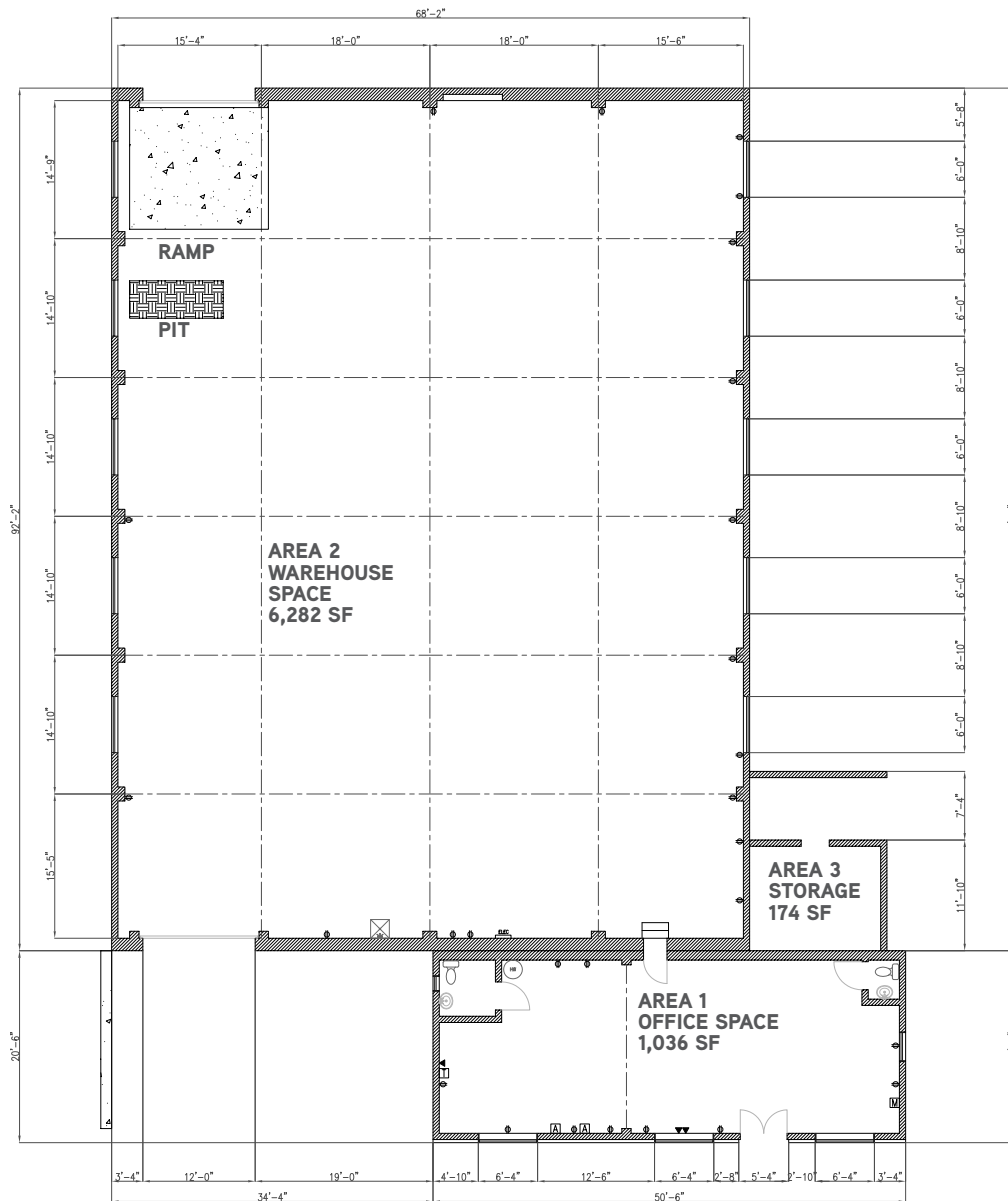
AGENT: SARA MARIE WILLIAMSON
804 591 2425
RICHMOND, VA
sara.williamson@colliers.com
owner/agent

AGENT: BILL MATTOX SIOR
804 591 2428
RICHMOND, VA
bill.mattox@colliers.com
owner/agent

COLLIERS INTERNATIONAL
7200 Glen Forest Drive, Suite 200
Richmond, VA 23226
www.colliers.com/richmond

FOR LEASE > 2018 E. Broad Street

FLOOR PLAN



The information contained herein was obtained from sources, believed reliable, however, Colliers International makes no guarantees, warranties or representations as to the completeness or accuracy thereof. The presentation of this property is submitted subject to errors, omissions, change of price or conditions prior to sale or lease, or withdrawal without notice.

File Name: BroadEst_2018_Lease rev 10-4-17

AGENT: SARA MARIE WILLIAMSON
804 591 2425
RICHMOND, VA
sara.williamson@colliers.com
owner/agent

AGENT: BILL MATTOX SIOR
804 591 2428
RICHMOND, VA
bill.mattox@colliers.com
owner/agent

COLLIERS INTERNATIONAL
7200 Glen Forest Drive, Suite 200
Richmond, VA 23226
www.colliers.com/richmond