

FOR LEASE > WAREHOUSE SPACE

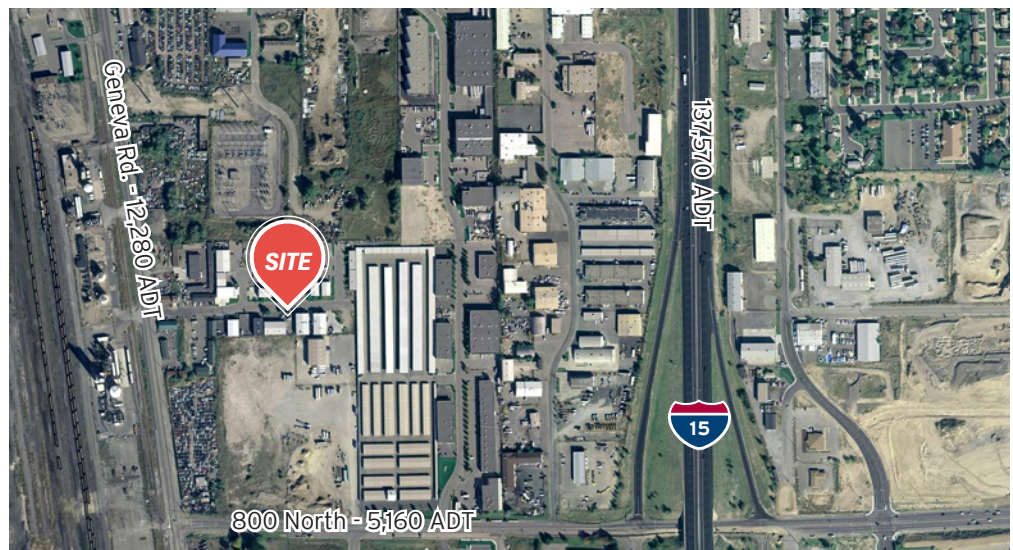
1549 & 1551 West 960 North

1549 WEST 960 NORTH OREM, UTAH



Property Information

- > 3,000-6,000 SF Warehouse/Office
400-800 SF Office
2,600-5,200 SF Warehouse
- > (1) 10'x14' GL Door per Unit
- > Located in the heart of Orem
- > Quick I-15 Access via 800 North and Geneva Road
- > Lease Rate: \$2,100/month MG



Mike McMurtrey
+1 801 735 4747
mike.mucmurtrey@colliers.com

Brandon Huntsman
+1 801 830 9232
brandon.huntsman@colliers.com

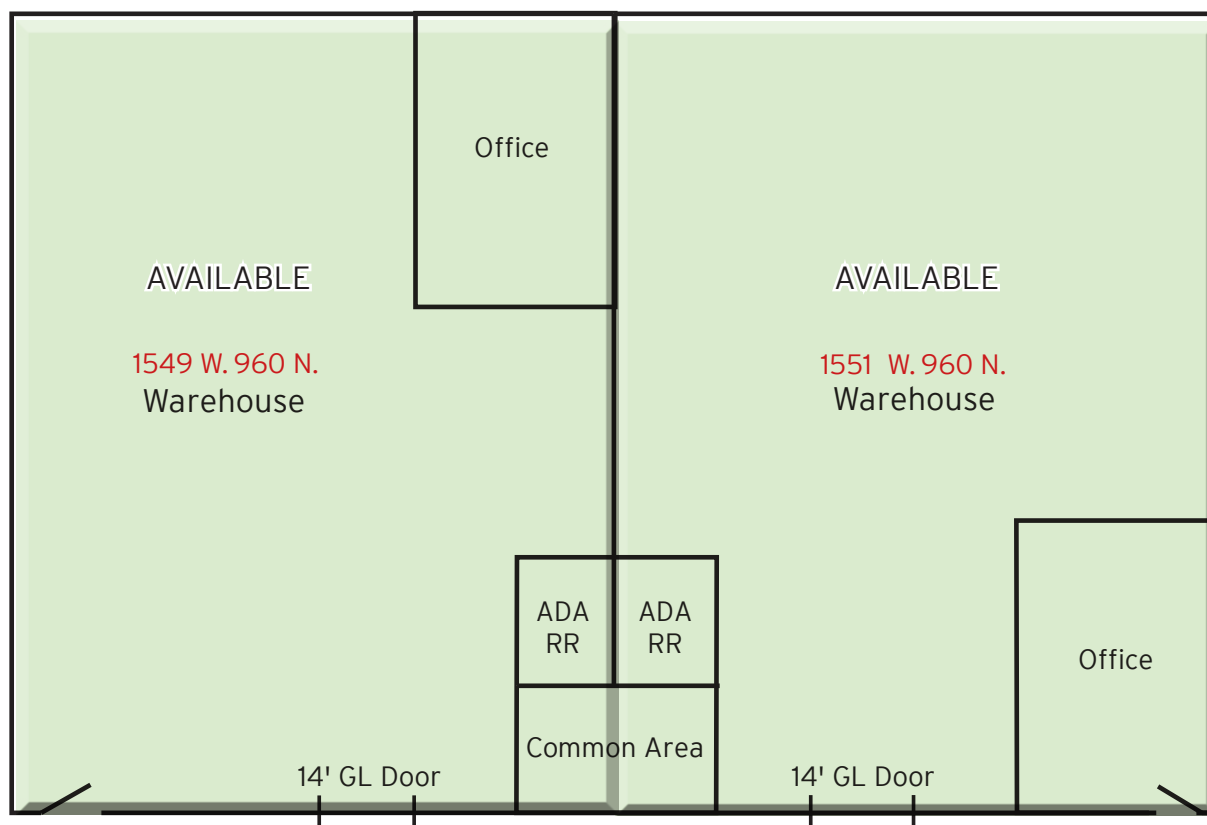
Colliers International
2100 Pleasant Grove Blvd. | Suite 200
Pleasant Grove, UT 84062
P: +1 801 610 1300

FOR LEASE > WAREHOUSE SPACE

1549 & 1551 West 960 North

1549 WEST 960 NORTH OREM, UTAH

FLOOR PLAN



This document has been prepared by Colliers International for advertising and general information only. Colliers International makes no guarantees, representations or warranties of any kind, expressed or implied, regarding the information including, but not limited to, warranties of content, accuracy and reliability. Any interested party should undertake their own inquiries as to the accuracy of the information. Colliers International excludes unequivocally all inferred or implied terms, conditions and warranties arising out of this document and excludes all liability for loss and damages arising there from. This publication is the copyrighted property of Colliers International and/or its licensor(s). ©2017. All rights reserved.

Colliers International
2100 Pleasant Grove Blvd. | Suite 200
Pleasant Grove, UT 84062
P: +1 801 610 1300

