



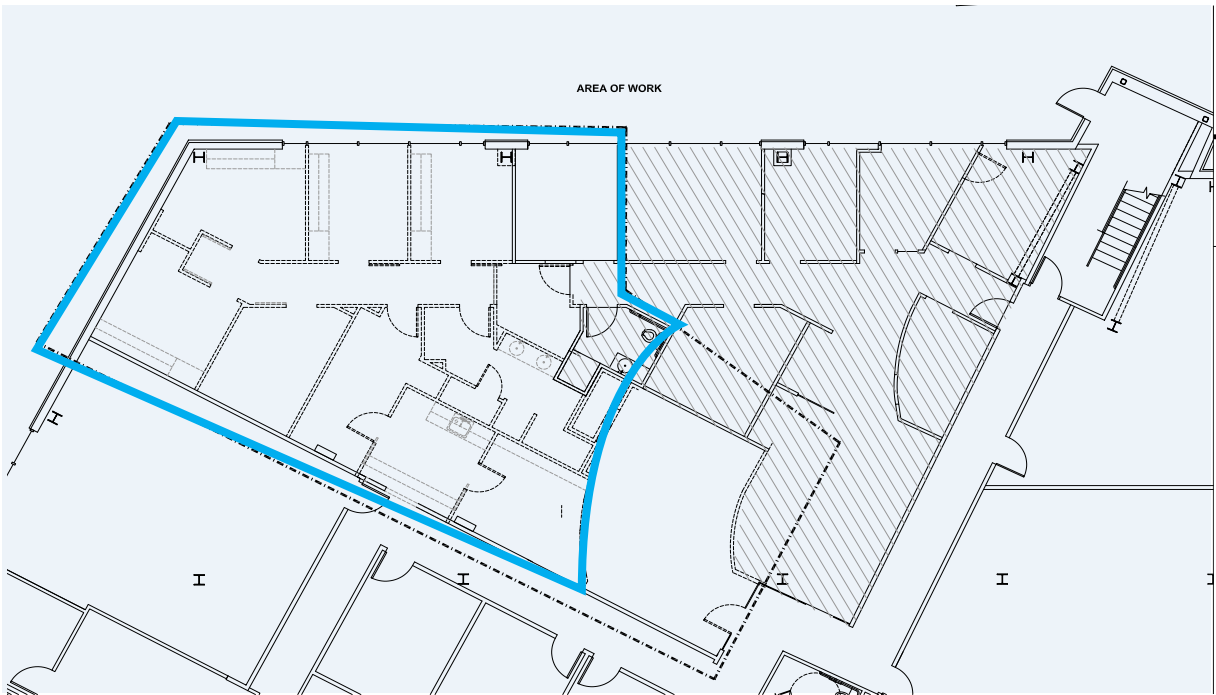
4915 25TH AVENUE N.E., SEATTLE, WA

## Short term sublease in University District!

1,484 SF of office space available  
immediately. In-suite kitchenette  
and restroom with shower.

## Below Market Rent

**Casey Gibson**  
Associate Vice President  
+1 206 654 7418  
[casey.m.gibson@colliers.com](mailto:casey.m.gibson@colliers.com)



# Across the street from University Village.

Located just off 25th Avenue NE and the Burke-Gilman Trail. Excellent transit options, major bus line 2 blocks away. 20 minute walk from Link Light Rail Station.

1,484 SF  
AVAILABLE



Wheelchair Accessible



Parking



Link Rail Access > 20 Mins



Bike Storage



Walk Score™ 86



Gym Nearby



24-Hour Security



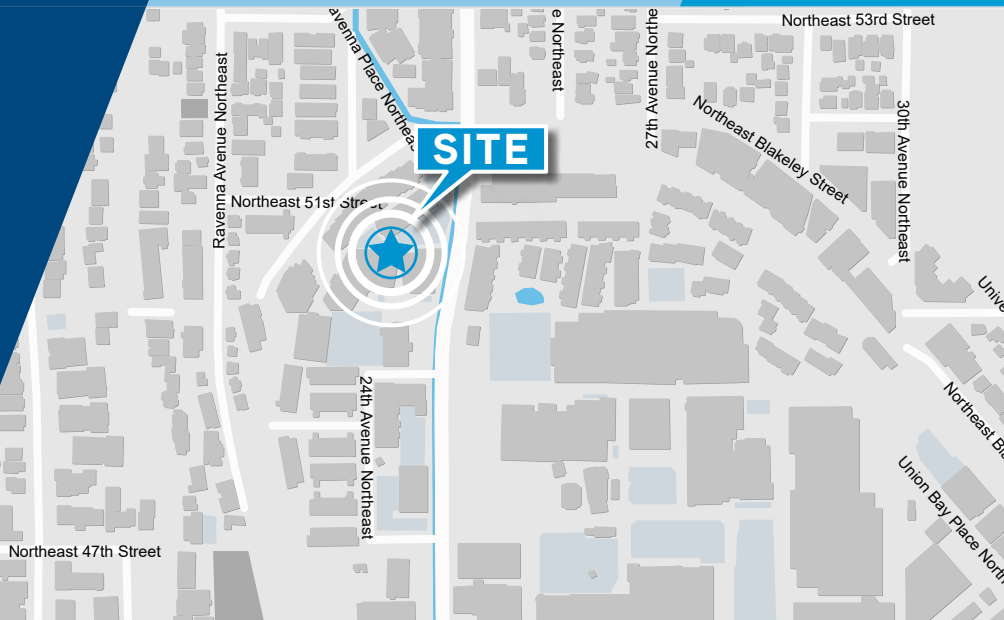
Showers On Site



Fibre-Optic Enabled



Shopping 3 Mins







**Casey Gibson**  
Associate Vice President  
+1 206 654 7418  
casey.m.gibson@colliers.com

Colliers International  
601 Union Street, Suite 5300  
Seattle, WA 98101  
P: +1 206 223 0866

