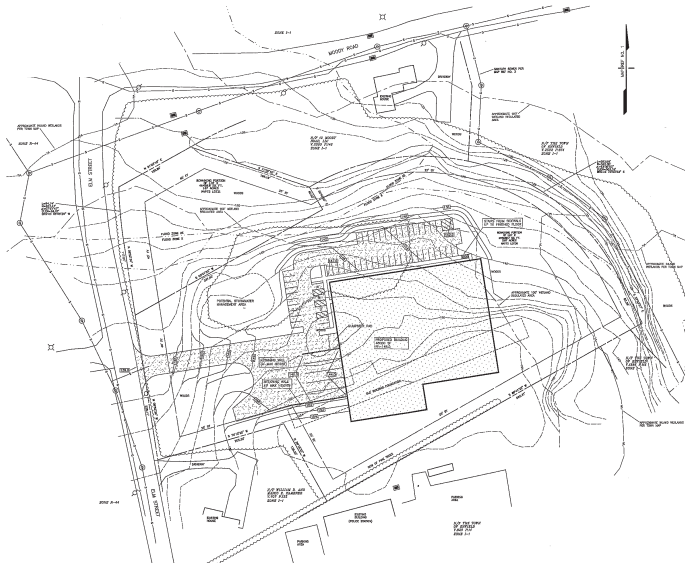


FOR SALE > LAND



Moody Rd & Elm St

ENFIELD, CT 06082



Moody Road & Elm Street > Land

Colliers International is pleased to present +/-8 acres for sale at the southeast corner of Moody Road and Elm Street in Enfield, Connecticut. This property could be a quasi-retail location. It is industrial zoned; an industrial building up to 48,000 square feet could be built on the site.

Building Amenities

- > +/-8 acre site for sale
- > 5 miles to I-91
- > 80% level; 20% wet
- > Industrial Zoning
- > Could be a quasi-retail location
- > 48,000 SF industrial building could be built
- > Sale Price: \$75,000 per usable acre

VIEW ONLINE

www.colliers.com/hartford

Contact Us

NICHOLAS MORIZIO, CRE, SIOR
860 616 4022
HARTFORD, CT
nicholas.morizio@colliers.com

KEITH KUMNICK, SIOR
860 616 4019
HARTFORD, CT
keith.kumnick@colliers.com

COLLIERS INTERNATIONAL
864 Wethersfield Avenue
Hartford, CT 06114
860 249 6521 Main
860 247 4067 Fax
www.colliers.com/hartford

Information contained herein has been obtained from the owners or from other sources deemed reliable. We have no reason to doubt its accuracy but regret we cannot guarantee it. All properties subject to change or withdrawal without notice.