

# CHESTER ROAD

Avon, OH 44011



## Commercial Land For Sale

### Property Highlights

- Available: 3 Acres (179' frontage x 807' depth) - adjacent 7 Acres also for sale
- Commercial Zoning: C-4 (General Business District)
- Interchange location: Northeast quadrant I-90 & S.R. 611 (Chester Road)
- Great highway visibility and traffic exposure (I-90: 62,000+ VPD)

| DEMOGRAPHICS             | 1 mile   | 3 mile   | 5 mile   |
|--------------------------|----------|----------|----------|
| Total Population         | 3,713    | 31,376   | 97,353   |
| Average Household Income | \$84,065 | \$92,285 | \$87,497 |
| Daytime Employees        | 2,524    | 19,442   | 36,908   |

MATT DAVIS  
+1 216 239 5115  
matt.davis@colliers.com

MICHAEL WEISS  
+1 216 239 5111  
michael.weiss@colliers.com

COLLIERS INTERNATIONAL  
200 Public Square | Suite 1200  
Cleveland, OH 44114  
216 239 5060  
[www.colliers.com/ohio](http://www.colliers.com/ohio)

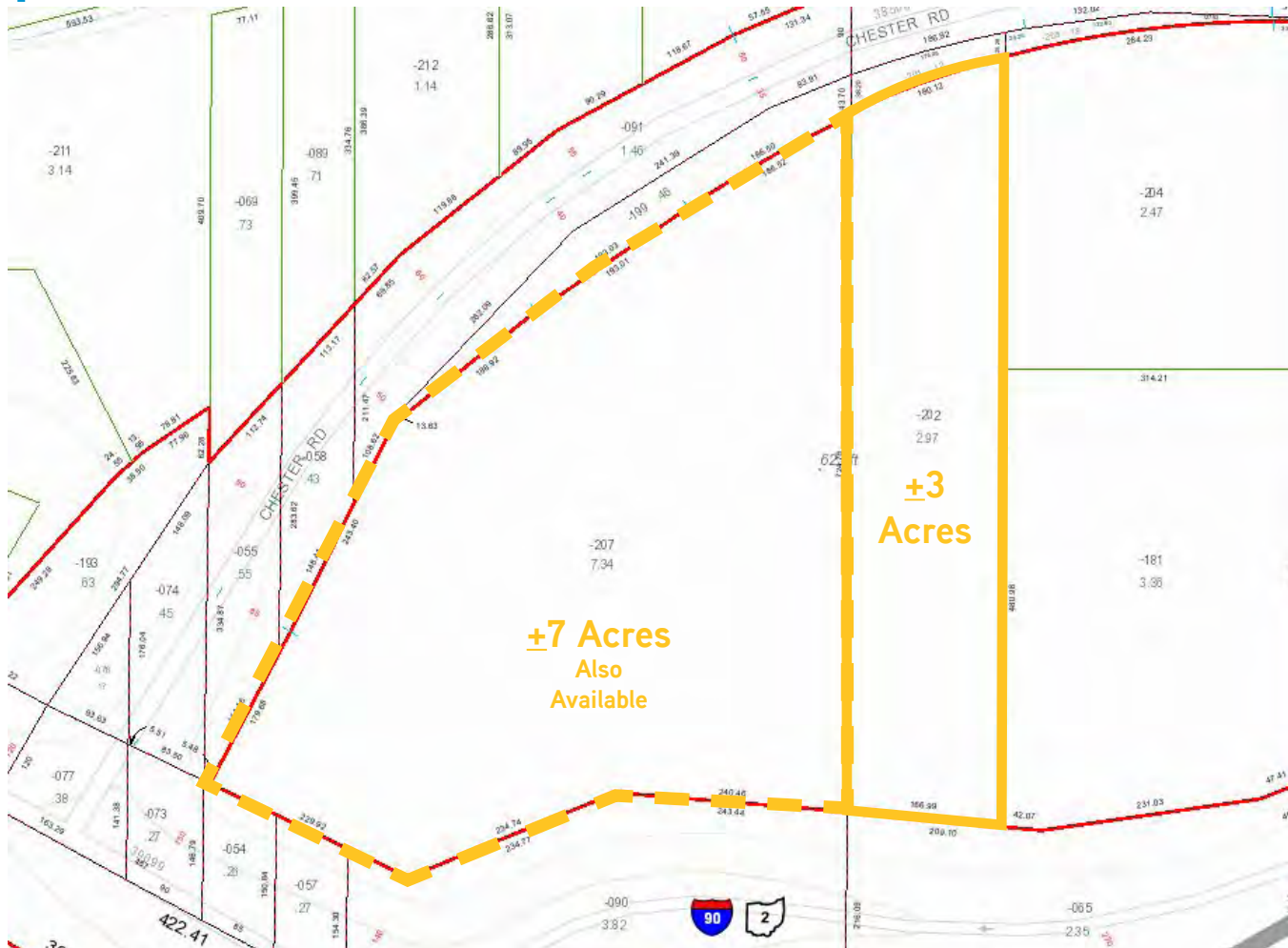
The information contained herein was obtained from sources believed reliable; however, Colliers International makes no guarantees, warranties, or representations as to the completeness or accuracy thereof. The presentation of this property is submitted subject to errors, omissions, change of price or conditions prior to sale or lease, or withdrawal without notice.

# CHESTER ROAD

Avon, OH 44011



## Parcel Map



MATT DAVIS  
+1 216 239 5115  
matt.davis@colliers.com

MICHAEL WEISS  
+1 216 239 5111  
michael.weiss@colliers.com

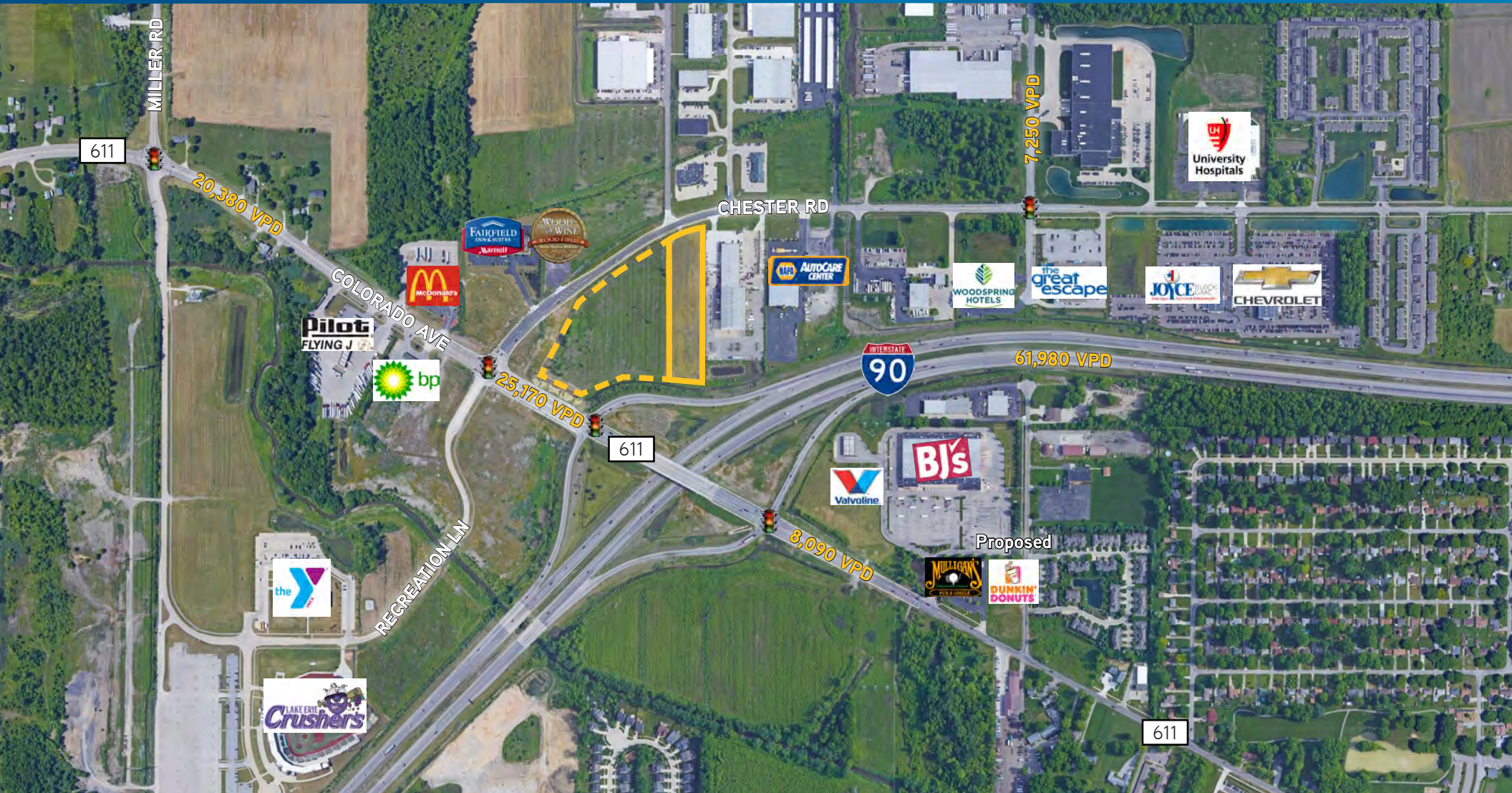
COLLIERS INTERNATIONAL  
200 Public Square | Suite 1200  
Cleveland, OH 44114  
216 239 5060  
[www.colliers.com/ohio](http://www.colliers.com/ohio)

The information contained herein was obtained from sources believed reliable; however, Colliers International makes no guarantees, warranties, or representations as to the completeness or accuracy thereof. The presentation of this property is submitted subject to errors, omissions, change of price or conditions prior to sale or lease, or withdrawal without notice.



# CHESTER ROAD

Avon, OH 44011



MATT DAVIS  
+1 216 239 5115  
matt.davis@colliers.com

MICHAEL WEISS  
+1 216 239 5111  
michael.weiss@colliers.com

COLLIERS INTERNATIONAL  
200 Public Square | Suite 1200  
Cleveland, OH 44114  
216 239 5060  
[www.colliers.com/ohio](http://www.colliers.com/ohio)

The information contained herein was obtained from sources believed reliable; however, Colliers International makes no guarantees, warranties, or representations as to the completeness or accuracy thereof. The presentation of this property is submitted subject to errors, omissions, change of price or conditions prior to sale or lease, or withdrawal without notice.



# CHESTER ROAD

Avon, OH 44011

Colliers  
INTERNATIONAL



MATT DAVIS  
+1 216 239 5115  
matt.davis@colliers.com

MICHAEL WEISS  
+1 216 239 5111  
michael.weiss@colliers.com

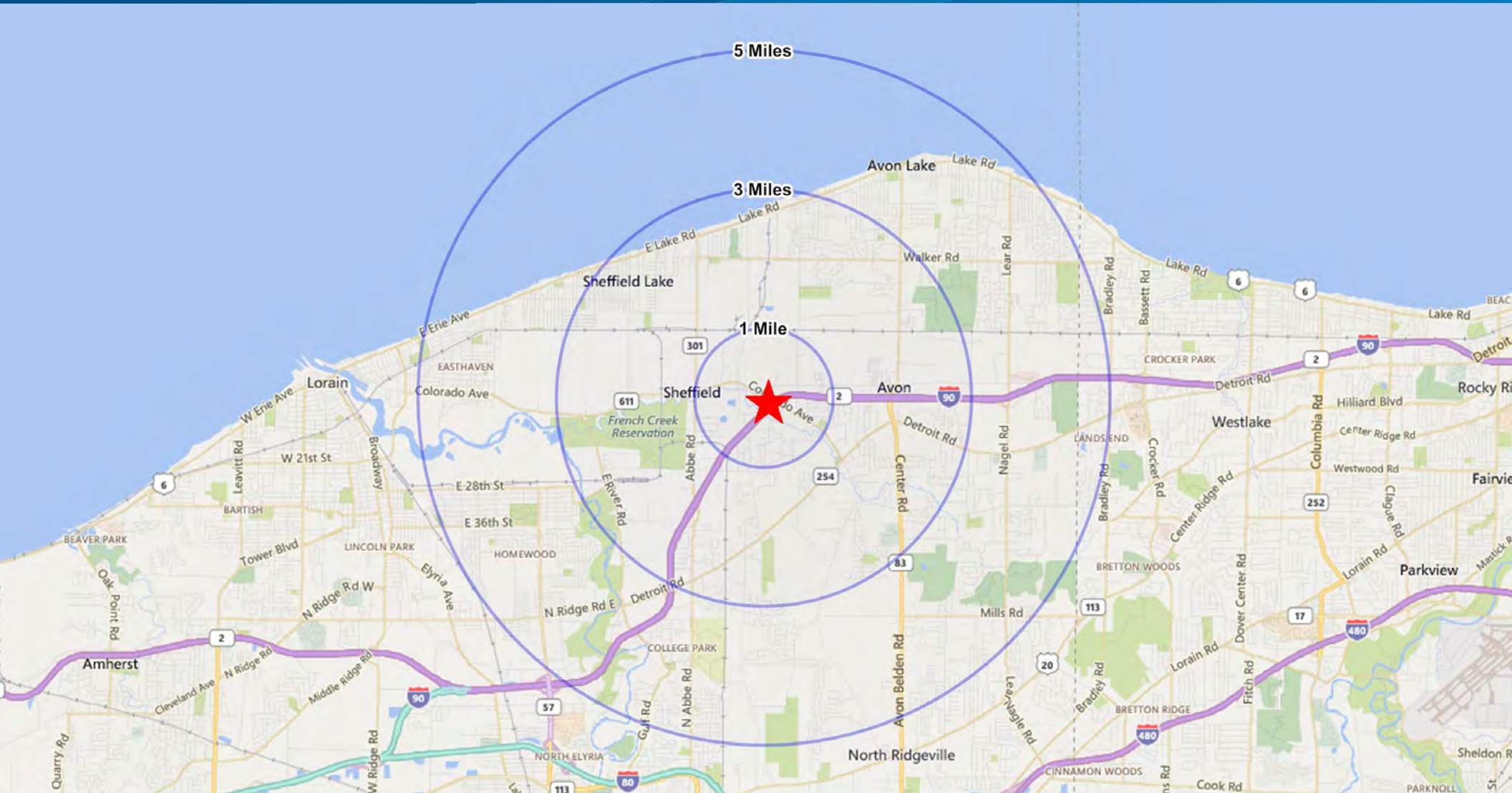
COLLIERS INTERNATIONAL  
200 Public Square | Suite 1200  
Cleveland, OH 44114  
216 239 5060  
[www.colliers.com/ohio](http://www.colliers.com/ohio)

The information contained herein was obtained from sources believed reliable; however, Colliers International makes no guarantees, warranties, or representations as to the completeness or accuracy thereof. The presentation of this property is submitted subject to errors, omissions, change of price or conditions prior to sale or lease, or withdrawal without notice.



# CHESTER ROAD &

Avon, OH 44011



MATT DAVIS  
+1 216 239 5115  
matt.davis@colliers.com

MICHAEL WEISS  
+1 216 239 5111  
michael.weiss@colliers.com

COLLIERS INTERNATIONAL  
200 Public Square | Suite 1200  
Cleveland, OH 44114  
216 239 5060  
[www.colliers.com/ohio](http://www.colliers.com/ohio)

The information contained herein was obtained from sources believed reliable; however, Colliers International makes no guarantees, warranties, or representations as to the completeness or accuracy thereof. The presentation of this property is submitted subject to errors, omissions, change of price or conditions prior to sale or lease, or withdrawal without notice.