

712

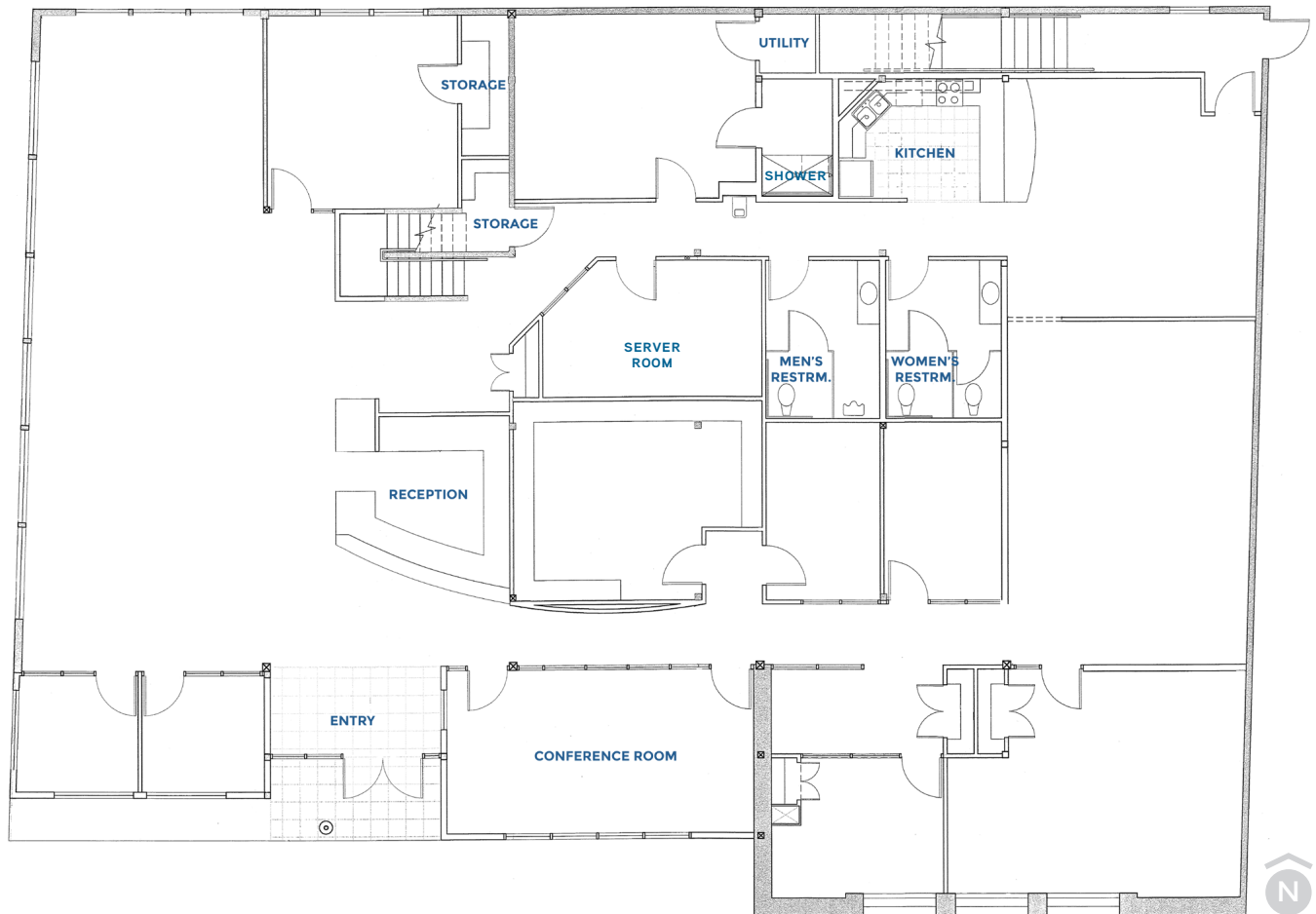
AURORA

8,860 RSF OFFICE SPACE AVAILABLE FOR LEASE

- 12+ month lease term (flexible)
- 8,860 SF of spacious office
- \$25.00/SF
- 21 free dedicated parking stalls
- Located in Seattle's South Lake Union Neighborhood
- Exclusive tenant deck
- On-site showers
- 15' ceiling height

712
AURORA

8,860 RSF OFFICE SPACE AVAILABLE FOR LEASE



FIRST FLOOR

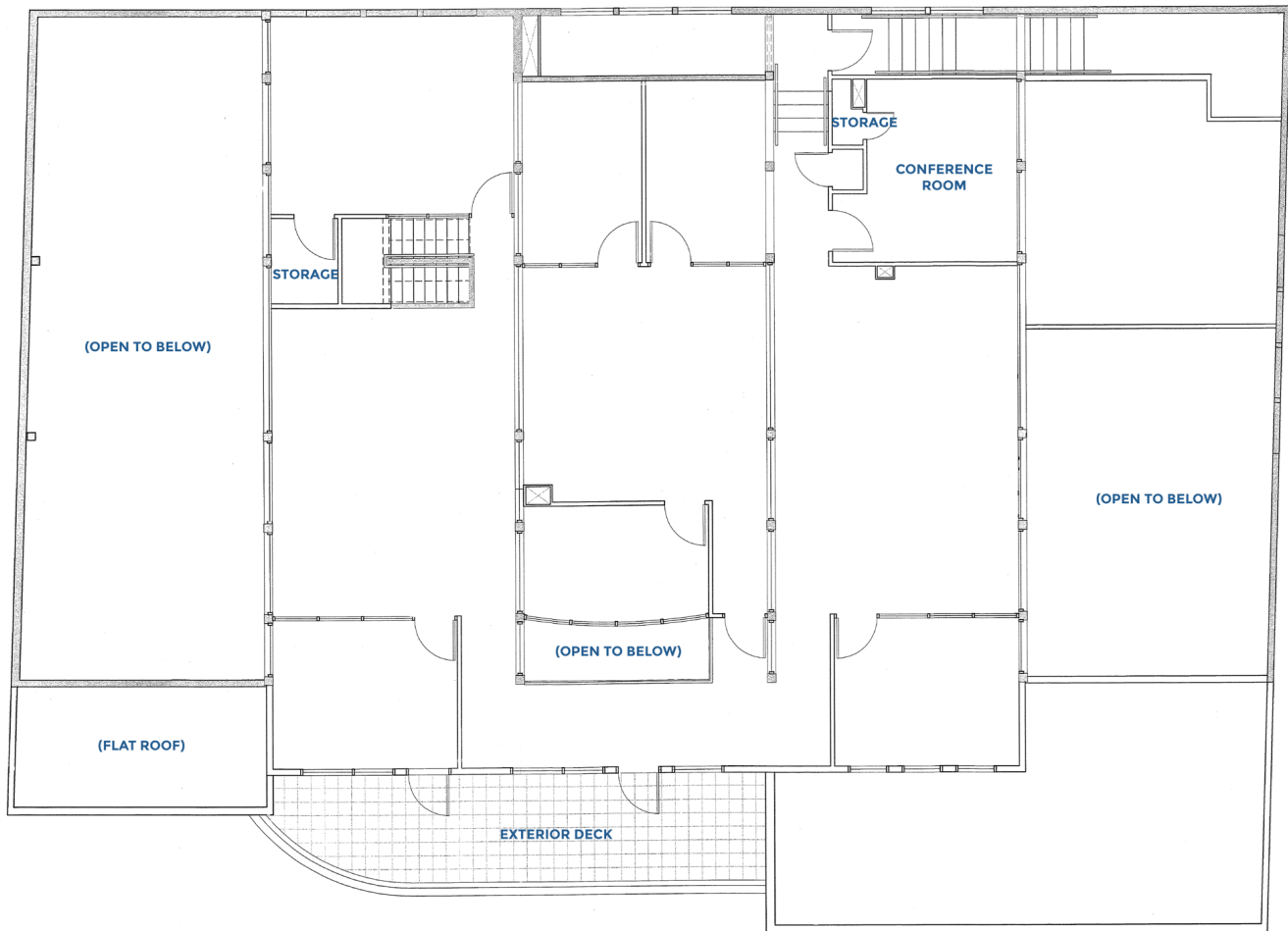


Connor McClain
206 624 7417
connor.mcclain@colliers.com



712
AURORA

8,860 RSF OFFICE SPACE AVAILABLE FOR LEASE



SECOND FLOOR



Connor McClain
206 624 7417
connor.mcclain@colliers.com



712
AURORA

8,860 RSF OFFICE SPACE AVAILABLE FOR LEASE



Connor McClain
206 624 7417
connor.mcclain@colliers.com



8,860 RSF OFFICE SPACE AVAILABLE FOR LEASE



NEIGHBORHOOD AMENITIES

- Within walking distance of various restaurants, coffee shops and fitness centers.
- Easy access to major freeways, the South Lake Union Streetcar, multiple bus lines and the 9th Avenue bike corridor.
- In close proximity to the new Amazon campus, future Google campus, Facebook, Gates Foundation, UW School of Medicine and Fred Hutchinson Cancer Research Center.
- 1.5 miles from downtown Seattle retail core.

- 1 Art Marble 21
- 2 Big Mario's Pizza
- 3 Blue Moon Burgers
- 4 Brave Horse Tavern
- 5 Buca di Beppo
- 6 Cactus South Lake Union
- 7 Caffè Torino
- 8 Caffè Vita
- 9 Cask & Trotter
- 10 Chandler's Crabhouse
- 11 Citizen Coffee
- 12 Crow
- 13 Daniel's Broiler
- 14 Domino's Pizza
- 15 Duke's Chowder House
- 16 El Chupacabra
- 17 Feierabend
- 18 Flying Fish
- 19 Great Nabob
- 20 Herkimer Coffee
- 21 Hurry Curry of Tokyo
- 22 Jimmy John's
- 23 Kakao
- 24 Kobito Sushi
- 25 Laredo's Grill
- 26 Local Public Eatery
- 27 Lunchbox Laboratory
- 28 Marinepolis Sushi Land
- 29 Mollusk
- 30 Naanz Kitchen + Bar
- 31 Novihos
- 32 Pagliacci Pizza
- 33 Pho Cyclo
- 34 Portage Bay Cafe
- 35 re:public restaurant
- 36 Rigoletto
- 37 Royal Palace Bar and Grill
- 38 Row House Cafe
- 39 Seattle Grind
- 40 Serious Pie & Biscuit
- 41 Specialty's Cafe & Bakery
- 42 Starbucks
- 43 Taco Del Mar
- 44 Teriyaki Bowl
- 45 Top Pot Doughnuts
- 46 Uptown Espresso
- 47 Veggie Grill
- 48 Victory Lounge

8,860 RSF OFFICE SPACE AVAILABLE FOR LEASE

712
AURORA



CONVENIENTLY LOCATED in Seattle's South Lake Union neighborhood, 712 Aurora is within walking distance of a number of trendy restaurants, coffee shops, fitness centers, outdoor recreation areas and is just blocks away from Lake Union. This ideal location offers easy access to major freeways, the South Lake Union Streetcar, multiple bus lines and the 9th Avenue bike corridor. Neighboring the new Amazon and future Google campuses, tenants of 712 Aurora will work among thriving technology and business leaders.

Connor McClain
206 624 7417
connor.mcclain@colliers.com

