

# Prologis Savannah Logistics Center

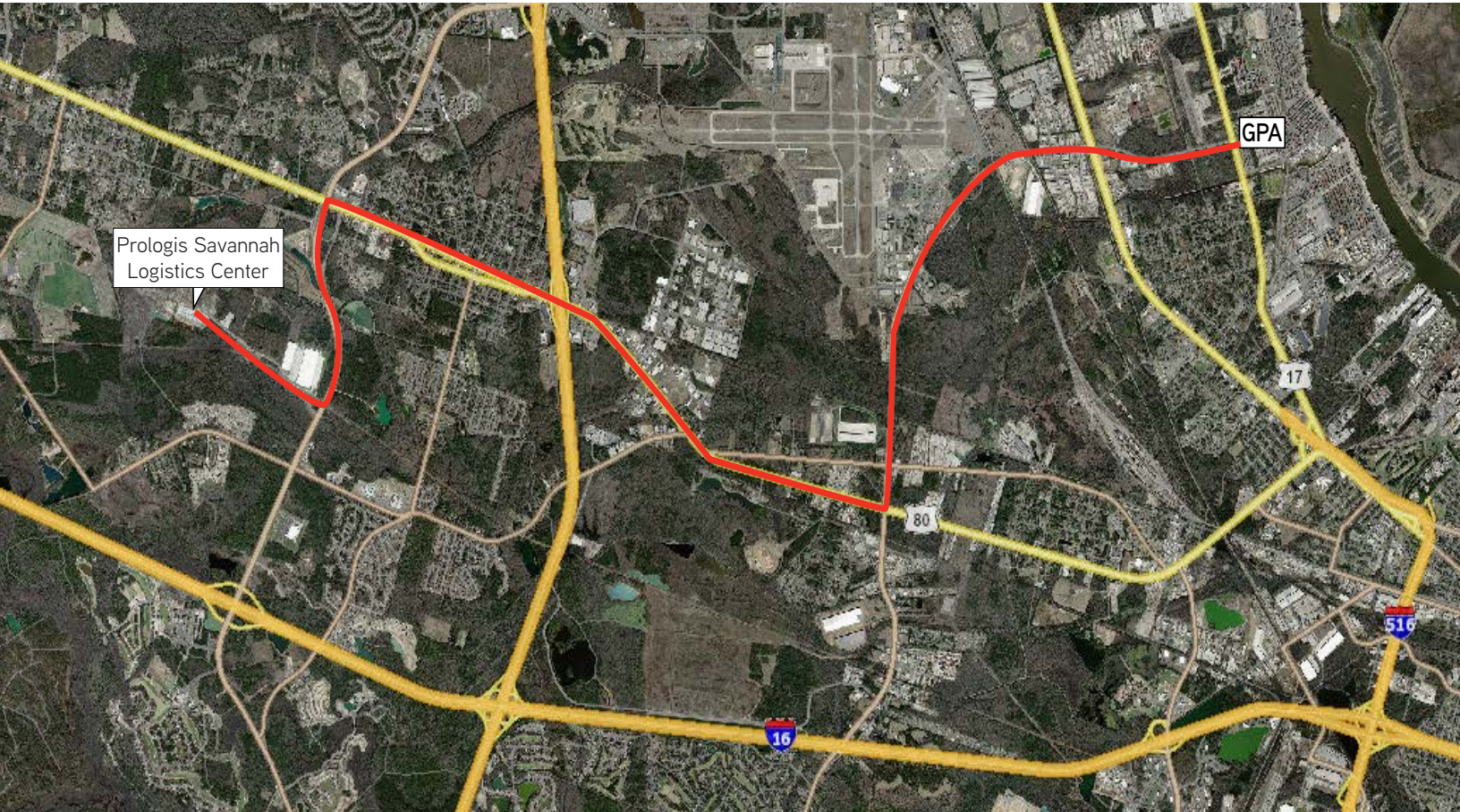
S.H. Morgan Parkway

Savannah, GA



**PROLOGIS**®

**±4.45 Acre Container/Trailer Yard For Lease**



## Location

- 10.7 miles from the Georgia Ports Authority's main gate
- 2.4 miles from I-16 and 4.3 miles from I-95

## Facility

- 4.45 acres, cleared and leveled
- Graveled
- Utilities for office trailer (trailer not provided)

## Rate

- \$2,000/acre/month

### Prologis

Kent Mason, SIOR, CCIM  
Vice President - Market Officer, Georgia  
kmason@prologis.com  
404.760.7208 Phone  
678.249.7001 Cell

### Colliers International

David Sink, SIOR  
Principal Broker  
david.sink@colliers.com  
912.662.8010 Phone  
912.596.2871 Cell





# Prologis Savannah Logistics Center

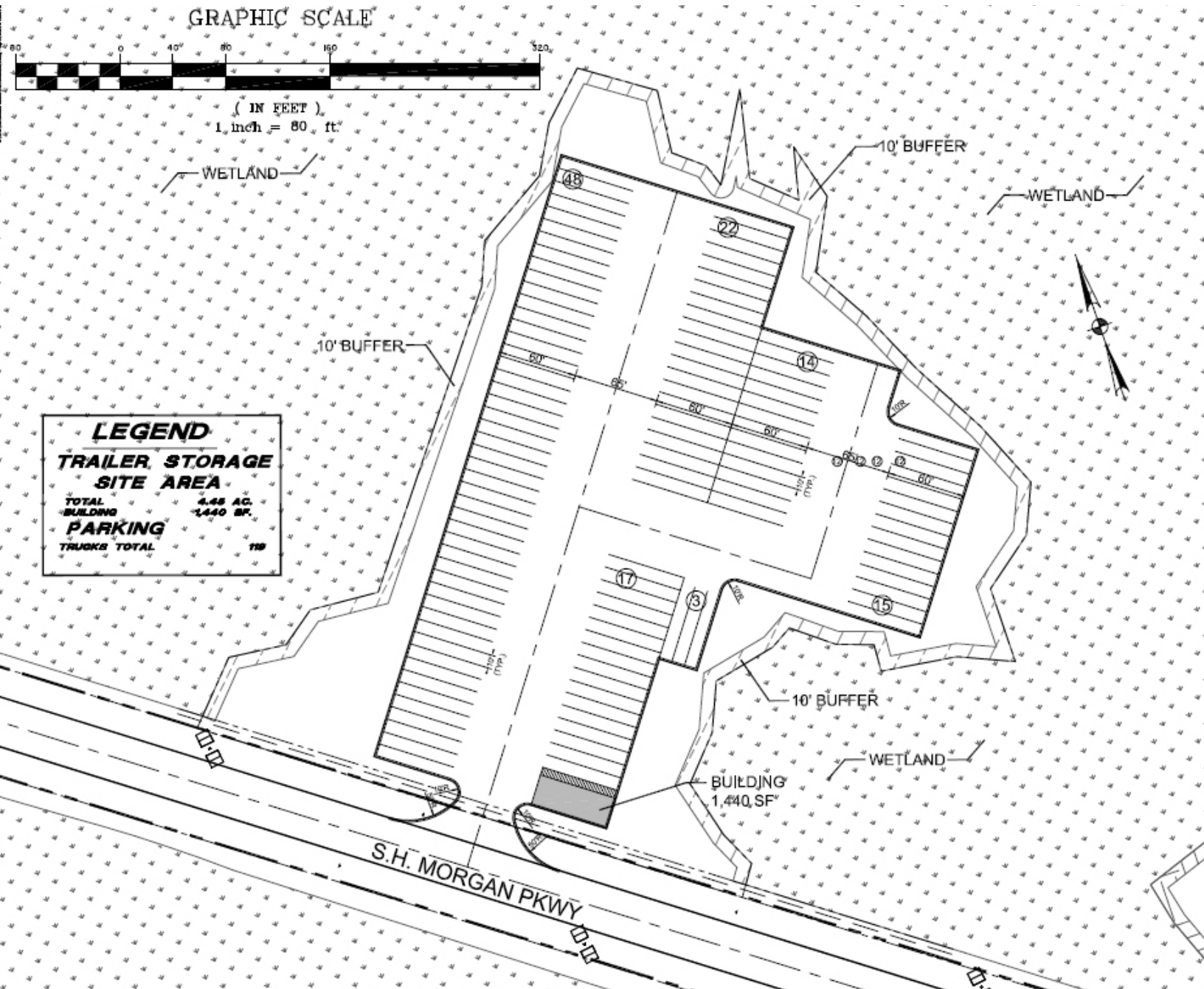
S.H. Morgan Parkway

Savannah, GA



**PROLOGIS**

**±4.45 Acre Container/Trailer Yard For Lease**



## Prologis

Kent Mason, SIOR, CCIM  
Vice President - Market Officer, Georgia  
kmason@prologis.com  
404.760.7208 Phone  
678.249.7001 Cell

## Colliers International

David Sink, SIOR  
Principal Broker  
david.sink@colliers.com  
912.662.8010 Phone  
912.596.2871 Cell

