

FOR SALE > RETAIL

2.38± AC Parcel for Sale

900 E. MAIN STREET, LAKE BUTLER, FL 32054

Colliers
INTERNATIONAL



Property Features

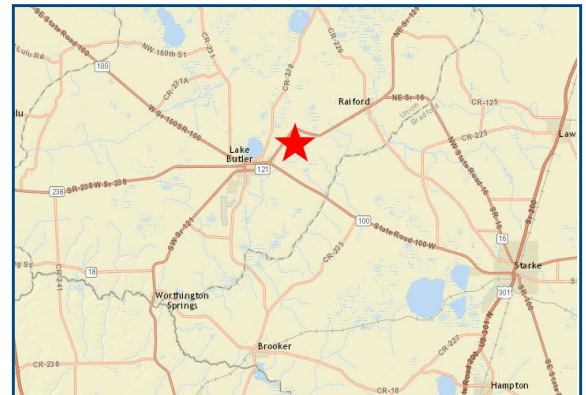
- > Land available: 2.38± acres
- > Zoning: CG commercial general
- > Located at the intersection of the markets main thoroughfares (SR100/SR 121/East Main Street)
- > Multiple points of ingress/egress, cross access with CVS
- > Located near the main residential population
- > Traffic Counts: 6,700 AADT on E. Main St.
6,600 AADT on NE SR 121

Sale price \$295,000

Demographics

	3-Mile	5-Mile	10-Mile
Total Population	22,233	29,787	43,841
Total Households	8,263	10,963	16,121
Average HH Income	\$42,421	\$44,918	\$48,767

Location Map



Contact Us

SCOTT CORBIN

Executive Managing Director, Retail Services

+ 1 407 362 6164

scott.corbin@colliers.com

COLLIERS INTERNATIONAL

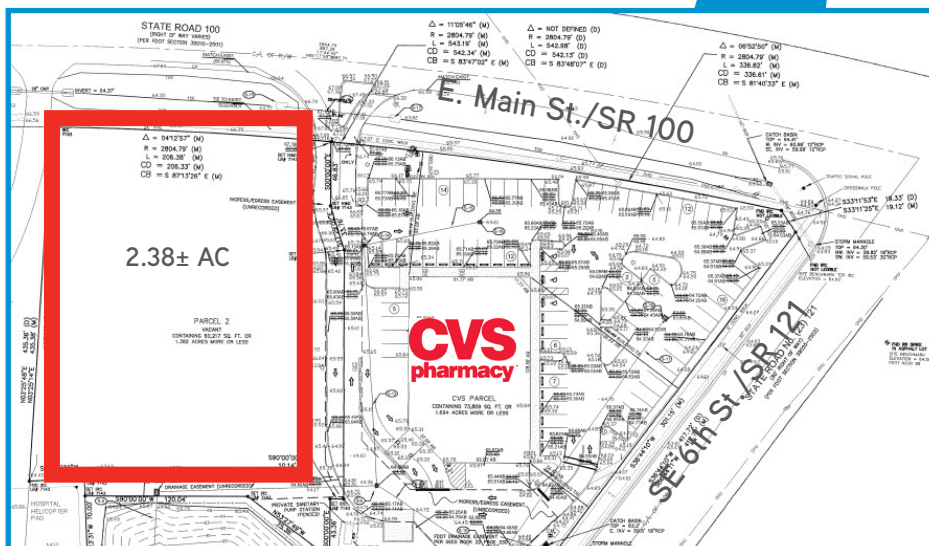
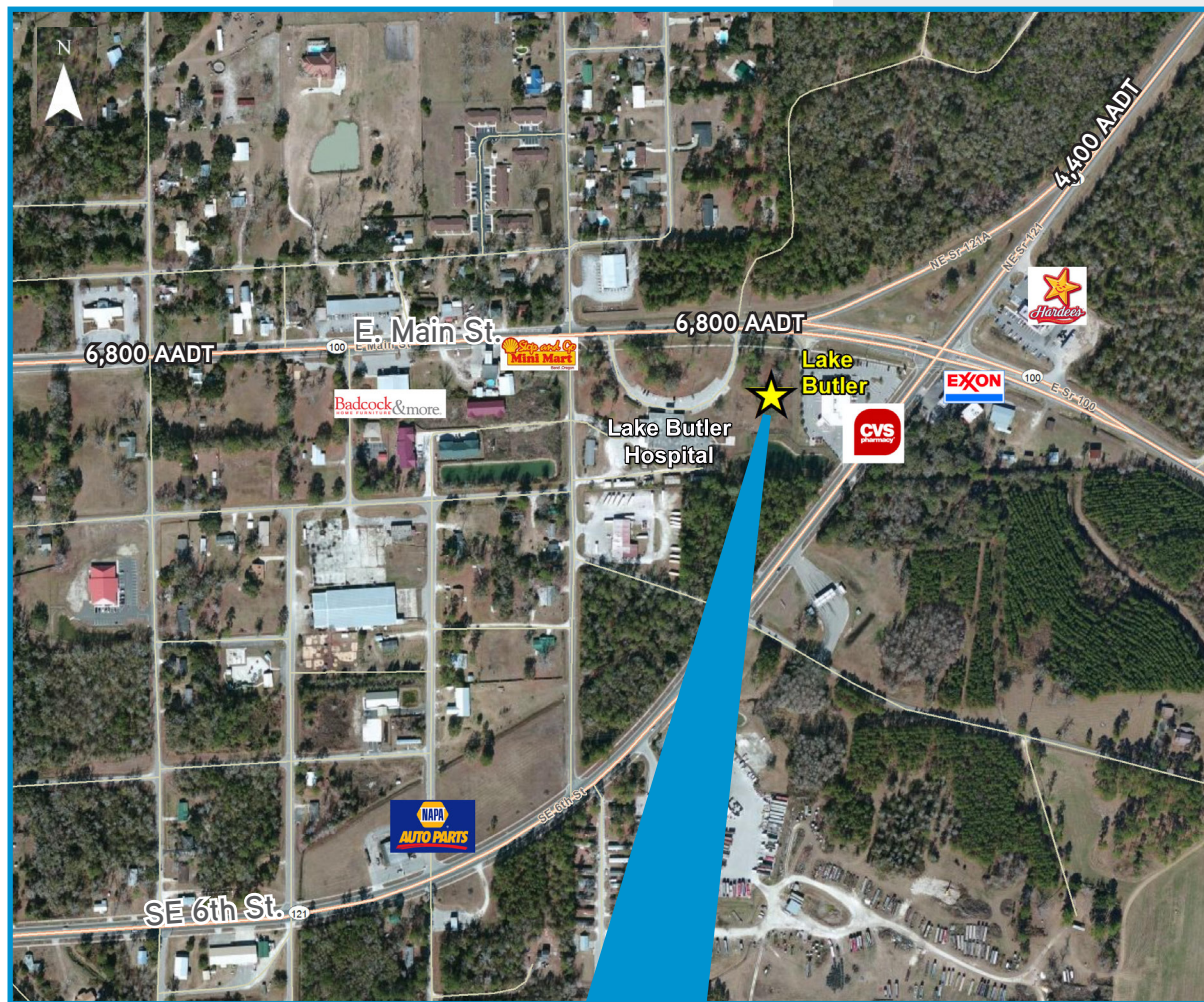
255 S. Orange Avenue Suite 1300

Orlando, FL 32801

www.colliers.com

Colliers
INTERNATIONAL

Market Aerial



Contact Us

SCOTT CORBIN
Executive Managing Director, Retail Services
+ 1 407 362 6164
scott.corbin@colliers.com

COLLIERS INTERNATIONAL
255 S. Orange Avenue Suite 1300
Orlando, FL 32801
www.colliers.com