

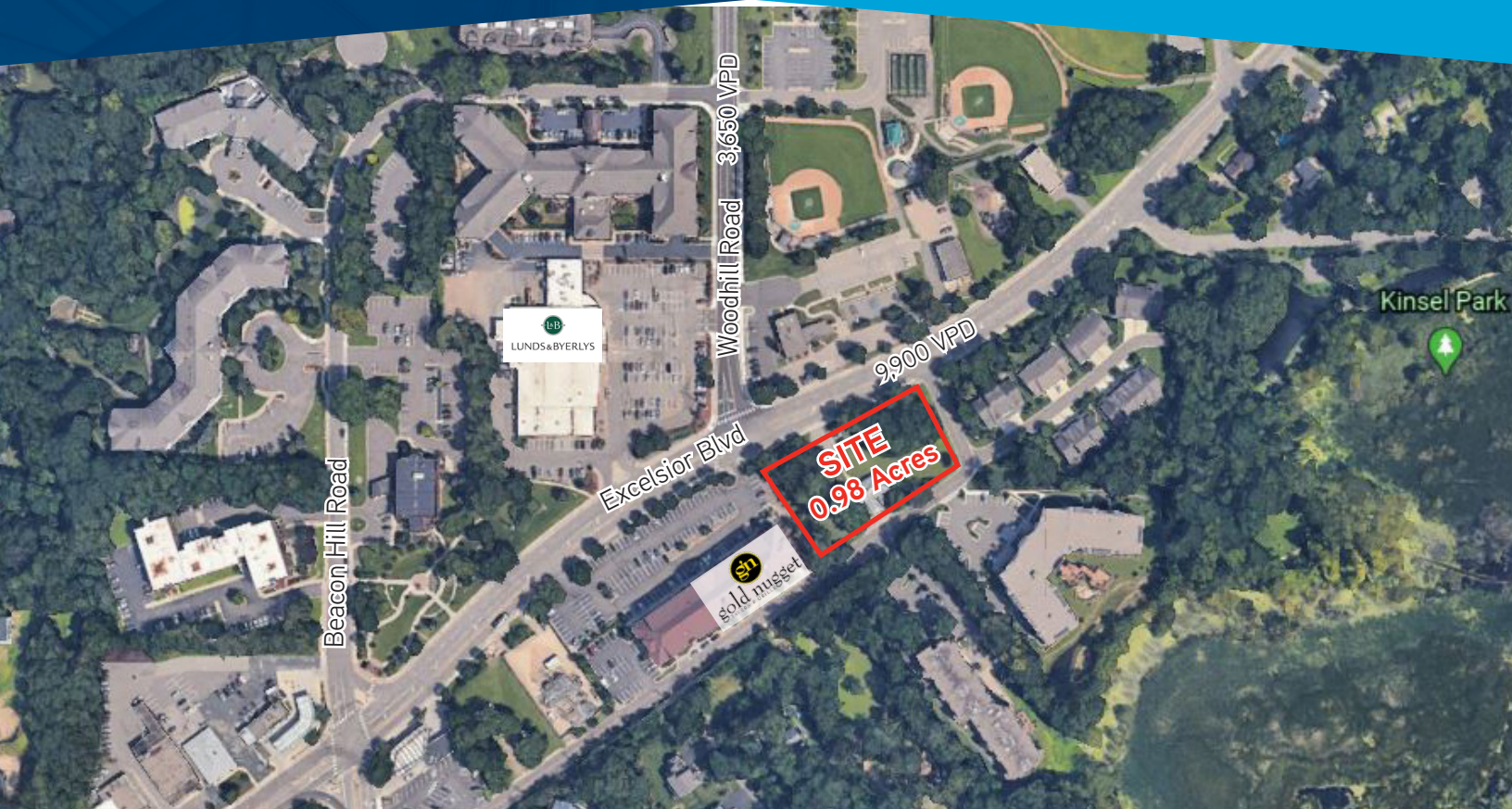
REDEVELOPMENT LAND FOR SALE >

# Minnetonka Land - 0.98 Acres

14317 Excelsior Blvd | Minnetonka, MN

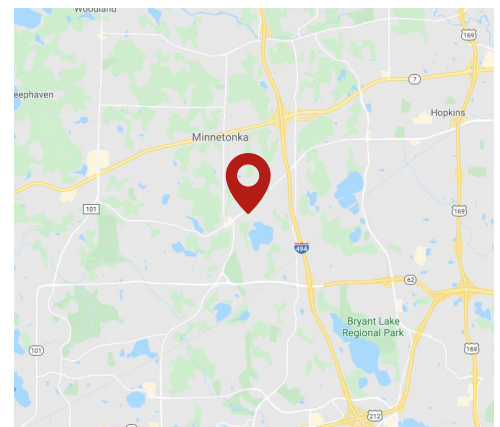


Accelerating success.



## PROPERTY HIGHLIGHTS

- > Premiere redevelopment opportunity
- > Approximately 0.98 acres
- > Mixed use; Ideal for multi-family, and retail
- > Great location along Excelsior Blvd
- > Adjacent to Lunds & Byerly's
- > Estimated population growth 2020-2025 4.28% in 1 mile



## CONTACT US >

Laura Moore  
952 212 2788  
[laura.moore@colliers.com](mailto:laura.moore@colliers.com)



# MINNETONKA LAND - 0.98 ACRES > FOR SALE

## SITE INFORMATION:

- > **Location:** SE Excelsior Blvd & Woodhill Road | Minnetonka, MN 55345
- > **Description:** Approximately 0.98 acres
- > **Zoning:** Mixed use; Ideal for multi-family
- > **PID:** 27-117-22-33-0034

## DEMOGRAPHICS: 1 MILE 3 MILES 5 MILES

	1 MILE	3 MILES	5 MILES
Population	5,800	59,033	160,439
Median HH Income	\$113,567	\$93,300	\$97,986
Average HH Income	\$151,153	\$126,779	\$136,980

*\*Source: ACS, Esri, U.S. Census*

## TRAFFIC COUNTS:

- > Excelsior Blvd: 9,900 vpd
- > Williston & Excelsior Blvd: 10,500 vpd

*\*Source: Minnesota Department of Transportation 2018 Study averages are per day total cars*

## 2020 EST RE TAX:

\$5,177.10

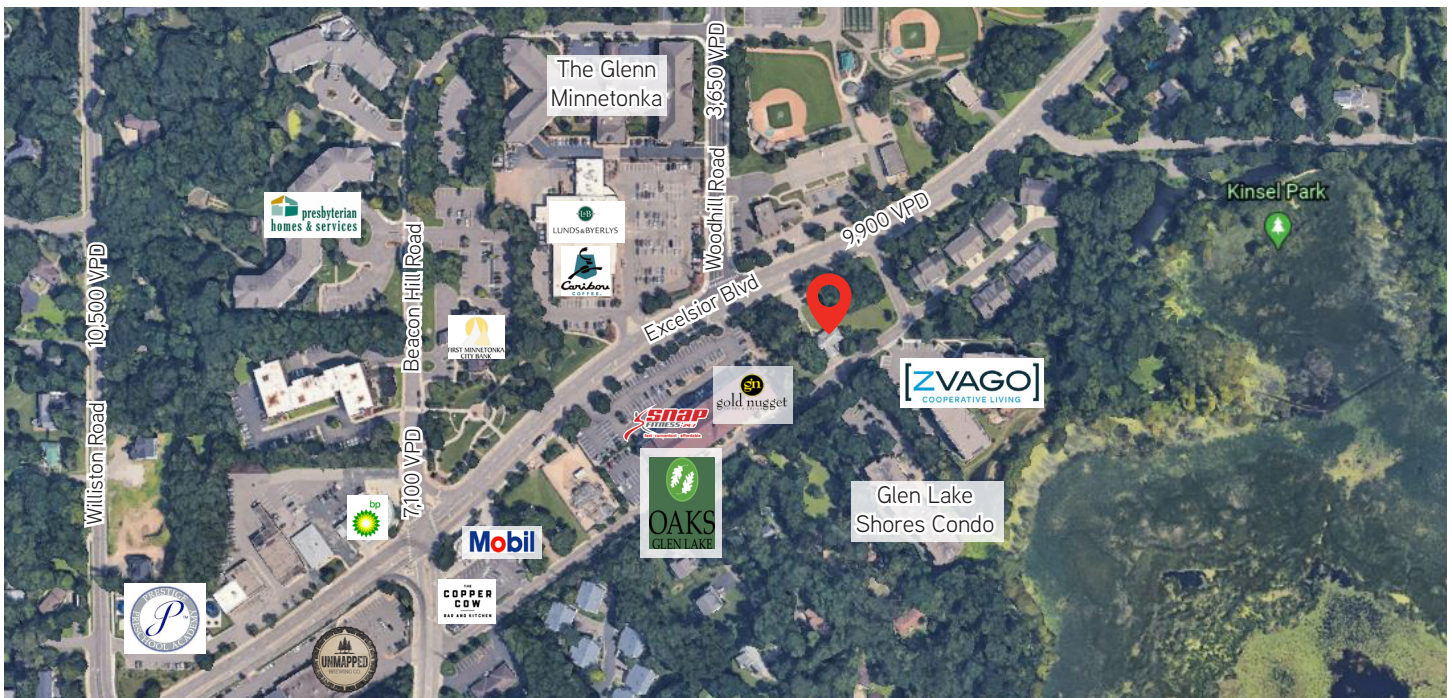
## SALE PRICE:

Negotiable

## CONTACT US >

Laura Moore  
952 897 7715  
[laura.moore@colliers.com](mailto:laura.moore@colliers.com)

## AERIAL



Accelerating success.