

FOR LEASE > OFFICE/WAREHOUSE SPACE



# Willows NW Business Park

14939-14963 NE 95TH STREET, REDMOND, WA 98052



## Available Space: East Building

- > Suite 14955: 1,885 SF Total
  - Office - 1,355 SF
  - Warehouse - 530 SF
- > Available immediately

## Features

- > Open office space plus one private office
- > 10' x 10' overhead door in warehouse
- > In-suite restrooms

## Rates

- > Office - \$1.60/SF/Month, NNN
- > Warehouse - \$0.80/SF/Month, NNN
- > 2017 NNN's = \$0.325/SF/Month

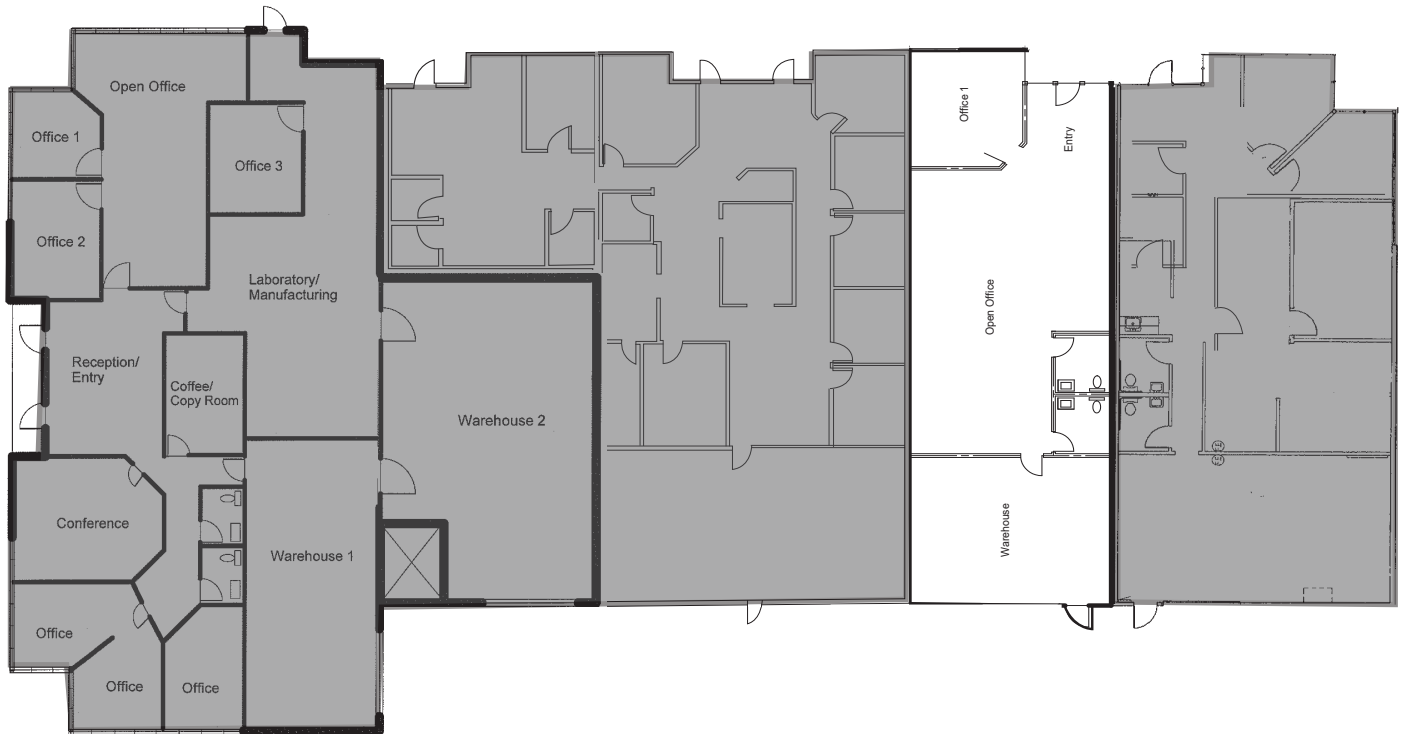


DEREK HEED  
425 453 3133  
BELLEVUE, WA  
derek.heed@colliers.com

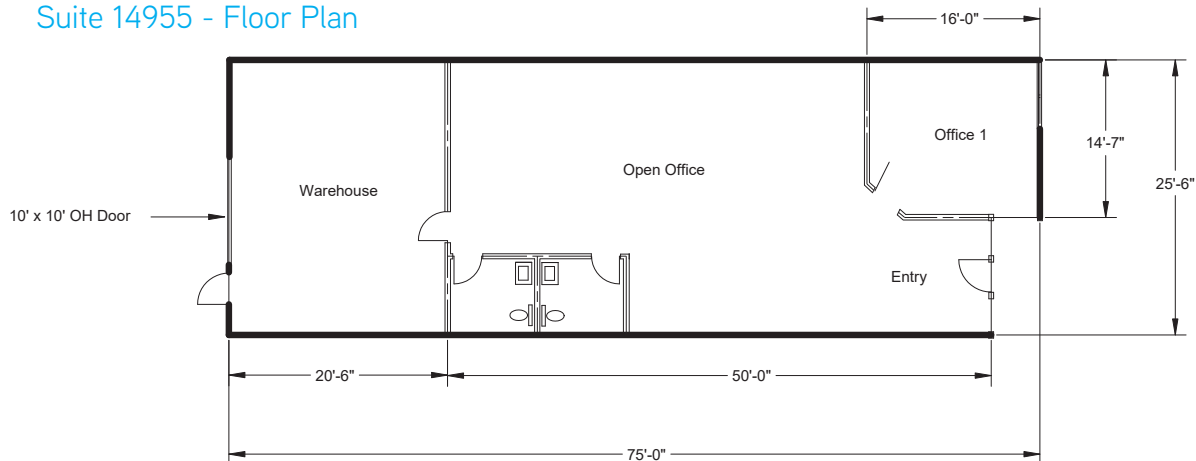
COLLIERS INTERNATIONAL  
11225 SE 6th Street, Suite 240  
Bellevue, WA 9 8004  
www.colliers.com

FOR LEASE > OFFICE/WAREHOUSE SPACE

# Willows NW Business Park - East Building



Suite 14955 - Floor Plan



DEREK HEED  
425 453 3133  
BELLEVUE, WA  
[derek.heed@colliers.com](mailto:derek.heed@colliers.com)

COLLIERS INTERNATIONAL  
11225 SE 6th Street, Suite 240  
Bellevue, WA 98004  
[www.colliers.com](http://www.colliers.com)

This document has been prepared by Colliers International for advertising and general information only. Colliers International makes no guarantees, representations or warranties of any kind, expressed or implied, regarding the information including, but not limited to, warranties of content, accuracy and reliability. Any interested party should undertake their own inquiries as to the accuracy of the information. Colliers International excludes unequivocally all inferred or implied terms, conditions and warranties arising out of this document and excludes all liability for loss and damages arising there from. This publication is the copyrighted property of Colliers International and /or its licensor(s). © 2017. All rights reserved.

