



For Lease

Jefferson Building

8100 Three Chopt Rd, Richmond, VA

- Two-story 60,000 SF building
- Available suites:
 - Suite 209 - 1,989 RSF (available 3/1/26)
- Shared conference room
- Aggressive rates and tenant improvement allowances
- Ample parking: 5/1,000 SF
- Located in Forest Office Park
- Located near Henrico Doctor's Hospital with many retail amenities nearby
- Easy access to I-64 and to the GRTC Transit System
- Great West End location, conveniently located at the corner of Three Chopt Road and Forest Avenue

Contact us:

Gray Bryant

Senior Associate

+1 804 237 8087

gray.bryant@colliers.com

John Carpin

Senior Vice President

+1 804 267 7216

john.carpin@colliers.com

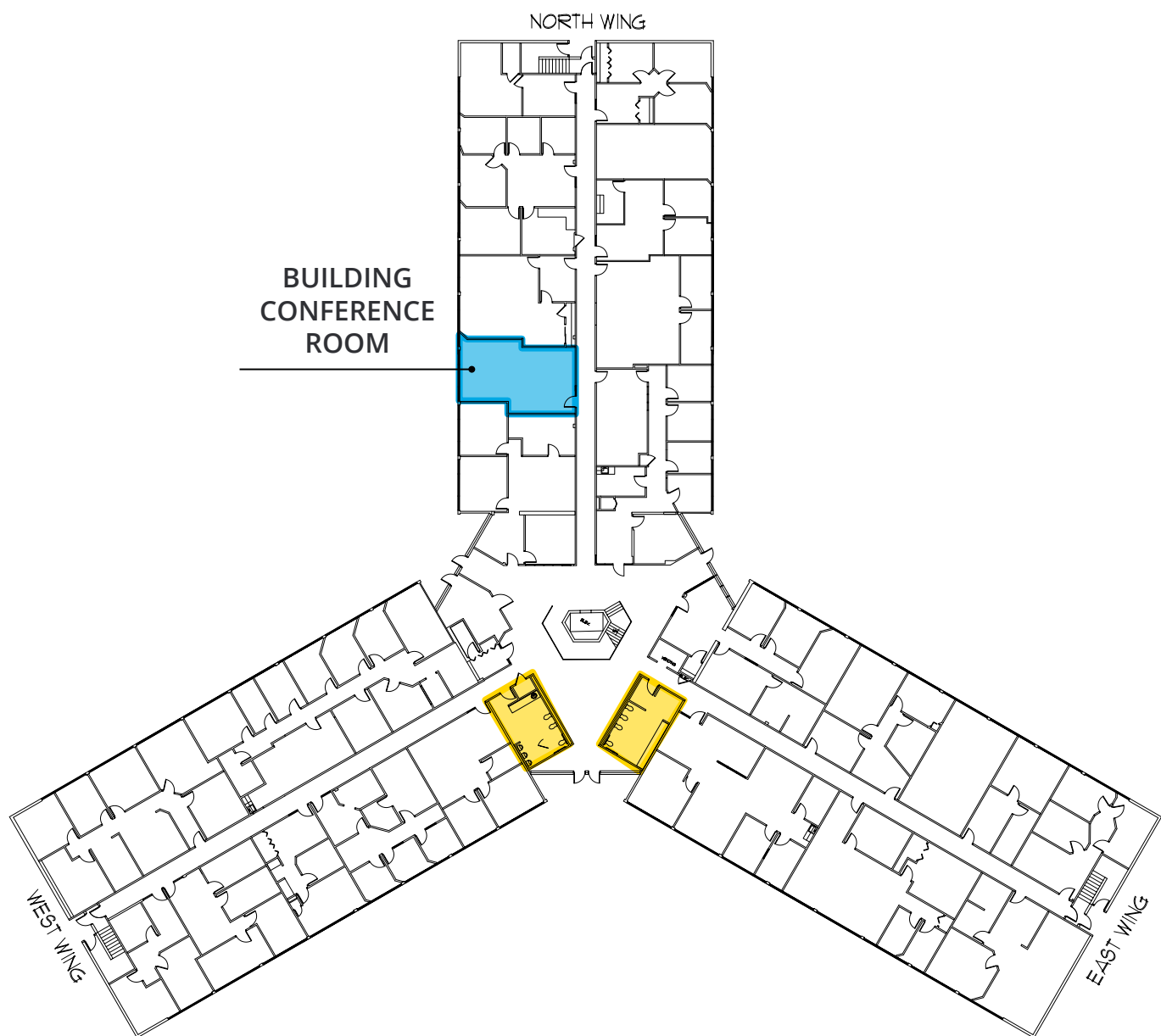
Colliers International

2221 Edward Holland Dr

Suite 600 | Richmond, VA

P: +1 804 320 5500

First Floor



Contact us:

Gray Bryant

Senior Associate

+1 804 237 8087

gray.bryant@colliers.com

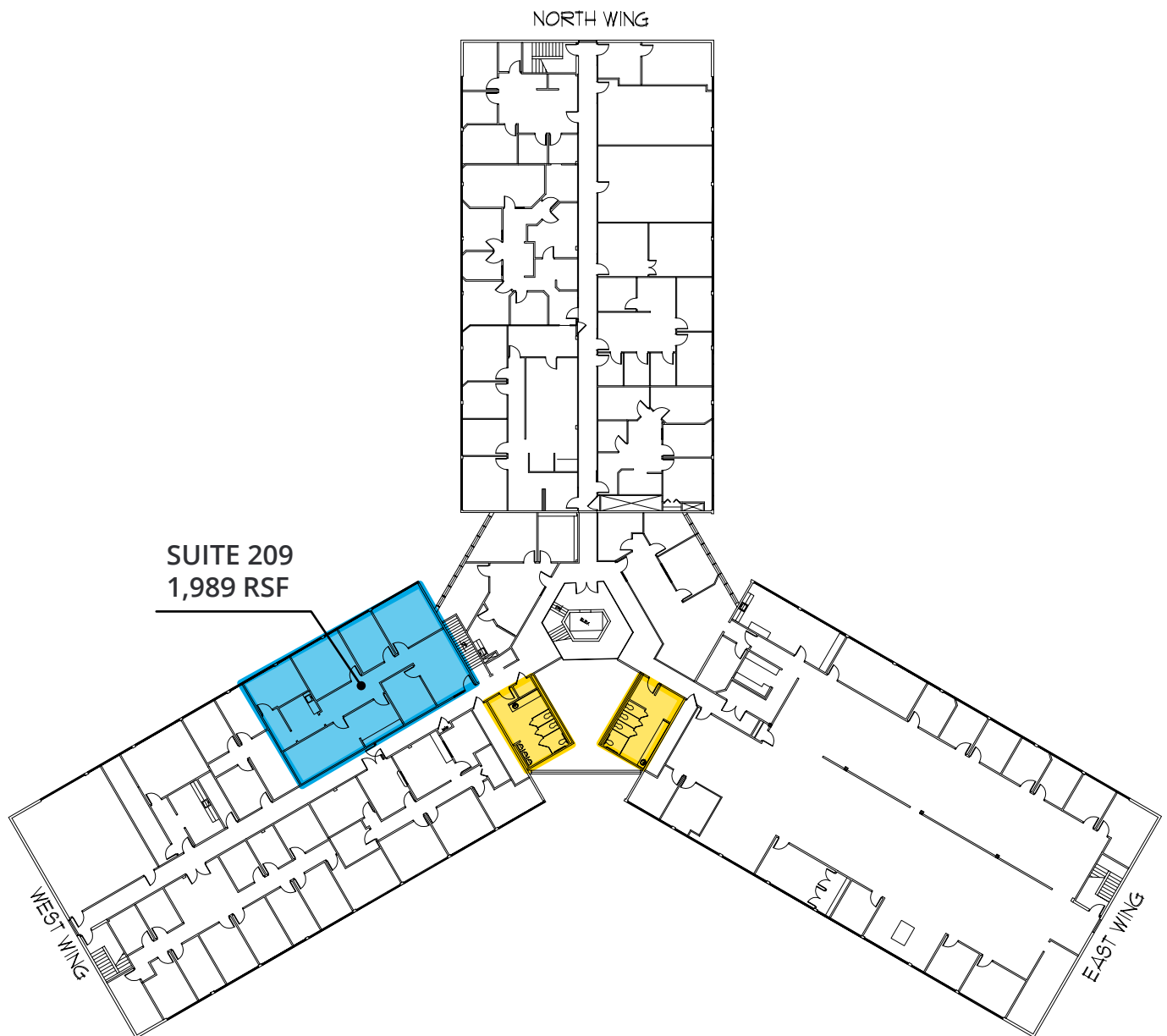
John Carpin

Senior Vice President

+1 804 267 7216

john.carpin@colliers.com

Second Floor



Contact us:

Gray Bryant

Senior Associate

+1 804 237 8087

gray.bryant@colliers.com

John Carpin

Senior Vice President

+1 804 267 7216

john.carpin@colliers.com

Jefferson Building



Contact us:

Gray Bryant

Senior Associate

+1 804 237 8087

gray.bryant@colliers.com

John Carpin

Senior Vice President

+1 804 267 7216

john.carpin@colliers.com

Jefferson Building



Contact us:

Gray Bryant

Senior Associate

+1 804 237 8087

gray.bryant@colliers.com

John Carpin

Senior Vice President

+1 804 267 7216

john.carpin@colliers.com

Colliers International

2221 Edward Holland Dr
Suite 600 | Richmond, VA

P: +1 804 320 5500