

FOR LEASE >

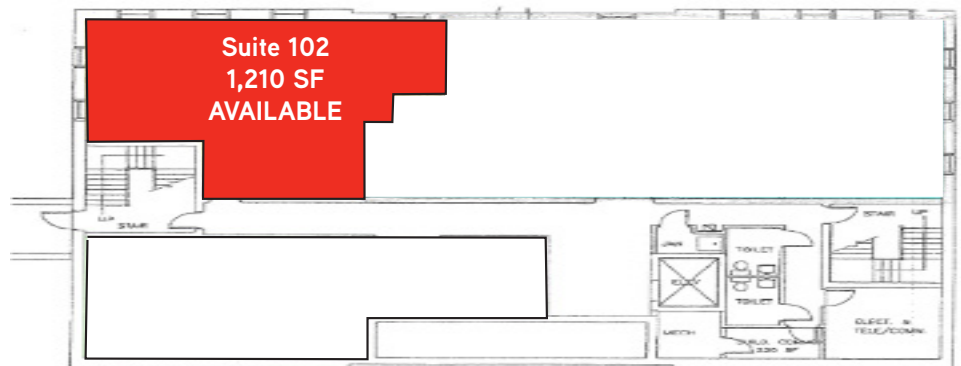
5012 Monument Ave | Richmond, VA 23230



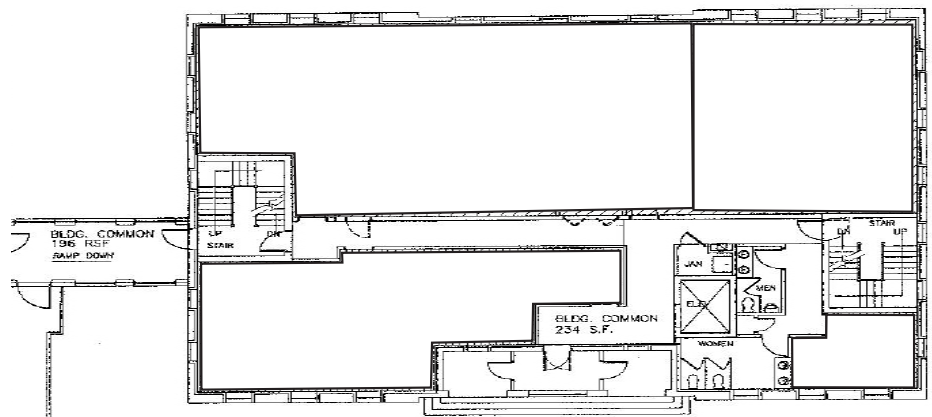
PROPERTY FEATURES

- > 1,210 SF available
- > Elevator served
- > Established business area
- > On-site parking
- > Conveniently located in the near West End near corner of Monument Ave and Willow Lawn Dr.

FIRST FLOOR



SECOND FLOOR



CONTACT

Scott White **SIR**, CCIM
Senior Vice President
+1 804 591 2416
scott.white@colliers.com



COLLIERS INTERNATIONAL
7200 Glen Forest Drive | Suite 200
Richmond, VA 23226
www.colliers.com/richmond

Accelerating success.

FOR LEASE >

5012 Monument Ave | Richmond, VA 23230

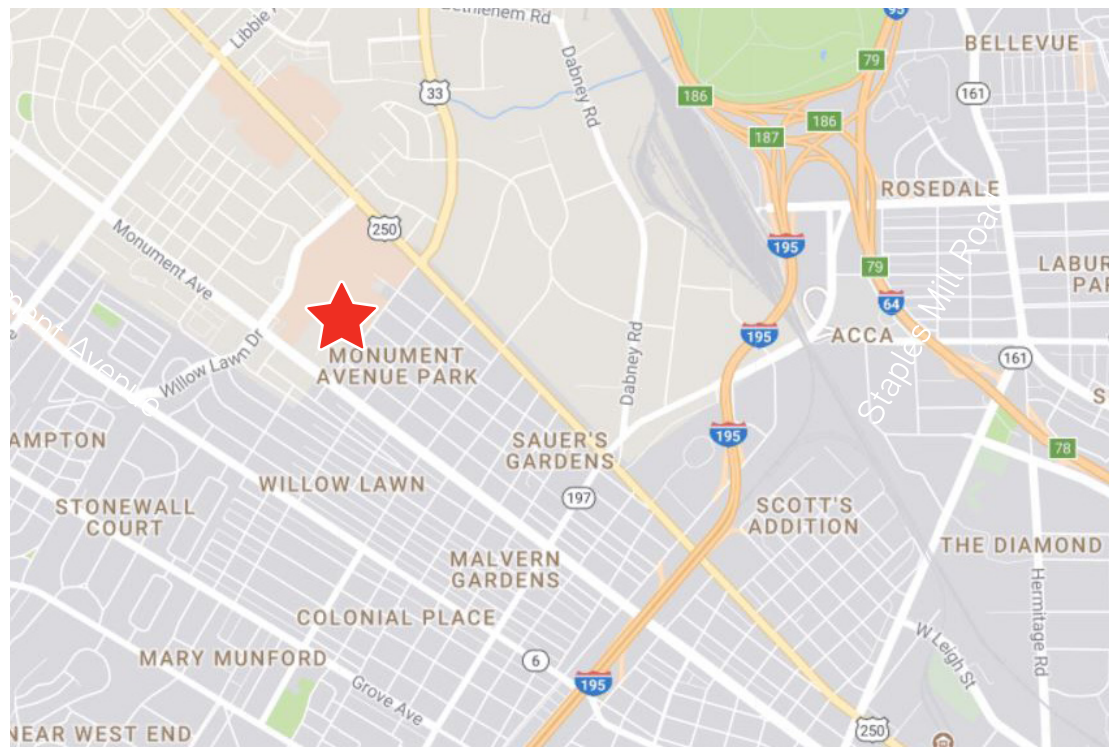


CONTACT

Scott White SIOR, CCIM
Senior Vice President
+1 804 591 2416
scott.white@colliers.com



COLLIERS INTERNATIONAL
7200 Glen Forest Drive | Suite 200
Richmond, VA 23226
www.colliers.com/richmond



The information contained herein was obtained from sources, believed reliable, however, Colliers International makes no guarantees, warranties or representations as to the completeness or accuracy thereof. The presentation of this property is submitted subject to errors, omissions, change of price or conditions prior to sale or lease, or withdrawal without notice. Filename: MonumentAve_5012_Lease rev 3-2-2018