

FOR LEASE ■ INDUSTRIAL BUILDING WITH YARD

±9,800 SF Divisible

985 PARKER COURT, SANTA CLARA, CA



Project Highlights

- ±2,200 SF Office
- (4) Grade Level Doors
- 800 Amps
- 120/240 Volts
- Light Industrial Zoning
- Skylights
- Space Heat
- Divisible
- Available Now/Call to Show
- Asking \$1.05/SF Gross



DAVE EVANS

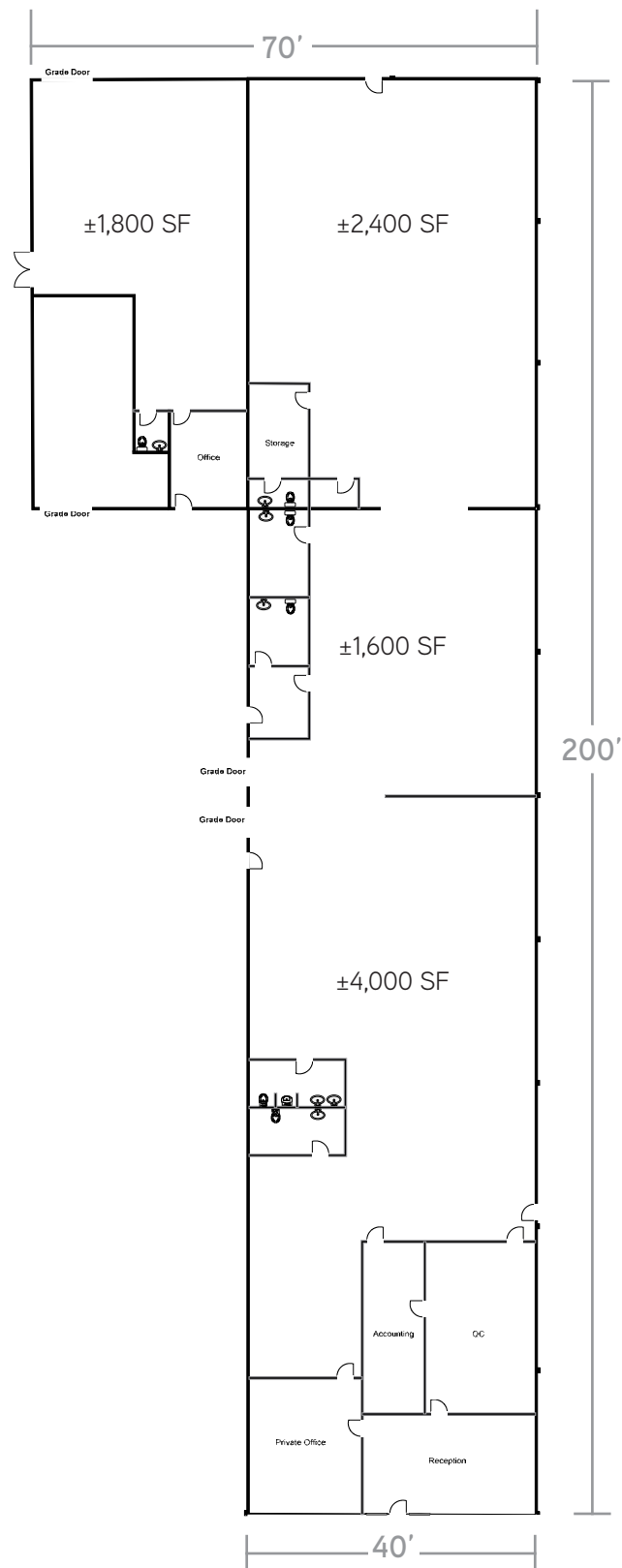
Senior Vice President
+1 408 282 3825
david.evans@colliers.com
CA License No. 00764837

GREG EVANS

Associate
+1 408 282 3825
greg.evans@colliers.com
CA License No. 01956927

COLLIERS INTERNATIONAL
450 West Santa Clara Street
San Jose, CA 95113
+1 408 282 3800 Main
+1 408 292 8100 Fax
www.colliers.com

985 Parker Court, Santa Clara ■ Floorplan



Drawings not exact/not to scale. The information furnished has been obtained from sources we deem reliable and is submitted subject to errors, omissions and changes. Although Colliers International has no reason to doubt its accuracy, we do not guarantee it. All information should be verified by the recipient prior to lease, purchase, exchange, or execution of legal documents. © 2018 Colliers International



985 Parker Court, Santa Clara ■ Aerial



Drawings not exact/not to scale. The information furnished has been obtained from sources we deem reliable and is submitted subject to errors, omissions and changes. Although Colliers International has no reason to doubt its accuracy, we do not guarantee it. All information should be verified by the recipient prior to lease, purchase, exchange, or execution of legal documents. © 2018 Colliers International