

# THE DAIRY BUILDING FOR LEASE

Approximately 40,000 SF



2705-2715 SE 8TH AVENUE  
PORTLAND, OREGON



CARTER BEYL  
503 542 5892  
[carter.beyl@colliers.com](mailto:carter.beyl@colliers.com)

JAMAAL BROWN  
503 499 0064  
[jamaal.brown@colliers.com](mailto:jamaal.brown@colliers.com)



# CREATE YOUR ENVIRONMENT



SECURE ON-SITE  
PARKING 4:1,000



VAGABOND BREWERY



SIZE FLEXIBILITY



AMPHITHEATER



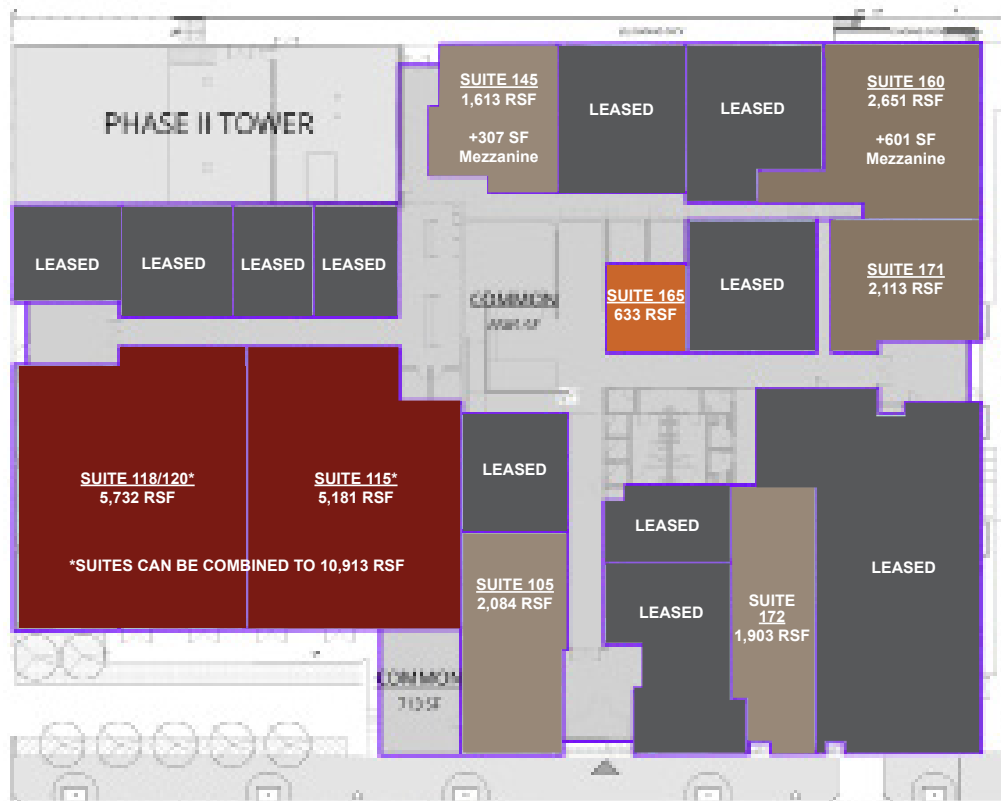
PHONE ROOMS



CONFERENCE ROOMS



COMMON KITCHEN

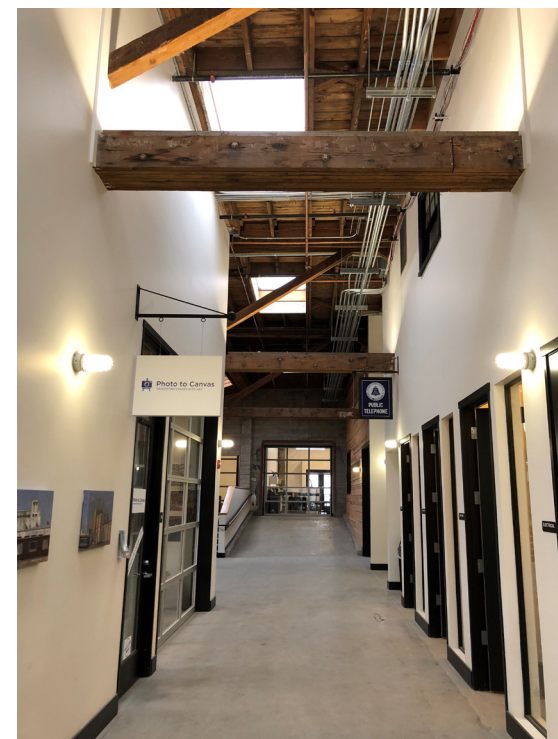


## Size Flexibility & Ranges

- 500 SF - 1,500 SF
- 1,500 SF - 3,000 SF
- 3,000 SF - 8,000 SF

**RATE RANGE:**  
\$24.00-\$27.00/SF/YR NNN

## DAIRY BUILDING TENANT ROSTER





# THE FORD DISTRICT #forddistrict



The Ford District is a place where photographers and artisan food makers bump elbows with web designers and light manufacturers. It is quickly becoming a thriving hub of shops, restaurants, entrepreneurship, and the arts within a vibrant crossroads of a commercial district and a Hosford/Abernethy neighborhood. In an effort to build community, the old industrial buildings are being renovated and repurposed with value and beauty by Intrinsic with the artists, entrepreneurs, and small businesses in the heart of Portland. The Ford District is anchored by newly renovated **1. The Dairy Building** on 8th Avenue and the historic **2. Ford Building** and **3. Jimmy's Tire & Annex** buildings, both at the corner of SE 11th and Division.



# THE DAIRY BUILDING FOR LEASE

Approximately 40,000 SF



**RATE RANGE:**  
**\$24.00-\$27.00/SF/YR NNN**

2705-2715 SE 8TH AVENUE  
PORTLAND, OREGON



CARTER BEYL  
503 542 5892  
[carter.beyl@colliers.com](mailto:carter.beyl@colliers.com)

JAMAAL BROWN  
503 499 0064  
[jamaal.brown@colliers.com](mailto:jamaal.brown@colliers.com)