

FOR SALE > INDUSTRIAL

# ROMULUS INDUSTRIAL

12750 S. HURON RIVER DRIVE | ROMULUS, MI



**2,724 SF SUITABLE FOR MULTIPLE USES**

## > PROPERTY HIGHLIGHTS

- Two Flow-Through Bays / 18' Clear Ceiling Height
- Four 14 x 14 Grade Level Doors
- Fenced Rear Lot
- M-2 Zoning
- Branch Bank Converted to Truck Repair Facility

**COLLIERS INTERNATIONAL**  
2 Corporate Drive | Suite 300  
Southfield, Michigan 48076

**For More Information Call:**

**SHERIDAN BURTON**  
PHONE 248 540 1000 EXT 1852  
[sheridan.burton@colliers.com](mailto:sheridan.burton@colliers.com)



[colliers.com/detroit](http://colliers.com/detroit)



FOR SALE > INDUSTRIAL

# ROMULUS INDUSTRIAL

12750 S. HURON RIVER DRIVE | ROMULUS, MI



## > PROPERTY PHOTOS



**SHERIDAN BURTON**  
PHONE 248 540 1000 EXT 1852  
[sheridan.burton@colliers.com](mailto:sheridan.burton@colliers.com)



**COLLIERS INTERNATIONAL**  
2 Corporate Dr. | Suite 300  
Southfield, Michigan 48076



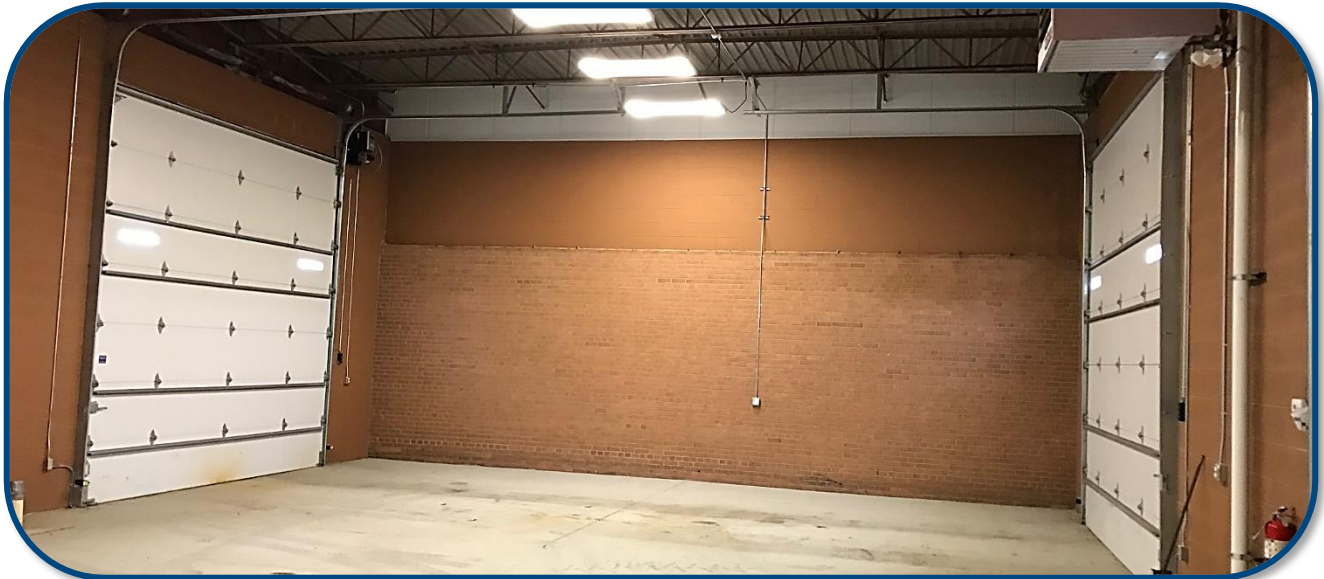
FOR SALE > INDUSTRIAL

# ROMULUS INDUSTRIAL

12750 S. HURON RIVER DRIVE | ROMULUS, MI



## > PROPERTY PHOTOS – INTERIOR



**SHERIDAN BURTON**  
PHONE 248 540 1000 EXT 1852  
[sheridan.burton@colliers.com](mailto:sheridan.burton@colliers.com)



**COLLIERS INTERNATIONAL**  
2 Corporate Dr. | Suite 300  
Southfield, Michigan 48076

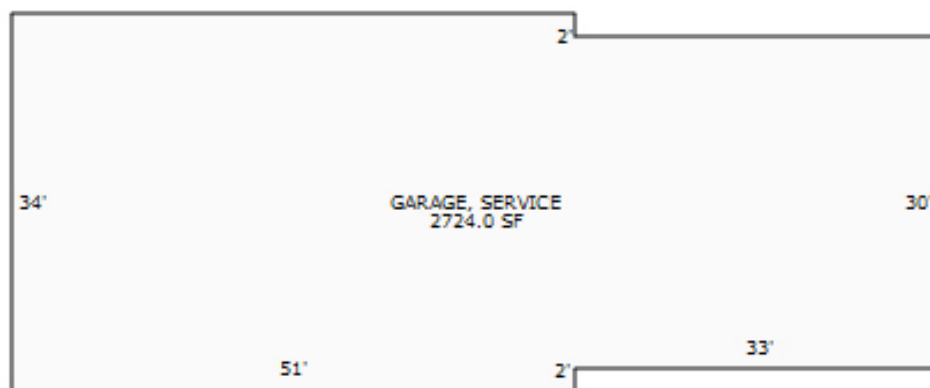
FOR SALE > INDUSTRIAL

# ROMULUS INDUSTRIAL

12750 S. HURON RIVER DRIVE | ROMULUS, MI



## > ASSESSOR'S SKETCH



**SHERIDAN BURTON**  
PHONE 248 540 1000 EXT 1852  
sheridan.burton@colliers.com



**COLLIERS INTERNATIONAL**  
2 Corporate Dr. | Suite 300  
Southfield, Michigan 48076



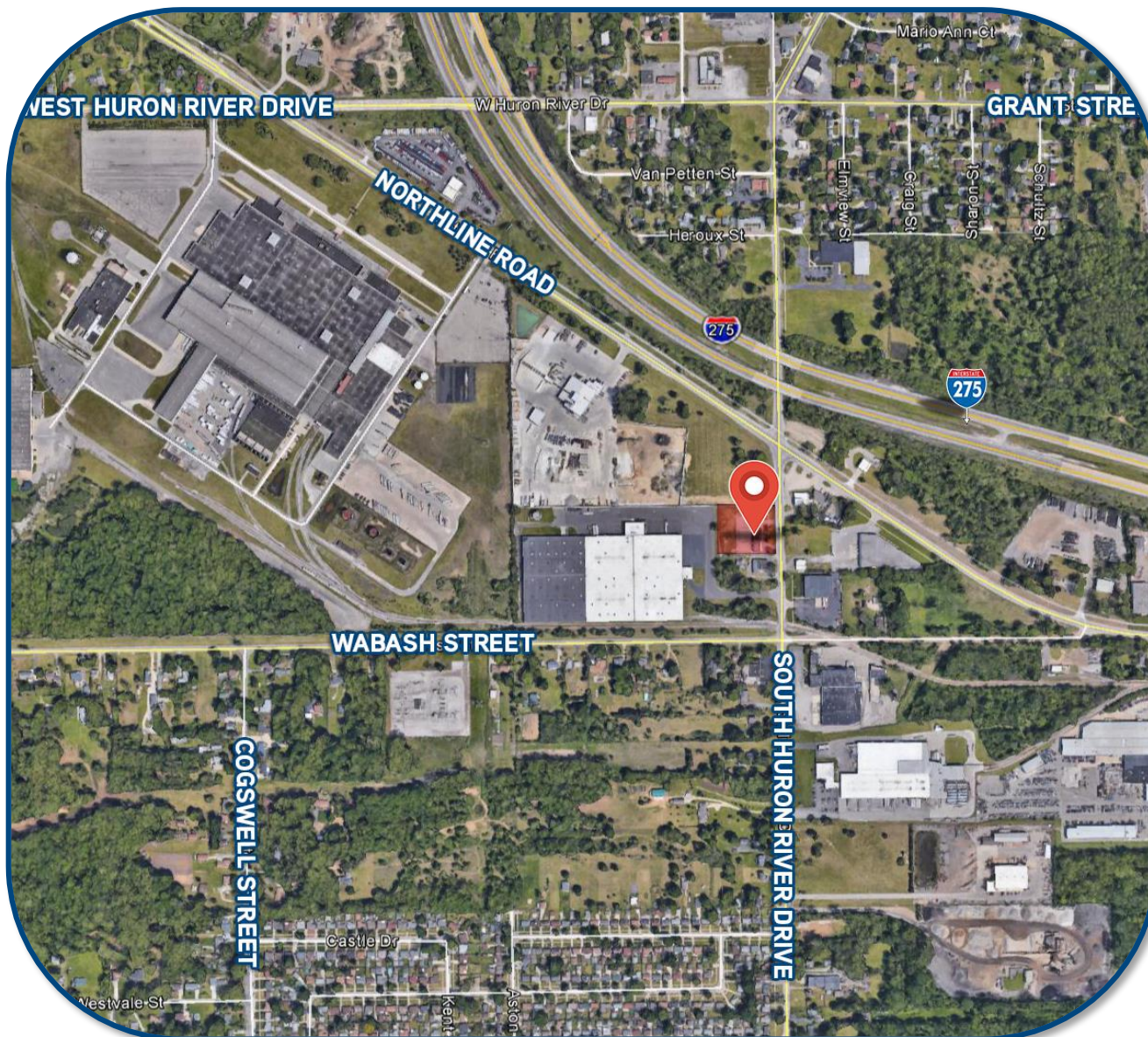
FOR SALE > INDUSTRIAL

# ROMULUS INDUSTRIAL

12750 S. HURON RIVER DRIVE | ROMULUS, MI



## > AERIAL MAP



**SHERIDAN BURTON**  
PHONE 248 540 1000 EXT 1852  
[sheridan.burton@colliers.com](mailto:sheridan.burton@colliers.com)



**COLLIERS INTERNATIONAL**  
2 Corporate Dr. | Suite 300  
Southfield, Michigan 48076



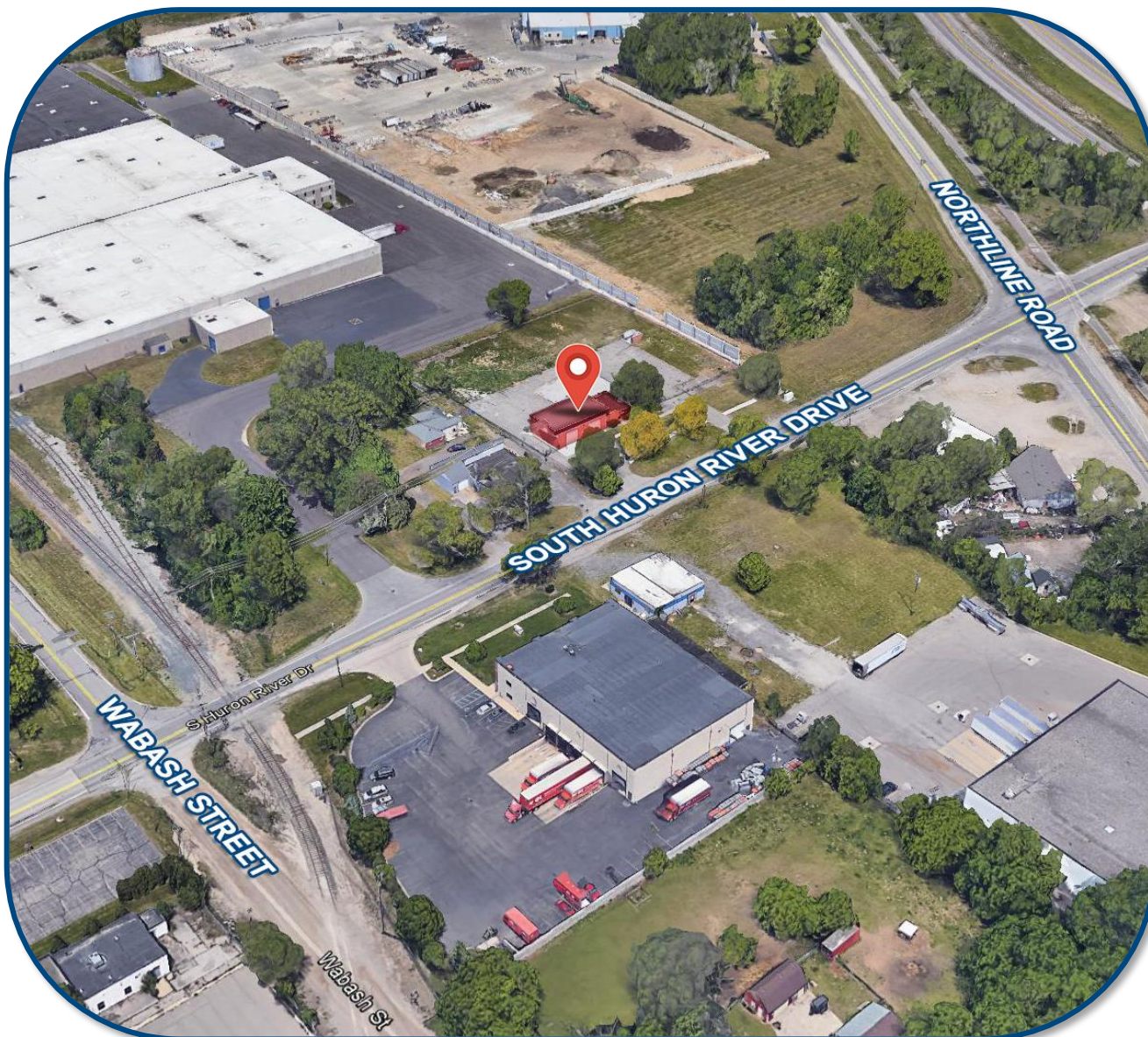
FOR SALE > INDUSTRIAL

# ROMULUS INDUSTRIAL

12750 S. HURON RIVER DRIVE | ROMULUS, MI



## > BIRD'S EYE VIEW



**SHERIDAN BURTON**  
PHONE 248 540 1000 EXT 1852  
[sheridan.burton@colliers.com](mailto:sheridan.burton@colliers.com)



**COLLIERS INTERNATIONAL**  
2 Corporate Dr. | Suite 300  
Southfield, Michigan 48076

# Industrial Availability

## For Sale

### Romulus Industrial

12750 S. Huron River Drive

Romulus, MI 48174



Sale Price: \$289,900  
Sale Price SF : \$106.42  
Lease Rate :  
Gross Sq Ft: 2,724  
Vacant Sq Ft: 2,724  
Min Available Sq Ft: 2,724  
Max Contiguous Sq Ft: 2,724  
Date Built/Renovated: 1971 / 2012  
Percent Occupied:  
Property Taxes/Year: \$5,806  
Property Taxes/SF:  
Parking: Ample

#### For more information, contact:



**Sheridan Burton**

sheridan.burton@colliers.com

**(248) 540-1000**

2 Corporate Drive, Suite 300  
Southfield, MI 48076  
248 540 1000

400 E. Washington St.  
Ann Arbor, MI 48104  
734 994 3100

[www.colliers.com](http://www.colliers.com)

County: Wayne  
Crossroads: South of Northline Road

- Two Flow-Through Bays / 18' Clear Ceiling Height
- Four 14 x 14 Grade Level Doors
- Fenced Rear Lot
- M-2 Zoning
- Floor Drain
- Converted Branch Bank to Truck Repair Facility

Ceiling Ht: 20'/18' Clear  
Doors: (4) 14 x 14  
Docks:  
Bay Size:  
Cranes: None  
Underhook: None  
Fixtures: T-8 Lighting  
Power: 325 AMPS / 220 V  
Heating: Reznor  
Buss Duct:  
Railroad: No

Shop SF:	1,617	Office SF:	1,107
Shop Rate:		Office Rate:	
Shop Dimensions:			

Acres:	1.47	Site Status:	Existing
Sub-Type:		Zoning:	M-2

Construction:	Existing	Roof:	Flat
Multi-tenant:	No	Floors:	1
Free-standing:	Yes	Sprinklers:	
Basement:	No		