



Available
Now

±245,712 SF
Available




Class A Warehouse For Lease

Virginia Port Logistics Park

1010 Centerpoint Dr., Suite 100 | Suffolk, VA 23434

Lang Williams, SIOR
Executive Vice President
+1 757 679 9106
lang.williams@colliers.com

Pat Molloy
Associate
+1 202 321 5882
pat.molloy@colliers.com



±245,712 SF
Available

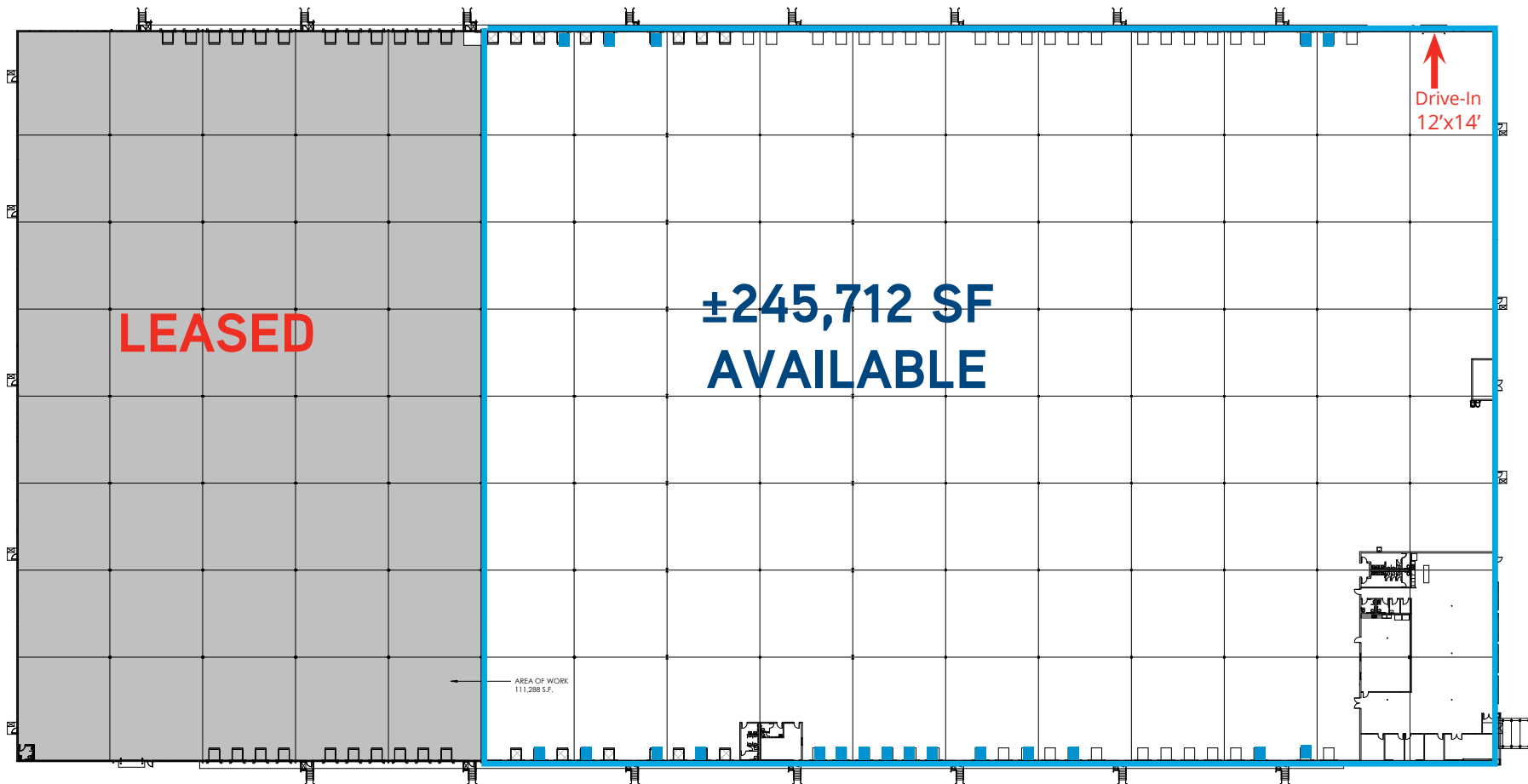
Property Highlights

The Virginia Port Logistics 1010 Building is a class A Warehouse located in the 932-Acre Virginia Port Logistics Park (“VPLP”), a premier master-planned logistics development near the Port of Virginia. Equus Capital Partners has completed 3 million square feet of speculative and build-to-suit Class A development in VPLP since 2020 for Amazon, Lowe’s, NFI, Dart Warehousing, CXO, and Massimo-Zanetti Beverage USA.

The City of Suffolk is on schedule for Summer 2025 completion of a major improvement to the Route 58 / Holland Road corridor to a six-lane divided roadway and new intersections at the Centerpoint Drive and Enterprise Drive signalized entrances to the park. The burgeoning Route 58 Corridor is a proven logistics destination with 15 buildings totaling 7.7 million square feet, nearly 9% of the entire Norfolk/ Port of Virginia industrial market.

FLOOR PLAN

1010 BUILDING, SUFFOLK, VA

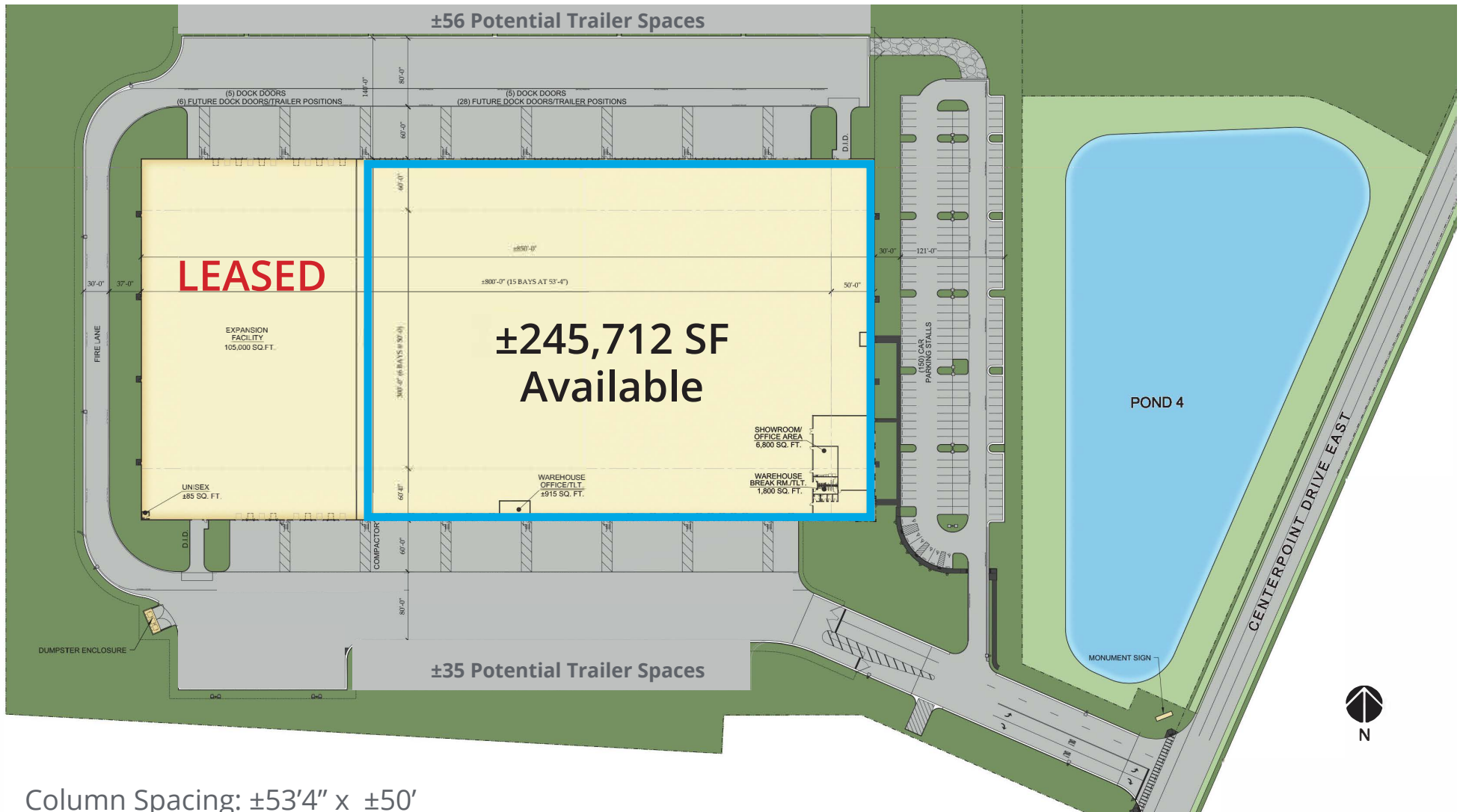


Features:

- Space Size: 245,712 SF
- Front Office: ±8,600 SF
- Warehouse Office: ±915 SF
- Dimensions: 420' x 586'
- 130' Truck Court
- 42 trailer spaces alongside building
 - Expandable by 101 Spaces
- Dock Doors: 20
 - All docks equipped with 40,000 lb. leveler
 - Expandable to 62 doors
- 32' Clear Height
- ESFR Sprinkler
- High efficiency fluorescent warehouse light fixtures on motion sensors

SITE PLAN

1010 BUILDING, SUFFOLK, VA



- Column Spacing: ±53'4" x ±50'
- Loading Bay each side ±60'
- ±50' Concrete Ramp
- Fenced Site/Truck Court
- Potential Additional Trailer Spaces Available at Additional Cost

VIRGINIA PORT LOGISTICS PARK AERIAL

AS OF MAY 24, 2024



AMENITIES MAP

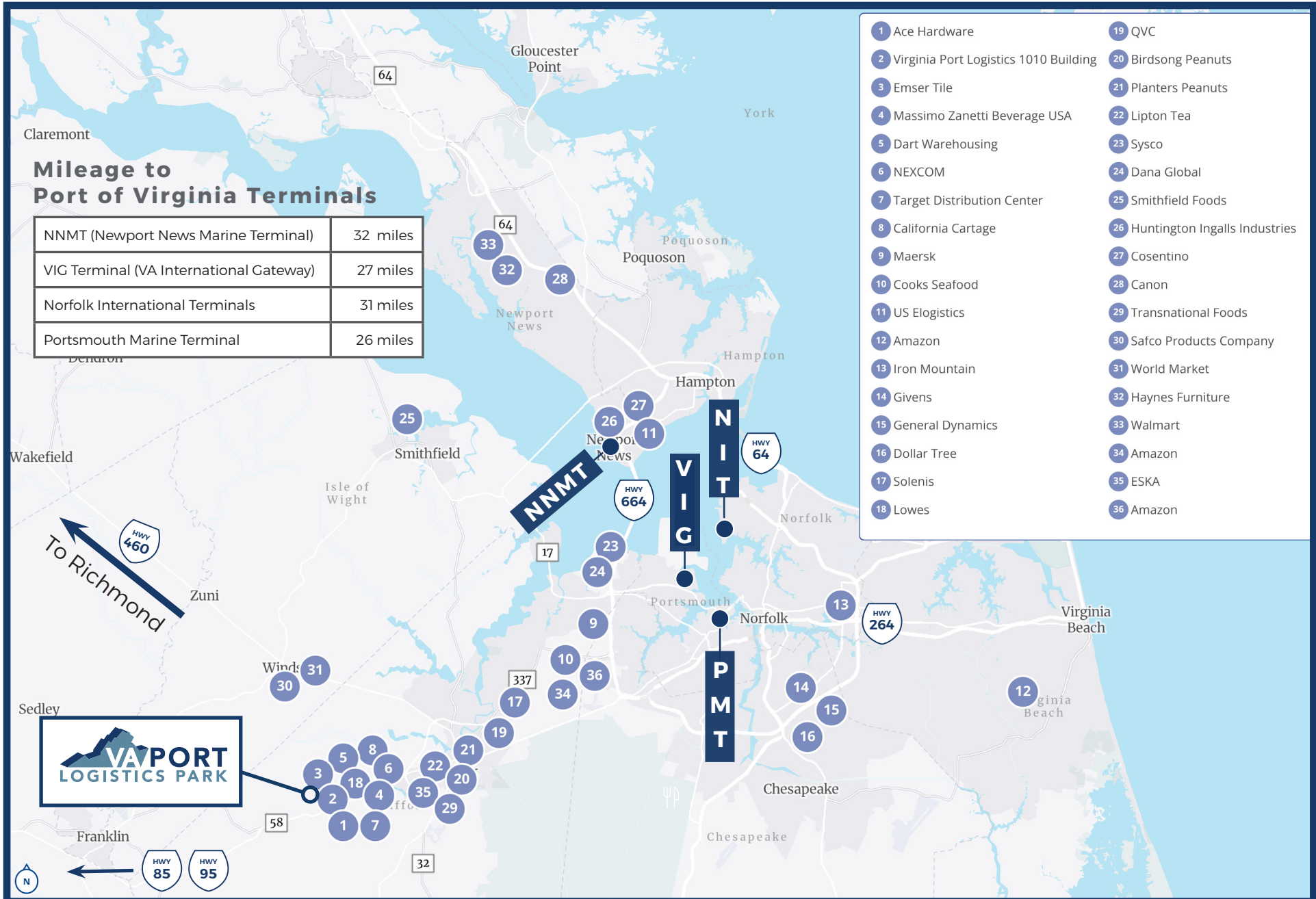
Route 58/Holland Road Corridor Improvements



Expanding to 6-Lane Divided Roadway
Summer 2025 Scheduled Completion

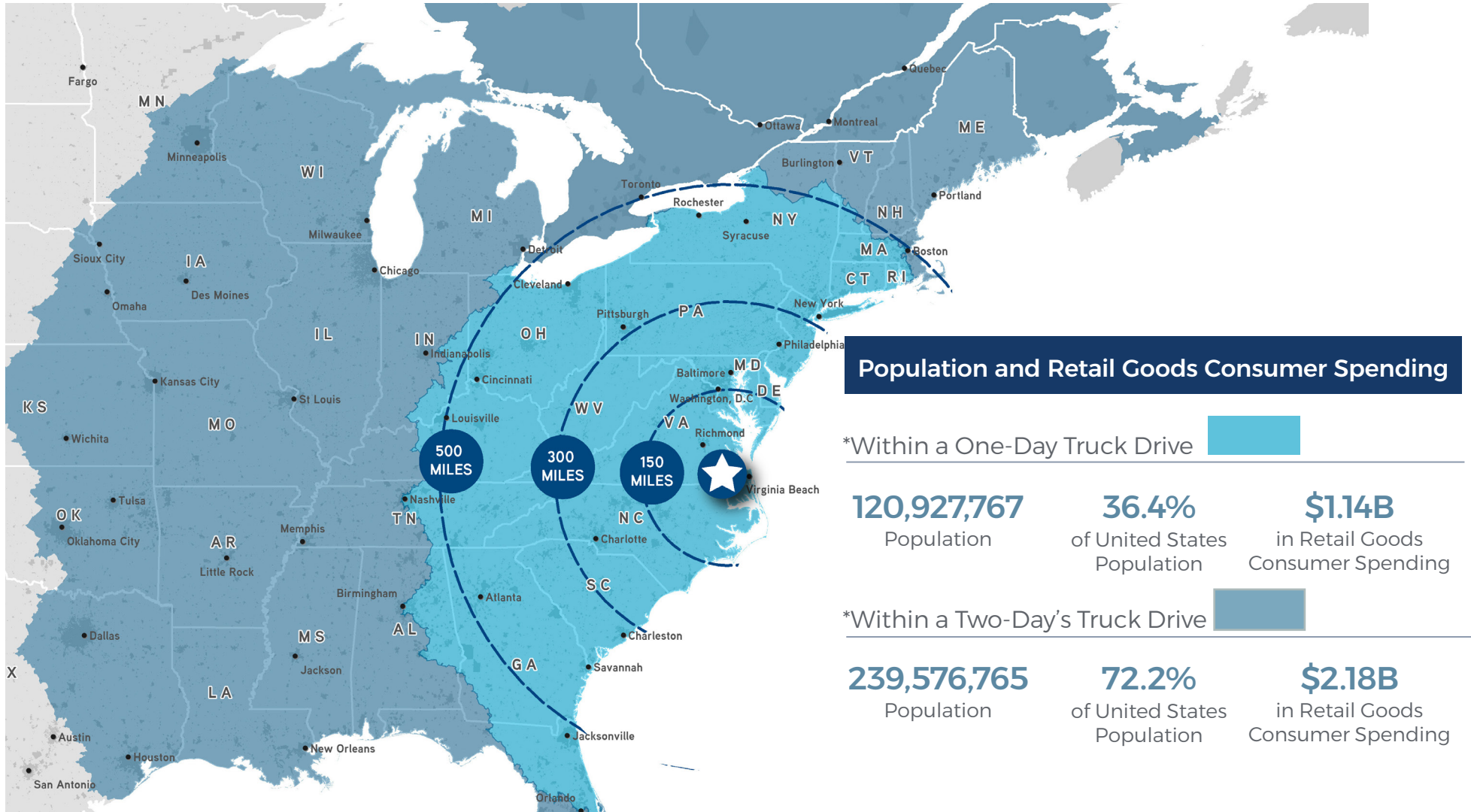


REGIONAL MAP & LOGISTICS USERS



VIRGINIA PORT LOGISTICS PARK

POPULATION AND RETAIL GOODS CONSUMER SPENDING



Lang Williams, SIOR
Executive Vice President
+1 757 679 9106
lang.williams@colliers.com

Pat Molloy
Associate
+1 202 321 5882
pat.molloy@colliers.com

Colliers
150 W. Main St. Suite 1100
Norfolk, VA 23510
+1 757 490 3300
colliers.com/norfolk