

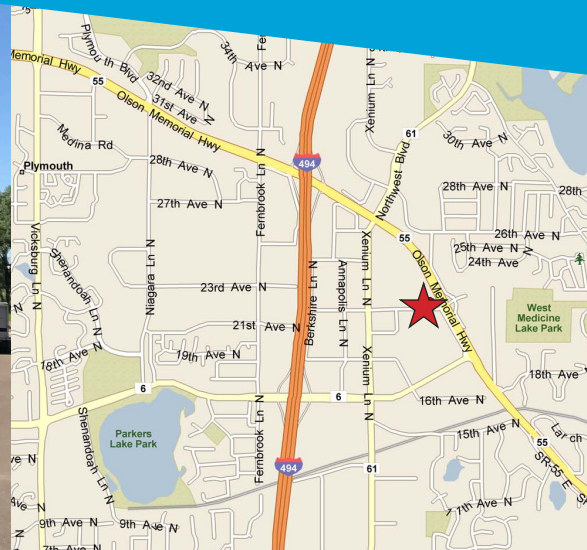
INDUSTRIAL SPACE FOR LEASE >

Plymouth Oaks Park

Highway 55 & Industrial Park Blvd | Plymouth, MN 55441



Accelerating success.



BUILDING AMENITIES

- > Outstanding location with easy access to I-494 & Highway 55
- > Showroom quality space at competitive rates
- > Flexible space sizes from 1,800 square feet
- > Dock high or grade level loading
- > 14' clear ceiling height
- > Office built-to-suit
- > Local, responsive ownership & management

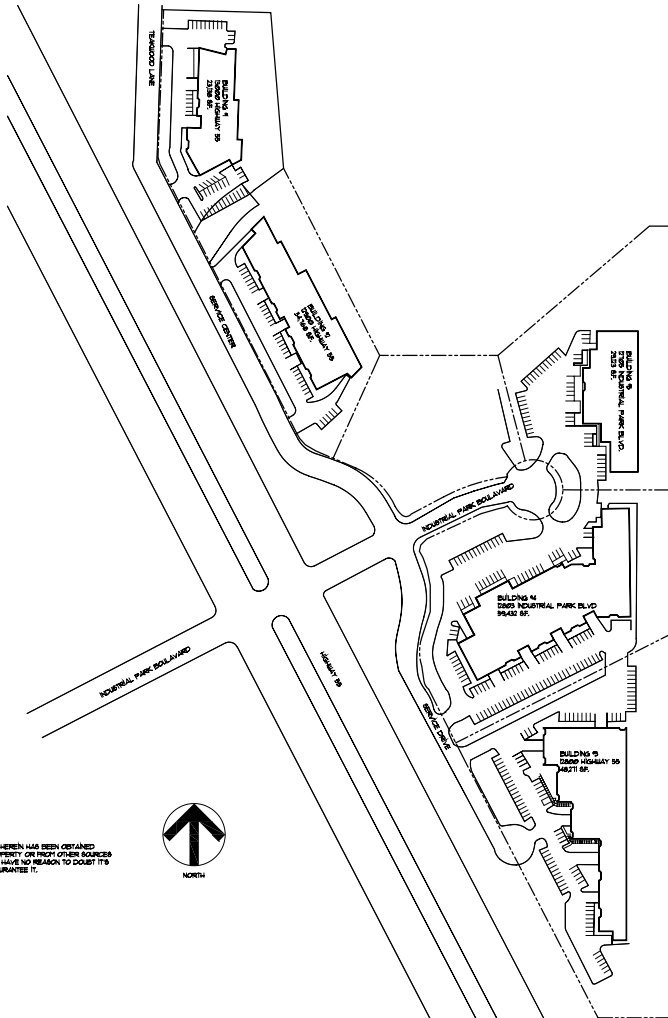
CONTACT US

PAUL BICKFORD
952 897 7732
MINNEAPOLIS, MN
paul.bickford@colliers.com

ANDREW ODNEY
952 897 7709
MINNEAPOLIS, MN
andrew.odney@colliers.com

COLLIERS INTERNATIONAL
4350 Baker Road, Suite 400
Minnetonka, MN 55343
www.colliers.com/msp

PLYMOUTH OAKS PARK > SITE PLAN



CONTACT US

PAUL BICKFORD
952 897 7732
MINNEAPOLIS, MN
paul.bickford@colliers.com

ANDREW ODNEY
952 897 7709
MINNEAPOLIS, MN
andrew.odney@colliers.com



Accelerating success.

Colliers International | Minneapolis-St. Paul | 4350 Baker Road, Suite 400, Minnetonka, MN 55343 | colliers.com/msp

Plymouth Oaks Park Bldg 1

13000-13300 Highway 55 | Plymouth, MN 55441

PROPERTY ADDRESS:

13000-13300 Highway 55
Plymouth, MN

CURRENTLY AVAILABLE:

SUITE 13000:

5,177 square feet total
1,677 square feet office
3,500 square feet warehouse
• One (1) dock door

YEAR BUILT:

1984

CLEAR HEIGHT:

14'

COLUMN SPACING:

40' x 30'

BUILDING SQUARE FEET:

23,138 square feet total

NET RENTAL RATES:

\$9.00 per square foot office
\$4.50 per square foot warehouse

2018 EST. CAM & REAL ESTATE TAX:

\$1.60 per square foot CAM
\$1.77 per square foot Tax
\$3.37 total per square foot

AMENITIES:

- Convenient freeway access
- Ample parking
- Extensive landscaping
- Fully sprinklered
- Energy efficient



FOR LEASING INFORMATION, CONTACT:

Paul Bickford

952 897 7732

paul.bickford@colliers.com

Andrew Odney

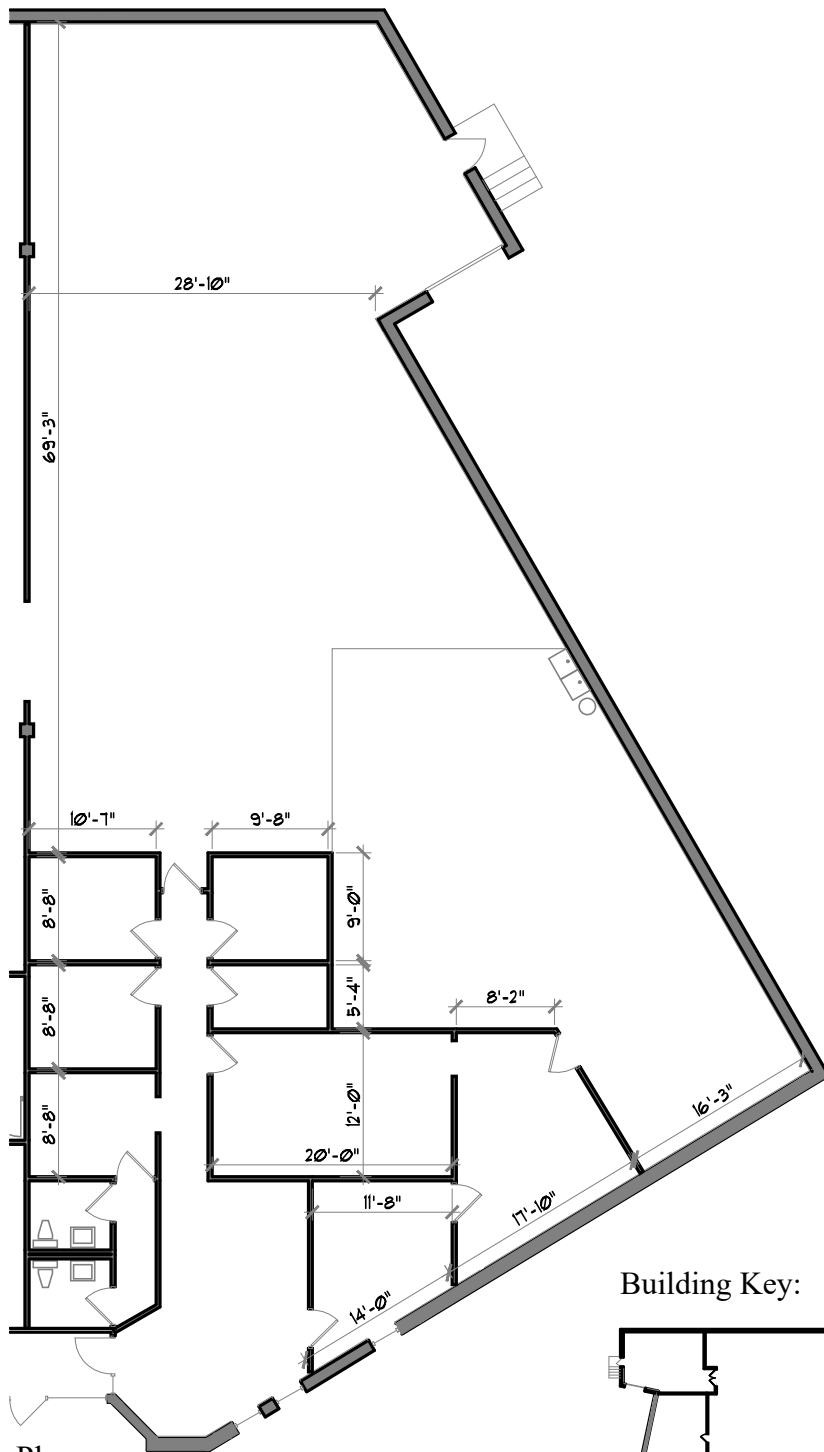
952 897 7709

andrew.odney@colliers.com

Colliers International | Minneapolis-St. Paul
4350 Baker Road, Suite 400, Minnetonka, MN 55343
www.colliers.com



SUBSCRIBE TO OUR BLOG



Floor Plan

Scale: 1/16"=1'-0"

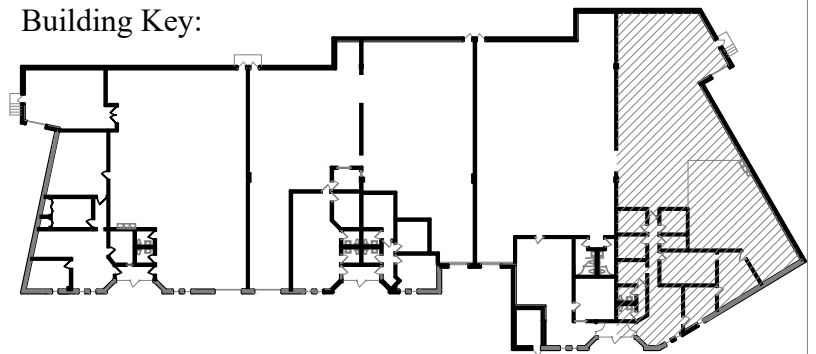
Square Footage:

Office = 1,677 Sq. Ft.

Whse = 3,500 Sq. Ft.

Total = 5,177 Sq. Ft.

Building Key:



GENESIS
ARCHITECTURE

4350 Baker Road, Suite 400
Minnetonka, MN 55343
952.897.7874 Fax: 952.897.7740

Plymouth Oaks Park I

**13000 Highway 55
Plymouth, MN 55441**



Leasing Contacts:

Paul Bickford: (952) 897-7732
Andrew Odney: (952) 897-7709
Rob Brass: (952) 897-7757