

FOR LEASE > OFFICE WAREHOUSE



5140 Kansas Avenue

KANSAS CITY, KANSAS



Property Features

- > Building size: 117,750 SF
- > Office: built-to-suit
- > Clear height: 29'-33'
- > Loading:
 - > 7 dock-high doors with pit levelers
 - > 1 drive-in door
- > Column spacing: 56' 11" x 52' 10"
- > Electrical: 600 amp, 480/277 volt, 3-phase
- > Sprinkler: wet system
- > Lighting: T5 30' FC
- > Centrally located in Turner Industrial District
- > Excellent access to I-635 & I-70
- > Lease rate: \$4.20 PSF, industrial gross

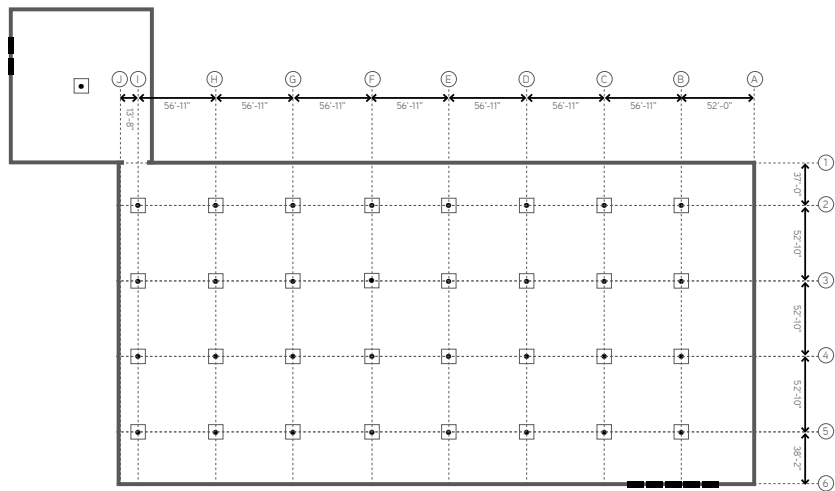
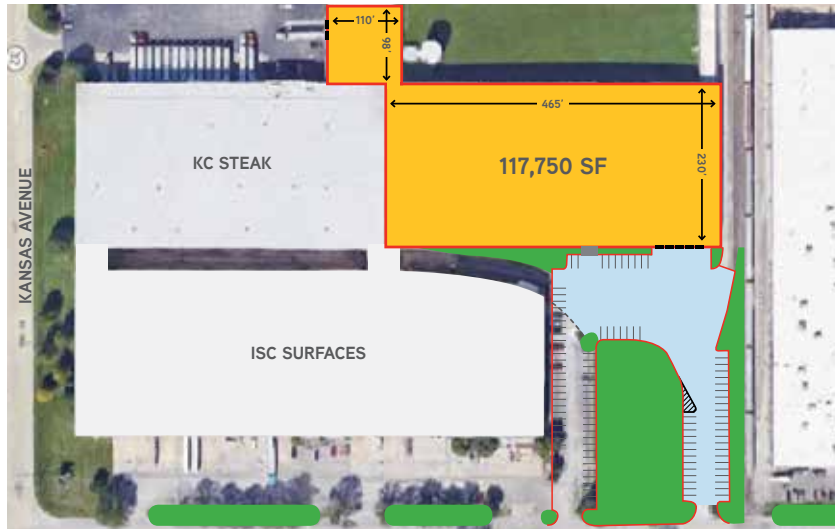
DOUG HEDRICK SIOR, CCIM
+1 816 556 1136
KANSAS CITY, MO
doug.hedrick@colliers.com

ED ELDER SIOR
+1 816 556 1135
KANSAS CITY, MO
ed.elder@colliers.com

COLLIERS INTERNATIONAL
4520 Main Street, Suite 1000
Kansas City, MO 64111
www.colliers.com

5140 KANSAS AVENUE

FOOT PRINT



Contact Us

DOUG HEDRICK SIOB, CCIM

+1 816 556 1136

KANSAS CITY, MO

doug.hedrick@colliers.com

ED ELDER SIOB

+1 816 556 1135

KANSAS CITY, MO

ed.elder@colliers.com

COLLIERS INTERNATIONAL
4520 Main Street, Suite 1000
Kansas City, MO 64111

www.colliers.com

This document has been prepared by Colliers International for advertising and general information only. Colliers International makes no guarantees, representations or warranties of any kind, expressed or implied, regarding the information including, but not limited to, warranties of content, accuracy and reliability. Any interested party should undertake their own inquiries as to the accuracy of the information. Colliers International excludes unequivocally all inferred or implied terms, conditions and warranties arising out of this document and excludes all liability for loss and damages arising there from. This publication is the copyrighted property of Colliers International and/or its licensor(s). ©2017. All rights reserved.

