

FOR SUBLEASE › INDUSTRIAL/OFFICE SPACE



30,000-210,000 SF Available

275 BODWELL STREET, AVON, MA



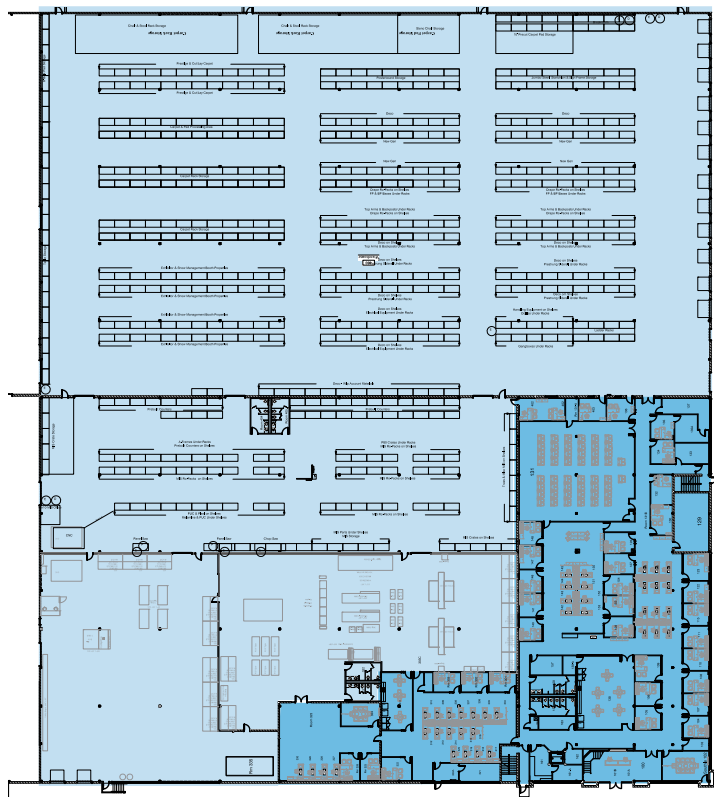
BUILDING OVERVIEW

BUILDING SIZE	210,000 SF	CONSTRUCTION	Masonry
AVAILABLE	30,000 SF up to 210,000 SF	SPRINKLERS	Wet sprinkler system throughout (partial ESFR)
YEAR BUILT	1984	POWER	2,000 amp, 277/480V 3-phase service
LAND AREA	11.42 Acres	UTILITIES	Gas: Columbia Gas Electric: National Grid Water/Septic: Town of Avon/ Private Septic
TERM	Through July 2025	LOCATION	Located in the Avon Industrial Park approximately 3.5 miles from Route 128 and I-93 on Route 24.
CEILING HEIGHT	25'		
COLUMN SPACING	40' x 40'		
PARKING	150 surface spaces		
LOADING	18 loading docks, 1 drive-in		
AIR CONDITIONING	Office		

STEVE WOELFEL
617 330 8168
BOSTON, MA
stephen.woelfel@colliers.com

PJ FOSTER
617 330 8116
BOSTON, MA
pj.foster@colliers.com

CALEB HUDAK
617 330 8018
BOSTON, MA
caleb.hudak@colliers.com



Floor 1

WAREHOUSE

OFFICE



Contact Us

STEVE WOELFEL

617 330 8168

stephen.woelfel@colliers.com

PJ FOSTER

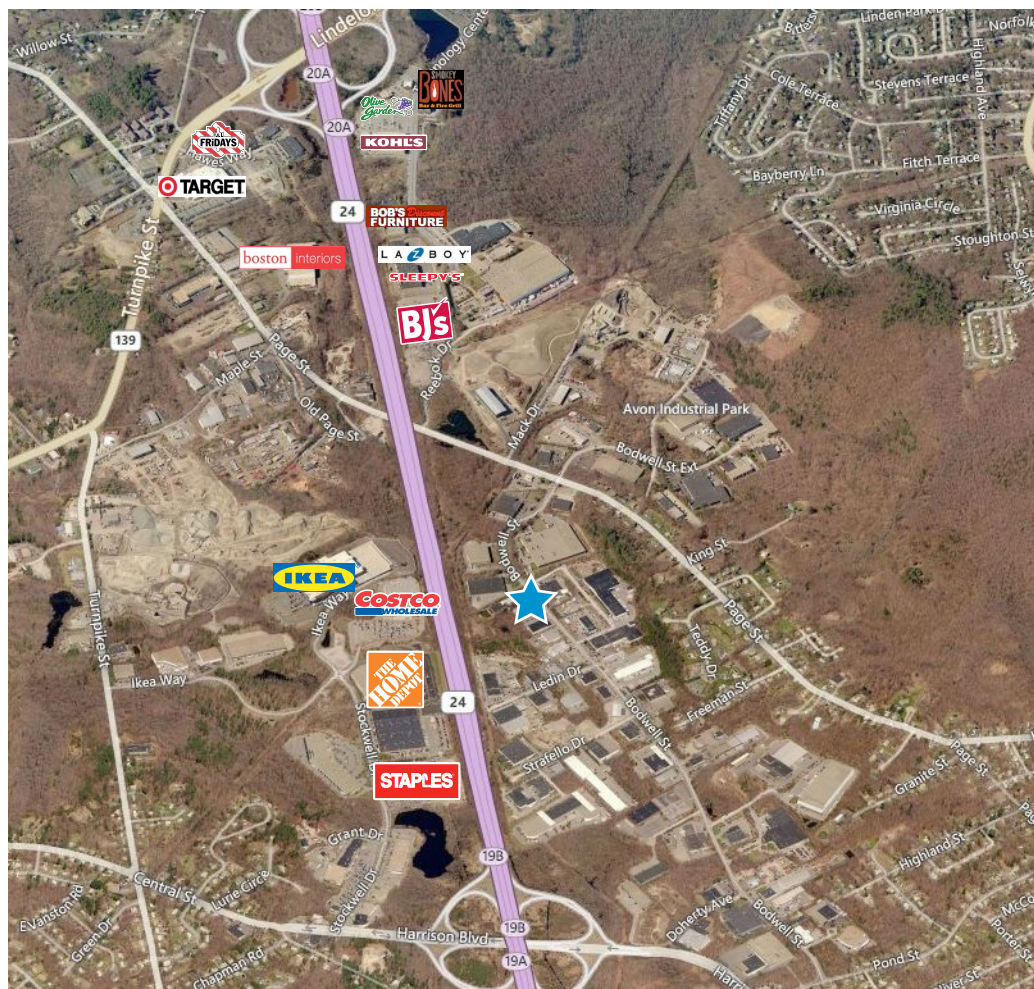
617 330 8116

pj.foster@colliers.com

CALEB HUDAK

617 330 8018

caleb.hudak@colliers.com



This document has been prepared by Colliers International for advertising and general information only. Colliers International makes no guarantees, representations or warranties of any kind, expressed or implied, regarding the information including, but not limited to, warranties of content, accuracy and reliability. Any interested party should undertake their own inquiries as to the accuracy of the information. Colliers International excludes unequivocally all inferred or implied terms, conditions and warranties arising out of this document and excludes all liability for loss and damages arising there from. This publication is the copyrighted property of Colliers International and/or its licensor(s). ©2016. All rights reserved.

