



Champions Plaza Lot For Sale

4211 S. Champions Drive
Rogers, AR 72758

PAT MORRISON
BROKERAGE | ARKANSAS
DIR: 479 845 1503
MOB: 479 936 4200
pat.morrison@colliers.com



COLLIERS INTERNATIONAL
4204 S Pinnacle Hills Pkwy, Ste 102
Rogers, AR 72758
479 636 9000
www.colliers.com/arkansas

Accelerating success.

KEY FEATURES/HIGHLIGHTS

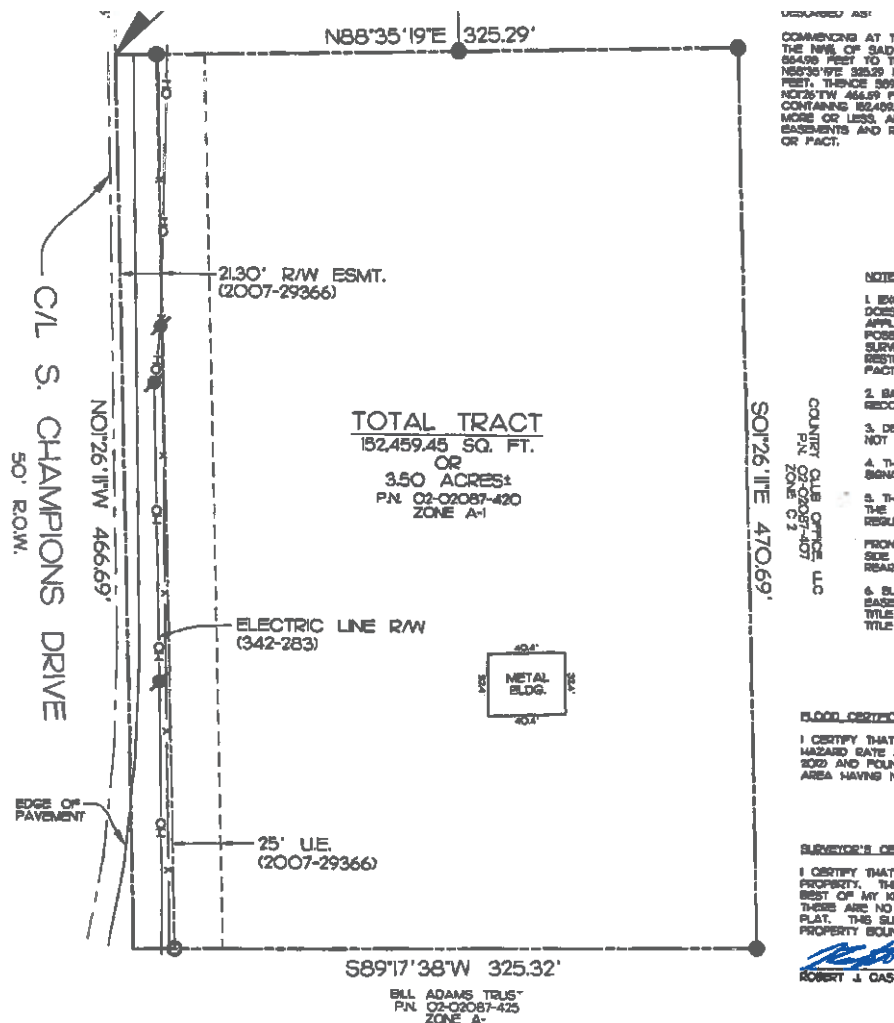
PRICE > \$1,900,000

- > 3.50 Acre Lot
- > Located at the entrance to Pinnacle Golf and Country Club, adjacent to the Country Club Plaza office and retail development
- > Directly adjacent to Walmart Neighborhood Market
- > Surrounded by high end and high volume retailers and restaurants
- > Easy access from I-49
- > Northwest Arkansas' most dynamic growth area with new projects constantly emerging

AERIAL



SITE PLAN



Demographic	1 Mile	3 Miles	5 Miles
Total Population 2016	2,971	27,365	87,267
Projected Population 2021	3,443	31,318	98,004
Estimated House-holds 2016	968	10,049	31,347
Projected Households 2021	1,120	11,437	35,073
Average Household Income 2016	\$160,135	\$107,694	\$79,891

CONTACT US

PAT MORRISON
DIR: 479 845 1503
pat.morrison@colliers.com



COLLIERS INTERNATIONAL
4204 S Pinnacle Hills Pkwy, Ste 102
Rogers, AR 72758
479 636 9000
www.colliers.com/arkansas