

FOR LEASE > RETAIL/OFFICE SPACE

430-450 Bay Street

FIRSHERMAN'S WHARF | SAN FRANCISCO



430-450 Bay Street

Single Floors or Full Building Available

Ground Floor Approximately 2,100 RSF

2nd Floor Approximately 2,100 RSF

Total Approximately 4,200 RSF

- > Excellent natural light with skylights on top floor
- > Active Fisherman's Wharf location, across from Trader Joe's
- > Excellent public transit access
- > Solid, stable, building ownership

JOHN JENSEN

LIC. 01102014

CELL: 415 867 1178

john.jensen@colliers.com

COLLIERS INTERNATIONAL
101 Second Street, 11th Floor
San Francisco, CA 94105
www.colliers.com

FOR LEASE >RETAIL/OFFICE SPACE

430-450 Bay Street

Ground Floor Approximately 2,100 RSF



FOR LEASE >RETAIL/OFFICE SPACE

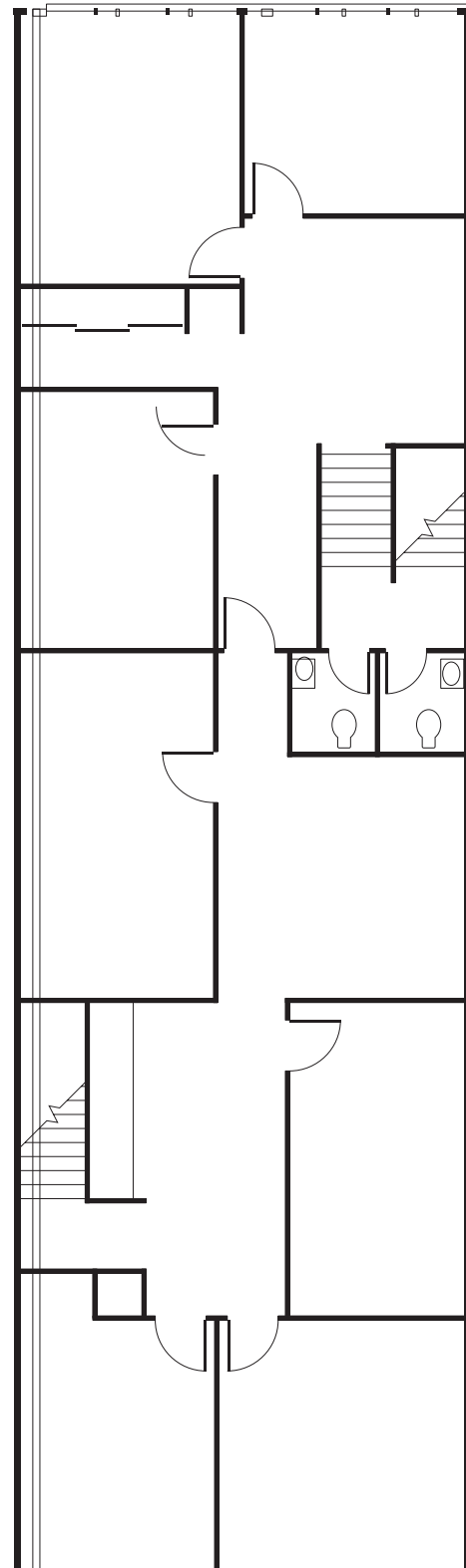
430-450 Bay Street

2nd Floor Approximately 2,100 RSF

8 Private Offices and Open Workspace

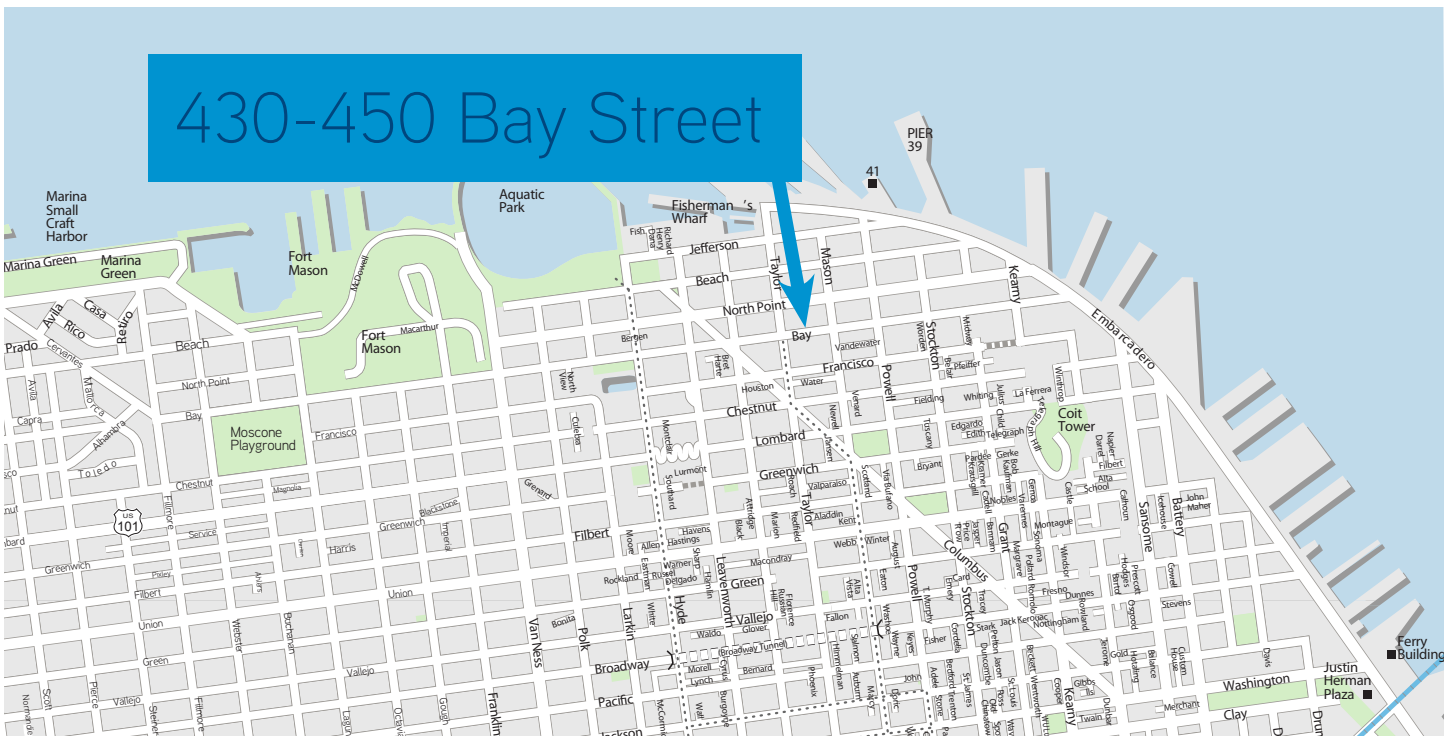


Bay Street



FOR LEASE > RETAIL/OFFICE SPACE

430-450 Bay Street



This marketing piece has been prepared by Colliers International for general information only. Information contained herein has been obtained from sources deemed reliable and no representation is made as to the accuracy thereof. Colliers International does not guarantee, warrant or represent that the information contained in this document is correct. Any interested party should undertake their own inquiries as to the accuracy of the information. Colliers International excludes equivocally all inferred or implied terms, conditions and warranties arising out of this document and excludes liability for loss and damages arising therefrom

JOHN JENSEN
LIC. 01102014
CELL: 415 867 1178
john.jensen@colliers.com

COLLIERS INTERNATIONAL
101 Second Street, 11th Floor
San Francisco, CA 94105
www.colliers.com