

FOR LEASE > OFFICE SPACE

# Pinnacle Park

1995 NORTH 1120 WEST PROVO, UTAH, 84604



## Property Information

- > Available space: 1,400 SF
- > \$1275 / month, Full Service
- > Daylight basement
- > 2 Large work areas
- > 2 Offices, Break Room, Bathroom, Storage Room

Connor Salmon  
+1 801 369 2051  
connor.salmon@colliers.com

Cody Black  
+801 610 1300  
cody.black@colliers.com

Colliers International  
2100 Pleasant Grove Blvd. | Suite 200  
Pleasant Grove, UT 84062  
P: +1 801 610 1300

FOR LEASE > OFFICE SPACE

# Pinnacle Park

1995 NORTH 1120 WEST PROVO, UTAH, 84604



Connor Salmon  
+1 801 369 2051  
connor.salmon@colliers.com

Colliers International  
2100 Pleasant Grove Blvd. | Suite 200  
Pleasant Grove, UT 84062  
P: +1 801 610 1300

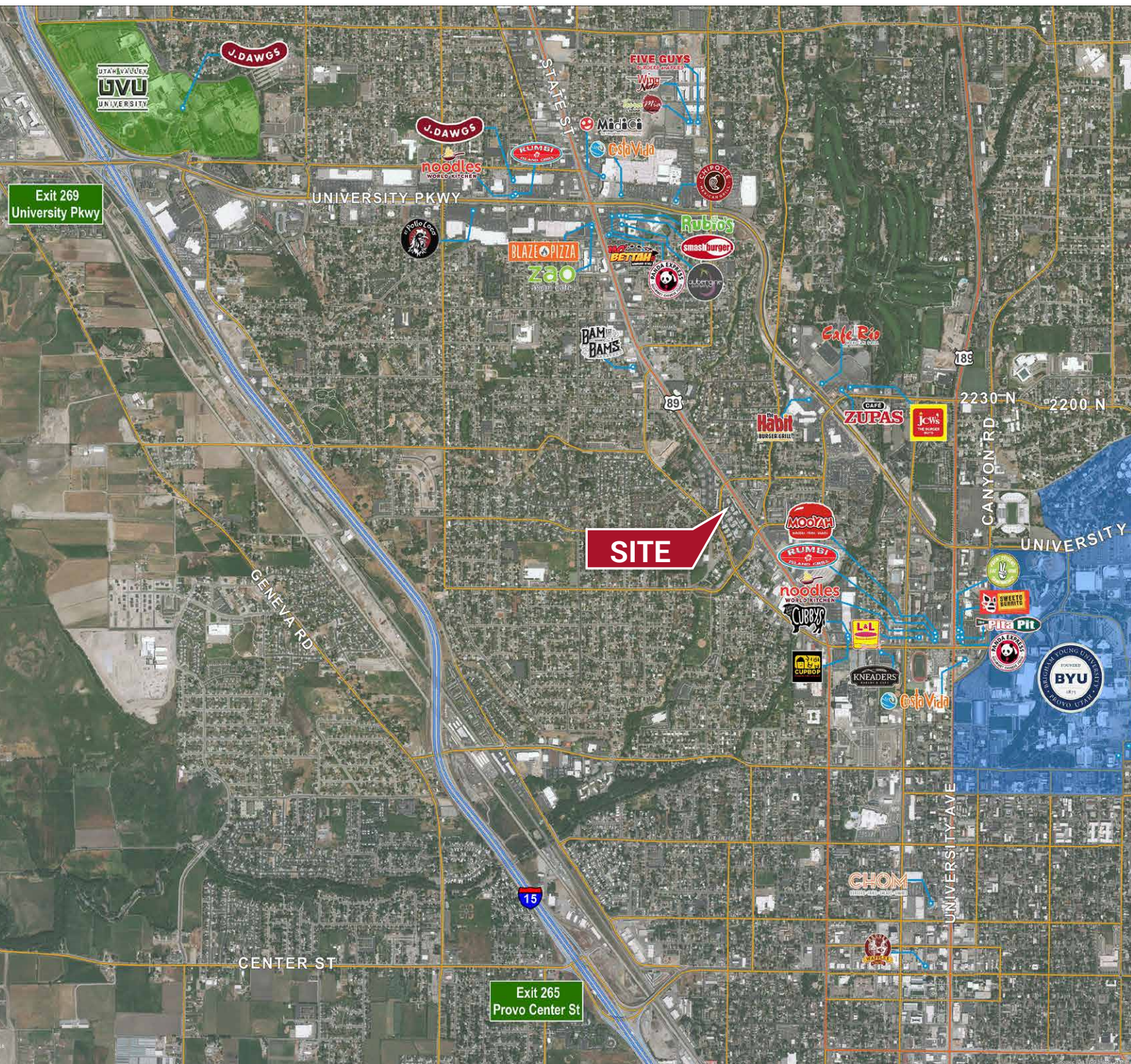




FOR LEASE > OFFICE SPACE

# Pinnacle Park

1995 NORTH 1120 WEST PROVO, UTAH, 84604



This document has been prepared by Colliers International for advertising and general information only. Colliers International makes no guarantees, representations or warranties of any kind, expressed or implied, regarding the information including, but not limited to, warranties of content, accuracy and reliability. Any interested party should undertake their own inquiries as to the accuracy of the information. Colliers International excludes unequivocally all inferred or implied terms, conditions and warranties arising out of this document and excludes all liability for loss and damages arising there from. This publication is the copyrighted property of Colliers International and/or its licensor(s). ©2018. All rights reserved.

Colliers International  
2100 Pleasant Grove Blvd. | Suite 200  
Pleasant Grove, UT 84062  
P: +1 801 610 1300

