

FOR SALE > ±2.25 ACRES



Cordelia Road @ Chadbourne Road

FAIRFIELD, CA



Property Overview

- > Size: approximately ±2.25 gross acres
- > Access: Chadbourne Road / Cordelia Road
- > Zoning: Light Industrial (IL) - City of Fairfield
- > Dimensions: ±936' along Southern Pacific Rail x ±224' along Chadbourne Road (irregular)
- > APN: 0028-230-300
- > Utilities:
 - 12" water - Cordelia Road @ Chadbourne Road
 - 30" sewer - Cordelia Road
 - 15" sewer - Cordelia Road @ Chadbourne Road
 - 12" and 48" storm drain - Cordelia Road @ Chadbourne Road
- > Less than one (1) mile from Hwy. 12 / I-80
- > Sales Price: Contact Brokers

Copyright © 2017 Colliers International. Information herein has been obtained from sources deemed reliable, however its accuracy cannot be guaranteed. The user is required to conduct their own due diligence and verification.

JON QUICK
+1 707 863 8359
jon.quick@colliers.com
CA License No. 01242750

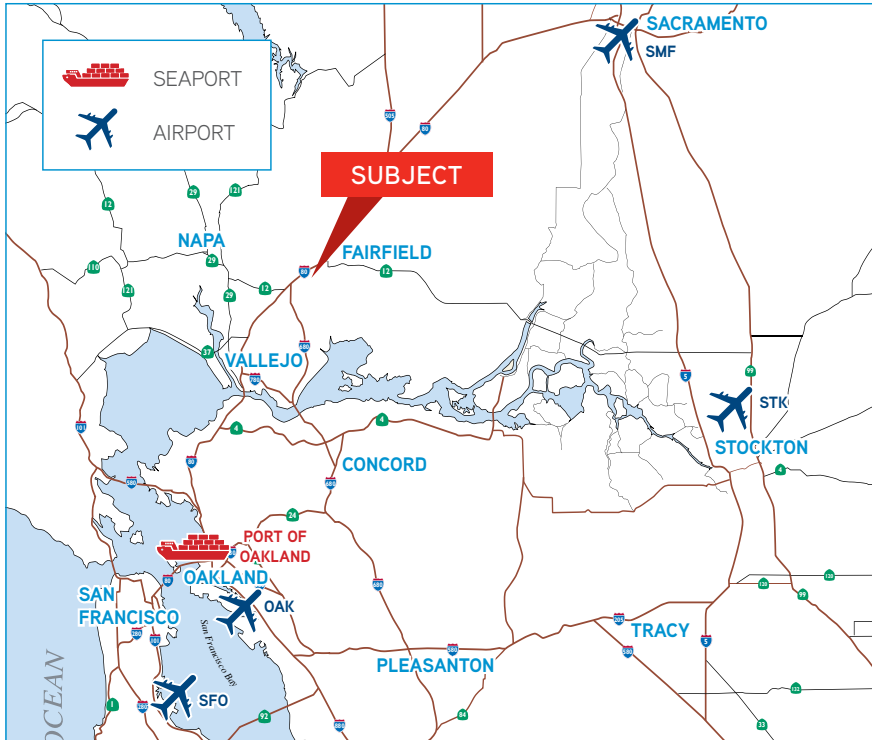
PHIL GARRETT, SIOR
+1 707 863 8357
phil.garrett.colliers.com
CA License No. 00844836

COLLIERS INTERNATIONAL
360 campus Lane, Suite 101
Fairfield, CA 94534
www.colliers.com

FOR SALE > ±2.25 ACRES

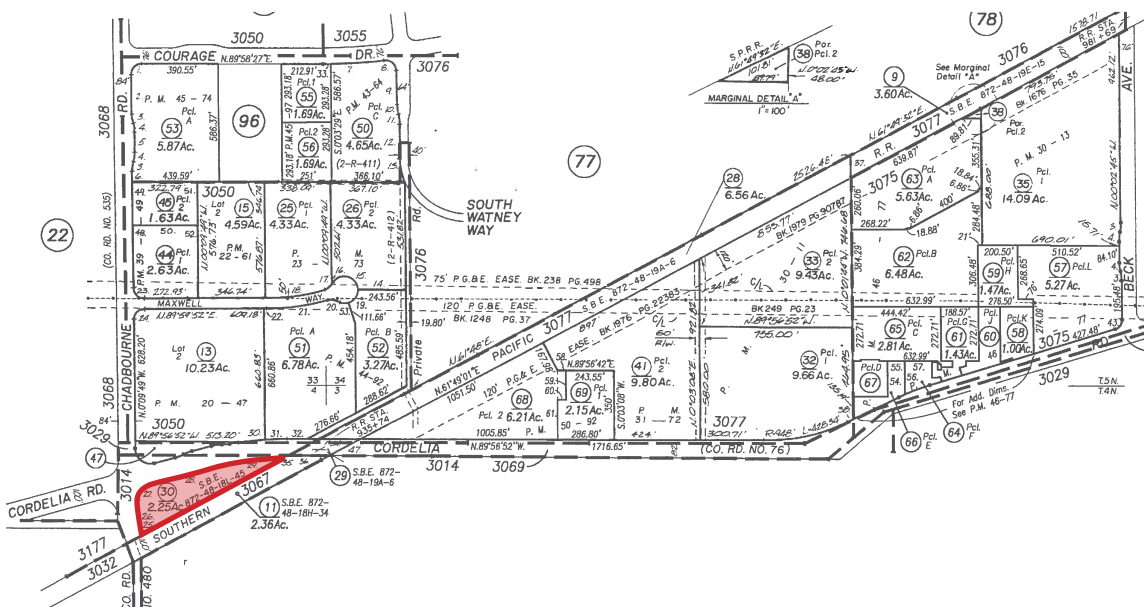
Cordelia Road @ Chadbourne Road

FAIRFIELD, CA



PROXIMITY FROM PROJECT (MILES):

I-680.....	3
I-505.....	12
Napa Valley.....	14
Port of Oakland.....	40
Oakland Airport.....	48
Sacramento Airport.....	49
SFO Int'l Airport.....	55



Contact Us:

JON QUICK
+1 707 863 8359
jon.quick@colliers.com
CA License No. 01242750

PHIL GARRETT, SIOR
+1 707 863 8357
phil.garrett.colliers.com
CA License No. 00844836

COLLIERS INTERNATIONAL
360 campus Lane, Suite 101
Fairfield, CA 94534
www.colliers.com