

AVAILABLE > 46,760 +/- SF



3406 West Main Street

TUPELO, MS 38801



Colliers International Memphis is pleased to announce the listing of 3406 West Main Street, Tupelo, MS 38801. This property features cross-dock loading, 28' ceiling height, concrete truck courts, and ample outside storage. This building is in the process of being retrofitted with a brand new roofing system. The owner is offering brand new office furnishing for a five + year lease commitment.

Property Description

- | | | | |
|--------------------------|----------------|-----------------------|---|
| > Total Square Feet: | 300,000 +/- sf | > Truck Court: | 110' |
| > Available Square Feet: | 46,760 +/- sf | > Column Spacing: | 30' x 34' |
| > Office Area: | BTS | > Warehouse Lighting: | T-5 Fluorescent |
| > Structure Exterior: | Brick veneer | > Electrical Phase: | 3-Phase 480 volt |
| > Clear Height: | 28' | > Roof: | New 45 Mil TPO roof with 20 year warranty |
| > Dock Doors: | 8 (8'x10') | | |
| > Drive-in Doors: | 1 (10'x10') | | |

AGENT: PRESTON THOMAS, SIOR
901 375 4800 | EXT. 4908
MEMPHIS, TN
preston.thomas@colliers.com

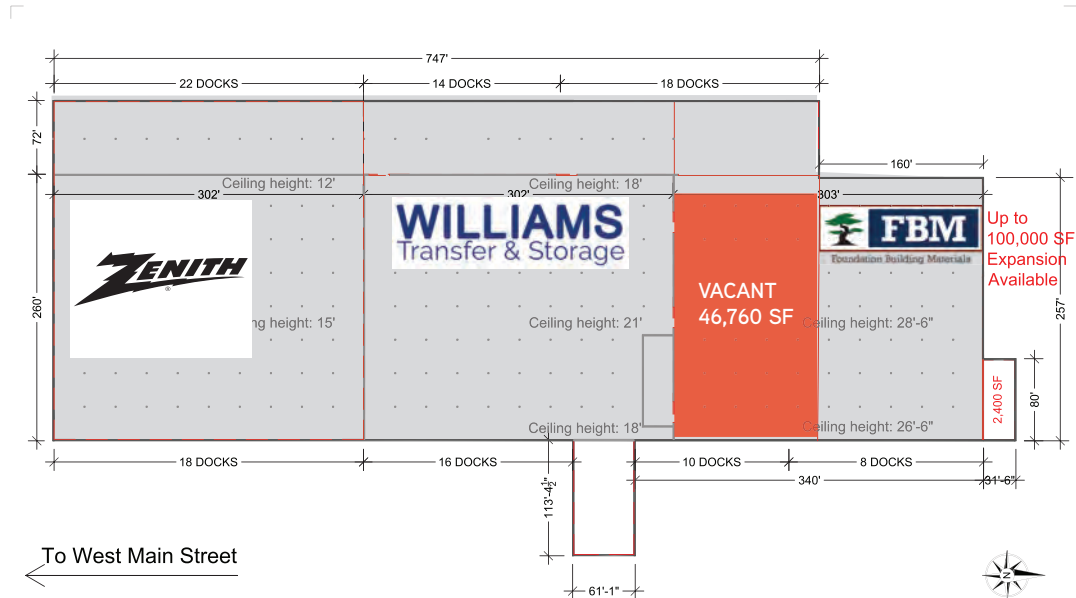
BRAD MURCHISON
901 375 4800 | EXT. 4917
MEMPHIS, TN
brad.murchison@colliers.com

COLLIERS INTERNATIONAL
6363 Poplar Avenue, Suite 220
Memphis, TN 38119
www.colliers.com/memphis

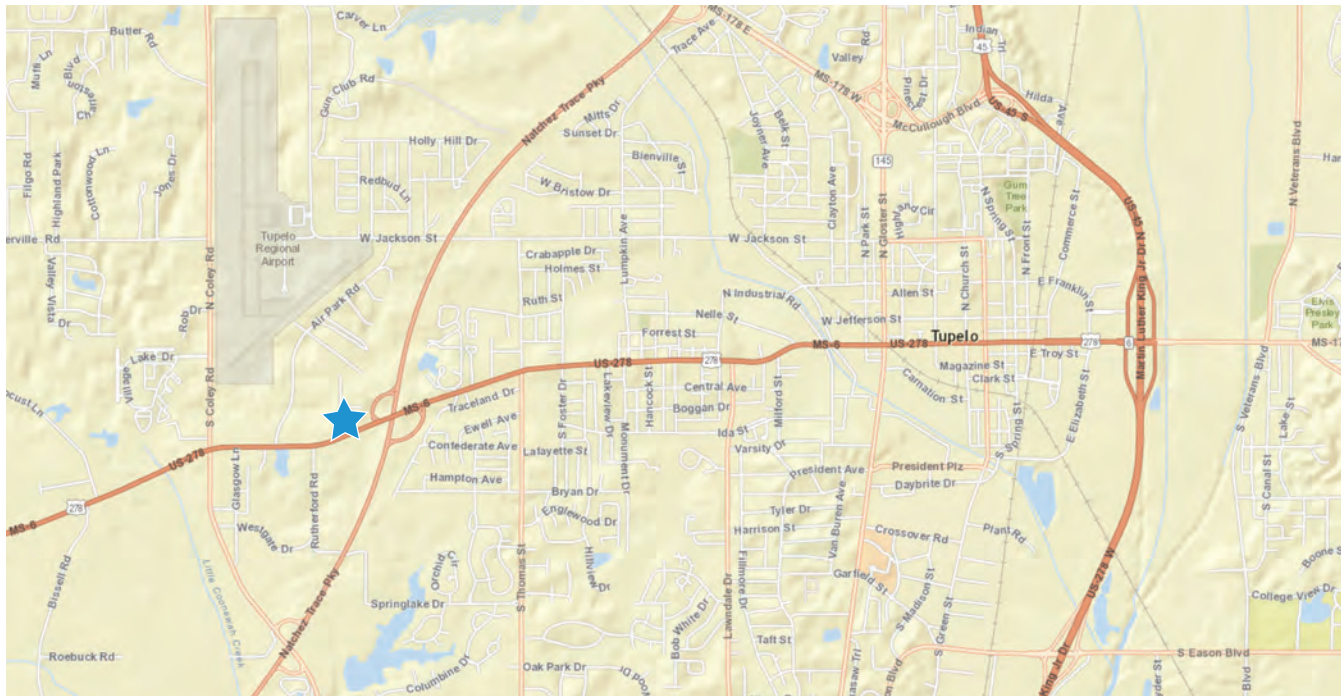
AVAILABLE > 46,760 +/- SF

3406 West Main Street

Facility Layout



Location Map



AGENT: PRESTON THOMAS, SIOR
901 375 4800 | EXT. 4908
MEMPHIS, TN
preston.thomas@colliers.com

BRAD MURCHISON
901 375 4800 | EXT. 4917
MEMPHIS, TN
brad.murchison@colliers.com

COLLIERS INTERNATIONAL
6363 Poplar Avenue, Suite 220
Memphis, TN 38119
www.colliers.com/memphis