

Livonia Executive Center

31572 Industrial Rd, Livonia, MI 48150



Listing ID: 30172392
Status: Active
Property Type: Office For Lease
Office Type: Business Park, Executive Suites
Contiguous Space: 7,450 SF
Total Available: 7,450 SF
Lease Rate: \$9 PSF (Annual)
Base Monthly Rent: \$5,587
Lease Type: NNN
Ceiling: 16 ft.



Overview/Comments

Outstanding office/flex space located in the attractive Livonia Executive Center with easy access to I-96 and I-275. Building has been recently refurbished. Space includes a shared truck well loading dock and drive thru door. Large tinted windows surround the perimeter. Large open collaboration area allows for flexible floor plan. 8 private offices, conference room, two restrooms, kitchenette & lunch room can seat 30 people, copier room, significant storage area. Separate employee entrance. 400 AMP power, Key fob security system, 25 – 30 car designated parking spaces, new roof installed 2015. Beautiful landscaping in well maintained facility. Owner is receptive to a 3 year lease.

More Information Online

<http://www.cpix.net/listing/30172392>

QR Code

Scan this image with your mobile device:



General Information

Taxing Authority:	City of Livonia	Class of Space:	Class C
Tax ID/APN:	105 02 0002 003	Gross Building Area:	40,420 SF
Office Type:	Business Park, Executive Suites, Flex Space, Office Building	Building/Unit Size (RSF):	7,450 SF
Building Name:	Livonia Executive Park	Usable Size (USF):	7,450 SF

Available Space

Suite/Unit Number:	200	Date Available:	09/07/2016
Suite Floor/Level:	1st Floor	Lease Term (Months):	60 Months
Space Available:	7,450 SF	Lease Rate:	\$9 PSF (Annual)
Minimum Divisible:	7,450 SF	Lease Type:	NNN
Maximum Contiguous:	7,450 SF	Parking Spaces:	25
Space Type:	New		

Area & Location

Property Visibility:	Excellent
----------------------	-----------

Building Related

Number of Stories:	1	Parking Type:	Surface
Year Built:	1988	Total Parking Spaces:	25
Roof Type:	Flat	Ceiling Height:	16

Land Related

Legal Description PT OF LOT 2 LIVONIA EXECUTIVE PARK NO 1 PT OF NE 1/4 SEC 27 T1S 9E DESC AS COMM AT NE COR SEC 27 S 02D 33M 19S E 874.15 FT TH S 88D 2M 01S W 495.0 FT TO POB TH S 88D 12M 01S W 191.80 FT TH N 01D 47M 59S W 365.96 FT TH N 88D 12M 01S E 268.98 FT TH S 02D 33M 19S E 10.0 FT TH S 88D 12M 01S W 82.0 FT TH S 02D 33M 19S E 156.01 FT TO POB 1.986 AC SUBJECT TO EASEMENTS OF RECORD

Location

Address: 31572 Industrial Rd, Livonia, MI 48150
County: Wayne

MSA: Detroit-Warren-Dearborn
Submarket: Southern I-275 Corridor



Property Images



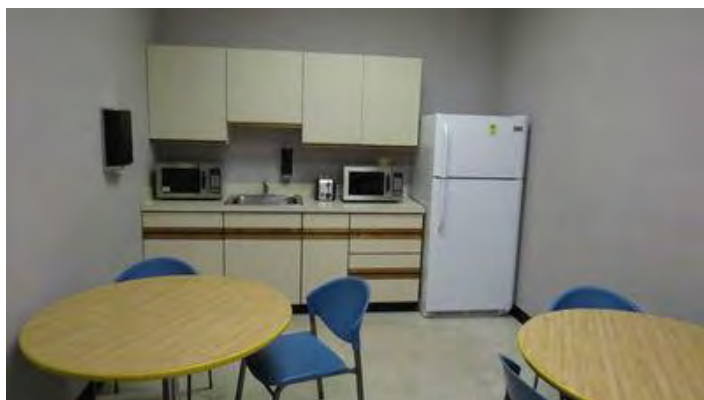
Exterior 2



Kitchenette



Exterior



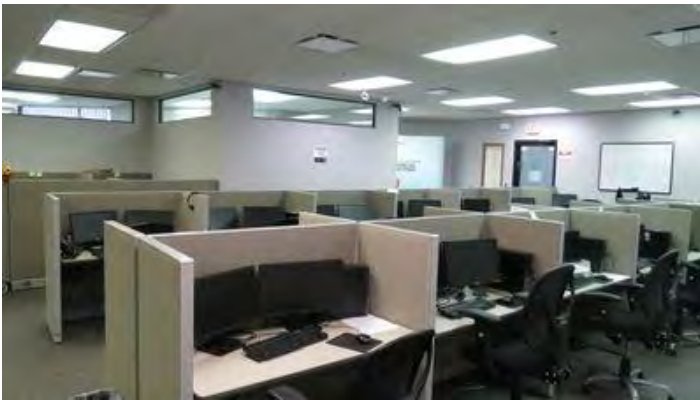
Kitchenette 2



Open Flex 1



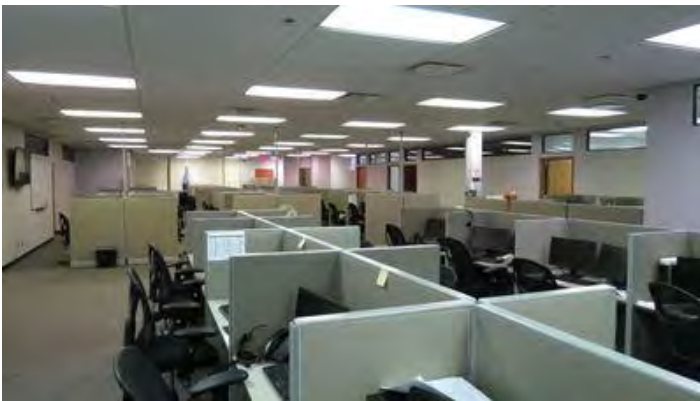
Bay Door



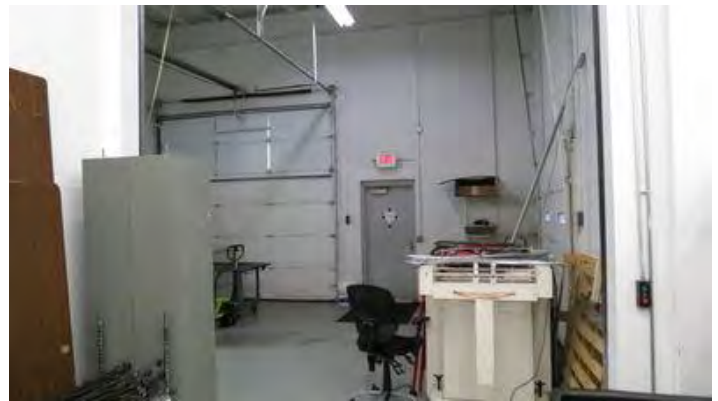
Open Flex 2



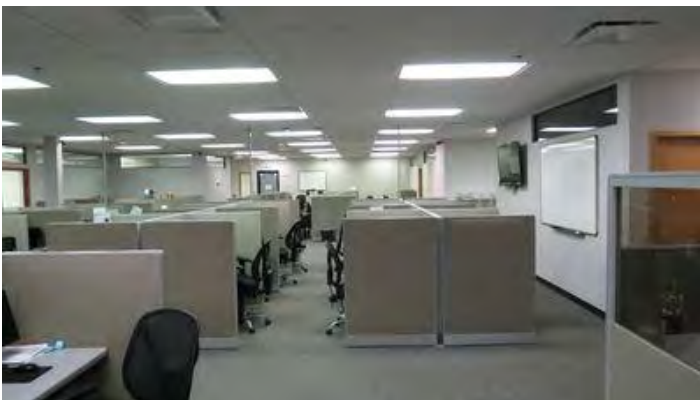
Loading & Bay Door



Open Flex 3



Loading area



Open Flex 4



Livonia Executive Center



31572 Industrial Road Livonia_Floor Plan

Property Contacts



James H. Chaconas

Colliers International
734-994-3100 [O]
jim.chaconas@colliers.com

