

FOR LEASE > RETAIL

SHELDON PLACE

15077 - 15185 SHELDON ROAD | PLYMOUTH, MICHIGAN
44601 - 44785 FIVE MILE ROAD | PLYMOUTH, MICHIGAN



SERVICES HIGH INCOME PLYMOUTH & NORTHVILLE AREA

> PROPERTY HIGHLIGHTS

- Available Unit:
44707 Five Mile Road - 1, 585 SF
- Three Mile Daytime Population = 45,000
- Excellent Visibility to Both Sheldon & Five Mile
- Join: Busch's Marketplace, Dickey's BBQ, Bliss Salon, GNC, Mother's Pizza, Biggby Coffee, Great Clips, Leo's Coney Island, Einstein Bagels and More

DEMOGRAPHICS

	1 MILE	3 MILE	5 MILE
POPULATION	3,121	58,484	160,115
AVG. INCOME	\$205,017	\$122,714	\$117,038
HOUSEHOLDS	1,222	25,595	66,150

COLLIERS INTERNATIONAL
2 Corporate Drive | Suite 300
Southfield, Michigan 48076

For More Information Call:

LOU FRANGO
PHONE 248 540 1000 EXT 1678
EMAIL lou.frango@colliers.com



colliers.com/detroit



FOR LEASE > RETAIL

SHELDON PLACE

15077 - 15185 SHELDON ROAD | PLYMOUTH, MICHIGAN
44601 - 44785 FIVE MILE ROAD | PLYMOUTH, MICHIGAN



> SITE PLAN



LOU FRANGO
PHONE 248 540 1000 EXT 1678
EMAIL lou.frango@colliers.com



COLLIERS INTERNATIONAL
2 Corporate Dr. | Suite 300
Southfield, Michigan 48076

FOR LEASE > RETAIL

SHELDON PLACE

15077 - 15185 SHELDON ROAD | PLYMOUTH, MICHIGAN
44601 - 44785 FIVE MILE ROAD | PLYMOUTH, MICHIGAN



> PROPERTY PHOTOS



LOU FRANGO
PHONE 248 540 1000 EXT 1678
EMAIL lou.frango@colliers.com



COLLIERS INTERNATIONAL
2 Corporate Dr. | Suite 300
Southfield, Michigan 48076

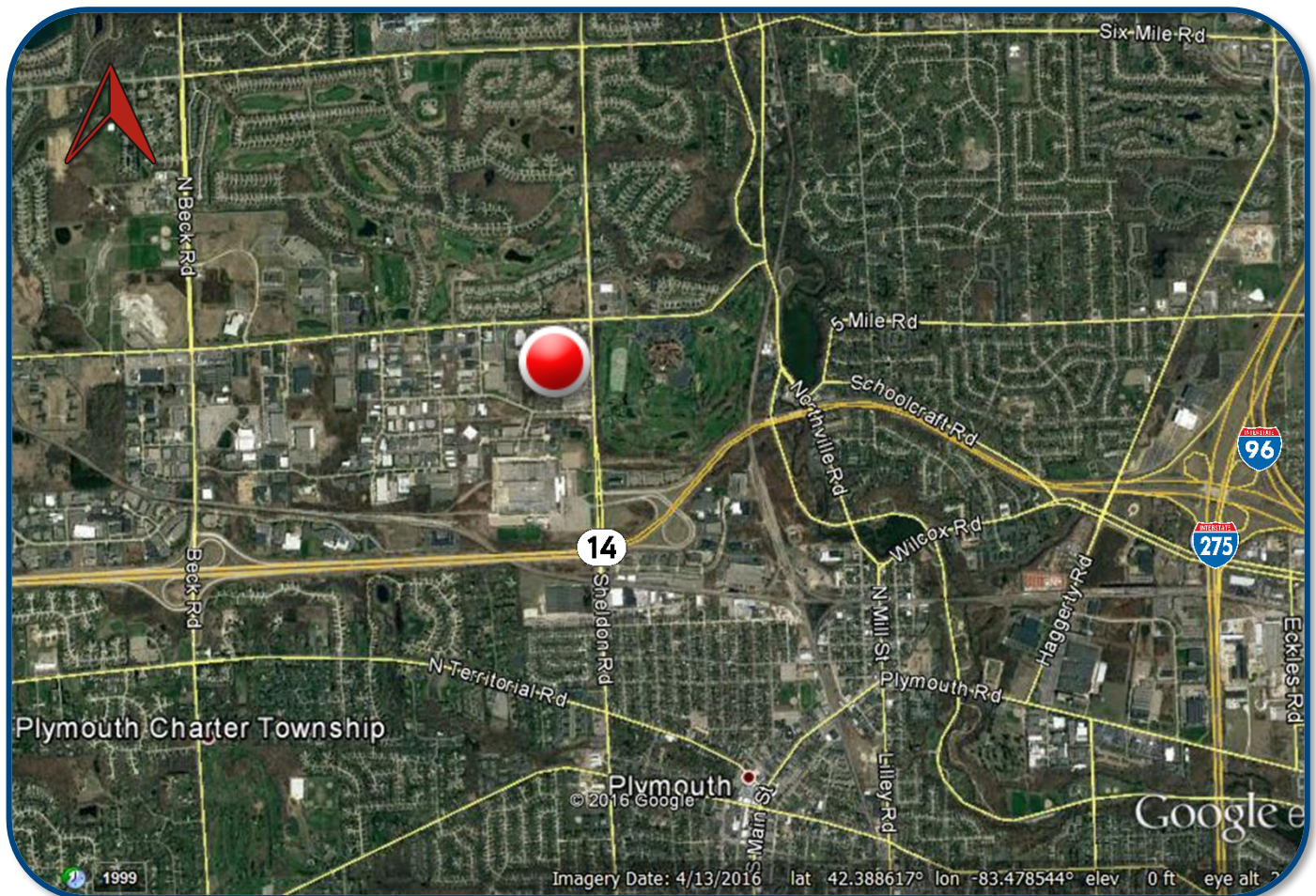
FOR LEASE > RETAIL

SHELDON PLACE

15077 - 15185 SHELDON ROAD | PLYMOUTH, MICHIGAN
44601 - 44785 FIVE MILE ROAD | PLYMOUTH, MICHIGAN



> HIGH VIEW AERIAL



LOU FRANGO
PHONE 248 540 1000 EXT 1678
EMAIL lou.frango@colliers.com



COLLIERS INTERNATIONAL
2 Corporate Dr. | Suite 300
Southfield, Michigan 48076

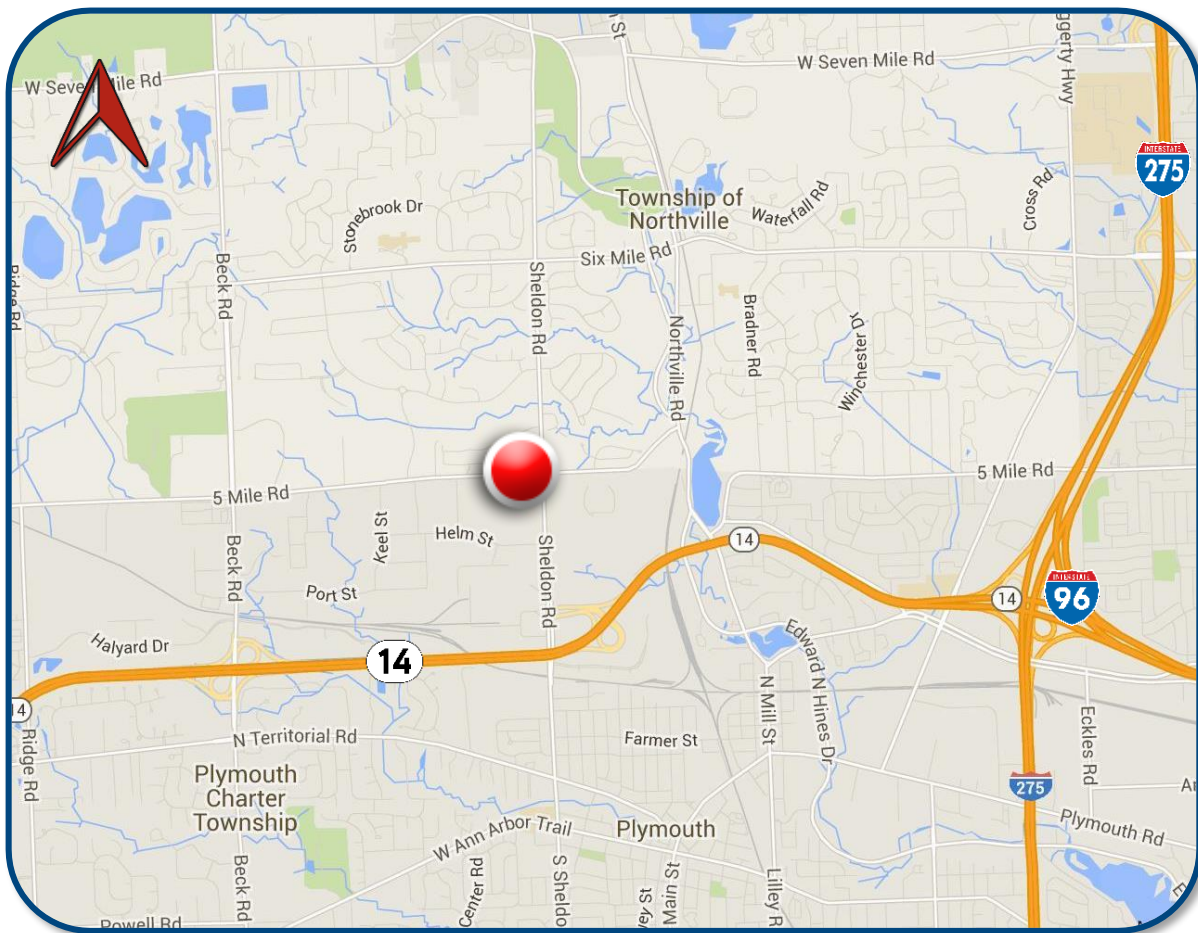
FOR LEASE > RETAIL

SHELDON PLACE

15077 - 15185 SHELDON ROAD | PLYMOUTH, MICHIGAN
44601 - 44785 FIVE MILE ROAD | PLYMOUTH, MICHIGAN



> LOCATION MAP



LOU FRANGO
PHONE 248 540 1000 EXT 1678
EMAIL lou.frango@colliers.com



COLLIERS INTERNATIONAL
2 Corporate Dr. | Suite 300
Southfield, Michigan 48076

FOR LEASE > RETAIL

SHELDON PLACE

15077 - 15185 SHELDON ROAD | PLYMOUTH, MICHIGAN
44601 - 44785 FIVE MILE ROAD | PLYMOUTH, MICHIGAN



> AREA MERCHANT MAP



LOU FRANGO
PHONE 248 540 1000 EXT 1678
EMAIL lou.frango@colliers.com



COLLIERS INTERNATIONAL
2 Corporate Dr. | Suite 300
Southfield, Michigan 48076

SUMMARY PROFILE

2000-2010 Census, 2016 Estimates with 2021 Projections

Calculated using Weighted Block Centroid from Block Groups



Lat/Lon: 42.3944/-83.4815

RS1

Five Mile & Sheldon - Sheldon Place

Plymouth, MI 48170

1 mi radius 3 mi radius 5 mi radius

POPULATION	2016 Estimated Population	3,121	58,484	160,115
	2021 Projected Population	3,029	56,616	156,139
	2010 Census Population	3,180	59,168	160,775
	2000 Census Population	1,630	53,778	155,715
	Projected Annual Growth 2016 to 2021	-0.6%	-0.6%	-0.5%
	Historical Annual Growth 2000 to 2016	5.7%	0.5%	0.2%
	2016 Median Age	43.6	42.2	42
HOUSEHOLDS	2016 Estimated Households	1,222	25,595	66,150
	2021 Projected Households	1,222	25,499	66,336
	2010 Census Households	1,193	24,886	63,970
	2000 Census Households	666	21,702	59,542
	Projected Annual Growth 2016 to 2021	-	-0.1%	0.1%
	Historical Annual Growth 2000 to 2016	5.2%	1.1%	0.7%
RACE AND ETHNICITY	2016 Estimated White	81.0%	83.3%	80.9%
	2016 Estimated Black or African American	5.8%	6.9%	8.2%
	2016 Estimated Asian or Pacific Islander	10.8%	7.5%	8.4%
	2016 Estimated American Indian or Native Alaskan	0.1%	0.2%	0.2%
	2016 Estimated Other Races	2.2%	2.2%	2.3%
	2016 Estimated Hispanic	2.7%	2.8%	2.9%
INCOME	2016 Estimated Average Household Income	\$205,017	\$122,714	\$117,038
	2016 Estimated Median Household Income	\$161,490	\$100,314	\$96,429
	2016 Estimated Per Capita Income	\$80,300	\$53,729	\$48,399
EDUCATION (AGE 25+)	2016 Estimated Elementary (Grade Level 0 to 8)	0.6%	1.0%	1.5%
	2016 Estimated Some High School (Grade Level 9 to 11)	2.6%	2.6%	2.9%
	2016 Estimated High School Graduate	9.9%	15.6%	17.2%
	2016 Estimated Some College	13.4%	17.2%	19.3%
	2016 Estimated Associates Degree Only	9.6%	8.2%	8.6%
	2016 Estimated Bachelors Degree Only	29.0%	29.4%	28.4%
	2016 Estimated Graduate Degree	35.0%	26.1%	22.0%
BUSINESS	2016 Estimated Total Businesses	235	3,360	7,766
	2016 Estimated Total Employees	6,844	44,732	106,796
	2016 Estimated Employee Population per Business	29.1	13.3	13.8
	2016 Estimated Residential Population per Business	13.3	17.4	20.6

This report was produced using data from private and government sources deemed to be reliable. The information herein is provided without representation or warranty.