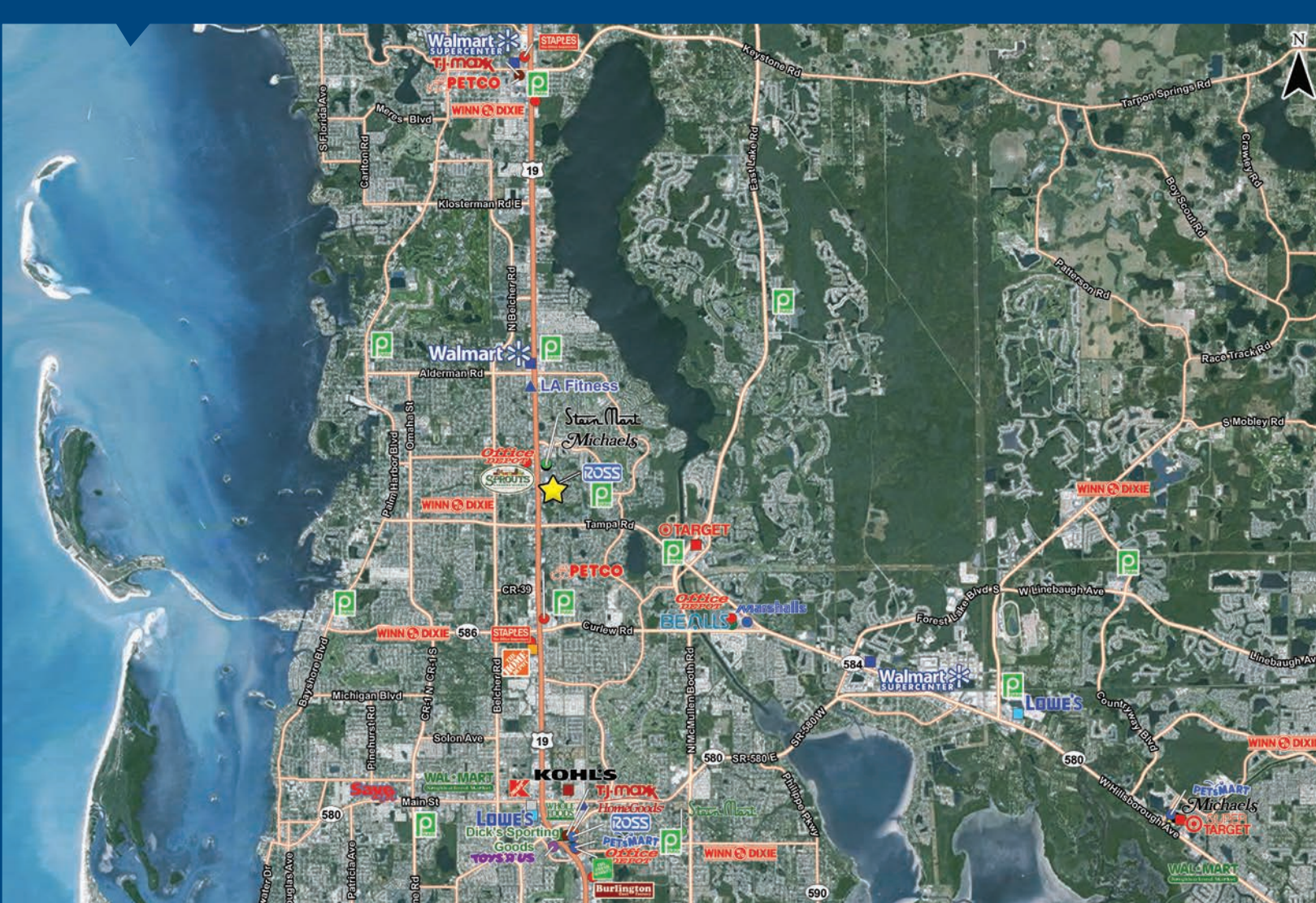
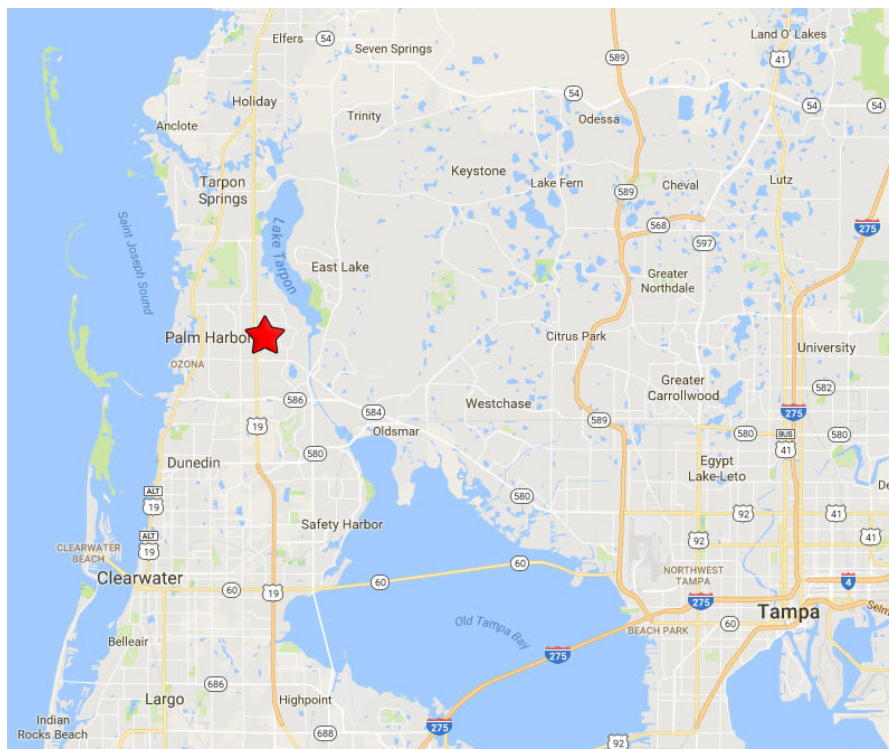


Coral Landings

33119-33343 US Highway 19 North, Palm Harbor, FL 34684



Location Map



Contact Us

LISA McCAFFREY
Executive Managing Director
Retail Services
813 871 8519
lisa.mccaffrey@colliers.com

BRITNEY MROCZKOWSKI, CCIM
Senior Associate
Retail & Land Services
813 871 8520
britneym@colliers.com

This document/email has been prepared by Colliers International for advertising and general information only. Colliers International makes no guarantees, representations or warranties of any kind, expressed or implied, regarding the information including, but not limited to, warranties of content, accuracy and reliability. Any interested party should undertake their own inquiries as to the accuracy of the information. Colliers International excludes unequivocally all inferred or implied terms, conditions and warranties arising out of this document and excludes all liability for loss and damages arising there from. This publication is the copyrighted property of Colliers International and /or its licensor(s). © 2016. All rights reserved. This communication is not intended to cause or induce breach of an existing listing agreement.

Colliers INTERNATIONAL
4830 W. Kennedy Blvd., Suite 300
Tampa, FL 33609
813 221 2290
www.colliers.com

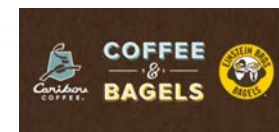


ROSS
DRESS FOR LESS



Sola
SALON STUDIOS

Banfield
PET HOSPITAL



PLATO'S
CLOSET

- 1,500 - 5,625 SF Available
- Dynamic Palm Harbor Trade Area
- 77,500+ Daily Traffic Count on US Highway 19
- National tenant mix including Publix, Ross, Chipotle, Plato's Closet, Sola Salons, Sally's Beauty, H&R Block, and Huntington Learning Center
- Densely Populated, Affluent Trade Area
- Established US 19 location, South of Nebraska

LISA McCAFFREY
Executive Managing Director
Retail Services
813 871 8519
lisa.mccaffrey@colliers.com

BRITNEY MROCZKOWSKI, CCIM
Senior Associate
Retail & Land Services
813 871 8520
britneym@colliers.com



Availabilities



SUITE #	TENANT	SF
A-1	China One	1,200
A-2	Chiropractor	1,200
A-3	Liquor Store	1,559
A-4	Publix	65,498
B1-3	Sola Salons Studios	5,200
B-4	GNC	1,200
B5-A	Banfield Pet Hospital	4,375
B5-B	Available	5,625
C1-2	Huntington Learning Centers	2,400
C3	Carvel	1,000
C4-5	Plato's Closet	5,000
D-1	H&R Block	1,275
D-2	Nail Salon	1,700
D3-4	SAS - San Antonio Shoemaker	2,550
D-5	Sally Beauty Supply	1,728
D-6	Ross Dress for Less	26,170
E-1	Available Soon	1,831
E-2	Edible Arrangements	1,125
E-3	Extreme Pizza	1,500
E4-5	Available	2,250
E6-7	Einstein Bagel/Caribou Coffee	2,625
OP-B	Checkers	720
OP-C	Boston Market	3,103
OP-D1	Available	1,500
OP-D2	Chipotle	3,000



US Highway 19



Coral Landings Boulevard