



Accelerating success.



675
OAK RIDGE EAST
 Minnesota Oncology
 TWIN CITIES SPINE CENTER
 Ms. Lung Cl. / Ms. Sleep Inst.
 The Dental Specialists
 Minnesota Head & Neck Pain Clinic
 Health Resources Immunotherapy Clinic
 RAYUS Radiology
 Hanger Prosthetics & Orthotics
 Park Nicollet Behavioral Health
 Malrose Center

Oakridge East Professional Building

675 Nicollet Boulevard East | Burnsville, MN

Medical / Office Space For Lease

Brian Bruggeman CCIM, SIOR
 Senior Vice President
 +1 952 837 3079
 brian.bruggeman@colliers.com

Louis Suarez CCIM, SIOR
 Senior Vice President
 +1 952 837 3061
 louis.suarez@colliers.com

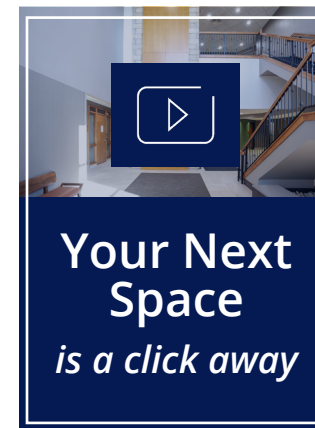
Misty Bowe CCIM
 Senior Vice President
 +1 952 897 7713
 misty.bowe@colliers.com

1600 Utica Avenue South
 Suite 300
 Minneapolis, MN 55416
 P: +1 952 897 7700

Property Profile



- Beautiful medical facility in the Burnsville area
- Easy access to I-35W and I-35E
- Close to the Fairview Ridges Campus
- Reserved, unground executive parking available
- Climate-controlled storage available
- Close proximity to area retail and dining
- Common area upgrades completed in 2024



Building Information

Address	675 Nicollet Boulevard East, Burnsville, MN
Building Size	52,391 SF
Year Built	2001
Floors	Two (2)
Parking	213 surface stalls + 58 executive parking stalls Ratio 4.86 / 1,000
Available Space	Suite 225: 1,046 SF - Available Immediately Suite 230: 3,646 SF - Available Immediately* Suite 245: 1,504 SF - Available Immediately Suite 250: 6,747 SF - Available Immediately* Suite 260: 2,210 SF - Available 4/13/2027 <i>*Suites 230 & 250 can be combined for 10,393 SF contiguous</i>
Net Rental Rates	Negotiable
2026 Tax & CAM	\$11.18 PSF Operating Expenses <u>\$ 5.82 PSF Taxes</u> \$17.00 PSF Total

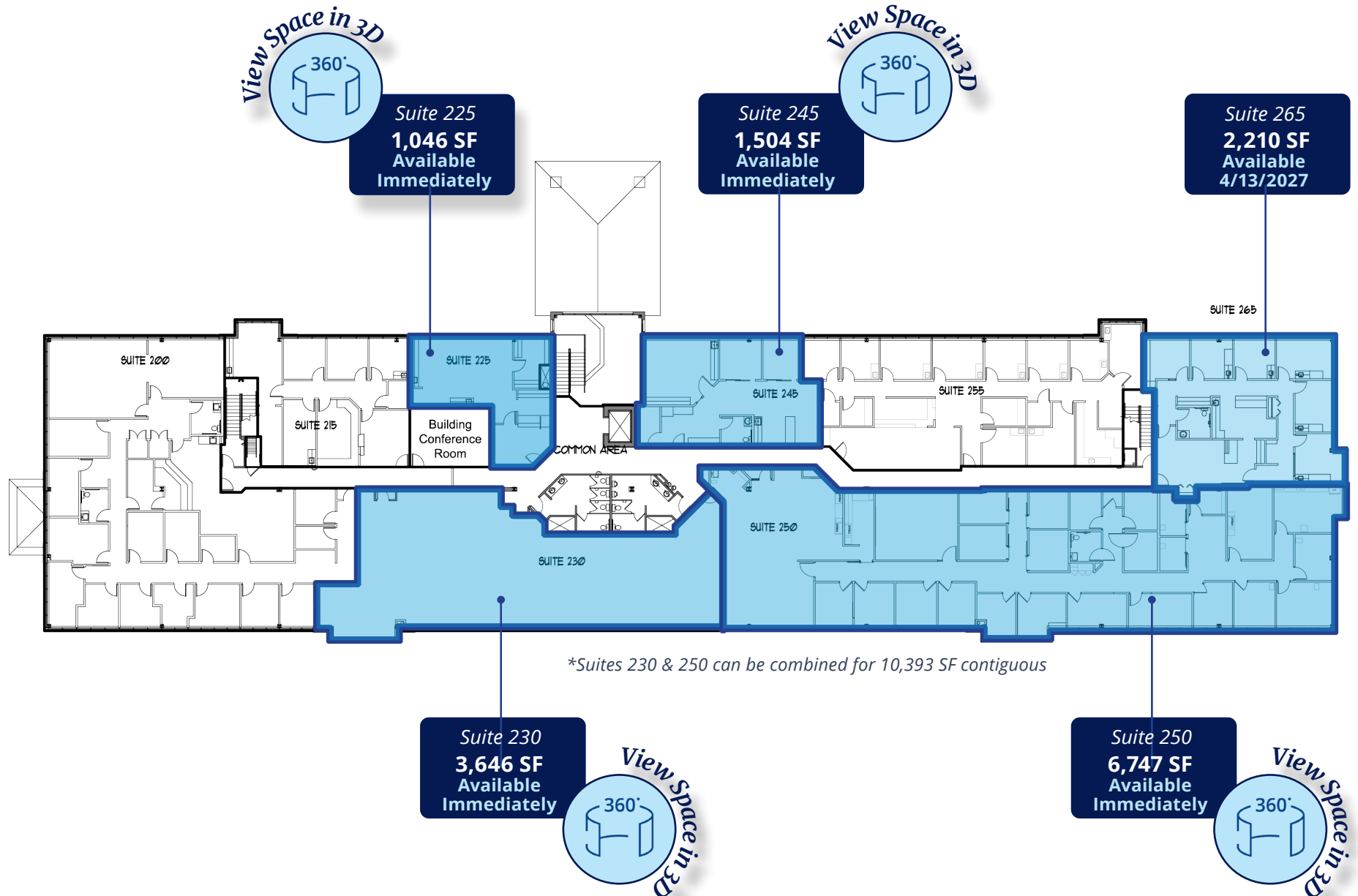


Stacking Plan



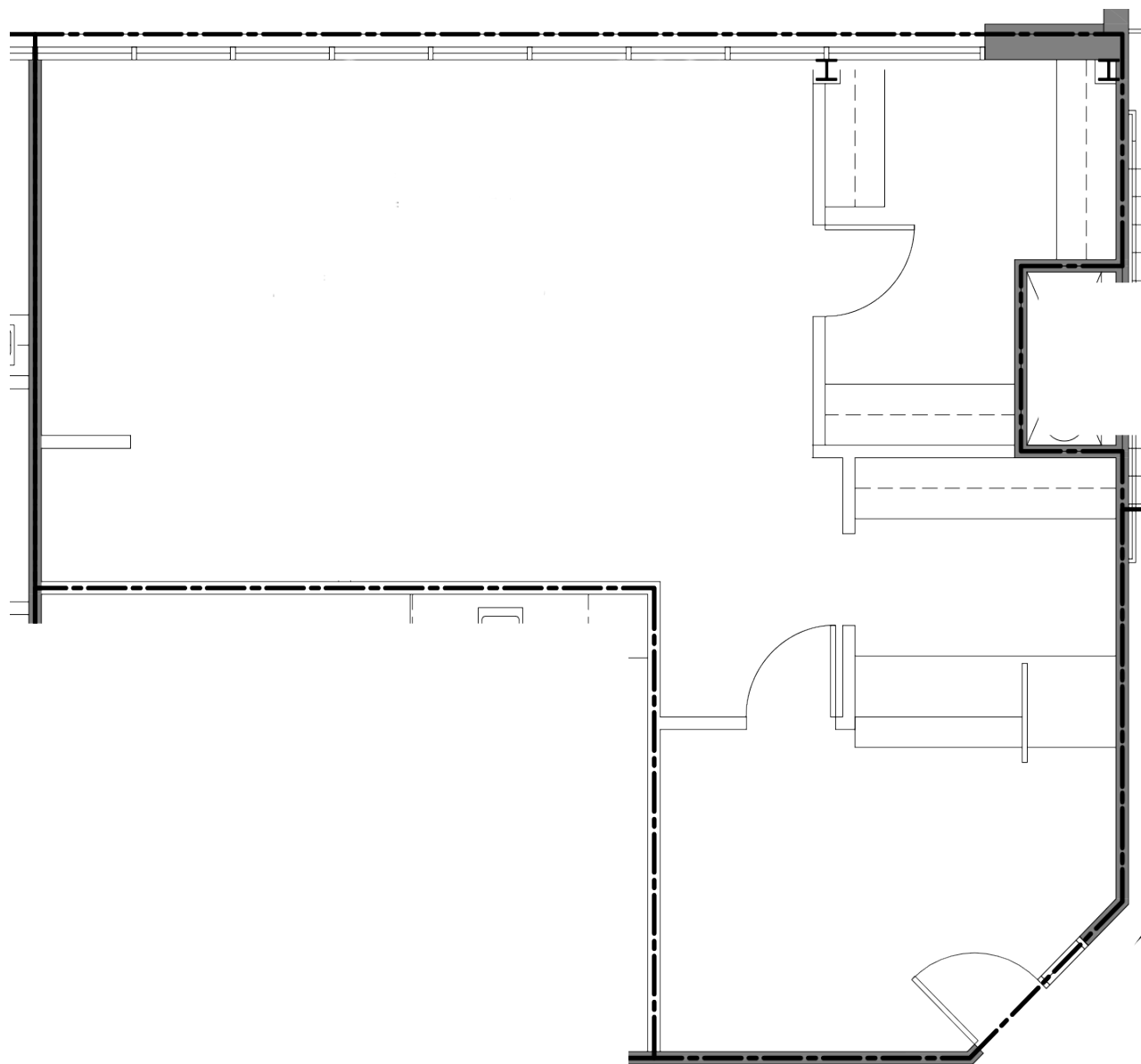
Floor Plan

Second Floor



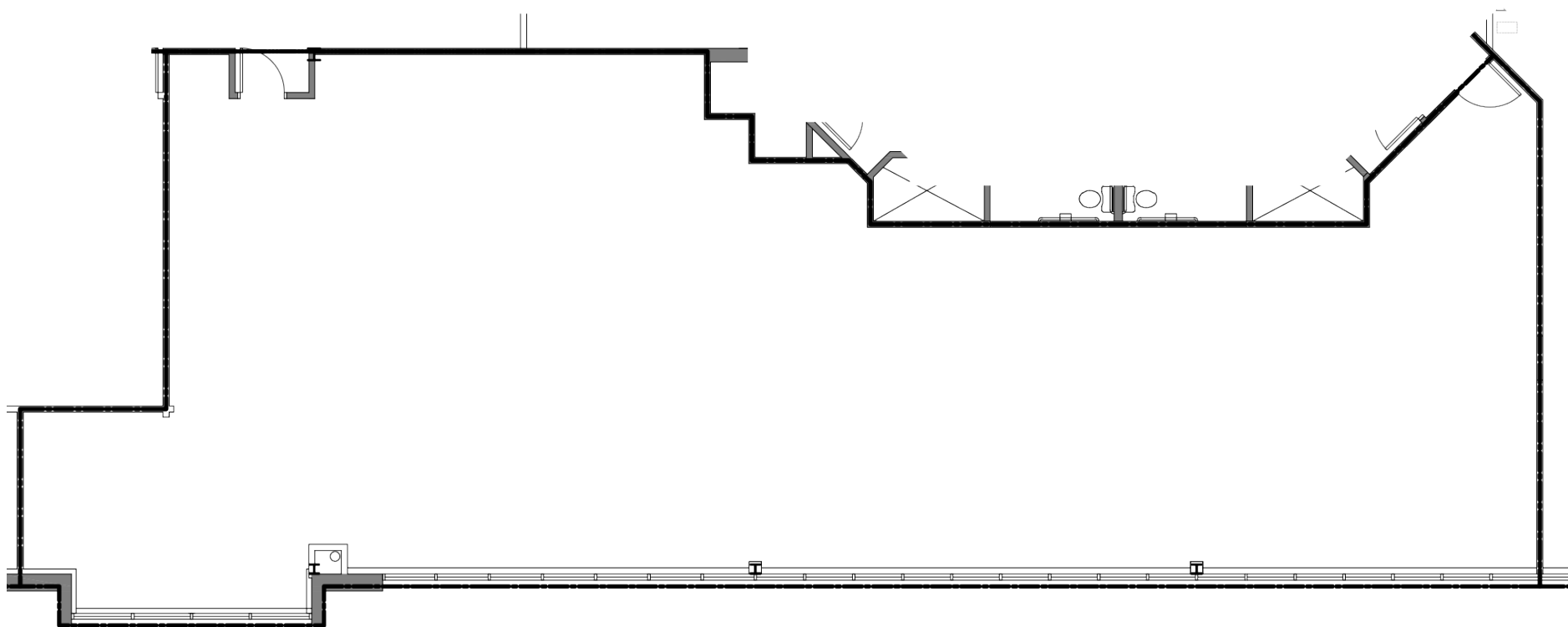
Floor Plan

Suite 225
1,046 SF



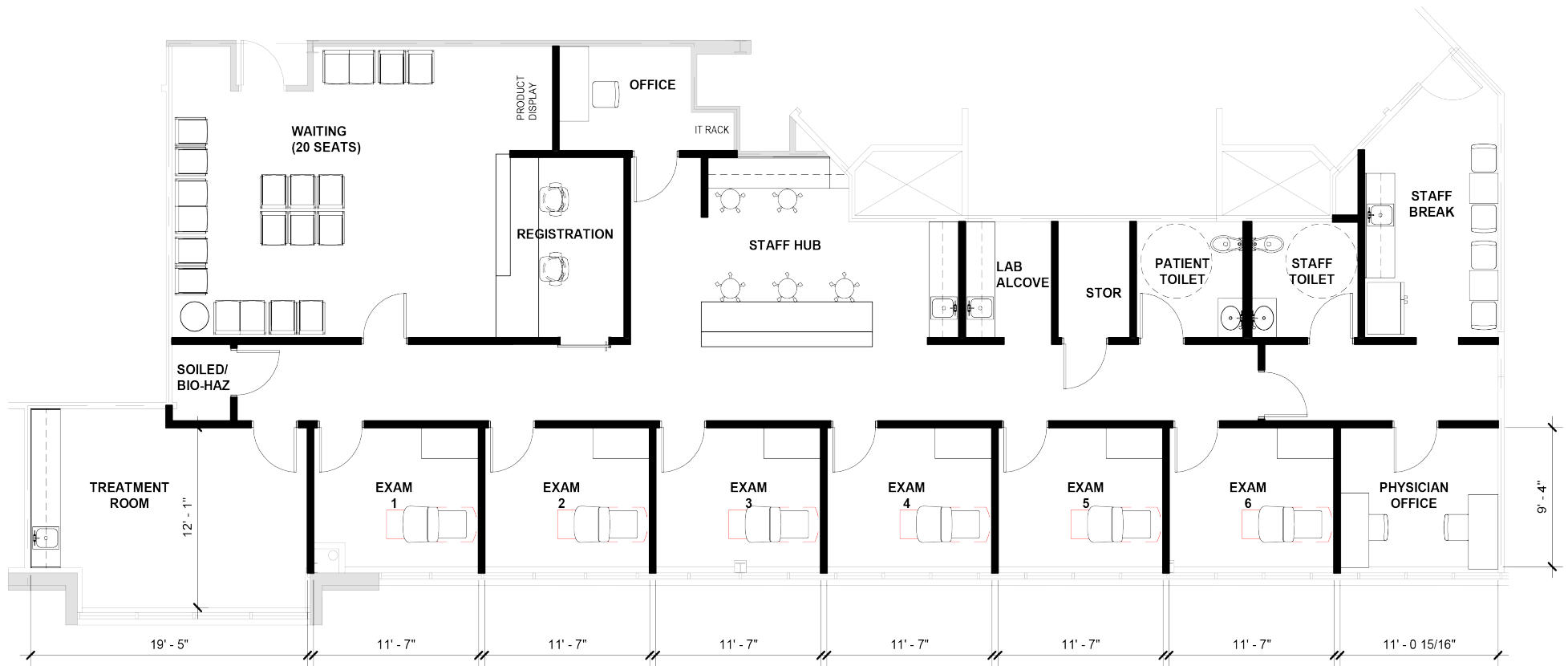
Floor Plan

Suite 230
3,646 SF



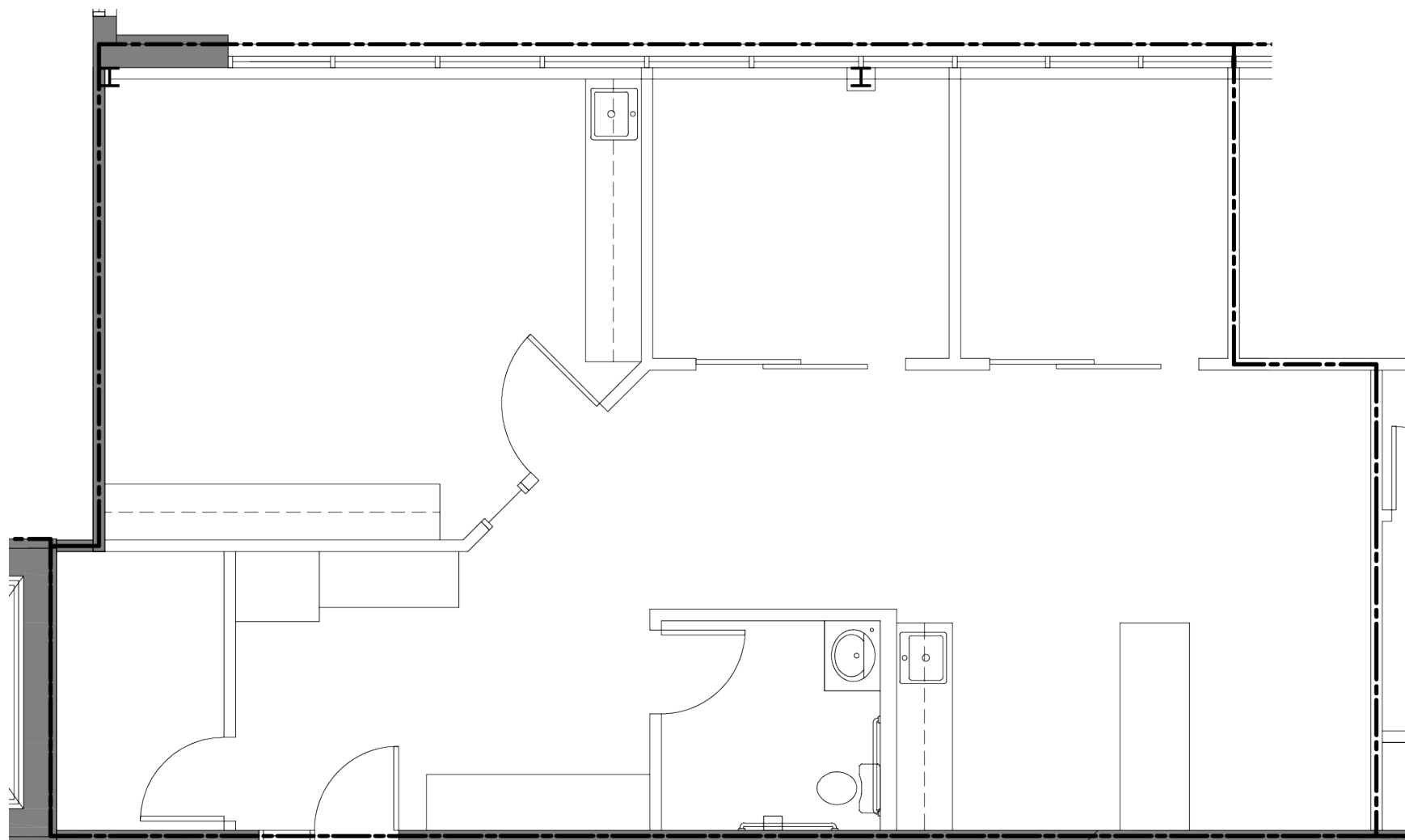
Floor Plan

Suite 230 - Test Fit Plan 3,646 SF



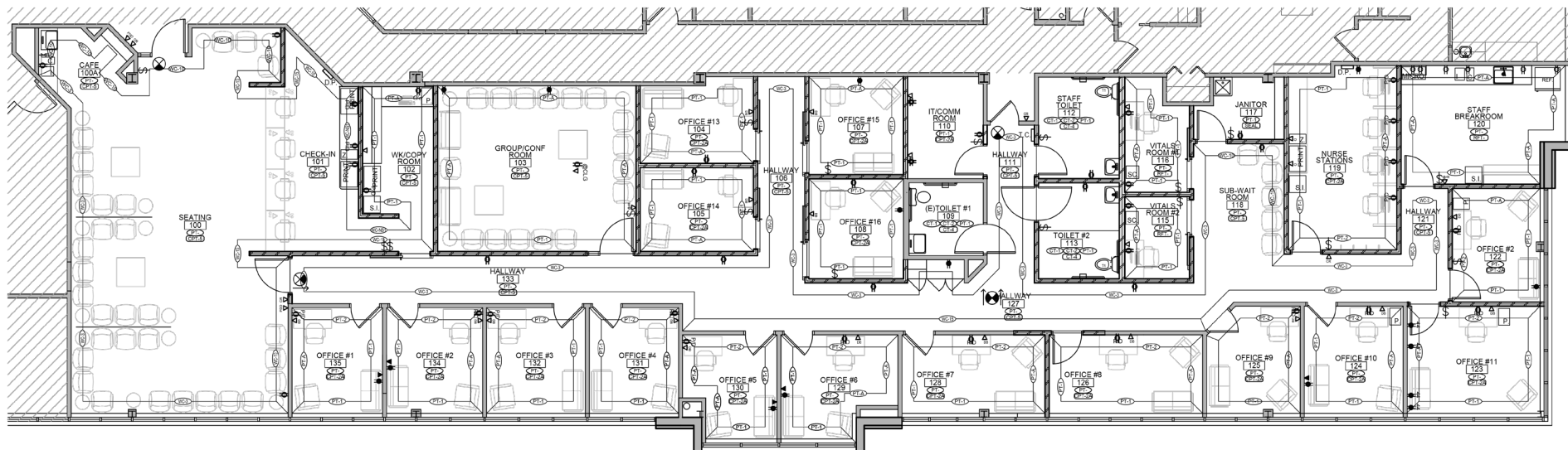
Floor Plan

Suite 245
1,504 SF

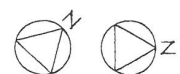
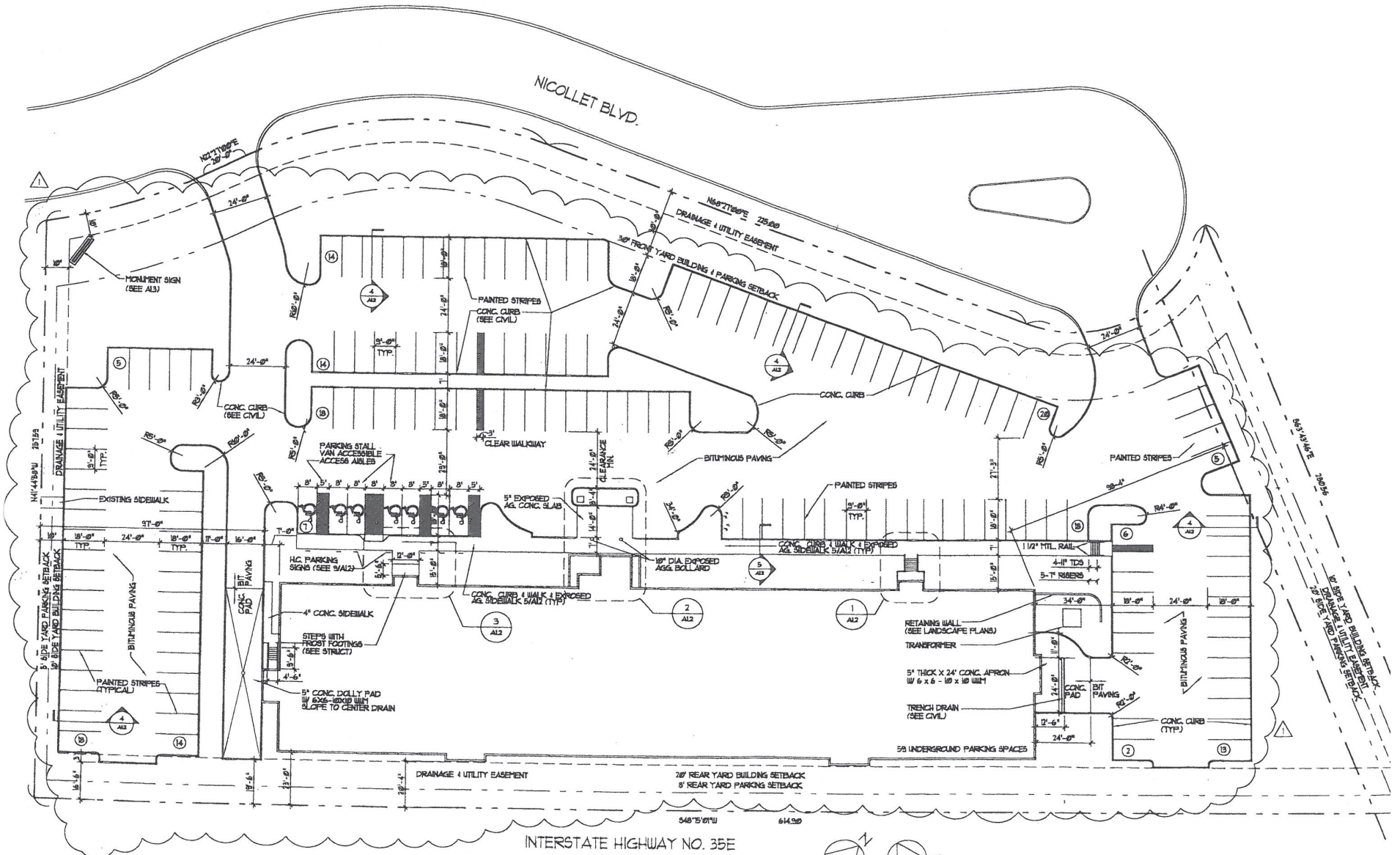


Floor Plan

Suite 250
6,747 SF

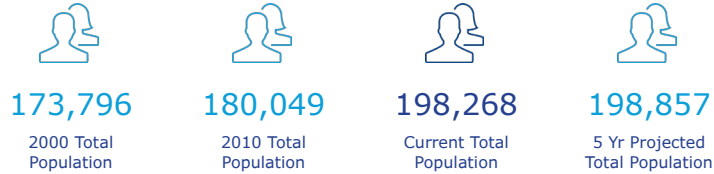


Site Plan

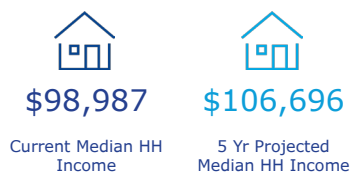


Population, Income & Housing Trend

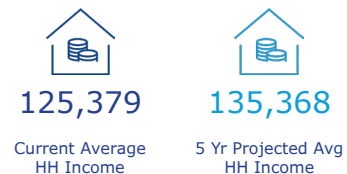
Population Trend



Median Household Income



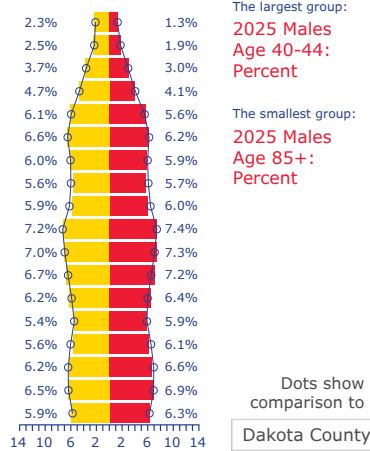
Average Household Income



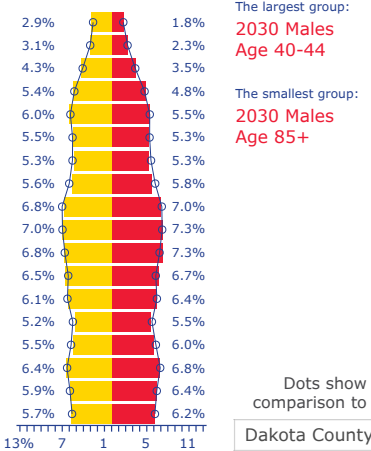
Per Capita Income



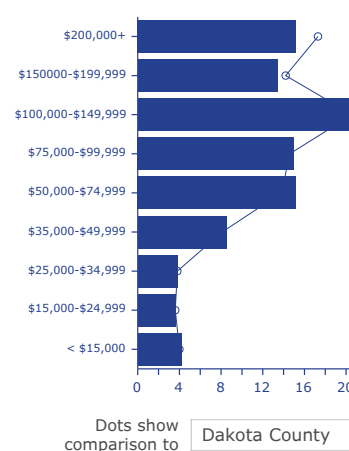
Current Age Pyramid



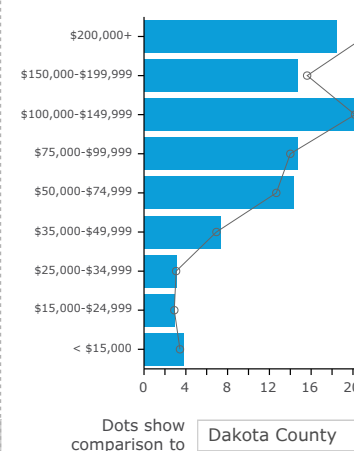
5 Yr Projected Age Pyramid



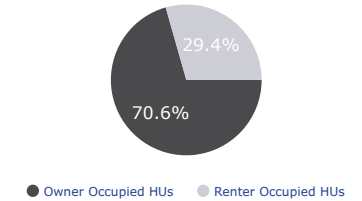
Current HH By Income



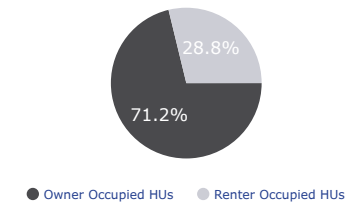
5 Yr Projected HH By Income



Current Housing By Ownership



5 Yr Projected Housing By Ownership



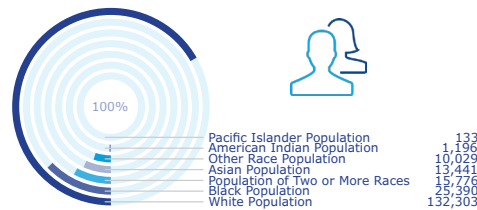
2025 Race and ethnicity (Esri)

The largest group: White Alone (66.73)
The smallest group: Pacific Islander Alone (0.07)

Indicator ▲	Value	Diff
White Alone	66.73	-5.57
Black Alone	12.81	+3.97
American Indian/Alaska Native Alone	0.60	+0.01
Asian Alone	6.78	+0.87
Pacific Islander Alone	0.07	+0.02
Other Race	5.06	+0.61
Two or More Races	7.96	+0.10
Hispanic Origin (Any Race)	9.27	+0.27

Bars show deviation from **Dakota County**

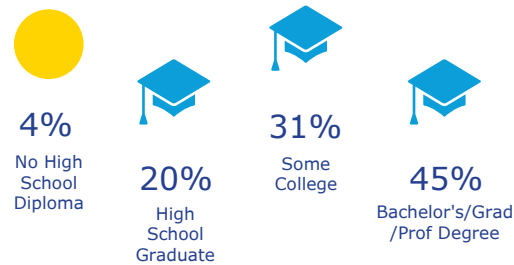
Current Year Population By Race



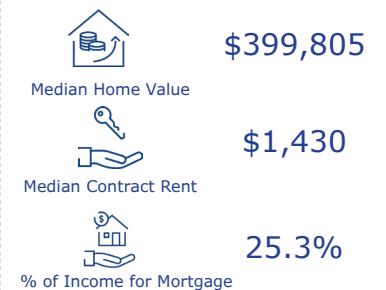
Current Annual Household Spending



EDUCATION



Current Year Housing Stats



675 Nicollet Blvd E, Burnsville, Minnesota, 55337
5 mile radius

Market Scenario Planner: Outpatient

Data and Analytics Market Scenario Planner - Outpatient						Annual Volume Estimates Based on 5 YR CAGR				
Service Line	2022 Volume	2027 Volume	2032 Volume	5 Yr Growth	10 Yr Growth	5 YR Compound Annual Growth Rate (CAGR)	2023 Volume Estimate	2024 Volume Estimate	2025 Volume Estimate	2026 Volume Estimate
Endocrinology	946	1,187	1,370	25.4%	44.7%	4.63%	990	1036	1084	1134
Podiatry	6,498	7,717	8,923	18.8%	37.3%	3.50%	6724	6960	7203	7456
Spine	871	1,034	1,164	18.7%	33.7%	3.50%	901	932	965	999
Psychiatry	61,363	72,375	74,888	17.9%	22.0%	3.36%	63422	65550	67751	70024
Vascular	7,042	8,303	9,591	17.9%	36.2%	3.35%	7277	7521	7773	8033
Ophthalmology	37,768	44,023	50,221	16.6%	33.0%	3.11%	38943	40155	41405	42694
Physical Therapy/Rehabilitation	116,176	135,132	154,510	16.3%	33.0%	3.07%	119741	123416	127204	131108
Cardiology	41,617	48,309	54,005	16.1%	29.8%	3.03%	42876	44174	45511	46889
Pain Management	4,958	5,732	6,354	15.6%	28.2%	2.94%	5103	5254	5408	5567
Orthopedics	13,426	15,443	17,311	15.0%	28.9%	2.84%	13806	14198	14601	15016
Lab	193,218	221,001	245,790	14.4%	27.2%	2.72%	198480	203885	209438	215141
Miscellaneous Services	94,363	105,598	118,532	11.9%	25.6%	2.28%	96510	98706	100951	103248
Nephrology	2,383	2,639	2,857	10.7%	19.9%	2.06%	2432	2482	2533	2586
ENT	15,007	16,435	17,883	9.5%	19.2%	1.84%	15282	15562	15848	16139
Thoracic Surgery	239	260	272	8.5%	13.6%	1.65%	243	247	251	255
Evaluation and Management	458,670	496,852	549,070	8.3%	19.7%	1.61%	466064	473577	481212	488969
Oncology	6,878	7,418	7,944	7.9%	15.5%	1.52%	6982	7089	7197	7306
Radiology	132,255	142,552	155,085	7.8%	17.3%	1.51%	134253	136281	138340	140430
Trauma	3,350	3,605	3,892	7.6%	16.2%	1.48%	3399	3449	3500	3552
Gastroenterology	10,887	11,685	12,284	7.3%	12.8%	1.43%	11042	11199	11359	11521
Dermatology	19,754	21,159	22,520	7.1%	14.0%	1.38%	20027	20304	20585	20869
Urology	4,304	4,600	4,863	6.9%	13.0%	1.34%	4361	4420	4479	4539
Neurosurgery	416	443	483	6.5%	16.0%	1.28%	421	426	432	437
General Surgery	2,707	2,884	3,035	6.5%	12.1%	1.27%	2741	2776	2811	2847
Neurology	7,904	8,363	8,845	5.8%	11.9%	1.13%	7994	8084	8176	8268
Cosmetic Procedures	3,635	3,801	3,864	4.6%	6.3%	0.90%	3667	3700	3733	3767
Gynecology	4,297	4,366	4,536	1.6%	5.6%	0.32%	4310	4324	4338	4352
Pulmonology	6,470	6,290	6,095	-2.8%	-5.8%	-0.57%	6433	6397	6361	6325
Obstetrics	1,823	1,639	1,550	-10.1%	-15.0%	-2.11%	1784	1746	1709	1673

10 mile radius.

Source: The Outpatient Market Scenario Planner (MSP), as developed by the Advisory Board. MSP provides current and projected patient utilization estimates for specific specialties in key markets across the US. The MSP tool supports planners, providers and hospital executives to make intelligent business development and strategic decisions to locate or expand programs in targeted markets. For more information on the Advisory Board, please visit www.advisory.com.



Oakridge East Professional Building



1600 Utica Avenue South
 Suite 300
 Minneapolis, MN 55416
 P: +1 952 897 7700

This document has been prepared by Colliers International for advertising and general information only. Colliers International makes no guarantees, representations or warranties of any kind, expressed or implied, regarding the information including, but not limited to, warranties of content, accuracy and reliability. Any interested party should undertake their own inquiries as to the accuracy of the information. Colliers International excludes unequivocally all inferred or implied terms, conditions and warranties arising out of this document and excludes all liability for loss and damages arising there from. This publication is the copyrighted property of Colliers International and/or its licensor(s). ©2026. All rights reserved.