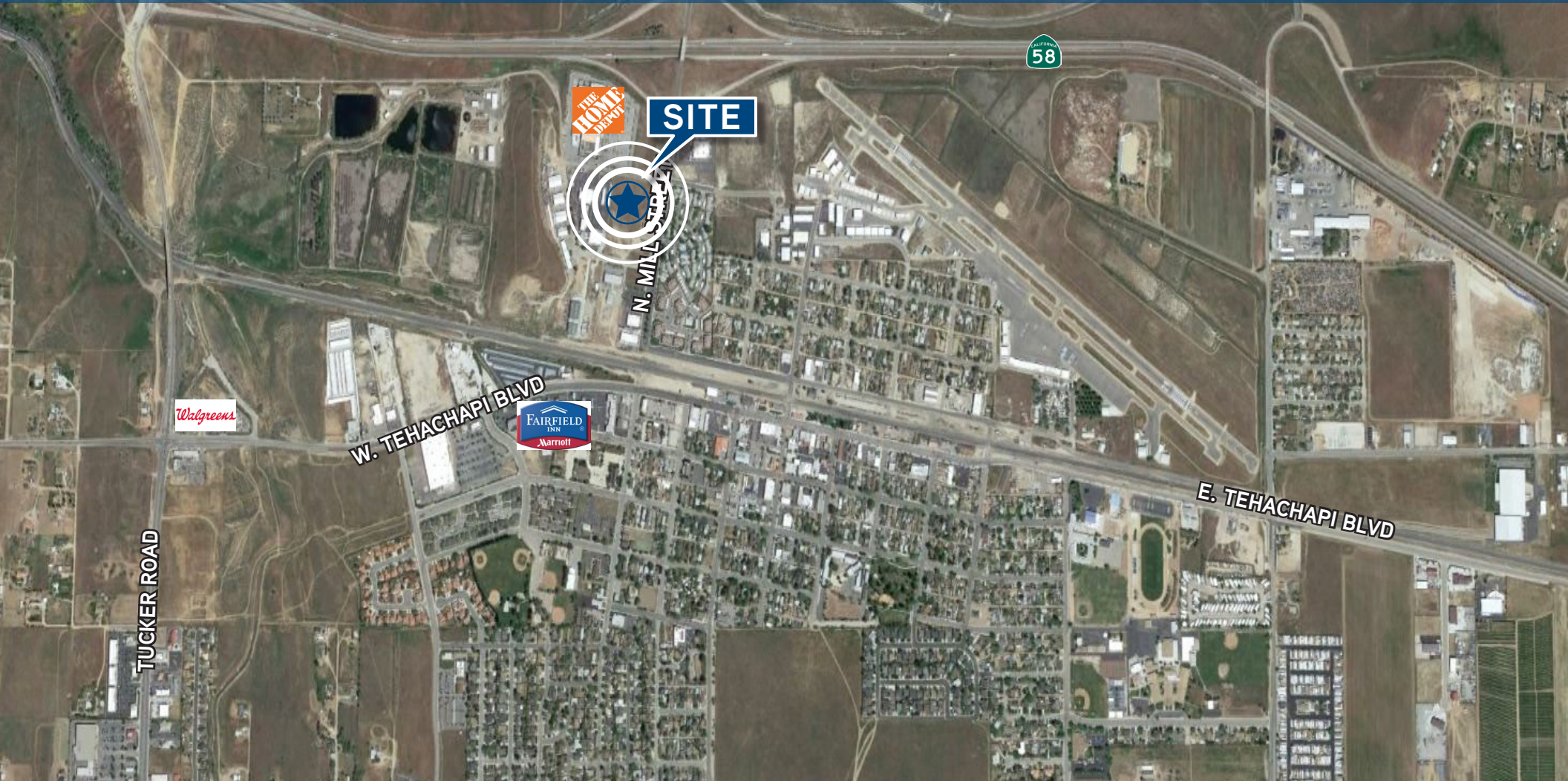


FOR SALE

HOME DEPOT OUT PARCEL

SWC HIGHWAY 58 & NORTH MILL STREET, TEHACHAPI, CA



AGENT: JOHN HALE
SENIOR VICE PRESIDENT | PRINCIPAL
RETAIL PROPERTIES TEAM
CENTRAL CALIFORNIA
661 631 3815
LICENSE NUMBER 00870084
john.hale@colliers.com

AGENT: STEPHEN HALE
ASSOCIATE
RETAIL PROPERTIES TEAM
CENTRAL CALIFORNIA
661 631 3820
LICENSE NUMBER 01997969
stephen.hale@colliers.com

VALLEY BLVD

COLLIERS INTERNATIONAL
10000 Stockdale Hwy, Suite 102
Bakersfield, CA 93311
661 631 3800
www.colliers.com/bakersfield



FOR SALE

HOME DEPOT OUT PARCEL

PROPERTY INFORMATION

SWC HIGHWAY 58 & NORTH MILL STREET, TEHACHAPI, CA

Subject property is located near the SWC of Highway 58 and Mill Street interchange on North Mill Street adjacent to Home Depot in Tehachapi, California

PROPERTY DESCRIPTION

- › APN# 415-110-02
- › Zoned C-2 (General Commercial)
- › Retail pad available for sale located in front of Home Depot adjacent to the Highway 58 interchange

AVAILABILITY

- › Land: 0.8 Acres
- › Area: 30,000 SF

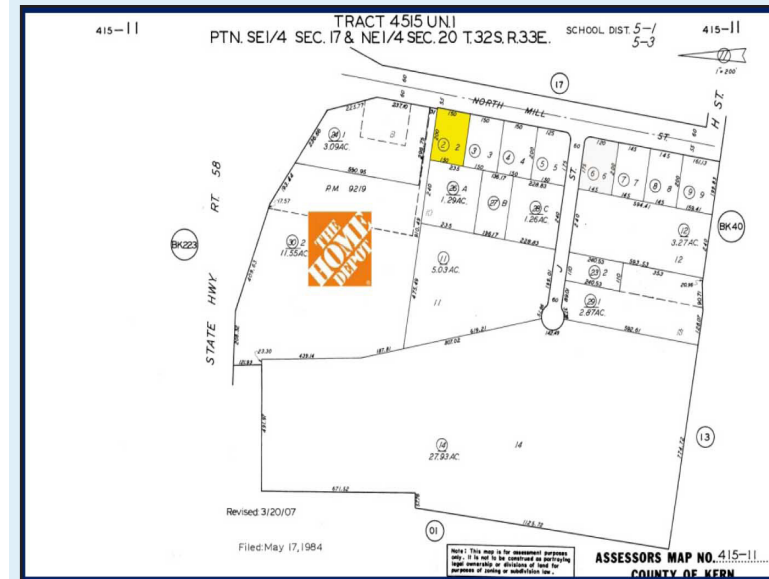
SALE PRICE:

- › \$300,000.00

DEMOGRAPHICS

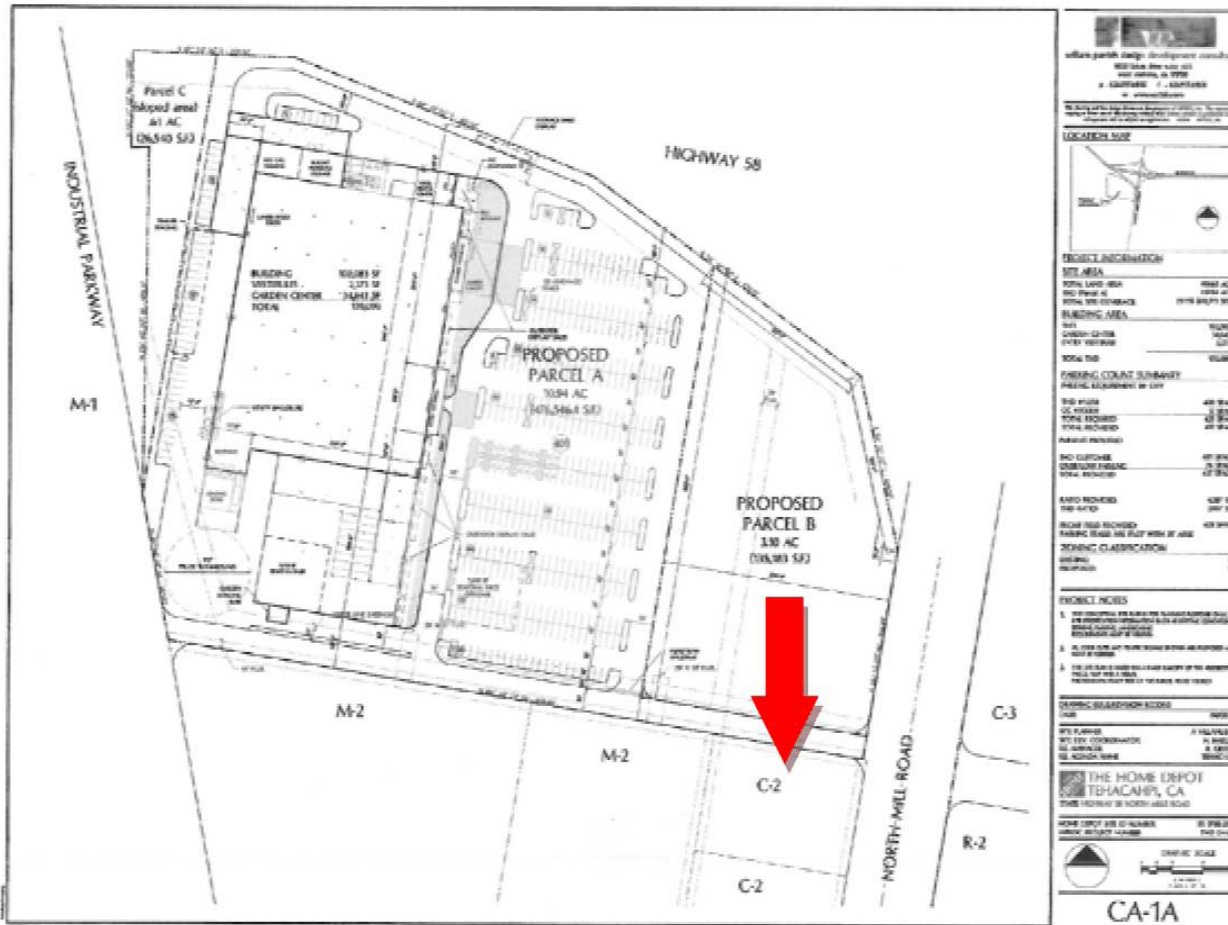
	1 Mile	3 Mile	5 Mile
Population:	2,539	16,336	20,428
Employees(Q2):	1,871	4,268	4,575
Avg HH Income:	\$52,270	\$66,987	\$71,148

2017 estimates, Alteryx.com



FOR SALE HOME DEPOT OUT PARCEL SITE PLAN

SWC HIGHWAY 58 & NORTH MILL STREET, TEHACHAPI, CA



CONTACT US:

AGENT: JOHN HALE
SENIOR VICE PRESIDENT | PRINCIPAL
RETAIL PROPERTIES TEAM
CENTRAL CALIFORNIA
661 631 3815
LICENSE NUMBER 00870084
john.hale@colliers.com

AGENT: STEPHEN HALE
ASSOCIATE
RETAIL PROPERTIES TEAM
CENTRAL CALIFORNIA
661 631 3820
LICENSE NUMBER 01997969
stephen.hale@colliers.com

COLLIERS INTERNATIONAL
10000 Stockdale Hwy, Suite 102
Bakersfield, CA 93311
661 631 3800
www.colliers.com/bakersfield

