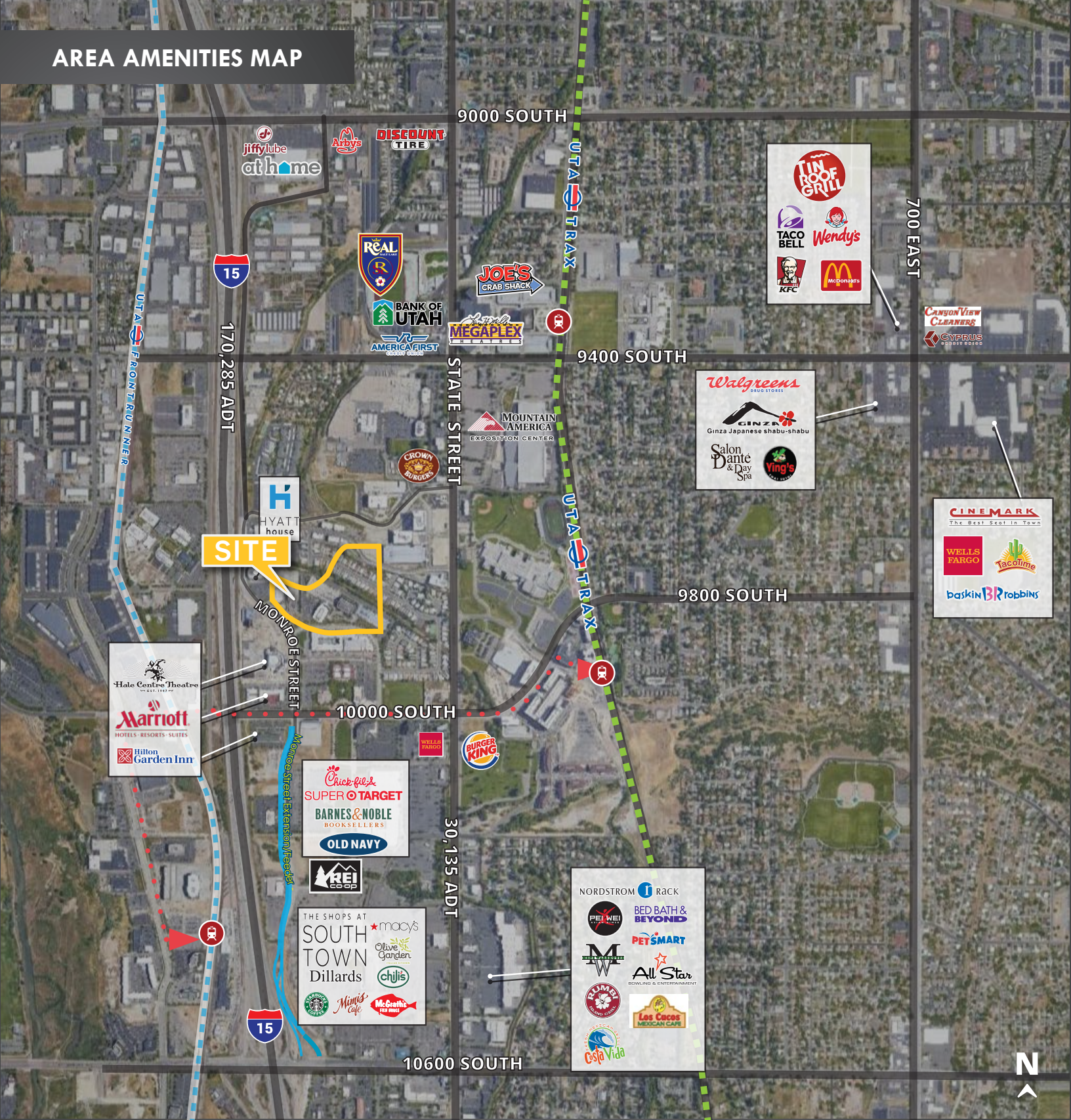


AREA AMENITIES MAP



# TOWNE RIDGE CENTER

SANDY UTAH

READY FOR OCCUPANCY!



75 WEST TOWNE RIDGE PARKWAY

Excellent exposure and access, located in the heart of Sandy offering access to both Salt Lake and Utah counties.



www.colliers.com

Brandon Fugal  
+1 801 947 8300  
brandon.fugal@colliers.com

Jordan Wall  
+1 801 453 6833  
jordan.wall@colliers.com

Jesse Raddon  
+1 801 947 8300  
jesse.raddon@colliers.com



WCF

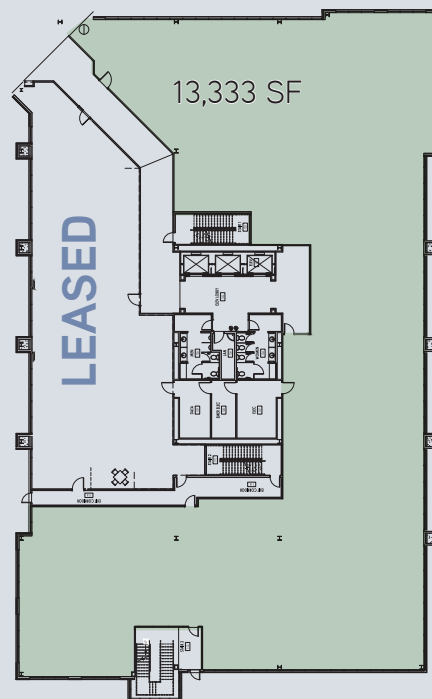




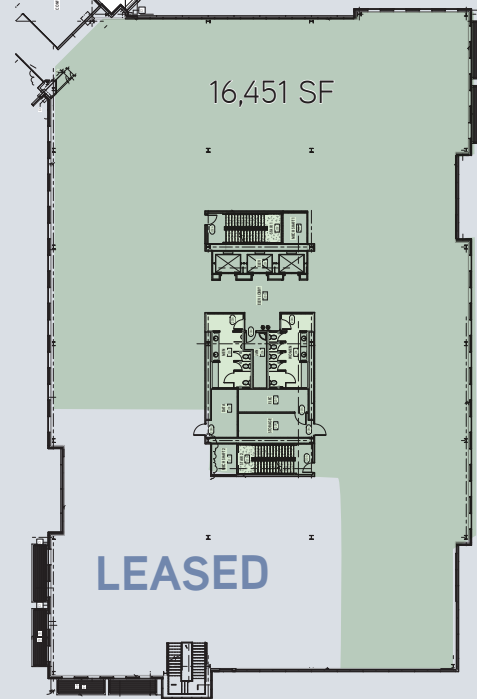
# TOWNE RIDGE CENTER

75 WEST TOWNE RIDGE PARKWAY  
SANDY UTAH

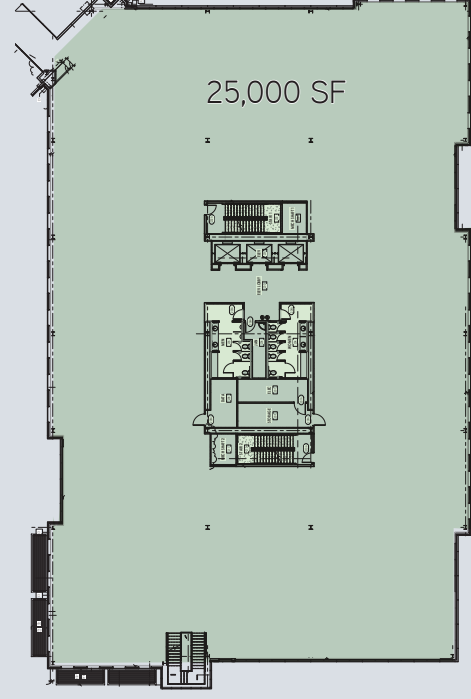
1ST FLOOR



2ND FLOOR



3RD FLOORS



## OFFICE PARK FEATURES

- › Total available: approx. 54,784 rentable square foot
- › Space on 1st, 2nd and 3rd floors available
- › 250,000 square feet campus
- › 125,000 square foot, 5-story buildings
- › 25,000 rentable square foot floor plates
- › Ready for occupancy
- › Generous improvement allowances
- › Abundant structured parking
- › Lease rate: \$28.50/sq. ft. full service

LOBBY CONCEPT



## NOTABLE BUILDING FEATURES

- › Dramatic atrium lobbies with connective entrances
- › Majority structured parking
- › Upscale finishes, state-of-the-art technology integration
- › Enhanced infrastructure to accommodate redundant power, fiber and monitoring systems



READY FOR OCCUPANCY

