



# Small Office Building For Lease or Sale

The Commons at Renaissance  
2004 Renaissance Boulevard, King of Prussia, PA



- 28,490 SF on two levels
- Ideal for mid-sized user occupiers
- Well sited property offers pleasant tree-top views
- Ample parking on all sides
- Park setting with landscaped jogging trails, picnic areas, and beautiful pond
- Amenities abound - Conshohocken is three minutes drive
- Strong ownership, professional on-site management
- Served by SEPTA Bus Route 95

FOR MORE INFORMATION,  
PLEASE CONTACT:

**SANDY RICHARDSON**

Senior Vice President

+1 215 928 7533

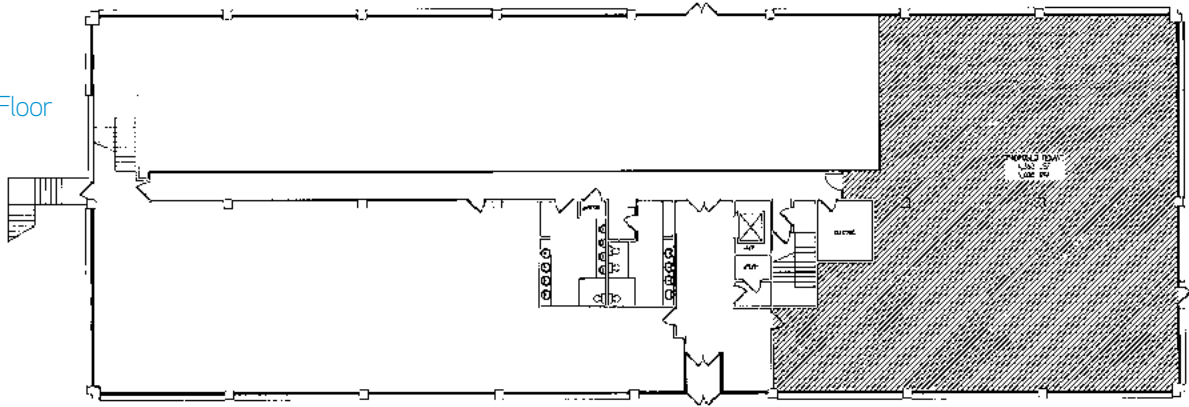
[sandy.richardson@colliers.com](mailto:sandy.richardson@colliers.com)



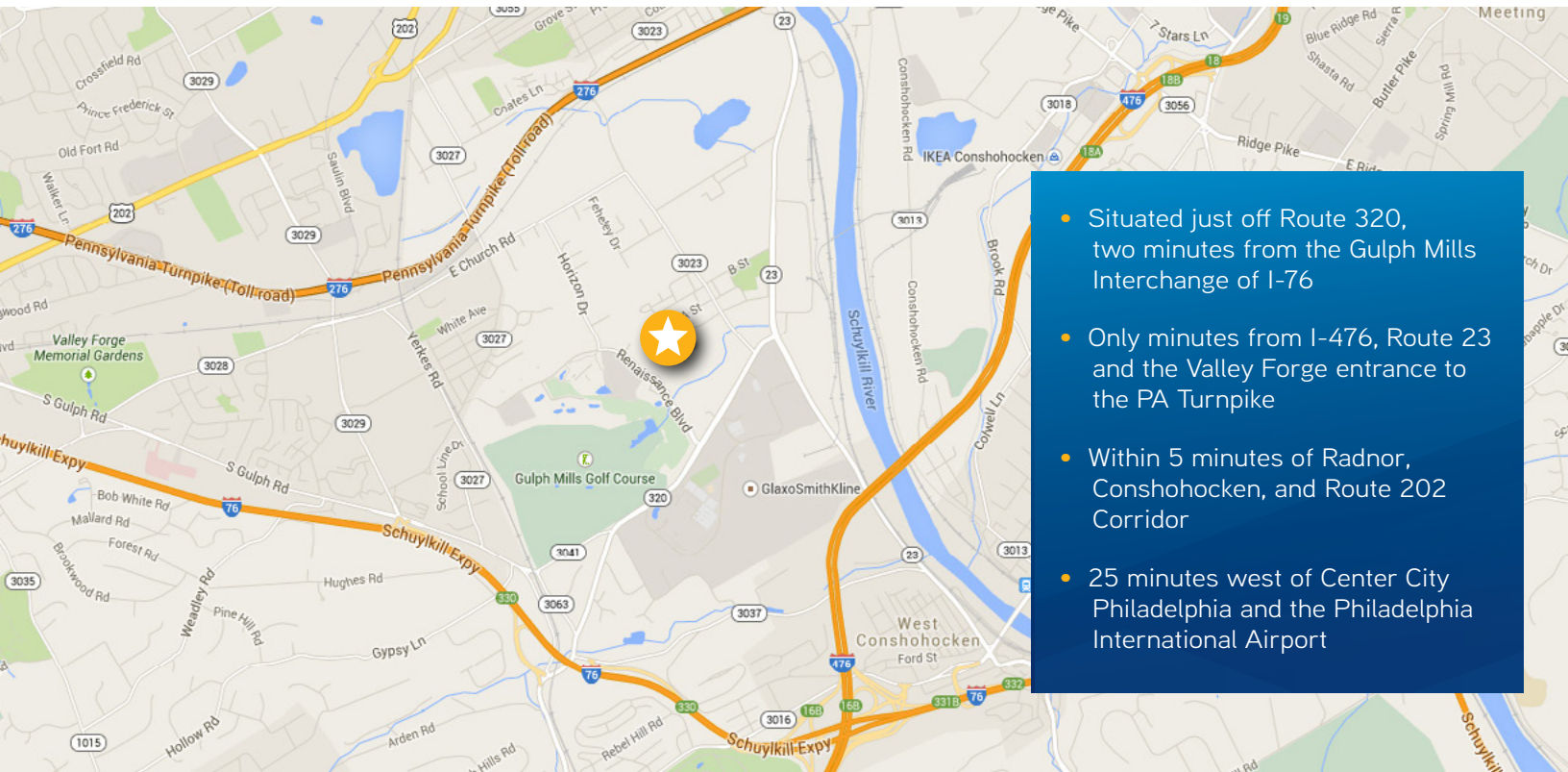
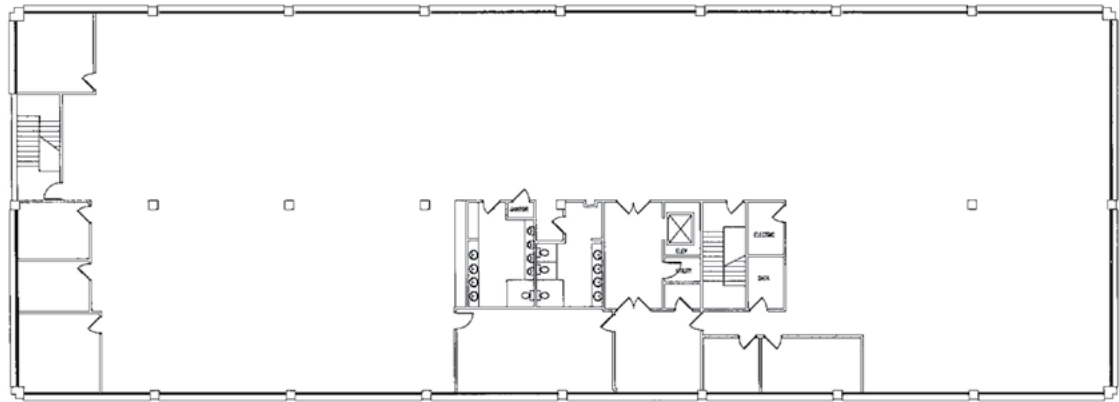


# 2004 Renaissance Boulevard, King of Prussia, PA

14,425 SF First Floor



14,425 SF Second Floor



- Situated just off Route 320, two minutes from the Gulph Mills Interchange of I-76
- Only minutes from I-476, Route 23 and the Valley Forge entrance to the PA Turnpike
- Within 5 minutes of Radnor, Conshohocken, and Route 202 Corridor
- 25 minutes west of Center City Philadelphia and the Philadelphia International Airport



@colliersphilly



colliersphilly



colliers.com/philadelphia

The foregoing information was furnished to us by sources which we deem to be reliable, but no warranty or representation is made as to the accuracy thereof. Subject to correction of errors, omissions, change of price, prior sale or withdrawal from market without notice. The aerial image is intended to provide a general outline of the subject property. It is not a survey nor should it be relied upon for purposes of determining property lines or boundaries.

**COLLIERS INTERNATIONAL**  
Ten Penn Center  
1801 Market Street Street, Suite 550  
Philadelphia, PA 19103  
+1 215 925 4600

