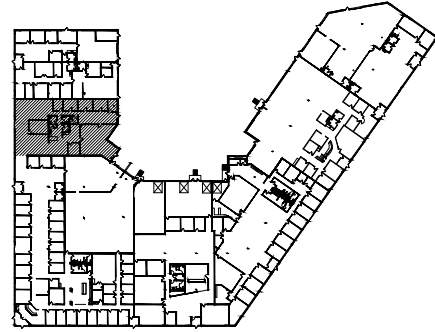


SQUARE FOOTAGE SUMMARY

OFFICE	4,330 SF
WAREHOUSE	1,037 SF
BLDG M/E	18 SF
TOTAL	<u>5,385 RSF</u>



KEY PLAN

NOT TO SCALE



1 FLOOR PLAN - SUITE 106/108
1 14.0001444.000/ TTL

10/30/24
SCALE: NTS



LEASED & MANAGED BY:



**NORTHWEST BUSINESS
CENTRE**
2950 XENIUM LANE NORTH
PLYMOUTH, MN

NELSON
901 Marquette Avenue South - Suite 2850
Minneapolis, MN 55402
Contact: Tiffany Townsend
Phone: (612) 370-1594