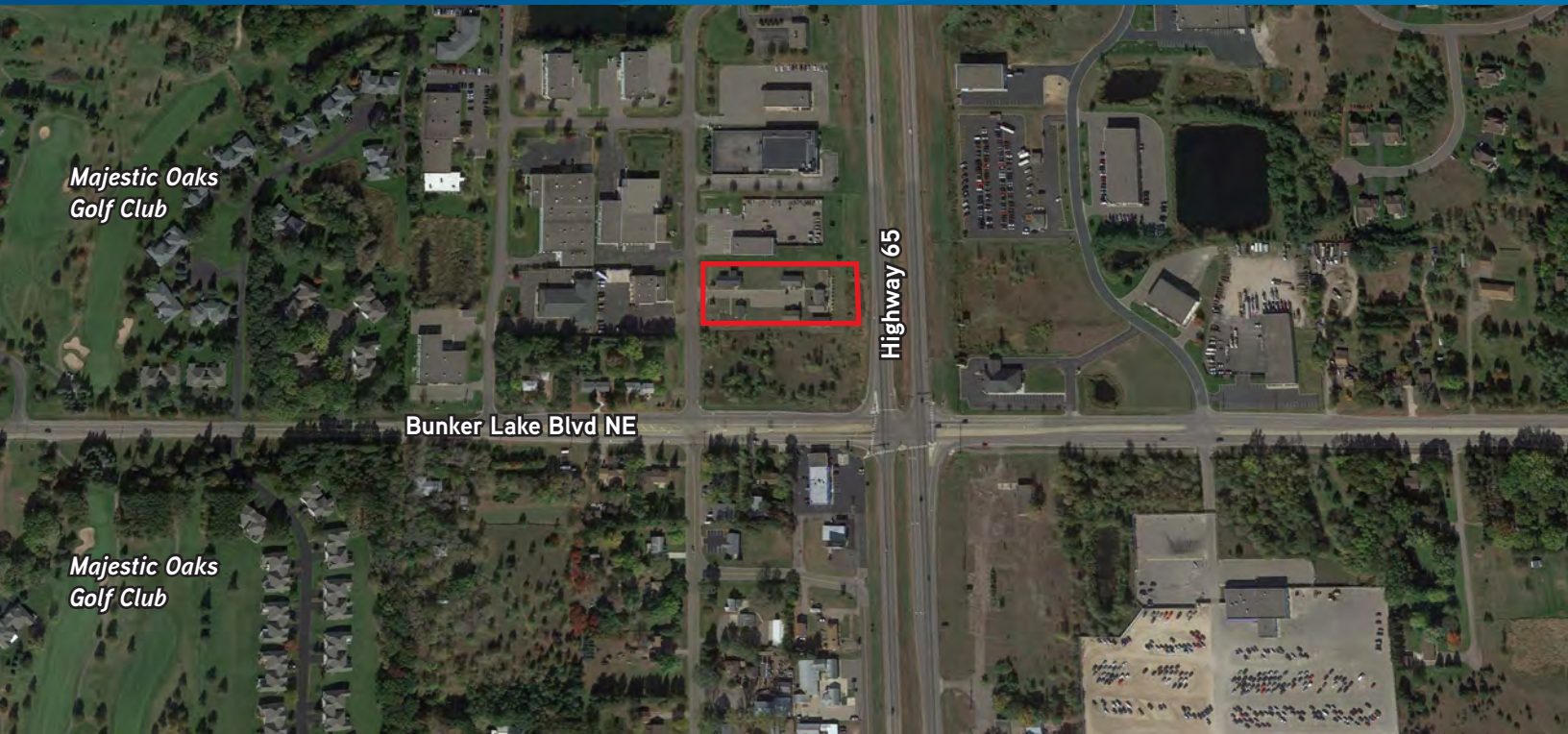


LAND FOR SALE >



Ham Lake Development Site - 1.82 Acres

13741 JOHNSON STREET NE | HAM LAKE, MINNESOTA



Property Details

- > High traffic intersection
- > Located on the Blaine/Ham Lake border
- > CD-1 Zoning, Highway Commercial
- > 213 lineal feet on Hwy 65
- > Traffic counts of 41,000 vehicles per day

Contact

PATRICK CULLEN
952 897 7735
patrick.cullen@colliers.com

DAN FRIEDNER
952 897 7863
dan.friedner@colliers.com

JAY CHMIELESKI
952 897 7801
jay.c@colliers.com

COLLIERS INTERNATIONAL
5985 Rice Creek Parkway, Suite 105
Shoreview, MN 55128
www.colliers.com/msp

Site Information

Location NEC of Highway 65 and Bunker Lake Blvd
Description Approximately 1.82 acres
Zoning CD-1; Commercial Development Tier I
PID 32-32-23-24-0021

DEMOGRAPHICS:	1 Mile	3 Miles	5 Miles
Population	7,548	31,139	88,061
Median HH Income	\$71,616	\$71,720	\$65,852
Average HH Income	\$78,390	\$77,955	\$72,729

TRAFFIC COUNTS:

Hwy 65 41,000 vehicles per day
Bunker Lake Blvd 11,421 vehicles per day
Andover Blvd 7,928 vehicles per day
Aberdeen St NE 631 vehicles per day

TAXES 2017:

\$8,065.40

SALE PRICE:

\$635,000



Contact

PATRICK CULLEN
952 897 7735
patrick.cullen@colliers.com

DAN FRIEDNER
952 897 7863
dan.friedner@colliers.com

JAY CHMIELESKI
952 897 7801
jay.c@colliers.com

COLLIERS INTERNATIONAL
5985 Rice Creek Parkway,
Suite 105
Shoreview, MN 55128

