

FOR LEASE

Stonemill Center

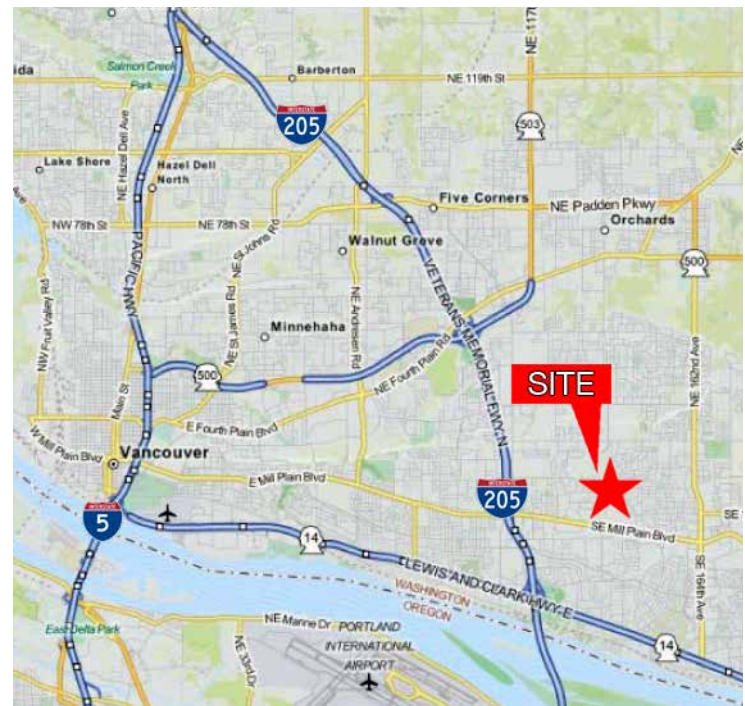
120 NE 136TH AVENUE, VANCOUVER, WA 98684



120 NE 136th Avenue Vancouver, Washington 98684

- › Building A availability: 23,199 SF (entire building)
- › Building B availability: 10,868 SF (can be demised down to 1,385 SF)
- › Built in 1997
- › Easy access to I-205
- › 8 minutes to PDX airport
- › Close proximity to restaurants, hotels, banks, medical and more
- › Free surface parking spaces are available at a rate of 6/1,000 SF

Lease Rate: Starting at \$19.50 RSF/FS

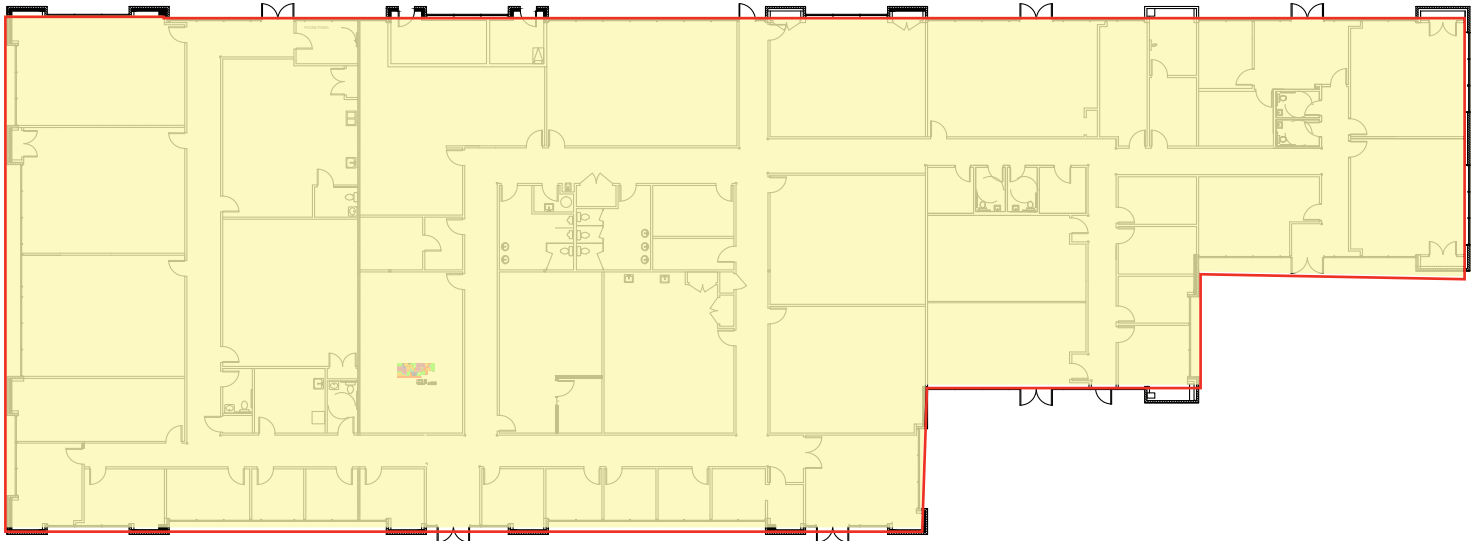


TAMARA FULLER, CCIM
360 852 9624
tamara.fuller@colliers.com
Licensed WA & OR Real Estate Broker

MIKE THOMAS
503 499 0059
mike.thomas@colliers.com
Licensed OR Real Estate Broker

COLLIERS INTERNATIONAL
700 Washington Street, Suite 608
Vancouver, WA 98660
www.colliers.com

Building A

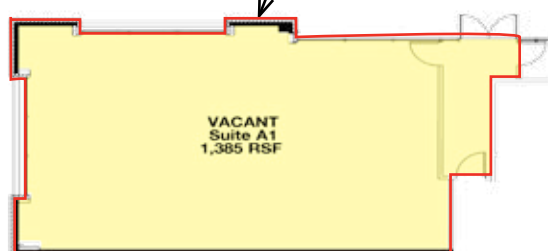
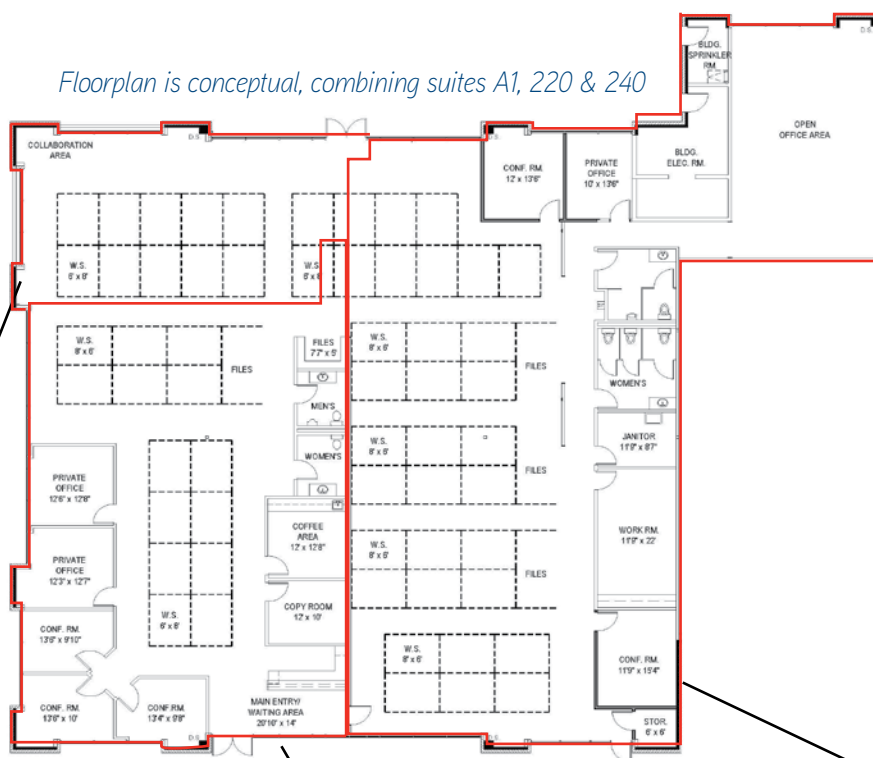


Building A

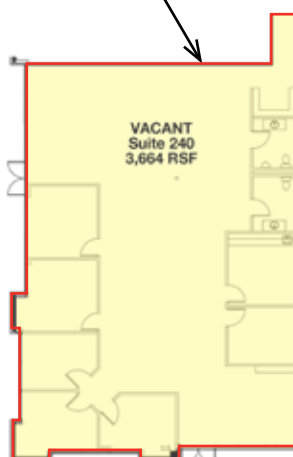
23,199 RSF

10,868 SF can be demised as follows:

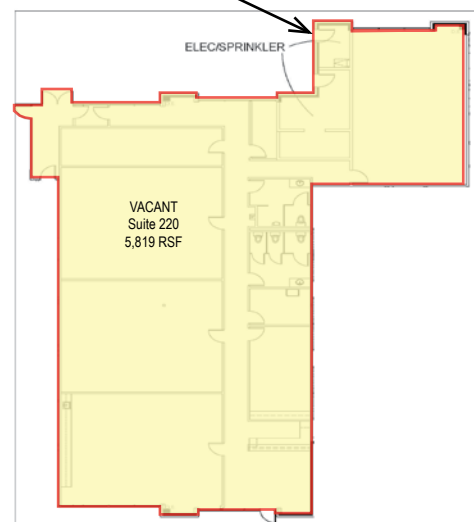
Suite A1*	1,385 RSF
Suite 240*	3,664 RSF
Suite 220*	5,819 RSF



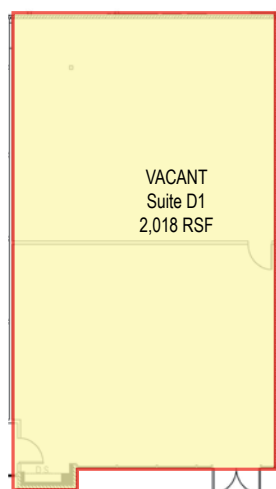
As-Built



As-Built



As-Built



Suite D1 2,018 SF
As-Built

COLLIERS INTERNATIONAL
700 Washington Street, Suite 608
Vancouver, WA 98660
www.colliers.com

FOR LEASE

Stonemill Center

120 NE 136TH AVENUE, VANCOUVER, WA 98684



This document has been prepared by Colliers International for advertising and general information only. Colliers International makes no guarantees, representations or warranties of any kind, expressed or implied, regarding the information including, but not limited to, warranties of content, accuracy and reliability. Any interested party should undertake their own inquiries as to the accuracy of the information. Colliers International excludes unequivocally all inferred or implied terms, conditions and warranties arising out of this document and excludes all liability for loss and damages arising therefrom. This publication is the copyrighted property of Colliers International and/or its licensor(s). ©2016. All rights reserved. 1/1/16

