

FOR LEASE > SMALL OFFICE SPACE

678 + 1,151 Square Feet

2239 MOORPARK AVENUE, SAN JOSE, CA

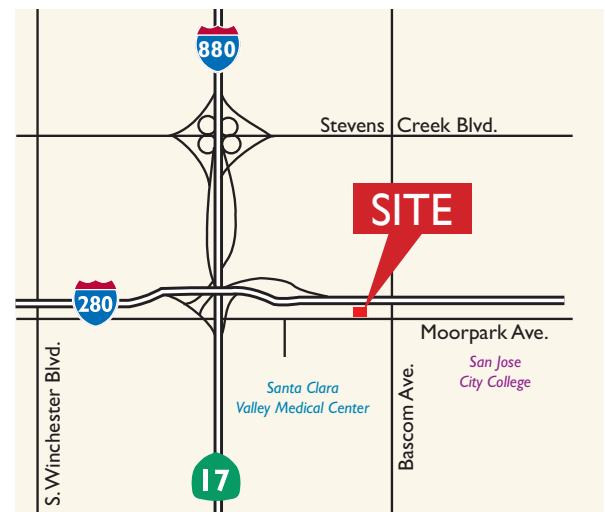


Features

- > Directly Across from Valley Medical Center
- > Tenant Pays PG&E
- > Covered Parking
- > Signage Possibilities
- > Each Suite Separately Metered
- > High Quality Improvements
- > Elevator Served
- > Vaulted Ceilings
- > Gross Rate
- > Call to Tour

Available Suites

Suite 102	678 SF
Suite 200	1,151 SF

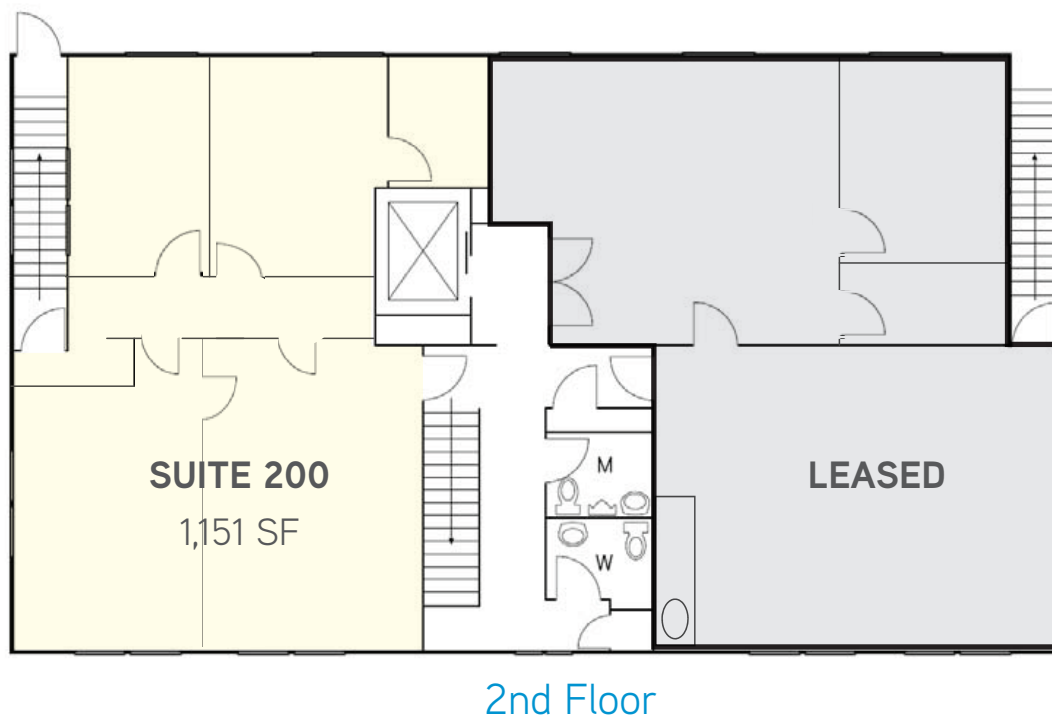
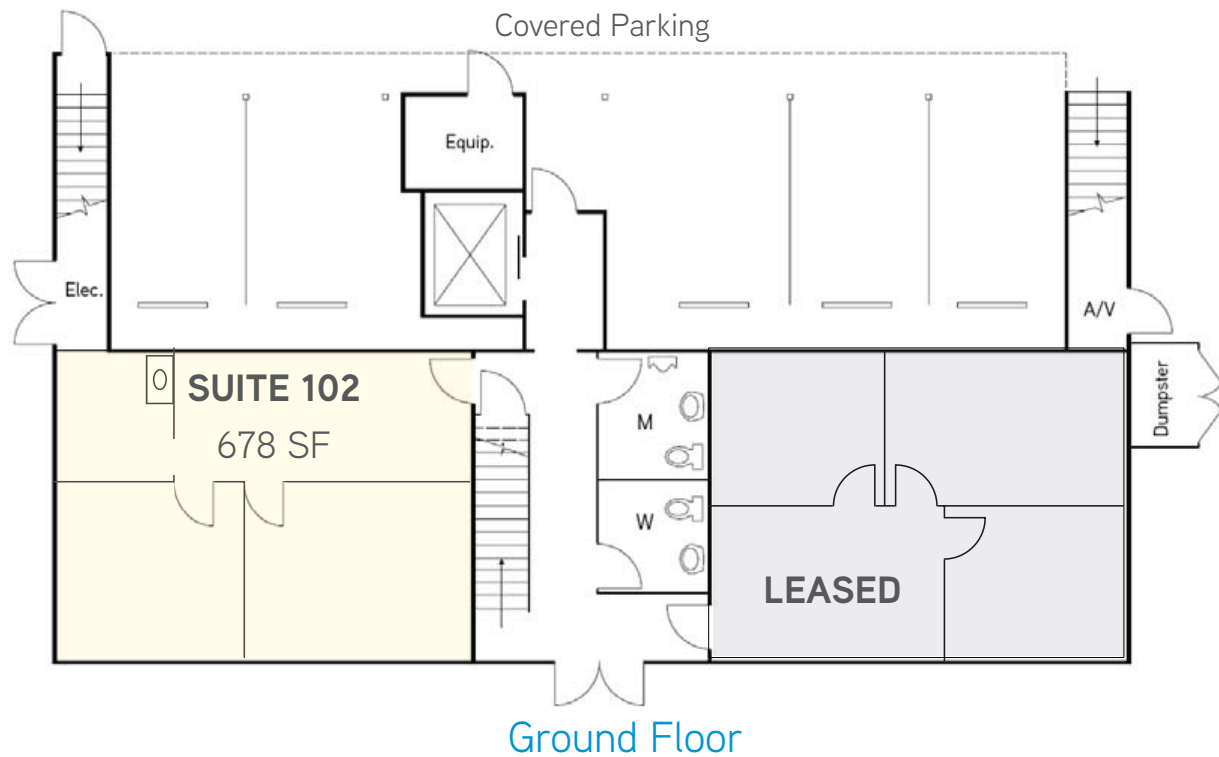


BRENT DRESSEN
+1 408 282 3979
brent.dressen@colliers.com
CA License No. 01425986

STEVE HUNT
+1 408 282 3846
steve.hunt@colliers.com
CA License No. 00959346

COLLIERS INTERNATIONAL
Silicon Valley
450 West Santa Clara Street
San Jose, CA 95113
www.colliers.com

2239 Moorpark Avenue > Floor Plan



Drawings not exact/not to scale. The information furnished has been obtained from sources we deem reliable and is submitted subject to errors, omissions and changes. Although Colliers International has no reason to doubt its accuracy, we do not guarantee it. All information should be verified by the recipient prior to lease, purchase, exchange, or execution of legal documents. © 2012 Colliers International

BRENT DRESSEN
+1 408 282 3979
brent.dressen@colliers.com
CA License No. 01425986

STEVE HUNT
+1 408 282 3846
steve.hunt@colliers.com
CA License No. 00959346

COLLIERS INTERNATIONAL
Silicon Valley
450 West Santa Clara Street
San Jose, CA 95113
www.colliers.com