

FOR LEASE > OFFICE SPACE

711 COMMONS PLACE

MANHATTAN, KANSAS



PROPERTY FEATURES

Former Urgent Care/Medical location in West Manhattan's favorite neighborhood shopping center. Center is anchored by Target, immediately adjacent to T-Mobile and Capitol Federal Savings Bank and has a great mix of retail, food and other services including Panera Bread, Arby's, GameStop, salons and banking. Directly across the street (west) from Home Depot and PetSmart, and is one of the most visible spaces within the center from Seth Child Road (approx. 25,000 VPD).

- > Available space: 3,219 SF
- > Year built: 2004
- > Zoning: PUD
- > Lease price: \$29/SF, gross
- > Includes four exam rooms, procedure room, x-ray room, waiting and physician's office



ALLISON VANCE MOORE SIOR
+1 785 865 3924
LAWRENCE, KS
allison.moore@colliers.com



RICH SEIDLER
+1 785 712 7251
MANHATTAN, KS
rich@cresks.com

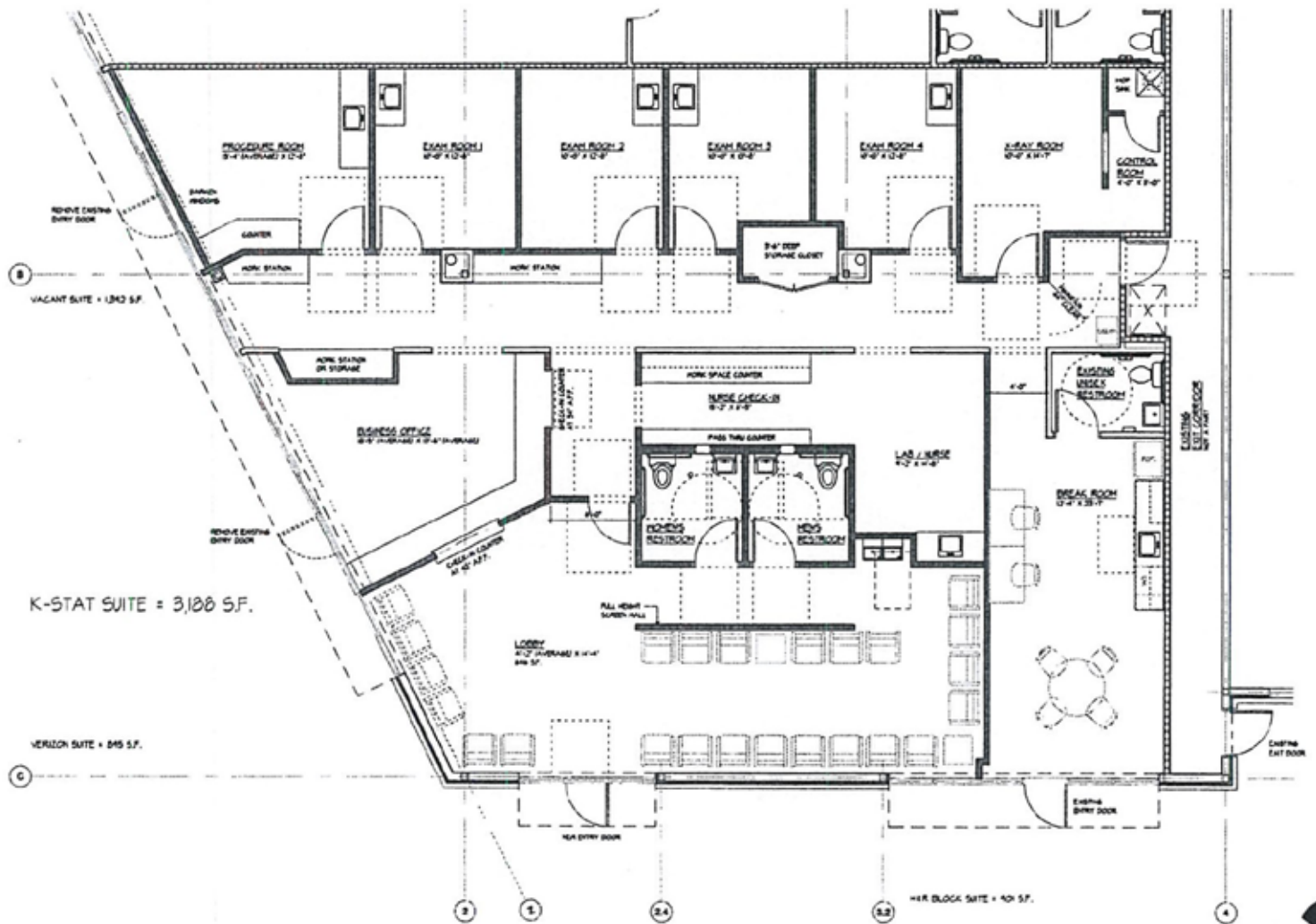
BRAD SEIDLER
+1 785 477 5572
MANHATTAN, KS
brad@cresks.com

FOR LEASE > OFFICE SPACE

711 COMMONS PLACE

MANHATTAN, KANSAS

FLOOR PLAN



FLOOR PLAN - SCHEME 4

SCALE: 1/4\" = 1'-0"

Colliers
INTERNATIONAL

ALLISON VANCE MOORE SIOR
+1 785 865 3924
LAWRENCE, KS
allison.moore@colliers.com

COMMERCIAL
REAL ESTATE
SERVICES
Manhattan, KS

RICH SEIDLER
+1 785 712 7251
MANHATTAN, KS
rich@cresks.com

BRAD SEIDLER
+1 785 477 5572
MANHATTAN, KS
brad@cresks.com

FOR LEASE > OFFICE SPACE

711 COMMONS PLACE

MANHATTAN, KANSAS



ALLISON VANCE MOORE SIOR
+1 785 865 3924
LAWRENCE, KS
allison.moore@colliers.com



RICH SEIDLER
+1 785 712 7251
MANHATTAN, KS
rich@cresks.com

BRAD SEIDLER
+1 785 477 5572
MANHATTAN, KS
brad@cresks.com

FOR LEASE > OFFICE SPACE

711 COMMONS PLACE

MANHATTAN, KANSAS



Contact Us:

ALLISON VANCE MOORE SIOR
+1 785 865 3924
LAWRENCE, KS
allison.moore@colliers.com

COLLIERS INTERNATIONAL
3705 Clinton Parkway, Suite 201
Lawrence, KS 66047
www.colliers.com



RICH SEIDLER
+1 785 712 7251
MANHATTAN, KS
rich@cresks.com

BRAD SEIDLER
+1 785 477 5572
MANHATTAN, KS
brad@cresks.com

COMMERICAL REAL ESTATE SERVICES, LLC
3214 Kimball Avenue
Manhattan, KS 66503
www.cresks.com

