

FOR LEASE > FLEX SPACE

# Carolina's Point



3545 CENTRE CIRCLE DRIVE, FORT MILL, SC (SUITE A)



## Carolina's Point > Flex Space

Carolina's Point Business Park is an industrial/flex/office park consisting of masonry constructed buildings catering to smaller tenants or owner occupied facilities. The park requires rear or side loaded facilities therefore keeping an attractive business park setting.

Located in Charlotte's southwest submarket, Carolina's Point has immediate access to the I-77 & I-485 interchange. Specifically located in Fort Mill, SC the property is in close proximity to executive housing.

## Building Amenities >

- > Large paved yard area for fleet trucks or possible outside storage
  - > Excellent parking
  - > Move-in condition
  - > 16' clear height
  - > Immediately available
- Suite A**
- > 3,000 SF available
  - > 650 SF of office
  - > (1) 8' x 10' dock door
  - > \$8.50 PSF/NNN

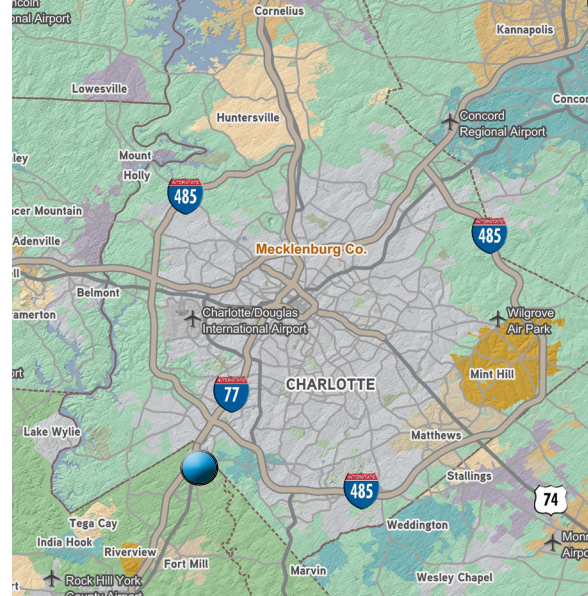
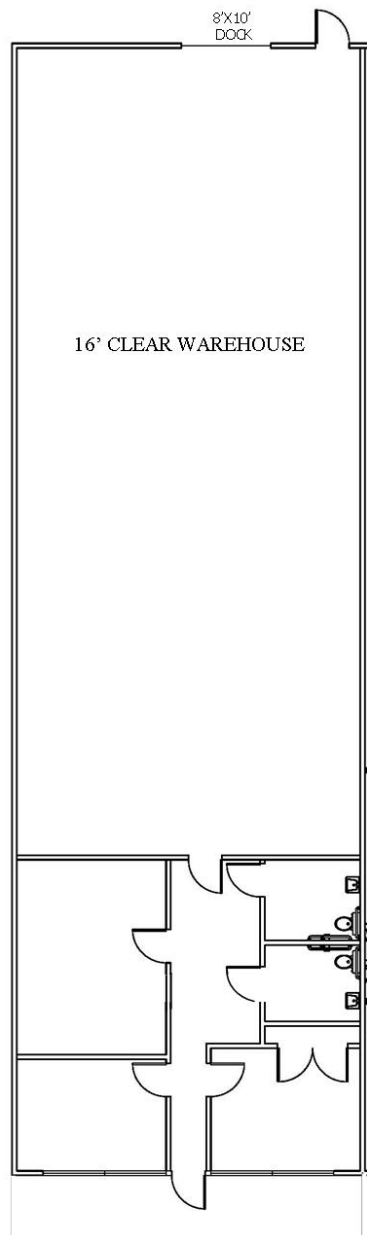


JUSTIN SMITH  
704 409 2379  
CHARLOTTE, NC  
justin.smith@colliers.com

COLLIERS INTERNATIONAL  
301 S. College St, Suite 3350  
Charlotte, NC 28202  
www.colliers.com

## Carolina's Point > Floor Plan

Suite A



## Contact Us

JUSTIN SMITH  
704 409 2379  
CHARLOTTE, NC  
[justin.smith@colliers.com](mailto:justin.smith@colliers.com)

COLLIERS INTERNATIONAL  
301 S. College St, Suite 3350  
Charlotte, NC 28202  
[www.colliers.com](http://www.colliers.com)