

FOR LEASE > OFFICE/RETAIL SPACE



Former Bank Branch

530 W. WADE HAMPTON BOULEVARD, GREER, SC 29651



Building Amenities

- > Corner Lot
- > Available: ±2,150 SF
- > Lot Size: ±.5 AC
- > Zoning: C2 (City of Greer)
- > Tax Map: # G019000104200
- > 3-bay drive-thru
- > **Lease Price: \$12/SF NNN**

Demographics (2017)

	1-MILE	3-MILE	5-MILE
POPULATION	6,050	36,390	80,780
AVERAGE HH INCOME	\$55,130	\$58,100	\$68,974



Traffic Count (2017)



30,500 VPD - (Wade Hampton Blvd.)

FRANK HAMMOND, CCIM, CPM
864 527 5451 DIRECT
864 297 4950
frank.hammond@colliers.com

COLLIERS INTERNATIONAL
55 E. Camperdown Way, Suite 200
Greenville, SC 29601
www.colliers.com

FOR LEASE > OFFICE/RETAIL SPACE

Former Bank Branch

530 W. WADE HAMPTON BOULEVARD, GREER, SC 29651

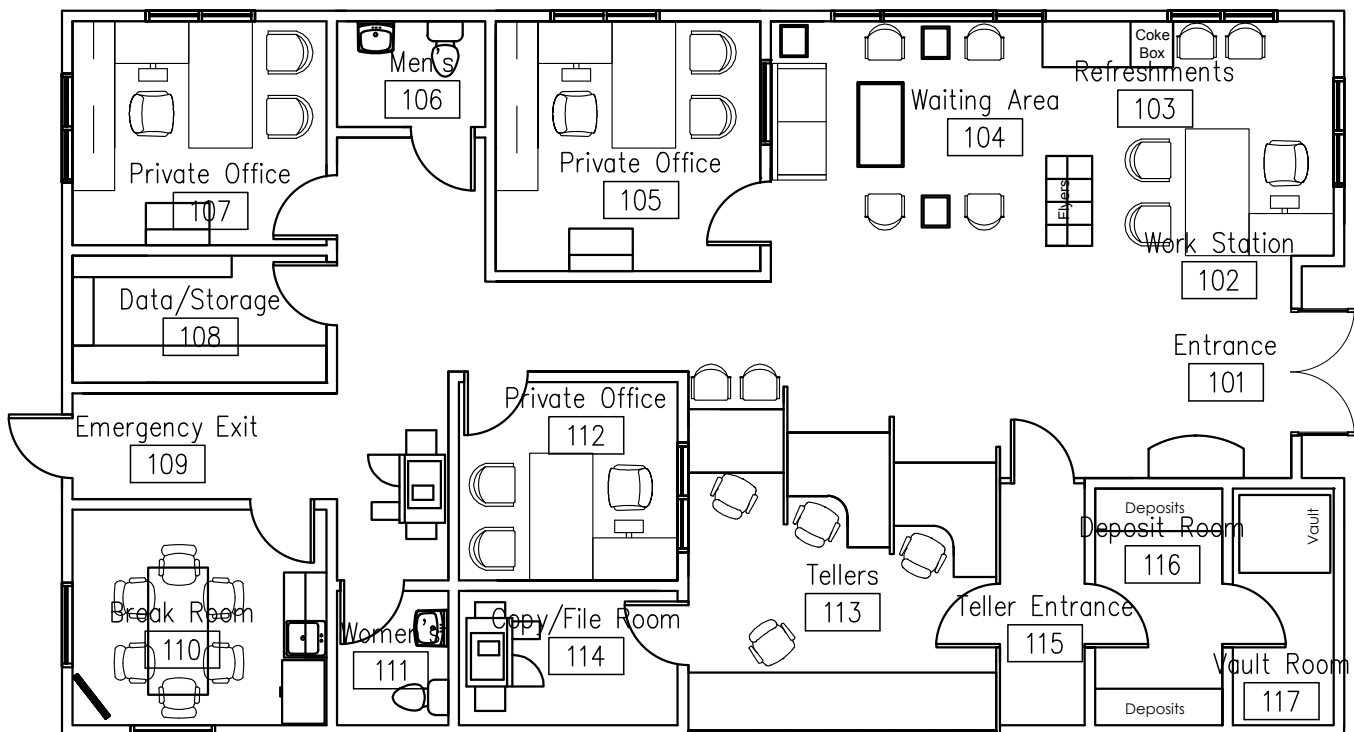


FOR LEASE > OFFICE/RETAIL SPACE

Former Bank Branch

530 W. WADE HAMPTON BOULEVARD, GREER, SC 29651

FLOOR PLAN



FOR LEASE > OFFICE/RETAIL SPACE

Former Bank Branch

530 W. WADE HAMPTON BOULEVARD, GREER, SC 29651



Contact Us

FRANK HAMMOND, CCIM, CPM

864 527 5451 DIRECT

864 297 4950 MAIN

frank.hammond@colliers.com

COLLIERS INTERNATIONAL
55 E. Camperdown Way, Suite 200
Greenville, SC 29601

www.colliers.com

This document has been prepared by Colliers International for advertising and general information only. Colliers International makes no guarantees, representations or warranties of any kind, expressed or implied, regarding the information including, but not limited to, warranties of content, accuracy and reliability. Any interested party should undertake their own inquiries as to the accuracy of the information. Colliers International excludes unequivocally all inferred or implied terms, conditions and warranties arising out of this document and excludes all liability for loss and damages arising there from. This publication is the copyrighted property of Colliers International and/or its licensor(s). ©2018. All rights reserved.

