

FOR LEASE > OFFICE SPACE

ALEXANDER BUILDING

890 W. MAIN STREET | BOISE, ID 83702



PROPERTY INFORMATION

Building Type:	Office
Building Size:	20,000 SF
Space Available:	2,517 SF
Parking:	Parking garage at market rates attached to building
Lease Type:	Full Service

SPACE AVAILABLE

SUITE	SIZE	RATE
301	2,517 SF	\$16.75/SF FS

HIGHLIGHTS

- » Excellent downtown location suited for a variety of professional firms (CPA's, Lawyers, Family Wealth Managers, Real Estate Firms)
- » Walking distance to numerous downtown amenities
- » Eastman garage adjacent with 396 parking stalls connected via sky bridge for direct access for employees and clients

SCOTT FEIGNER
208 493 5107
scott.feigner@colliers.com

LEW MANGLOS, MBA, CCIM, SIOR
208 472 2841
lew.manglos@colliers.com

Colliers International | Idaho
755 West Front Street, Suite 300
Boise, Idaho 83702
208 345 9000
www.colliers.com/boise

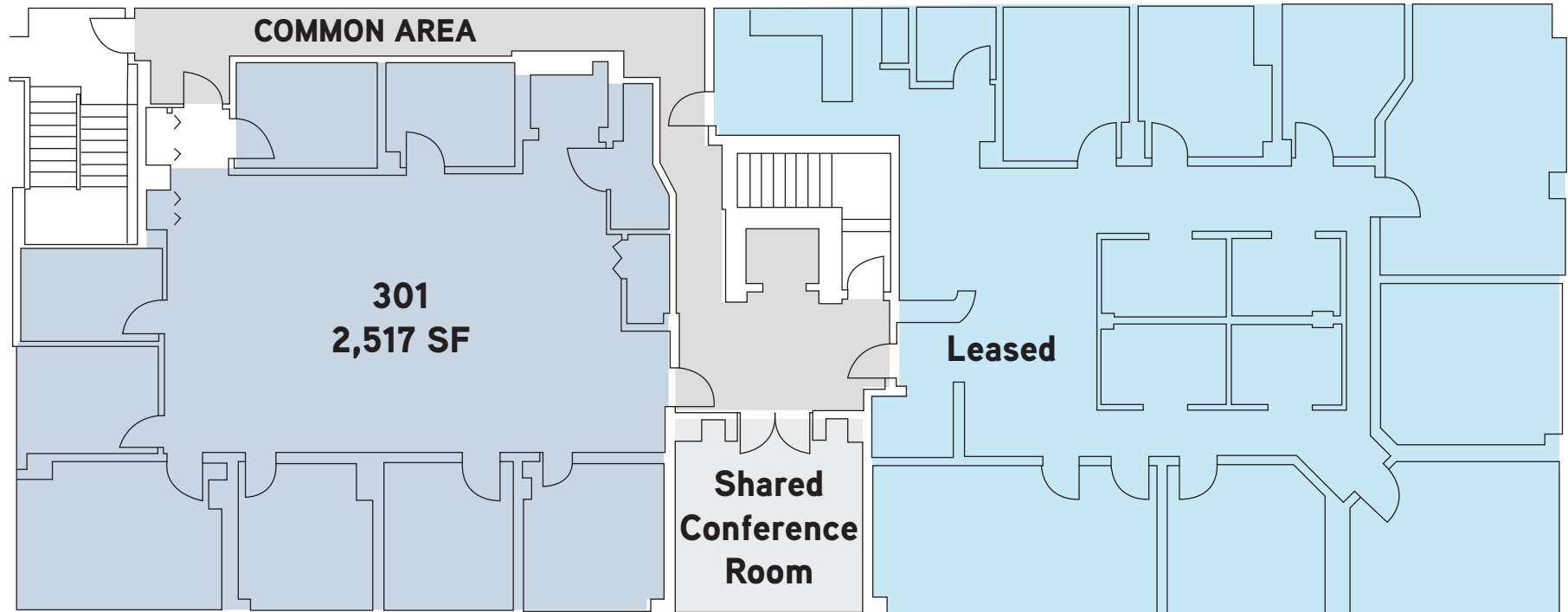
Colliers
INTERNATIONAL

Colliers International makes no guarantees, representations or warranties of any kind, expressed or implied, regarding the information including, but not limited to, warranties of content, accuracy and reliability. This publication is the copyrighted property of Colliers International and /or its licensor(s). 2015. All rights reserved subject to change or withdrawal without notice.

ALEXANDER BUILDING

890 W. MAIN STREET | BOISE, ID 83702

Colliers
INTERNATIONAL



ALEXANDER BUILDING

890 W. MAIN STREET | BOISE, ID 83702

Colliers
INTERNATIONAL

