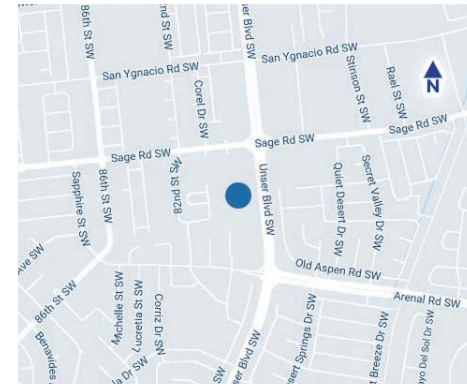
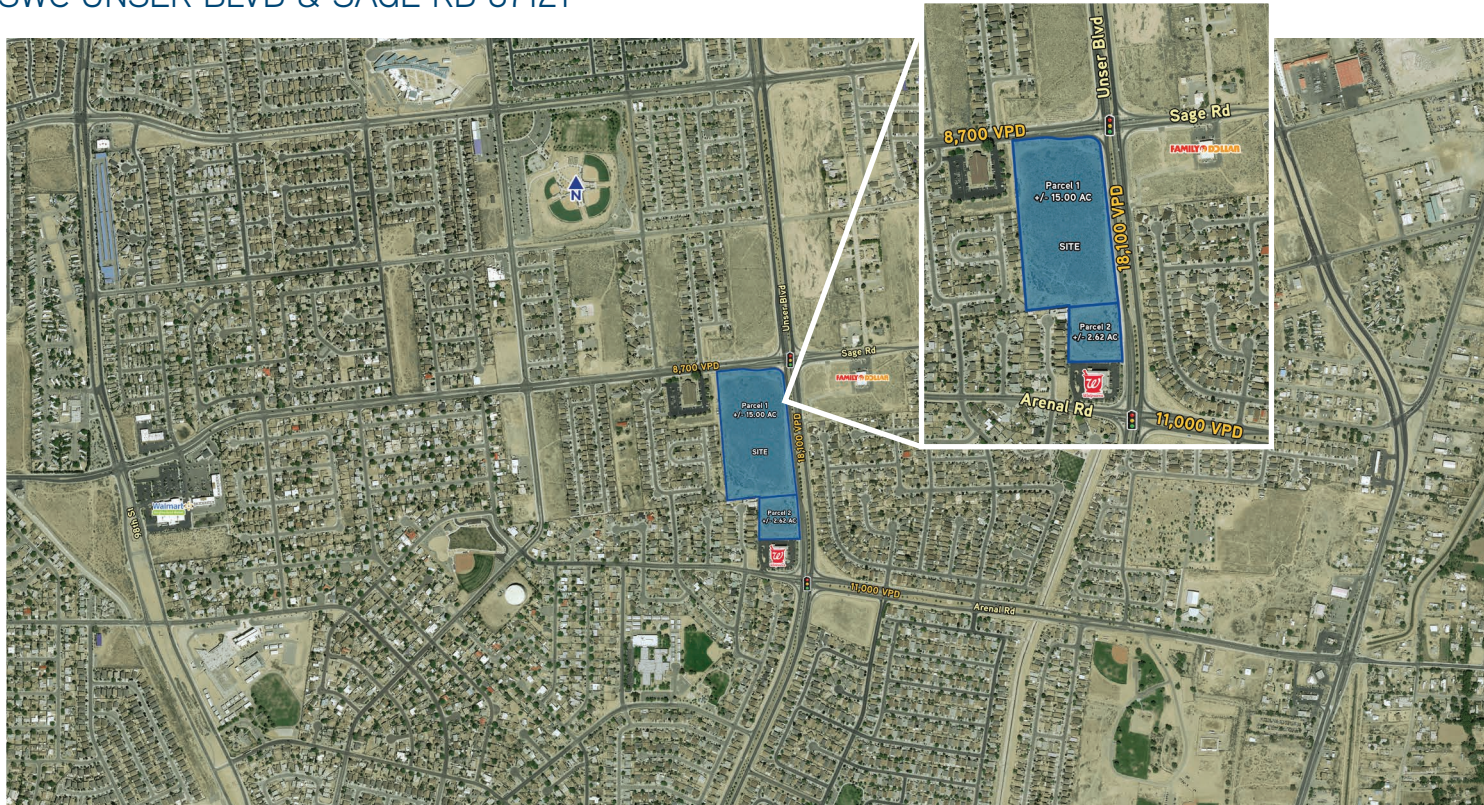


Retail Development Opportunity

SWC UNSER BLVD & SAGE RD 87121

Accelerating success.



CONTACT US

BOB FEINBERG
SR. VICE PRESIDENT | PRINCIPAL
+1 505 238 7707
ALBUQUERQUE, NM
LICENSE #9916
bob.feinberg@colliers.com

TOM JONES, CCIM
SR. VICE PRESIDENT | PRINCIPAL
+1 505 880 7063
ALBUQUERQUE, NM
LICENSE #37218
tom.jones@colliers.com

SHONA MARTINEZ
ASSOCIATE BROKER
+1 505 492 9405
ALBUQUERQUE, NM
LICENSE #51234
shona.martinez@colliers.com

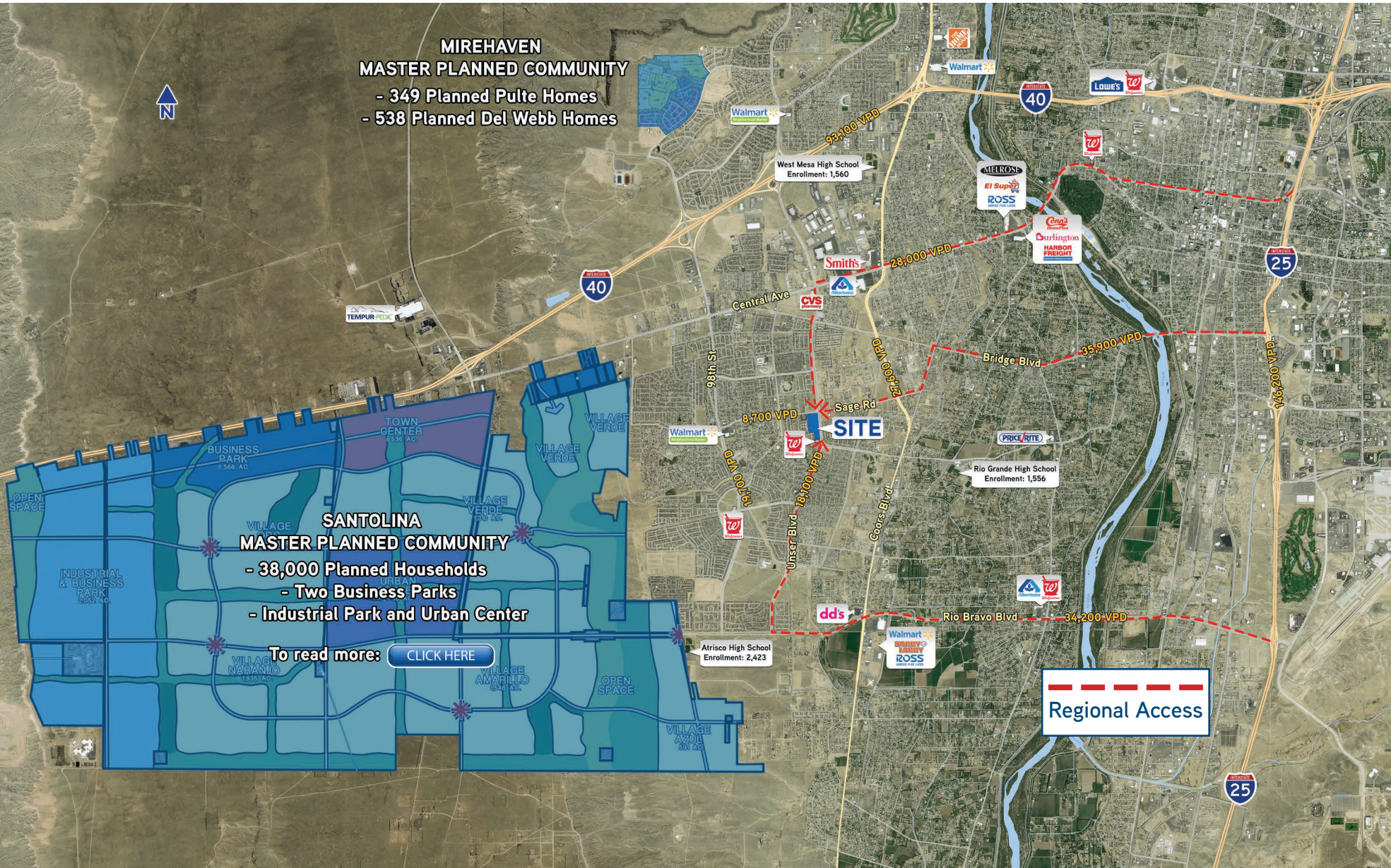
COLLIERS INTERNATIONAL | NM
MAIN +1 505 883 7676
5051 Journal Center Blvd. NE, Suite 200
Albuquerque, NM 87109
www.colliers.com

Details

- > Lease Rate: See Broker
- > Lot Size: +/- 17.62 AC
 - Parcel 1: +/- 15.00 AC
 - Parcel 2: +/- 2.62 AC
- > Zoning: SU-1 / C-1

Property Features

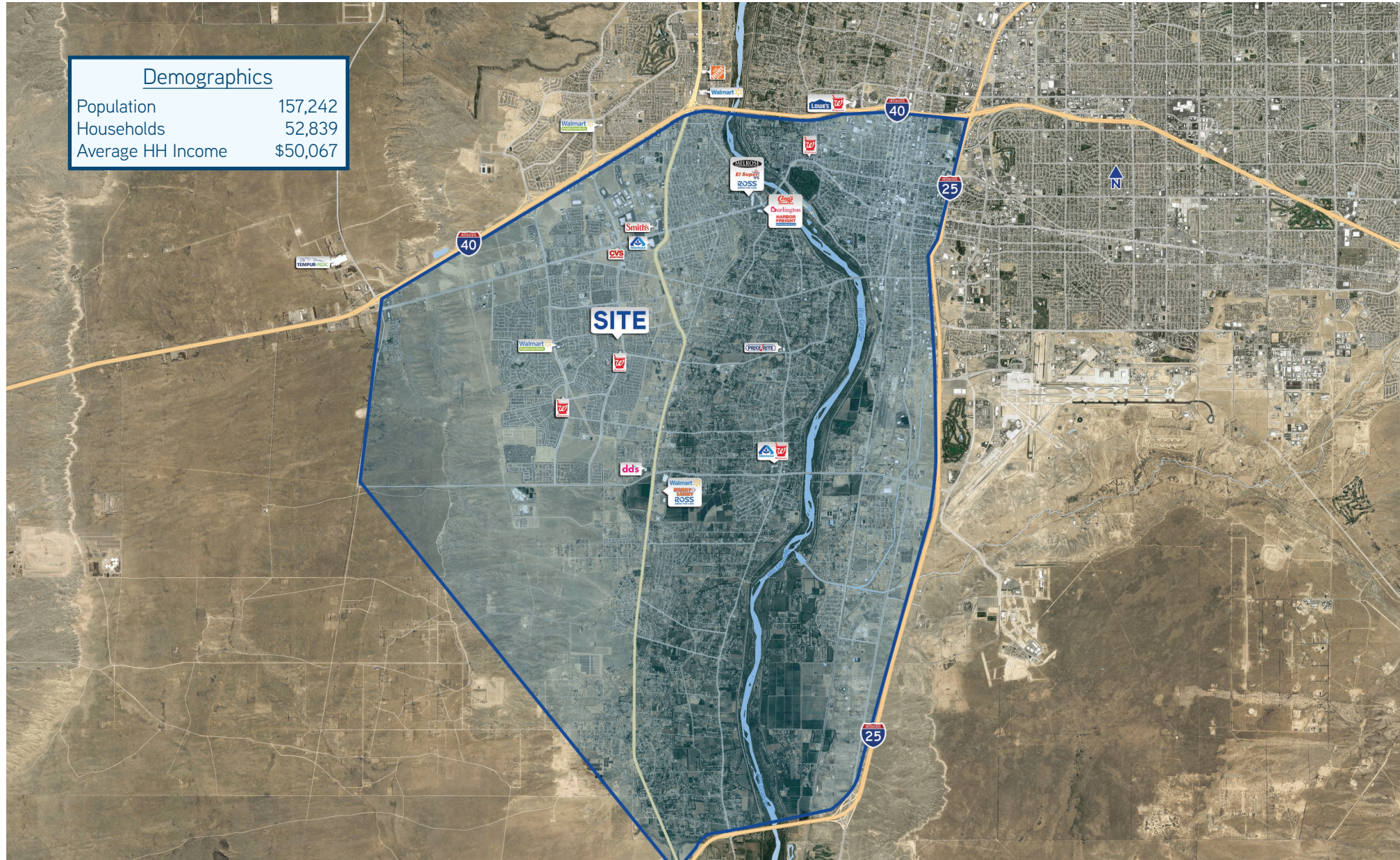
- > Prime retail development opportunity in highly underserved trade area
- > Major growth corridor with multiple housing developments in area
- > Anchor & Jr. Anchor, Pad Sites and Shop Space opportunities available
- > Located at a signalized intersection with multiple access points
- > Excellent visibility on the hard corner with traffic counts in excess of 26,800 VPD



Polygon Study & Drive Times

SWC UNSER BLVD & SAGE RD 87121

Accelerating success.



Independently Owned and Operated – The information contained herein was obtained from sources believed reliable; however, Colliers International makes no guarantees, warranties or representations as to the completeness or accuracy thereof. The presentation of this property is submitted subject to errors, omissions, change of price or conditions prior to sale or lease, or withdrawal without notice.

Demographics

SWC UNSER BLVD & SAGE RD 87121

Accelerating success.

CONTACT US

BOB FEINBERG
SR. VICE PRESIDENT | PRINCIPAL
+1 505 238 7707
ALBUQUERQUE, NM
LICENSE #9916
bob.feinberg@colliers.com

TOM JONES, CCIM
SR. VICE PRESIDENT | PRINCIPAL
+1 505 880 7063
ALBUQUERQUE, NM
LICENSE #37218
tom.jones@colliers.com

SHONA MARTINEZ
ASSOCIATE BROKER
+1 505 492 9405
ALBUQUERQUE, NM
LICENSE #51234
shona.martinez@colliers.com

Demographics

	1-Mile	3-Mile	5-Mile
Total Population	21,988	106,312	181,535
Total Households	6,340	33,243	62,077
Average HH Income	\$53,997	\$51,135	\$53,790