



For Lease

Downtown Office Space

1712 N Meridian St
Indianapolis, IN

Directly located across from IndyGo bus line

Property Highlights

- ± 17,000 SF of available office space for lease
- 1st floor space with private suite entry
- Complimentary, onsite parking
- Prestigious Meridian Street address
- Located in the heart of the redeveloping 16th Street corridor
- Excellent access to major interstates (I-65 and I-70)
- Adjacent to WFYI Indianapolis
- Exterior signage available
- Lease Rate: \$17.50 / SF Full Service



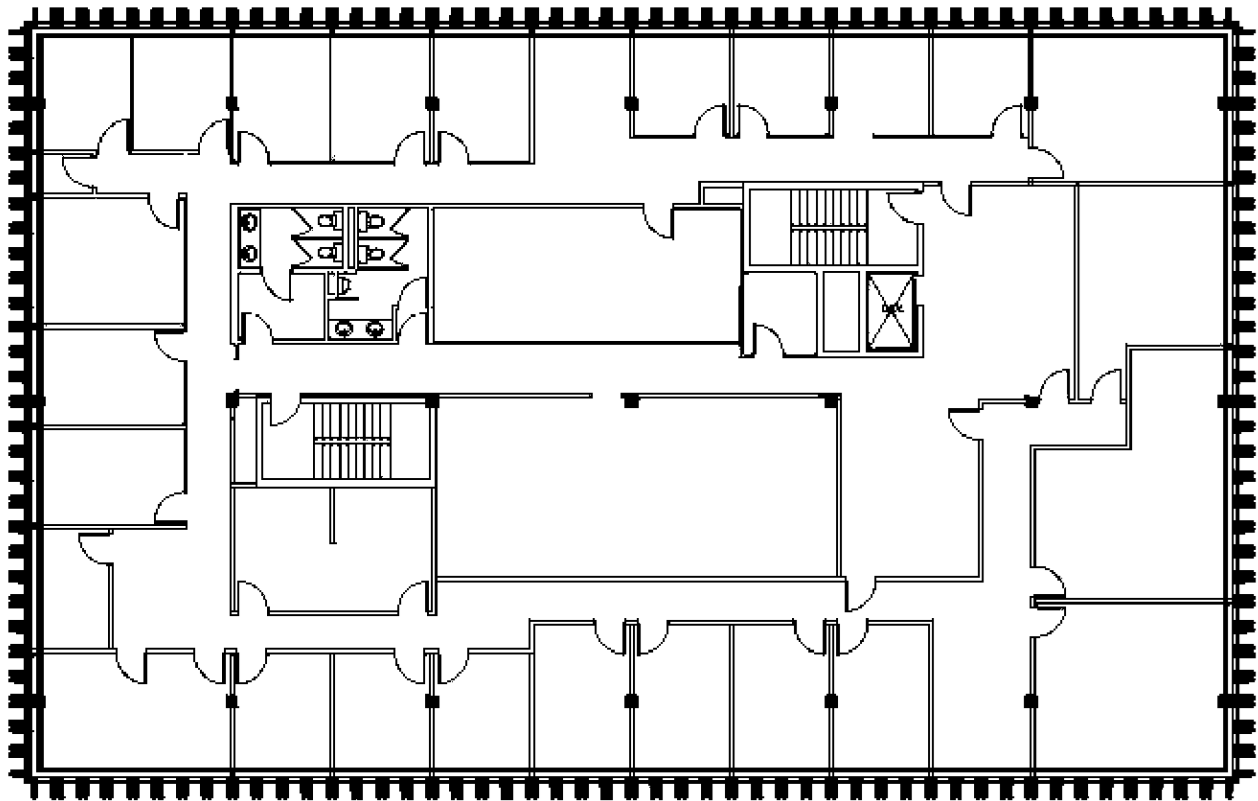
Matt Langfeldt
+1 317 713 2173
matt.langfeldt@colliers.com

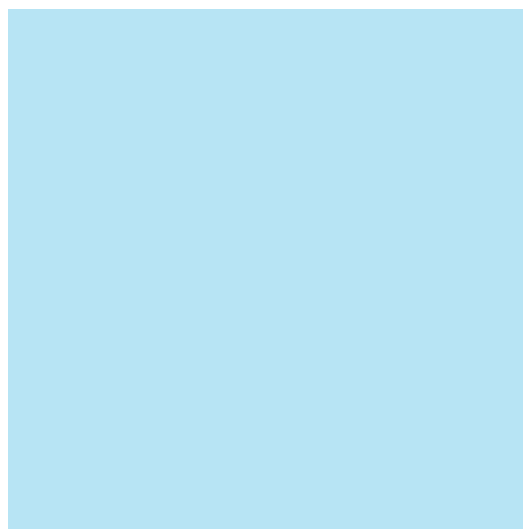
Aaron Snoddy
+1 317 713 2106
aaron.snoddy@colliers.com

For more information, please visit OfficeIndy.com.

Typical Floor Plan

± 9,900 RSF





Property Info

Building Size	22,000 SF
# of Floors	3
Elevators	1
Year Built	1958
Zoning	C-4



20+

Entertainment + Sports Venues

60+

Dining Options

12+

Art + Theatre Venues

25+

Hotels + Lodging Options

75

Bike Score

79

Walk Score

52

Transit Score

Matt Langfeldt
+1 317 713 2173
matt.langfeldt@colliers.com

Aaron Snoddy
+1 317 713 2106
aaron.snoddy@colliers.com



For more information, please visit OfficeIndy.com.