



**FOR LEASE 7,876 SF**

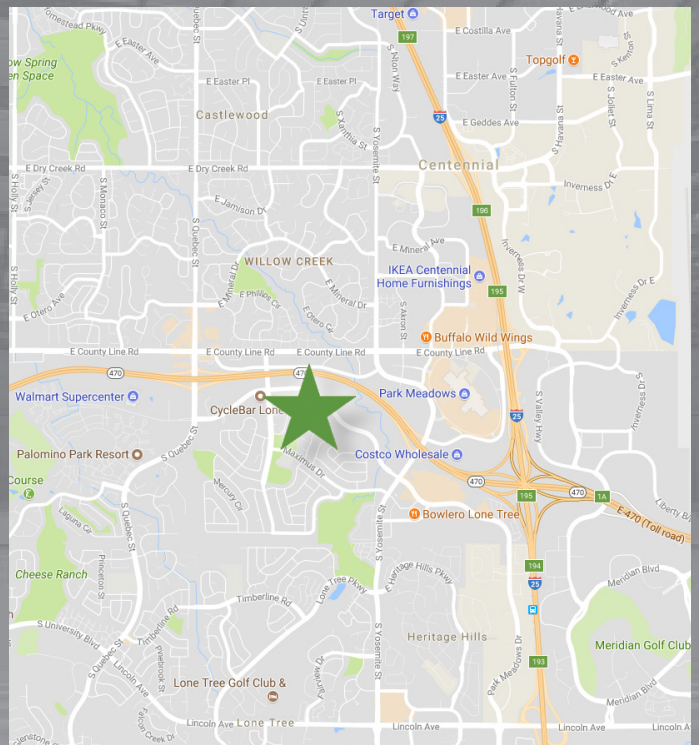
## Parkway Point

8232 E. Park Meadows Drive, Lone Tree, CO 80124

Parkway Point is a single story office, flex, R&D facility. The flexible building design allows for a wide variety of uses and industry types. Located across the street from Furniture Row. Excellent Showroom opportunity. End unit with three sides of glass.

### Highlights

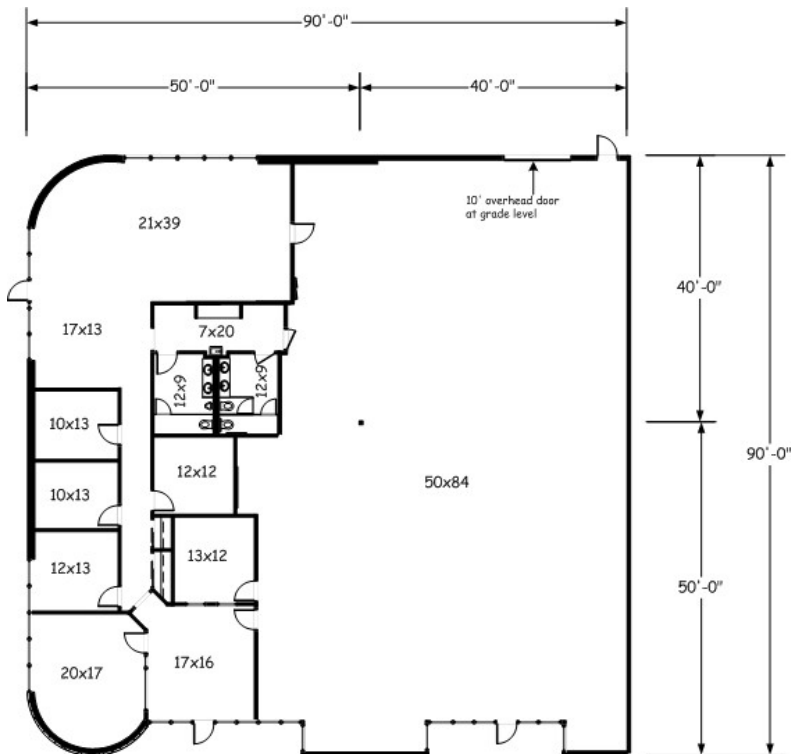
<b>Available:</b>	Second Quarter 2018
<b>Available SF:</b>	7,851
<b>Office SF:</b>	±2,925
<b>Warehouse SF:</b>	±4,951
<b>Base Rent:</b>	\$10.00/SF NNN
<b>2018 NNN:</b>	\$3.99/SF
<b>Monthly Rent:</b>	\$9,152.96
<b>Drive In:</b>	One (1)
<b>Clear Height:</b>	12-13'
<b>Amenities:</b>	Great End Unit
<b>Parking:</b>	Uncovered, Surface



# Parkway Point

8232 E. Park Meadows Drive, Lone Tree, CO 80124

## Space Plan



## Broker Contact

Cody Sheesley  
(303) 309-3520  
cody.sheesley@colliers.com



[www.colliers.com](http://www.colliers.com)

## Owner Contact

John Strabel  
Regional Director  
8200 Park Meadows Drive, Unit 8226  
Lone Tree, CO 80124  
Direct: (248) 894-3974  
jstrabel@firstindustrial.com



[www.firstindustrial.com](http://www.firstindustrial.com)