

FOR LEASE 4,850 SF

8224 E. Park Meadows Drive
Lone Tree, CO 80124

Parkway Point is a single story office, flex, R & D facility. The flexible building design allows for a wide variety of uses and industry types. Located across the street from Furniture Row with frontage and visibility on Park Meadows Drive.

Highlights

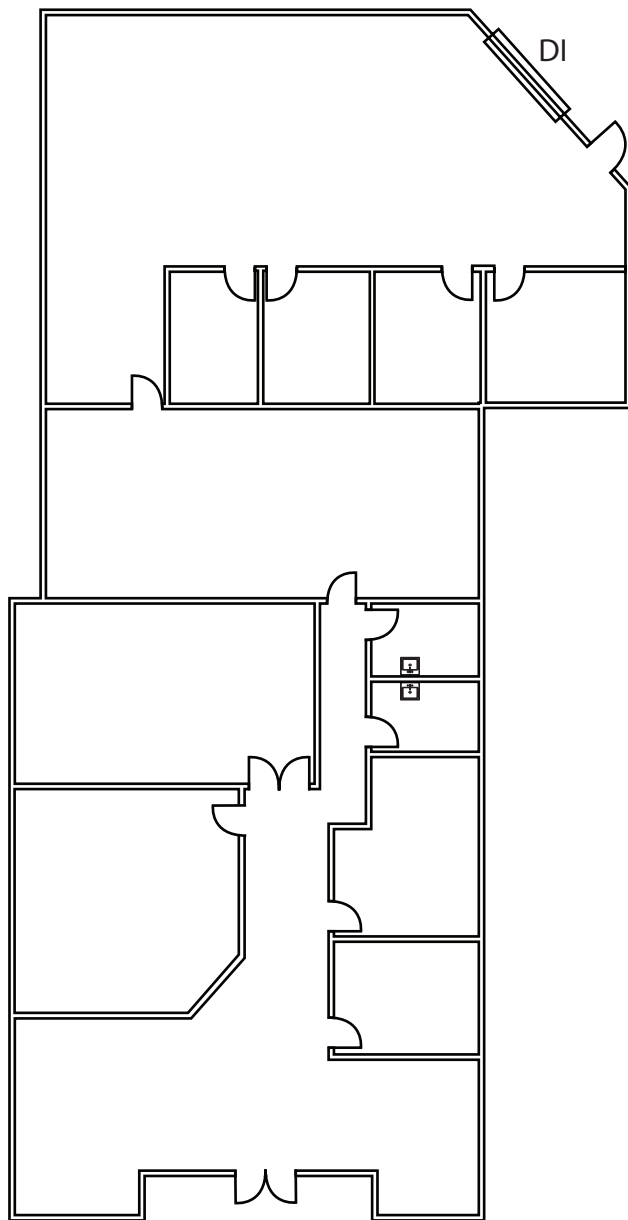
Available:	July 1, 2018
Available SF:	4,818
Office SF:	100% will demo
Base Rent:	\$11.50/SF NNN
2018 CAM:	\$3.99/SF
Monthly Rent:	\$6,219.24
Drive-In:	One
Clear Height:	13'
Parking:	Uncovered, Surface
Power:	208/120 Volt 3-Phase (to be verified)



Parkway Point

8224 E. Park Meadows Drive, Lone Tree, CO 80124

Space Plan



Broker Contact

Cody Sheesley
(303) 309-3520
cody.sheesley@colliers.com



www.colliers.com

Owner Contact

John Strabel
Regional Director
8200 Park Meadows Drive, Unit 8226
Lone Tree, CO 80124
Direct: (248) 894-3974
jstrabel@firstindustrial.com



www.firstindustrial.com