



**FOR LEASE 5,360 SF**

## 8206 E. Park Meadows Drive Lone Tree, CO 80124

Parkway Point is a single story office, flex, R & D facility. The flexible building design allows for a wide variety of uses and industry types. Located across the street from Furniture Row with frontage and visibility on Park Meadows Drive.

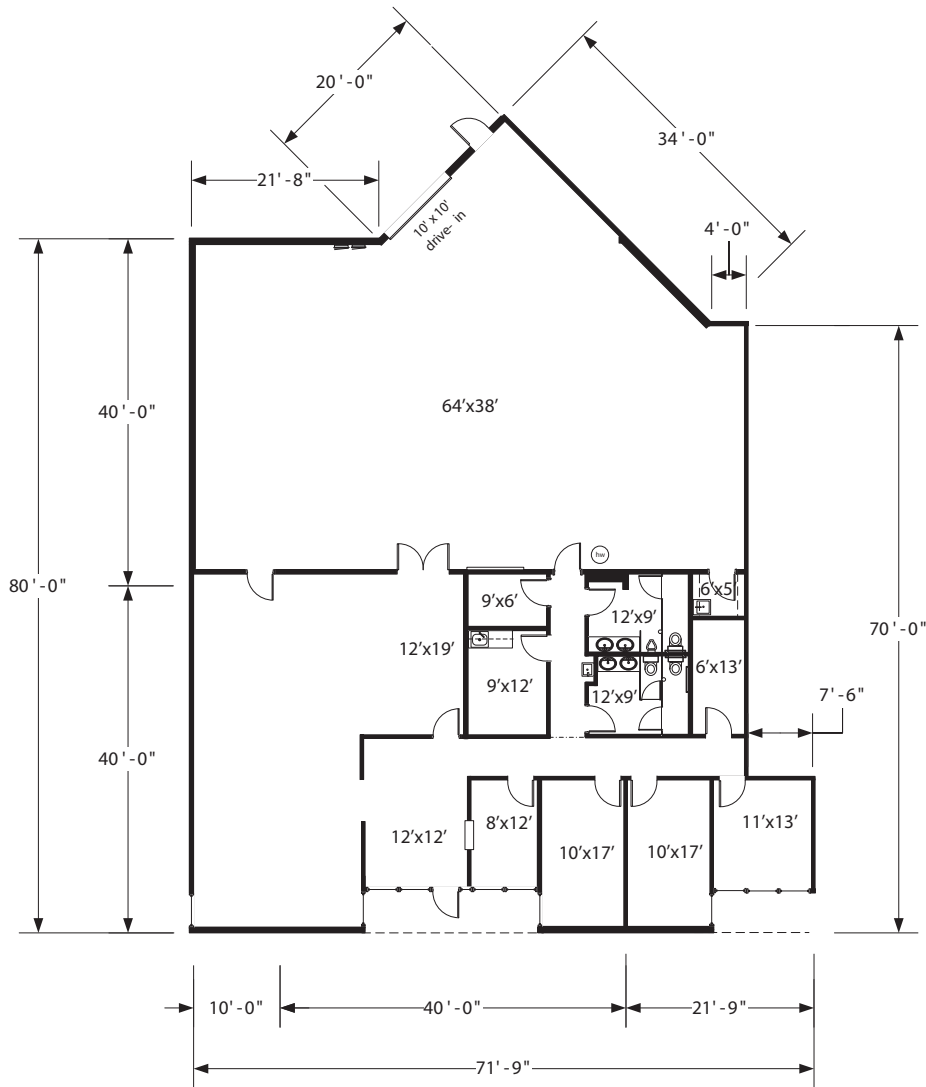
### Highlights

<b>Available:</b>	30–60 Days
<b>Available SF:</b>	5,360
<b>Office SF:</b>	2,800
<b>Warehouse SF:</b>	2,560
<b>Base Rent:</b>	\$11.00/SF NNN
<b>2018 CAM:</b>	\$3.99/SF
<b>Monthly Rent:</b>	\$6,695.53
<b>Number of Docks:</b>	None (0)
<b>Drive-In:</b>	One (1)
<b>Clear Height:</b>	13'
<b>Parking:</b>	Uncovered, Surface
<b>Power:</b>	300 Amps, 208/120 Volt 3-Phase



# 8206 E. Park Meadows Drive Lone Tree, CO 80124

## Space Plan



## Broker Contact



Cody Sheesley  
(303) 309-3520  
cody.sheesley@colliers.com  
[www.colliers.com](http://www.colliers.com)

## Owner Contact



**FIRST**  
INDUSTRIAL  
REALTY-TRUST

John Strabel  
Regional Director  
8200 Park Meadows Drive, Unit 8226  
Lone Tree, CO 80124  
Direct: (248) 894-3974  
jstrabel@firstindustrial.com  
[www.firstindustrial.com](http://www.firstindustrial.com)