



Several Small Suites Offered For Lease!

The Commons at Renaissance
2002 Renaissance Boulevard, King of Prussia, PA



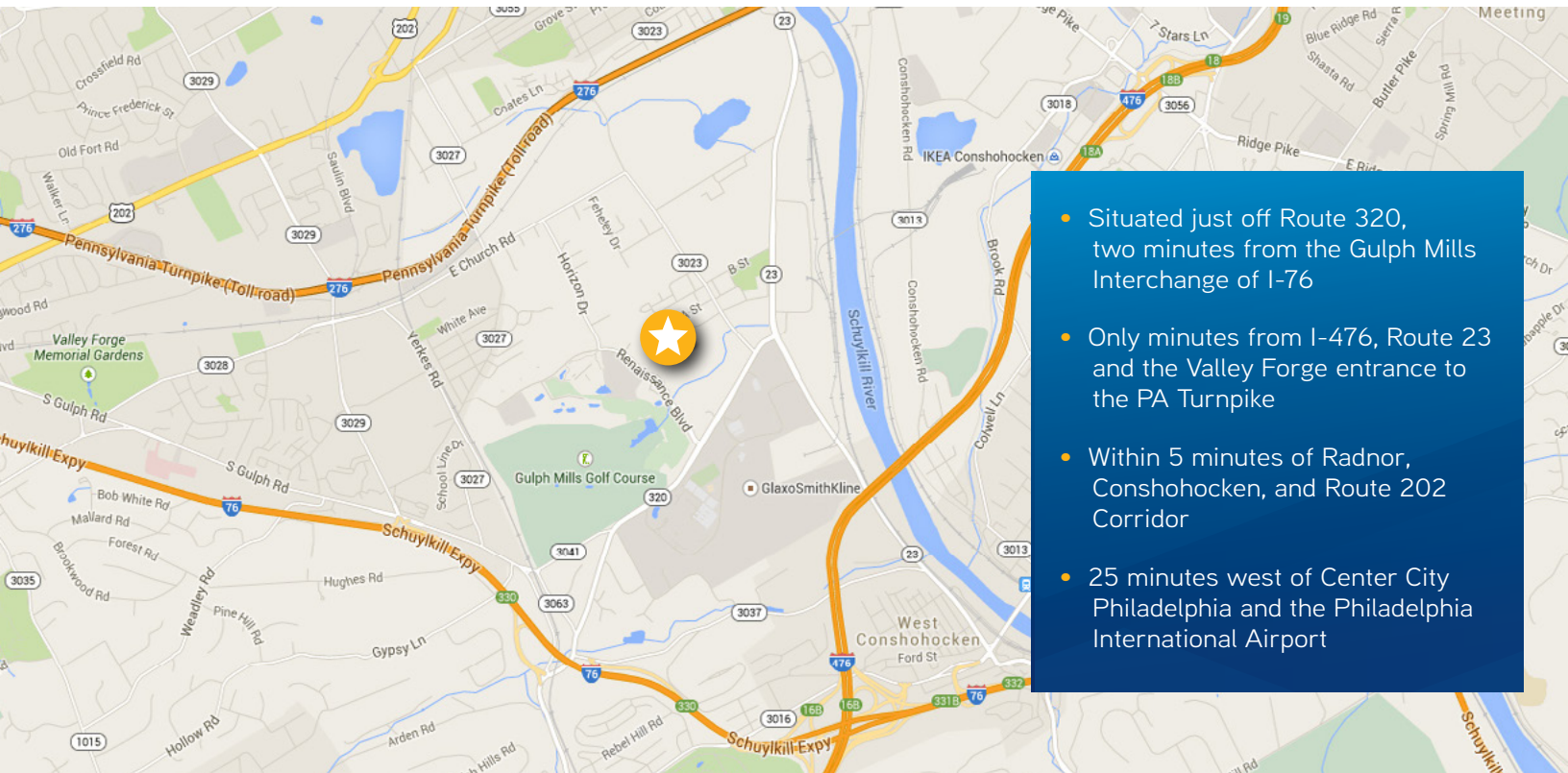
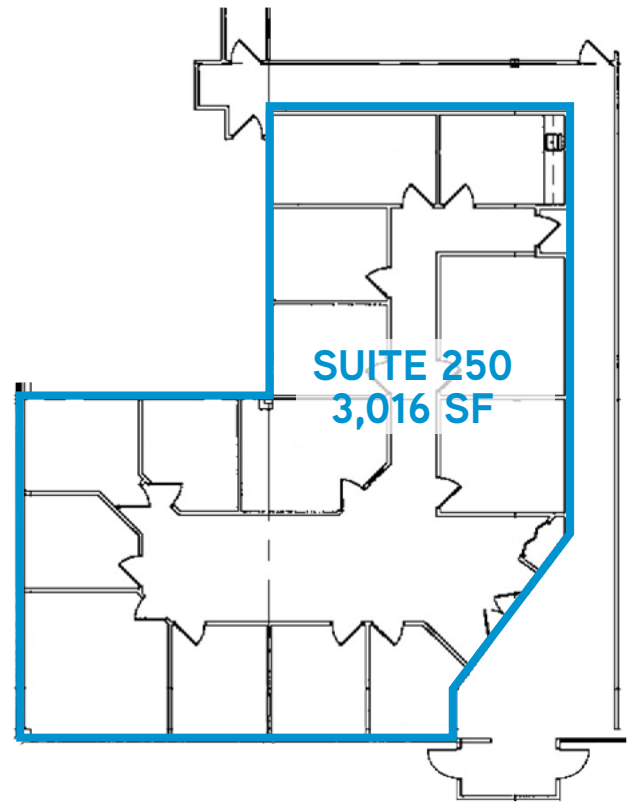
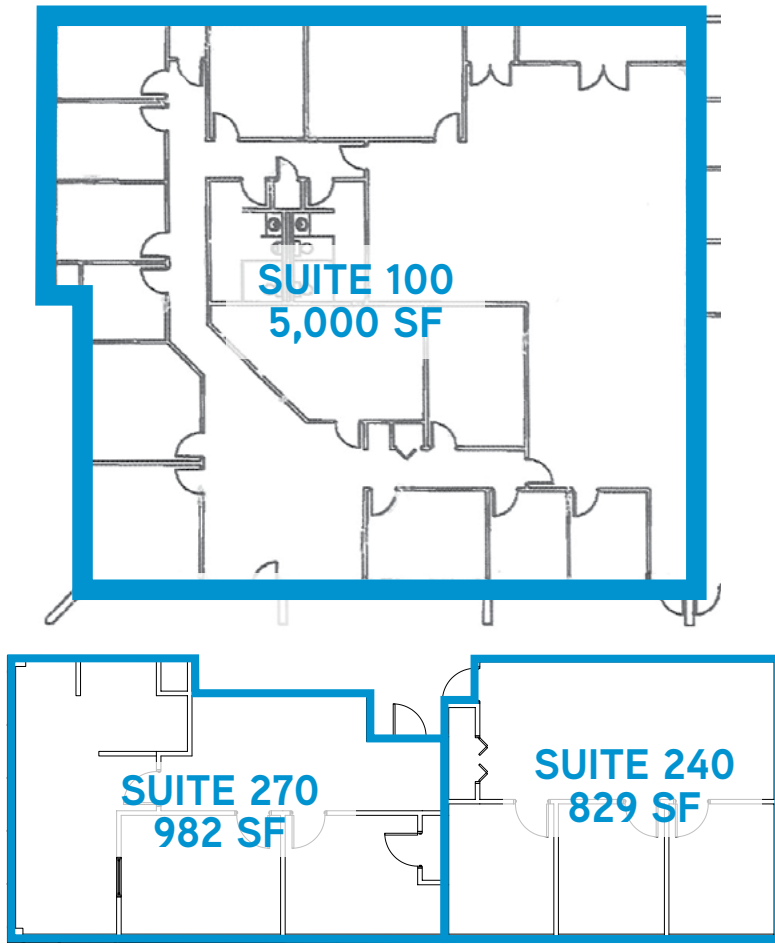
- 830 - 5,000 SF suites available, up to 10,000 SF contiguous on two floors
- Prominent entrances for first floor from front parking area and lower level via rear access
- Park setting with landscaped jogging trails, picnic areas and beautiful pond
- Best in/out access in entire business park, first right from the main entrance
- Amenities abound - childcare, hotels, retail, and restaurants with minutes of site
- Served by SEPTA Bus Route 95
- Strong ownership, professional on-site management

FOR MORE INFORMATION,
PLEASE CONTACT:

SANDY RICHARDSON
Senior Vice President
+1 215 928 7533
sandy.richardson@colliers.com



2002 Renaissance Boulevard, King of Prussia, PA



- Situated just off Route 320, two minutes from the Gulph Mills Interchange of I-76
- Only minutes from I-476, Route 23 and the Valley Forge entrance to the PA Turnpike
- Within 5 minutes of Radnor, Conshohocken, and Route 202 Corridor
- 25 minutes west of Center City Philadelphia and the Philadelphia International Airport