



Maplewood Professional Building

1655 Beam Avenue
Maplewood, MN 55109

BRIAN BRUGGEMAN CCIM
952 837 3079
brian.bruggeman@colliers.com

LOUIS SUAREZ CCIM
952 837 3061
louis.suarez@colliers.com



COLLIERS INTERNATIONAL
900 2nd Avenue S, Suite 1575
Minneapolis, MN 55402
www.colliers.com/msp

KEY FEATURES/HIGHLIGHTS

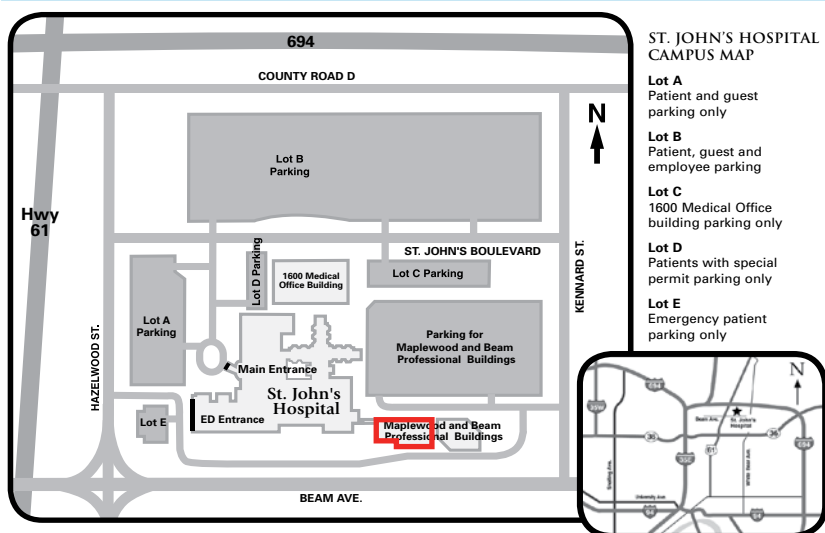
- › Located on HealthEast St. John's Hospital Campus
- › Connected to both the Hospital and Beam Professional Building
- › Convenient location on Beam Avenue, adjacent to plentiful retail and restaurants, including Maplewood Mall, Costco, and others
- › Easily accessible from I-694 and Highway 61
- › Ample parking on surface lot

FOR LEASE >

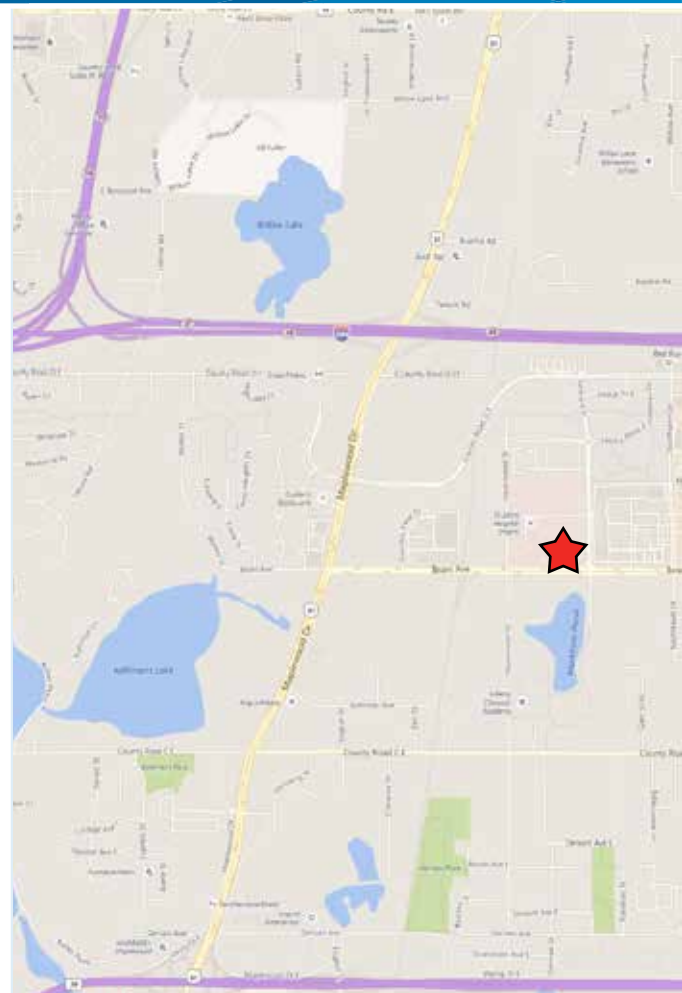
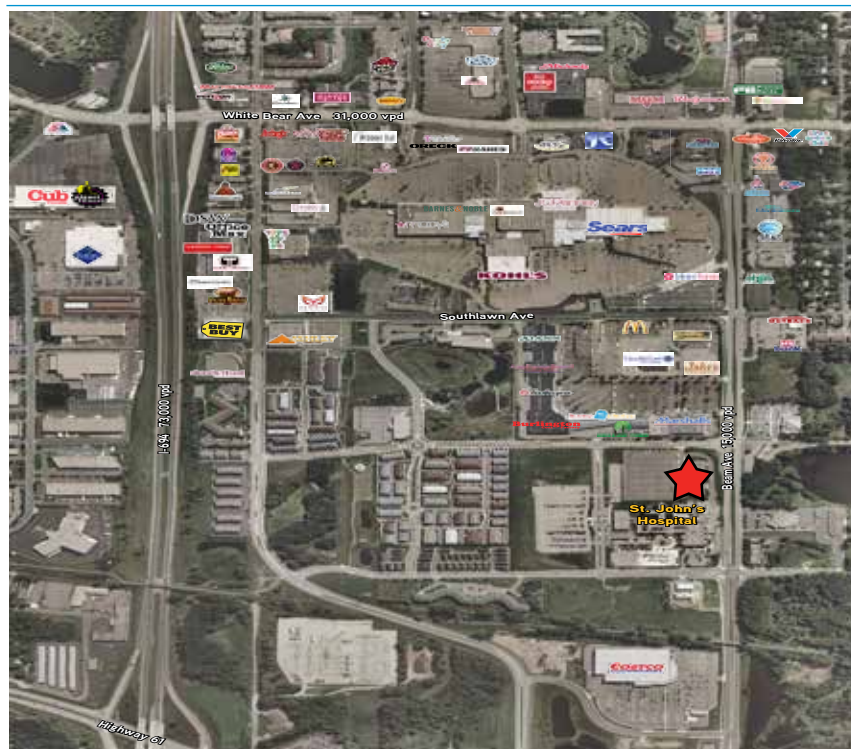
Maplewood Professional Building

Address:	1655 Beam Avenue, Maplewood, 55109
Building Size:	48,281 SF
Number of Floors:	4 (four)
Year Built:	1982
Parking:	Surface Lot
Availability:	11,599 SF
Net Rental Rates:	\$22.50
2018 CAM & Taxes:	\$18.58

HOSPITAL CAMPUS MAP



AERIAL VIEW



CONTACT US

BRIAN BRUGGEMAN CCIM, SIOR
952 837 3079
brian.bruggeman@colliers.com

LOUIS SUAREZ MBA, CCIM
952 837 3061
louis.suarez@colliers.com

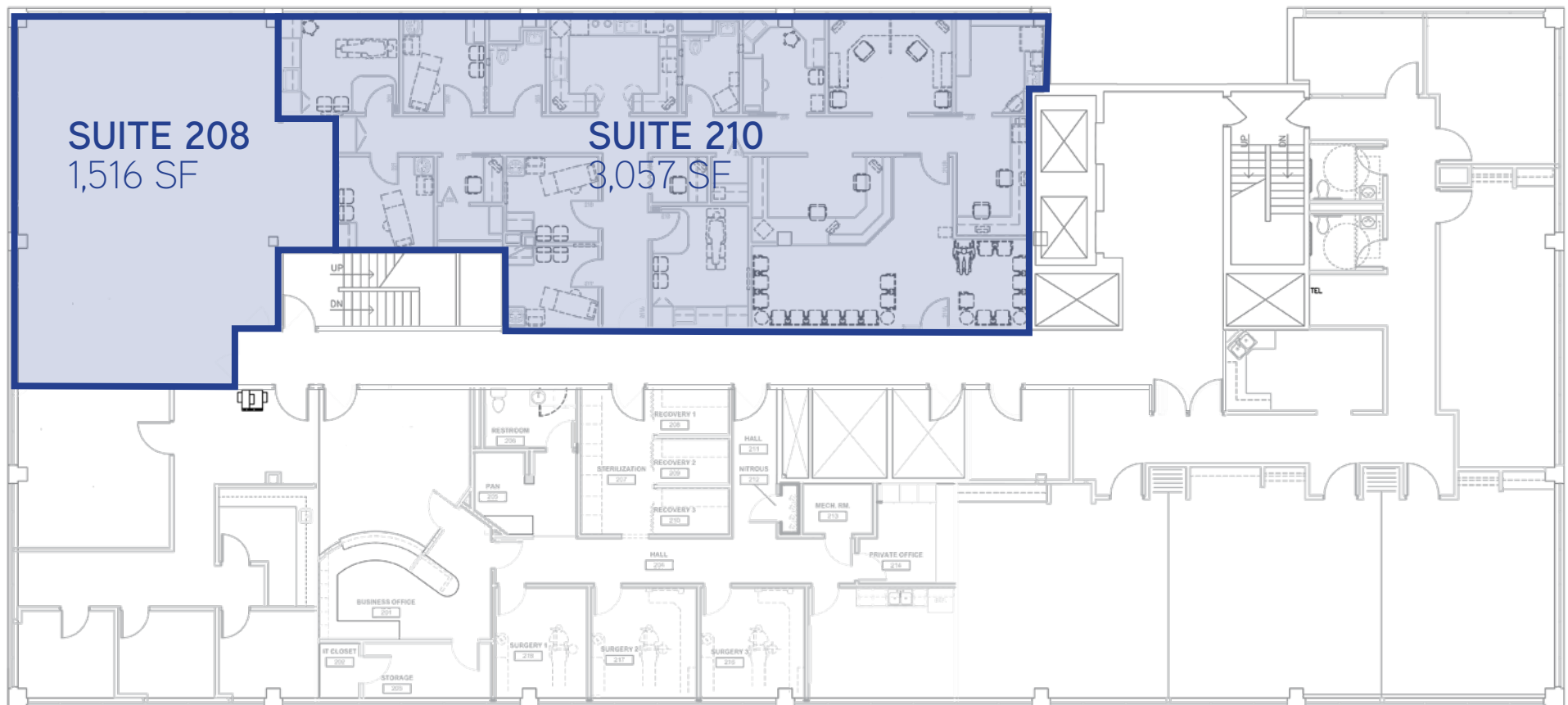
This document/email has been prepared by Colliers International for advertising and general information only. Colliers International makes no guarantees, representations or warranties of any kind, expressed or implied, regarding the information including, but not limited to, warranties of content, accuracy and reliability. Any interested party should undertake their own inquiries as to the accuracy of the information. Colliers International excludes unequivocally all inferred or implied terms, conditions and warranties arising out of this document and excludes all liability for loss and damages arising there from. This publication is the copyrighted property of Colliers International and/or its licensor(s). © 2016. All rights reserved. This communication is not intended to cause or induce breach of an existing listing agreement.



COLLIERS INTERNATIONAL
900 2nd Avenue S, Suite 1575
Minneapolis, MN 55402
952 897 7700
www.colliers.com/msp

Maplewood Professional Building

Second Floor - 4,573 contiguous SF



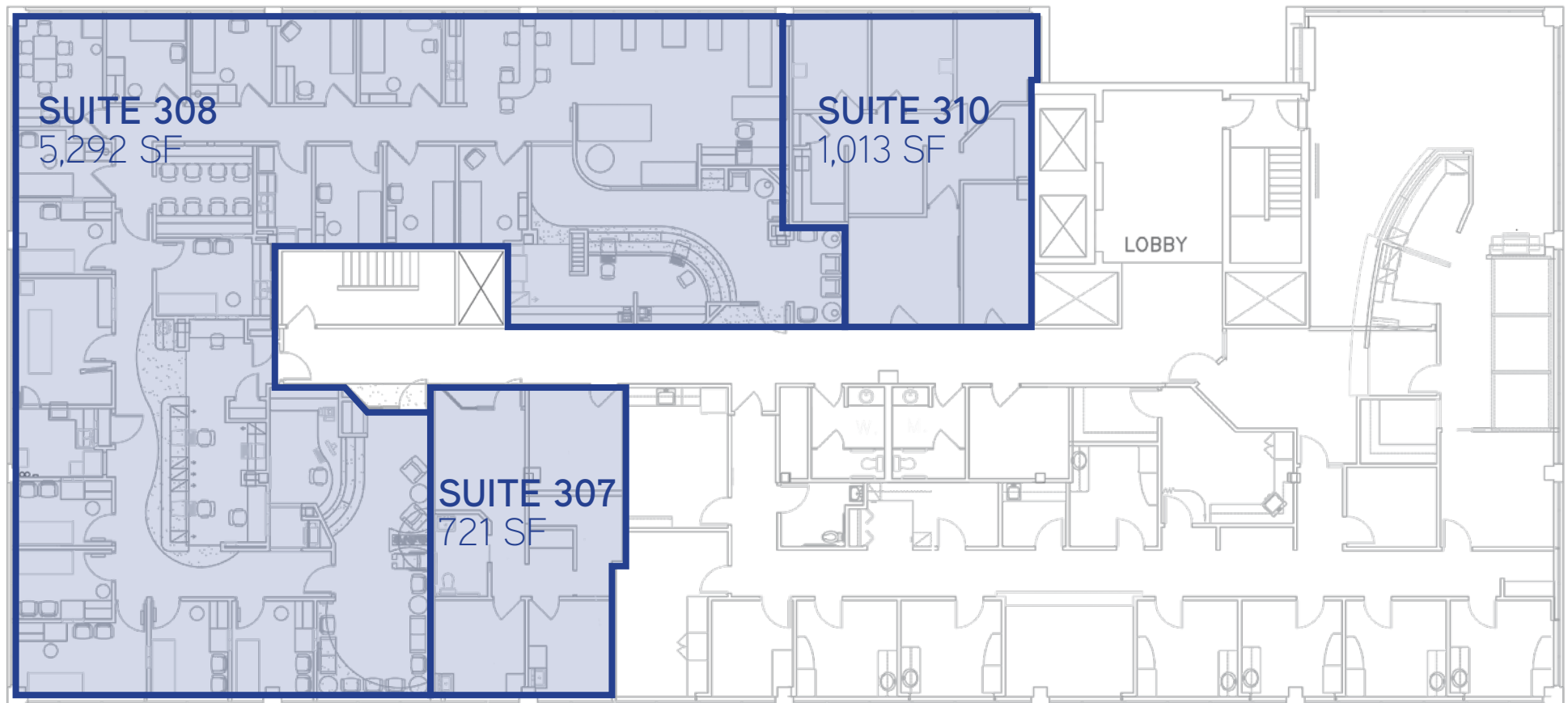
Contact Us

BRIAN BRUGGEMAN CCIM, SIOR
952 837 3079
brian.briggeman@colliers.com

LOUIS SUAREZ MBA, CCIM
952 837 3061
louis.suarez@colliers.com

Maplewood Professional Building

Third Floor - 7,026 contiguous SF



Contact Us

BRIAN BRUGGEMAN CCIM, SIOB
952 837 3079
brian.briggeman@colliers.com

LOUIS SUAREZ MBA, CCIM
952 837 3061
louis.suarez@colliers.com