

FOR SUBLEASE > OFFICE SPACE



1 PAPERMILL DRIVE

WHIPPANY, NJ



Available Space

1ST Floor – 3,109 RSF

Rent: Negotiable

Possession: Immediate

Term: Through August 19, 2025

Space Features

- > Building is located directly off Rt. 10 with great access to Route 287 & 80
- > Separate entrance available for own corporate identity
- > Reception area
- > 7 Offices - 3 single offices, 3 double offices, 1 office seats 3 people, 1 office seats 5 people
- > Conference Room – seats 10 people
- > Kitchenette area
- > New glass paneling finishes with hardwood throughout the space
- > Furniture can be made available

No representation is made to the accuracy of the information furnished herein and same is submitted subject to errors, omission, change of prices, rental, or other conditions, prior sale, lease, and/or withdrawal without notice. The furnishing of this information shall not be deemed a hiring. A commission in accordance with our principal's schedule of rates and conditions will be paid to the procuring Broker executing owner's brokerage agreement who fully consummates a lease upon terms and conditions acceptable to our principal.

Contact Us

JACK CALLAHAN
Associate Director
Salesperson
+1 973 299 3036
PARSIPPANY, NJ

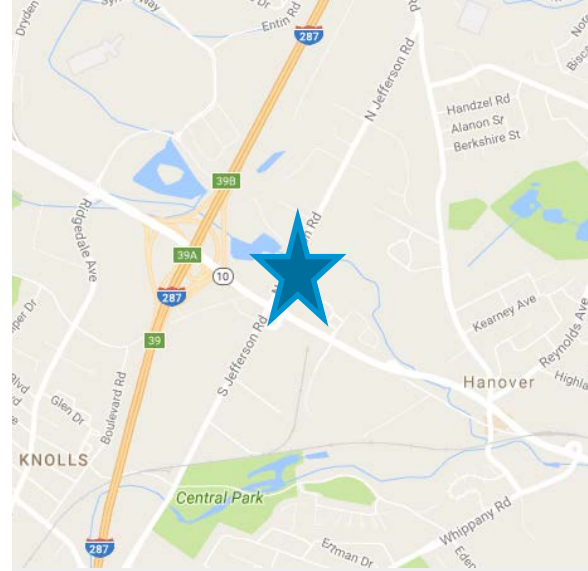
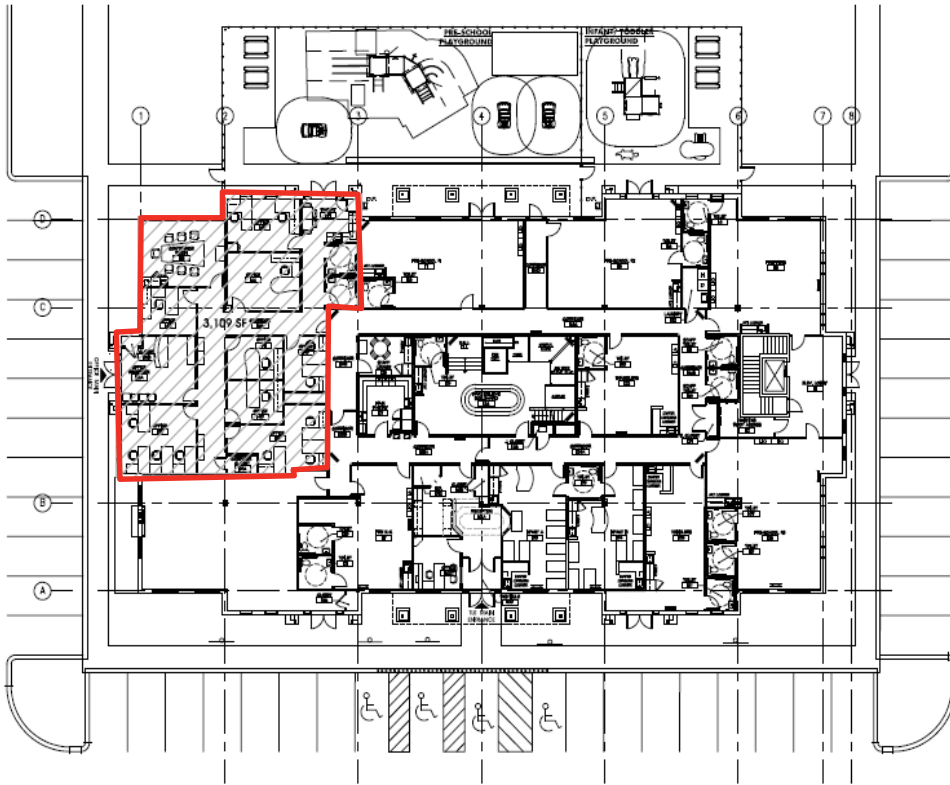
jack.callahan@colliers.com

RICHARD J. MADISON
Executive Managing Director
Salesperson
+1 973 299 3021
PARSIPPANY, NJ

richard.madison@colliers.com

COLLIERS INTERNATIONAL
Morris Corporate Center I
300 Interpace Parkway
Building C, 3rd Floor
Parsippany, NJ 07054
www.colliers.com

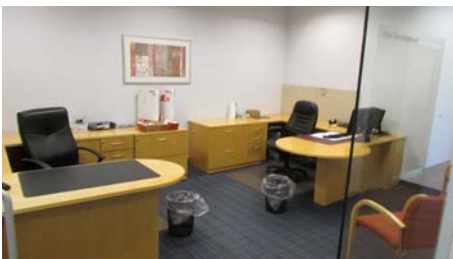
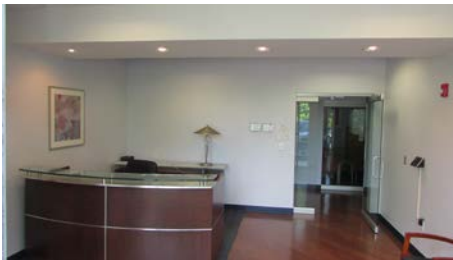
1st FLOOR – 3,109 RSF



Contact Us

JACK CALLAHAN
Associate Director
Salesperson
+1 973 299 3036
PARSIPPANY, NJ
jack.callahan@colliers.com

RICHARD J. MADISON
Executive Managing Director
Salesperson
+1 973 299 3021
PARSIPPANY, NJ
richard.madison@colliers.com



COLLIERS INTERNATIONAL

Morris Corporate Center I
300 Interpace Parkway
Building C, 3rd Floor
Parsippany, NJ 07054
www.colliers.com

No representation is made to the accuracy of the information furnished herein and same is submitted subject to errors, omission, change of prices, rental, or other conditions, prior sale, lease, and/or withdrawal without notice. The furnishing of this information shall not be deemed a hiring. A commission in accordance with our principal's schedule of rates and conditions will be paid to the procuring Broker executing owner's brokerage agreement who fully consummates a lease upon terms and conditions acceptable to our principal.

